

**Product number C13395_CLAMP-S2000**

Family	ANGELA	FWHM	N/A degrees
Type	Base part	Efficiency	-
LED	LUXEON S2000	cd/Im	-
Color	White	Gerber File	Available
Diameter	50 mm		
Height	10 mm		
Style	Round		
Optic Material	-		
Holder Material	PC		
Fastening	["screw"]		
Status	Production ready		

Product number FCN14467_ANGELA-RZ-S

Family	ANGELA	FWHM	9 degrees
Type	RefPack	Efficiency	87 %
LED	LUXEON S2000	cd/Im	16.000
Color	Metal	Gerber File	Available
Diameter	119.5 mm		
Height	80.2 mm		
Style	Round		
Optic Material	PC		
Holder Material	-		
Fastening	""		
Status	Production ready		

Product number FCN13568_ANGELA-M

Family	ANGELA	FWHM	15 degrees
Type	RefPack	Efficiency	85 %
LED	LUXEON S2000	cd/Im	4.700
Color	Metal	Gerber File	Available
Diameter	119.5 mm		
Height	80.2 mm		
Style	Round		
Optic Material	-		
Holder Material	-		
Fastening	["screw"]		
Status	Production ready		

For Philips Lumileds Luxeon S5000 LEDiL clamp C13395 included

Product number FCN13571_ANGELA-W

Family	ANGELA	FWHM	34 degrees
Type	RefPack	Efficiency	84 %
LED	LUXEON S2000	cd/Im	1.900
Color	Metal	Gerber File	Available
Diameter	119.5 mm		
Height	80.2 mm		
Style	Round		
Optic Material	-		
Holder Material	-		
Fastening	["screw"]		
Status	Production ready		

For Philips Lumileds Luxeon S2000 LEDiL clamp C13381 included



PRODUCT DATASHEET ANGELA series

last update 3/11/2016

NOTE: The typical divergence will be changed by different color, chip size and chip position tolerance. The typical total divergence is the full angle measured where the luminous intensity is half of the peak value.

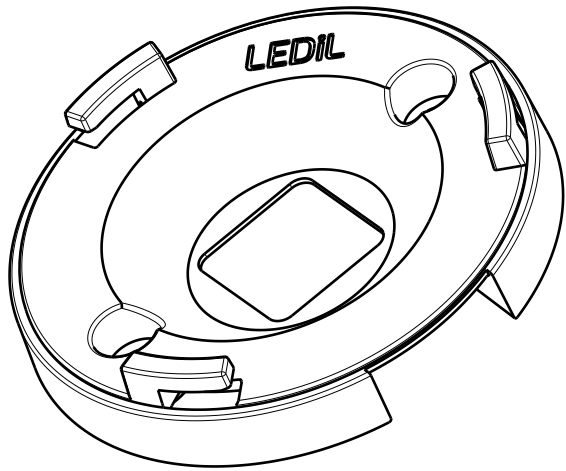


PRODUCT DATASHEET ANGELA series

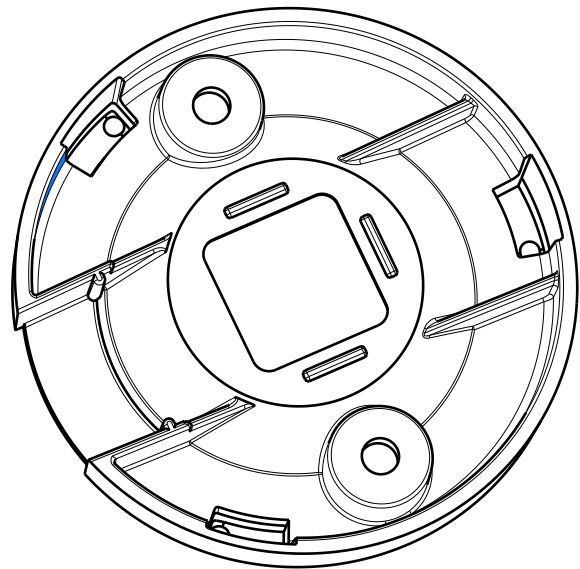
last update 3/11/2016

GENERAL INFORMATION

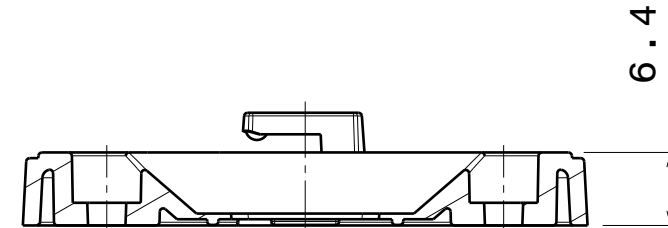
- Product series especially designed & optimized for LUXEON S2000 series of LEDs.
- Special care taken to make light distribution as uniform as possible.
- Reflector is made of aluminium coated PC (120 degrees of Celcius / 248 degrees of Fahrenheit) with protective lacquer (short term 100 degrees of Celcius / 212 degrees of Fahrenheit).
- Optic holder molded by high quality PC material (120 dergees of Celcius / 248 degrees of Fahrenheit).



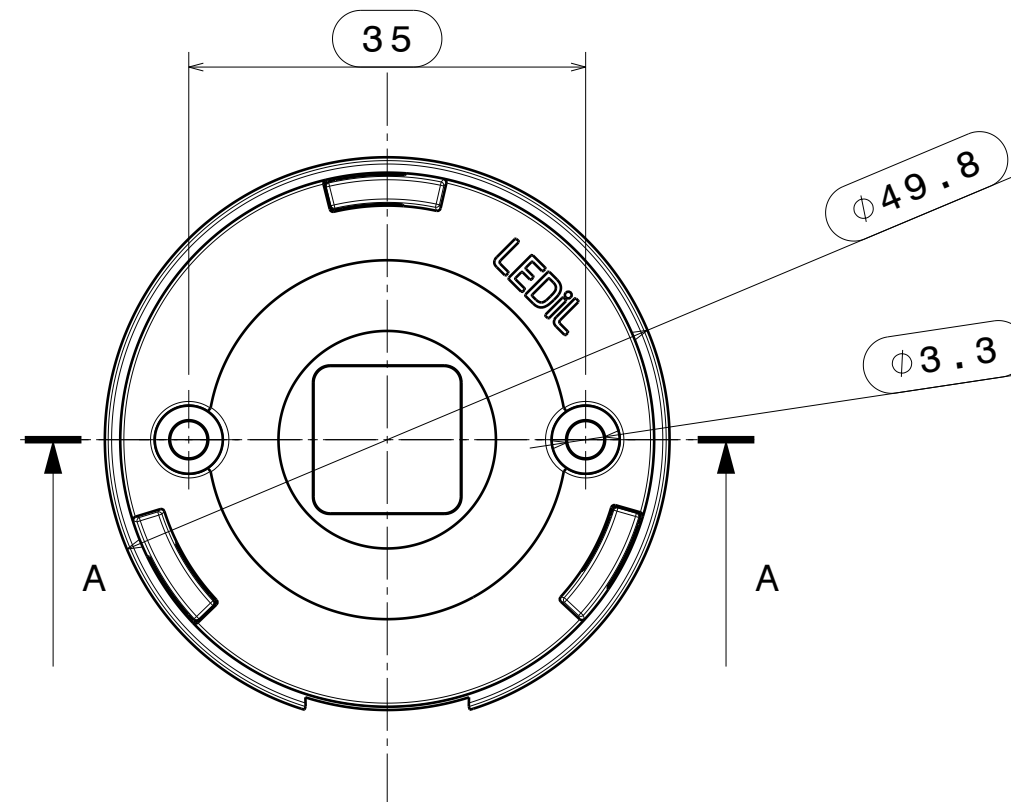
Isometric view
Scale: 3:2



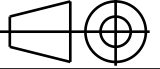
Front view
Scale: 3:2



Section view A-A
Scale: 3:2



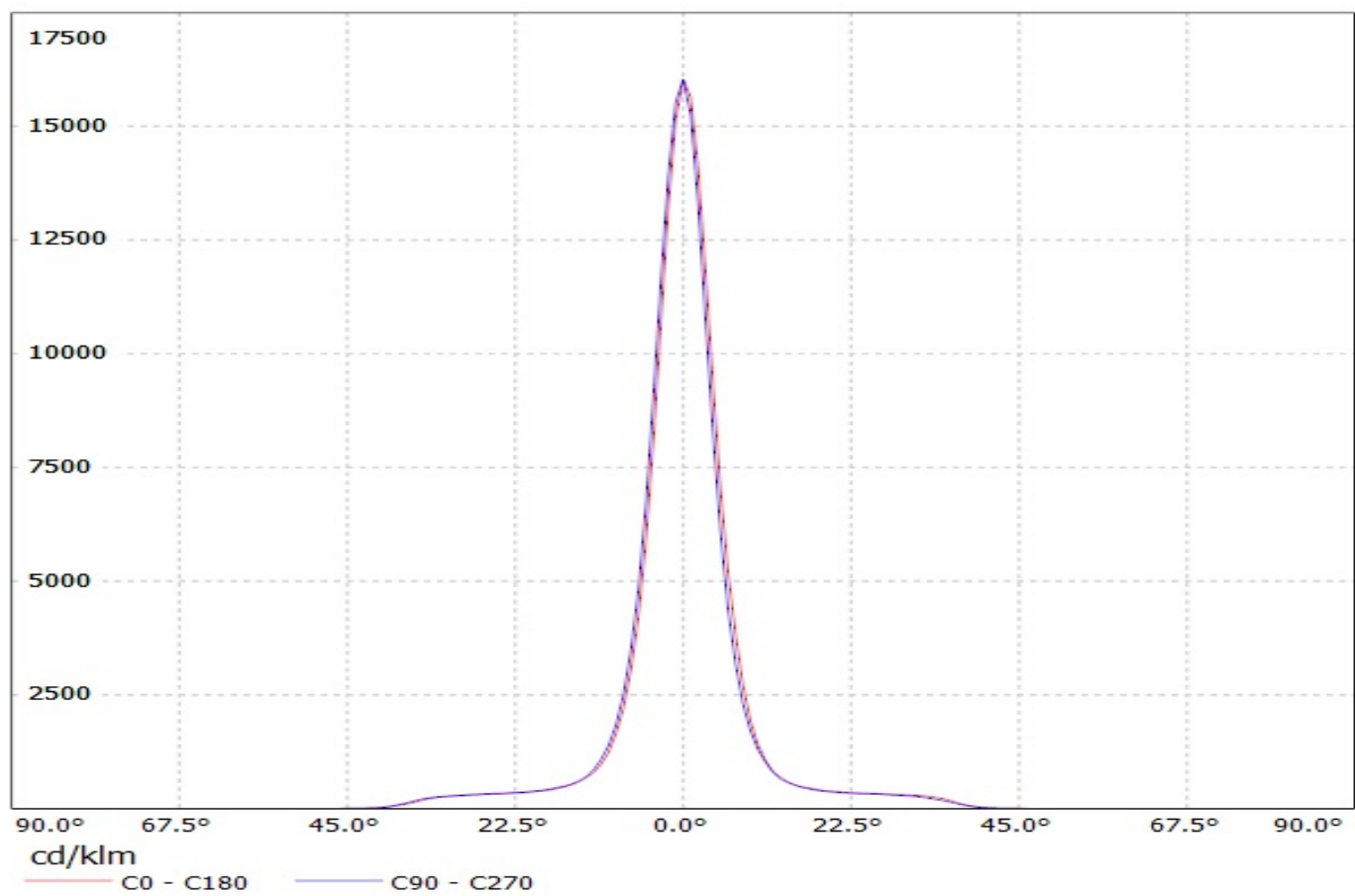
INDEX	PART NO	DESCRIPTION	MATERIAL	COLOUR
1	C13395	CLAMP-S2000	PC	white

<div>Tolerances if not otherwise shown According to DIN ISO 2768-1 Linear measures: Up to 30mm class M, otherwise class C. According to DIN ISO 2768-2 Form and position: class L Control for SPC marked dimensions.</div> <div>THIRD ANGLE PROJECTION: </div>		<div><div>LEDiL</div><div>Ledil Oy Salorankatu 10 FIN 24240 SALO Finland</div></div> <div>DRAWING TITLE DATASHEET_CLAMP-S2000</div>		
		SIZE	PART NUMBER	REV
DRAWN BY		DATE	A3	
CHECKED BY		DATE	C13395	
DESIGNED BY		DATE	001	
SCALE		3:2	WEIGHT	SHEET 1/1

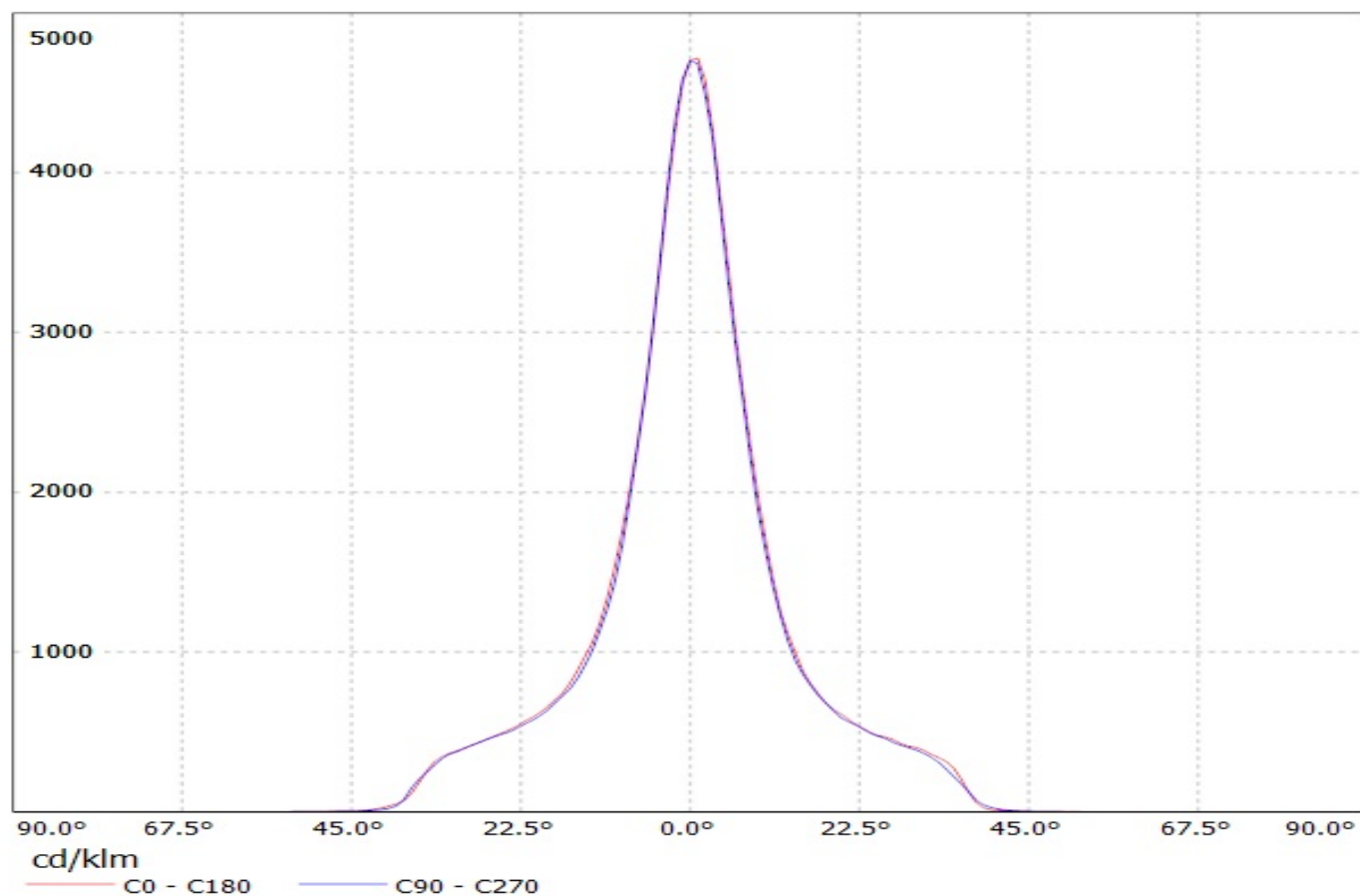
LEDiL PROPRIETARY

This drawing is the property of LEDiL Oy. It may not be reproduced, copied or communicated without a written agreement with LEDiL Oy.

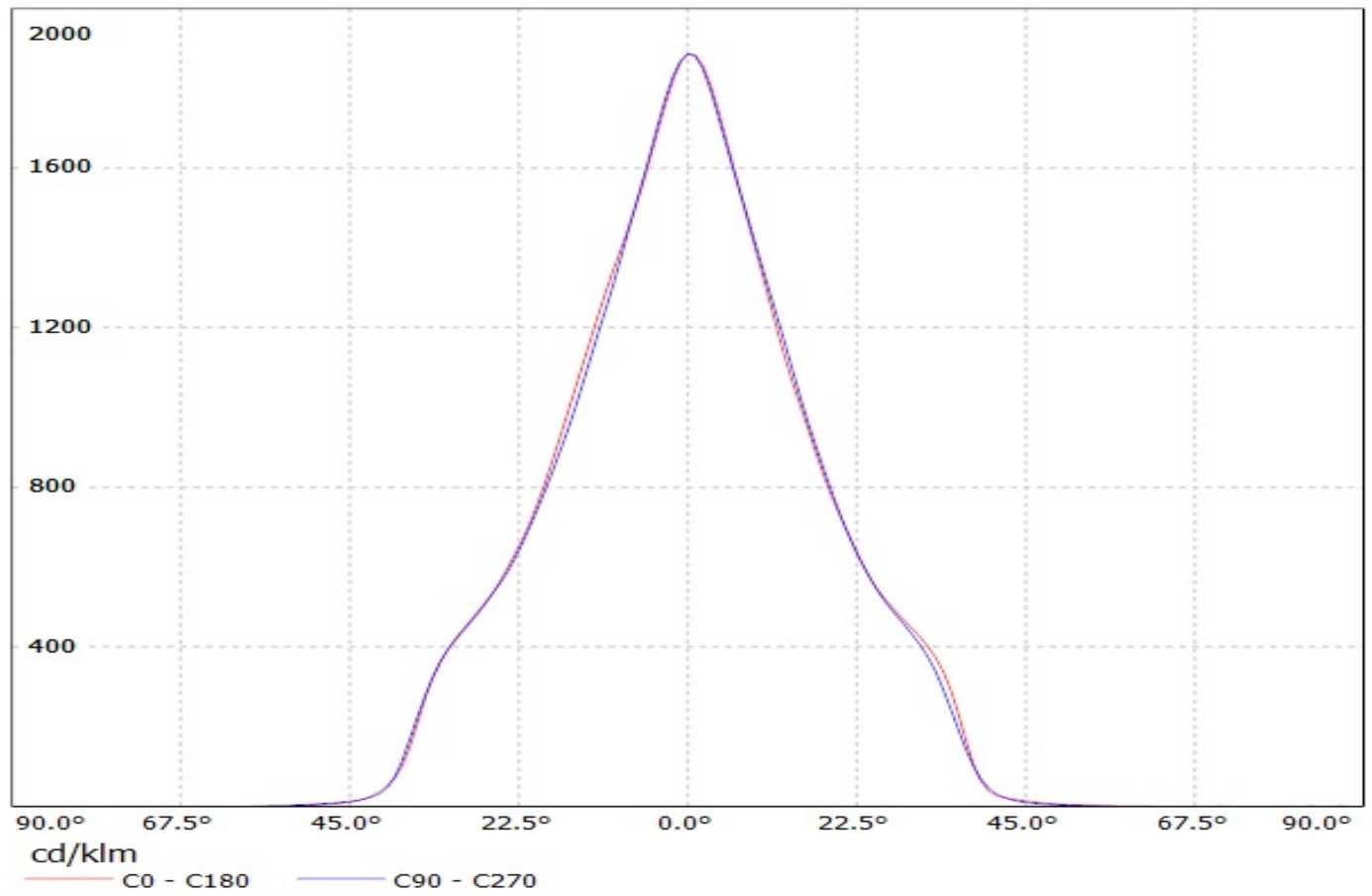
Luminaire: LEDil Oy FN14467_ANGELA-S_(Luxeon_S2000) Efficiency=87%
Lamps: 1 x Philips Lumileds Luxeon S2000 (LXS8-PW30-0017) 447lm @ 100mA P=4.6W I=100mA



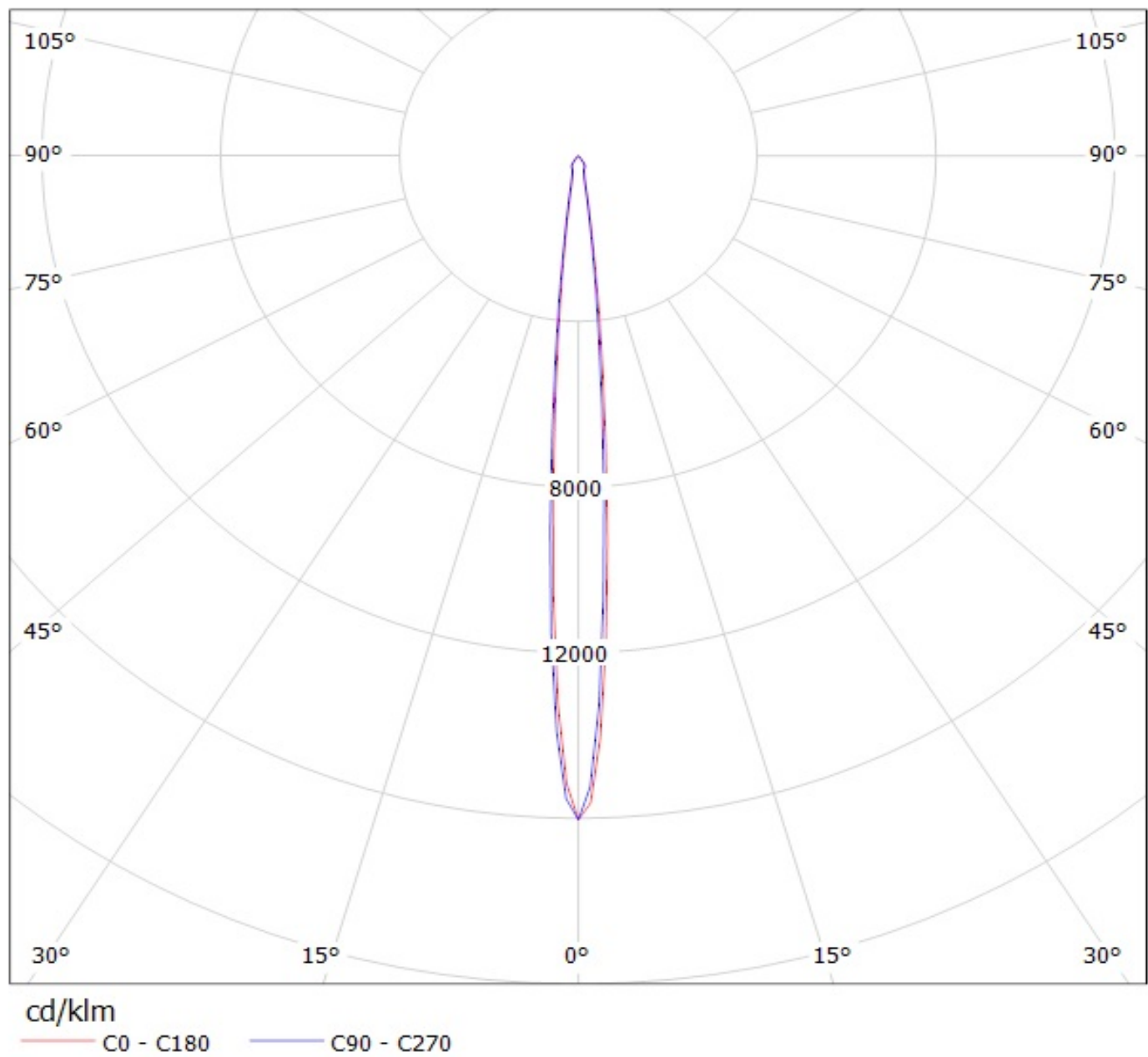
Luminaire: LEDil Oy FCN13568_ANGELA-M_(Luxeon_S2000) Efficiency=85%
Lamps: 1 x Philips Lumileds Luxeon S2000 (LXS8-PW30-0017) 442lm @ 100mA P=4.6W I=100mA



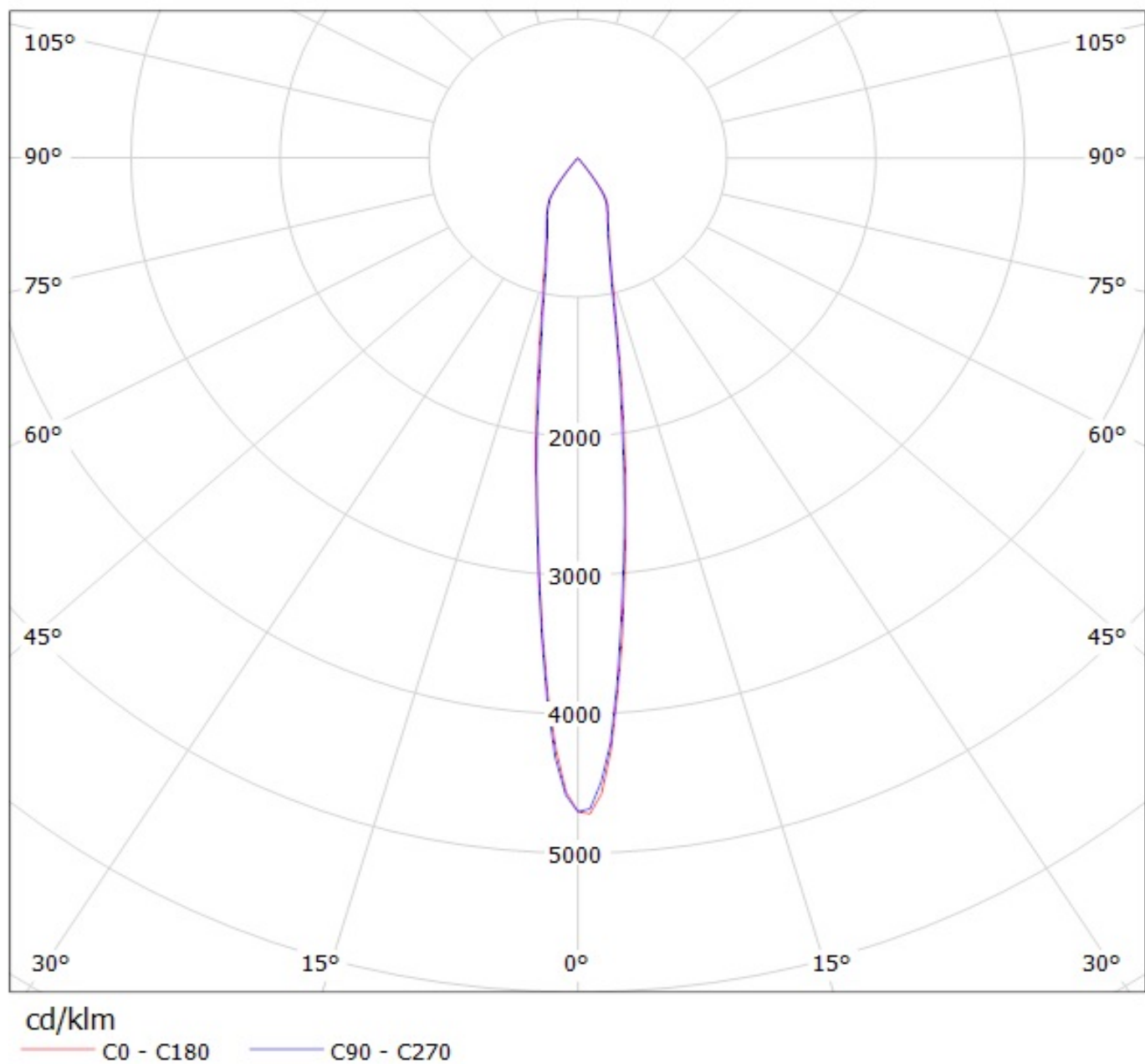
Luminaire: LEDil Oy FCN13571_ANGELA-W (Luxeon_S2000) Efficiency=84%
Lamps: 1 x Philips Lumileds Luxeon S2000 (LXS8-PW30-0017) 442lm @ 100mA P=4.6W I=100mA



Luminaire: LEDil Oy FN14467_ANGELA-S_(Luxeon_S2000) Efficiency=87%
Lamps: 1 x Philips Lumileds Luxeon S2000 (LXS8-PW30-0017) 447lm @ 100mA P=4.6W I=100mA



Luminaire: LEDil Oy FCN13568_ANGELA-M_(Luxeon_S2000) Efficiency=85%
Lamps: 1 x Philips Lumileds Luxeon S2000 (LXS8-PW30-0017) 442lm @ 100mA P=4.6W I=100mA



Luminaire: LEDil Oy FCN13571_ANGELA-W_(Luxeon_S2000) Efficiency=84%

Lamps: 1 x Philips Lumileds Luxeon S2000 (LXS8-PW30-0017) 442lm @ 100mA P=4.6W I=100mA

