

FS 1 - S 0 1 - 1 X X X

MOUNTING SCREW OPTION

1 = 8 mm MOUNTING SCREW SHIPPED BULK IN SAME TRAYS WITH CAGE ASSEMBLIES

2 = NO MOUNTING SCREW SUPPLIED

3 = 10 mm MOUNTING SCREW WITH LOCK WASHER SHIPPED BULK IN SAME TRAYS WITH CAGE ASSEMBLIES

- GASKET OPTION

E = STAINLESS STEEL EMI GASKET

F = FOAM, CHOMERICS SOFT SHIELD 4800, EMI GASKET

C = CONDUCTIVE ELASTOMER, CHOMERICS S6305

KEYING OPTION (SEE BELOW TABLE FOR FURTHER CLARIFICATION)

0 = NO KEY

0 = NO KEY
1 = KEY #1

1 = KEY #1
2 = KEY #2

2 = KEY #2
4 = KEY #4

4 = KEY #4
5 = KEY #5

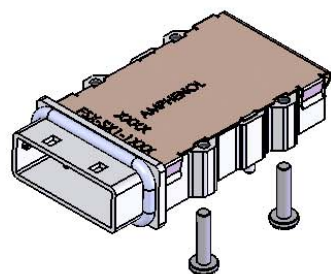
5 = KEY #5
6 = KEY #6

6 = KEY #6
7 = KEY #7

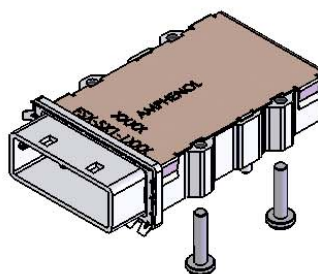
7 = KEY #7
24 = KEY #2 AND #4

24 = KEY #2 AND #4
46 = KEY #4 AND #6

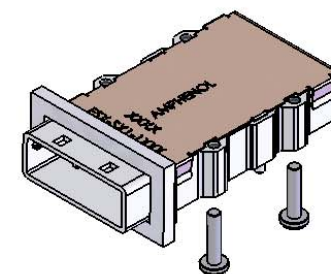
0	FS1-S01-10XX	No Key
1	FS1-S01-11XX	SATA 'X' Cable
2	FS1-S01-12XX	
4	FS1-S01-14XX	SAS Universal Port
5	FS1-S01-15XX	
6	FS1-S01-16XX	
7	FS1-S01-17XX	SATA 'M' Cable
2, 4	FS1-S01-124X	SAS Out Port
4, 6	FS1-S01-146XX	SAS In Port



PART NUMBER: **FS1-S01-14C1** SHOWN
(CAGE ASSEMBLY WITH ELASTOMERIC GASKET
AND 8mm MOUNTING SCREWS SHIPPED BULK)



PART NUMBER: **FS1-S01-14E1** SHOWN
(CAGE ASSEMBLY WITH STAINLESS STEEL GASKET
AND 8mm MOUNTING SCREWS SHIPPED BULK)



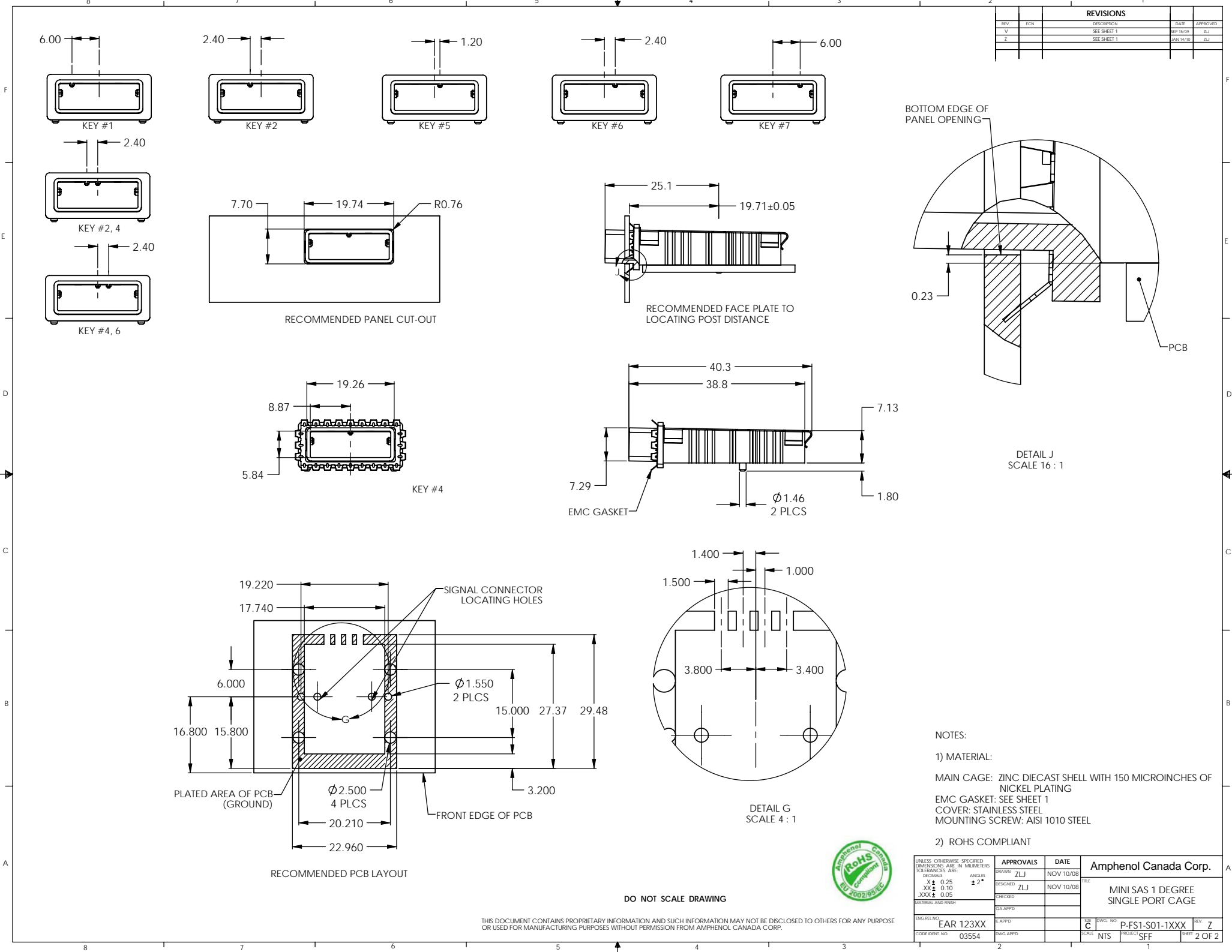
PART NUMBER: **FS1-S01-14F1** SHOWN
(CAGE ASSEMBLY WITH FOAM GASKET
AND 8mm MOUNTING SCREWS SHIPPED BULK)



DO NOT SCALE DRAWING

THIS DOCUMENT CONTAINS PROPRIETARY INFORMATION AND SUCH INFORMATION MAY NOT BE DISCLOSED TO OTHERS FOR ANY PURPOSE OR USED FOR MANUFACTURING PURPOSES WITHOUT PERMISSION FROM AMPHENOL CANADA CORP.

UNLESS OTHERWISE SPECIFIED DIMENSIONS ARE IN MILLIMETERS		APPROVALS		DATE		Amphenol Canada Corp. MINI SAS 1 DEGREE SINGLE PORT CAGE	
DECIMALS ARE IN HUNDRETHS		DESIGN	ZLJ	NOV 10/08	FILE		
TOLERANCES UNLESS OTHERWISE SPECIFIED		DESIGNED BY	ZLJ	NOV 10/08			
FRACTIONS ARE IN SIXTEENTHS		CHECKED					
ANGLES ± 0.25 ± 0.10 ± 0.05 ± 0.05		MATERIAL AND FINISH		C/A APP'D			
EING REL NO		EAR 123XX		S/APP'D			
CODE IDENT NO		03554		S/APP'D			
				SCALE		C NTS SFF SHEET 1 OF	



REVISIONS				
REV	ECN	DESCRIPTION	DATE	APPROVED
V		SEE SHEET 1	SEP 15/09	ZLJ
Z		SEE SHEET 1	JAN 14/10	ZLJ

NOTES:

1) MATERIAL:

MAIN CAGE: ZINC DIECAST SHELL WITH 150 MICROINCHES OF NICKEL PLATING

EMC GASKET: SEE SHEET 1

COVER: STAINLESS STEEL

MOUNTING SCREW: AISI 1010 STEEL

2) ROHS COMPLIANT

APPROVALS		DATE	Amphenol Canada Corp.	
DRAWN	ZLJ	NOV 10/08	MINI SAS 1 DEGREE SINGLE PORT CAGE	
DESIGNED	ZLJ	NOV 10/08		
CHECKED				
CAL APP'D				
ENGR REL NO	EAR 123XX	SCALE	NTS	PROJECT SFF
CODE IDENT NO	03554	DWG APP'D		SHEET 2 OF 2



THIS DOCUMENT CONTAINS PROPRIETARY INFORMATION AND SUCH INFORMATION MAY NOT BE DISCLOSED TO OTHERS FOR ANY PURPOSE OR USED FOR MANUFACTURING PURPOSES WITHOUT PERMISSION FROM AMPHENOL CANADA CORP.

DO NOT SCALE DRAWING

Mouser Electronics

Authorized Distributor

Click to View Pricing, Inventory, Delivery & Lifecycle Information:

[Amphenol:](#)

[FS1-S01-14E1](#)