

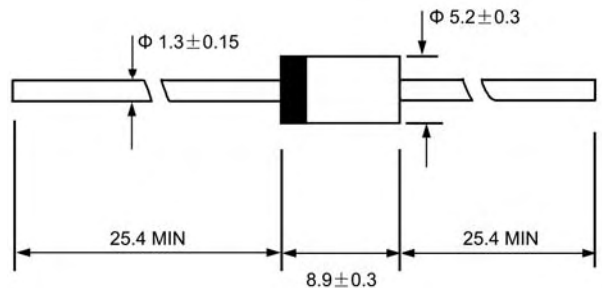
HER601-HER608

High Efficiency Rectifiers

VOLTAGE RANGE: 50 --- 1000 V

CURRENT: 6.0 A

DO-27



Dimensions in millimeters

Features

- ◇ Low cost
- ◇ Low leakage
- ◇ Low forward voltage drop
- ◇ High current capability
- ◇ Easily cleaned with alcohol, Isopropanol and similar solvents
- ◇ The plastic material carries U/L recognition 94V-0

Mechanical Data

- ◇ Case: JEDEC DO-27, molded plastic
- ◇ Polarity: Color band denotes cathode
- ◇ Weight: 0.041 ounces, 1.15 grams
- ◇ Mounting position: Any

MAXIMUM RATINGS AND ELECTRICAL CHARACTERISTICS

Ratings at 25°C ambient temperature unless otherwise specified.

Single phase, half wave, 60 Hz, resistive or inductive load. For capacitive load, derate by 20%.

		HER 601	HER 602	HER 603	HER 604	HER 605	HER 606	HER 607	HER 608	UNITS
Maximum recurrent peak reverse voltage	V_{RRM}	50	100	200	300	400	600	800	1000	V
Maximum RMS voltage	V_{RMS}	35	70	140	210	280	420	560	700	V
Maximum DC blocking voltage	V_{DC}	50	100	200	300	400	600	800	1000	V
Maximum average forward rectified current 9.5mm lead length, @ $T_A=75^\circ\text{C}$	$I_{F(AV)}$	6.0								A
Peak forward surge current 8.3ms single half-sine-wave superimposed on rated load @ $T_J=125^\circ\text{C}$	I_{FSM}	200.0								A
Maximum instantaneous forward voltage @ 6.0A	V_F	1.0		1.3		1.7			V	
Maximum reverse current @ $T_A=25^\circ\text{C}$ at rated DC blocking voltage @ $T_A=100^\circ\text{C}$	I_R	10.0 200.0								μA
Maximum reverse recovery time (Note1)	t_{rr}	60				75				ns
Typical junction capacitance (Note2)	C_J	100				65				pF
Typical thermal resistance (Note3)	$R_{\theta JA}$	12								$^\circ\text{C/W}$
Operating junction temperature range	T_J	- 55 ---- + 150								$^\circ\text{C}$
Storage temperature range	T_{STG}	- 55 ---- + 150								$^\circ\text{C}$

NOTE: 1. Measured with $I_F=0.5\text{A}$, $I_R=1\text{A}$, $I_{rr}=0.25\text{A}$.

2. Measured at 1.0MHz and applied reverse voltage of 4.0V DC.

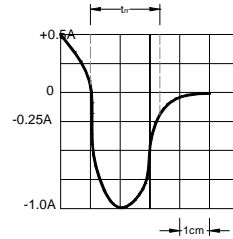
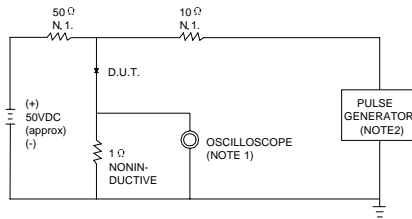
3. Thermal resistance junction to ambient.

HER601-HER608

High Efficiency Rectifiers

Ratings AND Characteristic Curves

FIG.1 -- TEST CIRCUIT DIAGRAM AND REVERSE RECOVERY TIME CHARACTERISTIC

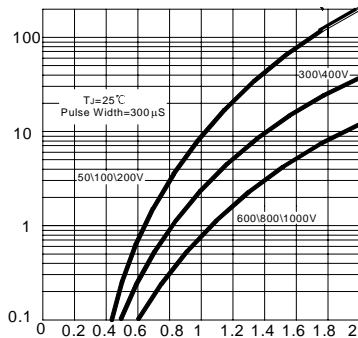


NOTES:1.RISE TIME = 7ns MAX.INPUT IMPEDANCE = 1MΩ.22pF.
2.RISE TIME =10ns MAX.SOURCE IMPEDANCE=50 Ω.

SET TIME BASE FOR 10/20 ns/cm

FIG.2 -- TYPICAL FORWARD CHARACTERISTIC

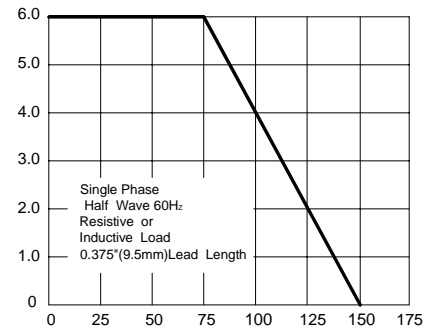
INSTANTANEOUS FORWARD CURRENT AMPERES



INSTANTANEOUS FORWARD VOLTAGE, VOLTS

FIG.3 -- FORWARD DERATING CURVE

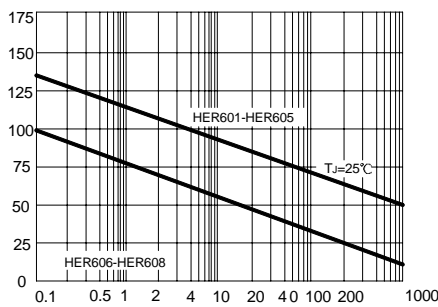
AVERAGE FORWARD CURRENT AMPERES



AMBIENT TEMPERATURE, °C

FIG.4 -- TYPICAL JUNCTION CAPACITANCE

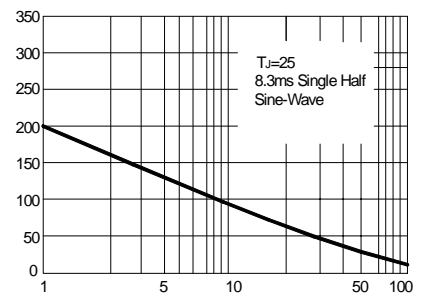
JUNCTION CAPACITANCE,pF



REVERSE VOLTAGE, VOLTS

FIG.5 -- PEAK FORWARD SURGE CURRENT

PEAK FORWARD SURGE CURRENT AMPERES



NUMBER OF CYCLES AT 60Hz