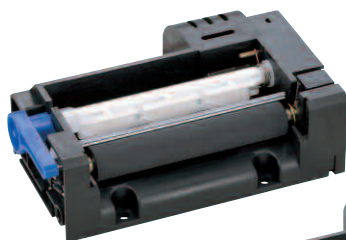


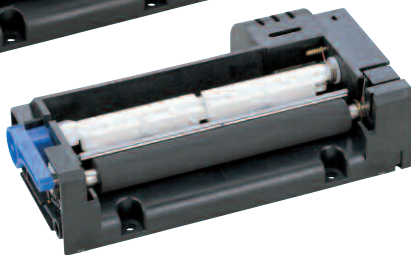
## LTP2000 series 24V **Print** Mechanisms

### LTP2000 Series

The versatile LTP2000 direct thermal print mechanism series delivers exceptional value with proven 2", 3" and 4" models. The ability to print both receipts and labels, coupled with straight and curved paper path alternatives, and an auto-cutter rated for up to 300,000 cuts, enables these units to tackle the broadest array of applications, including medical devices, kiosks, point of sale systems, and more.



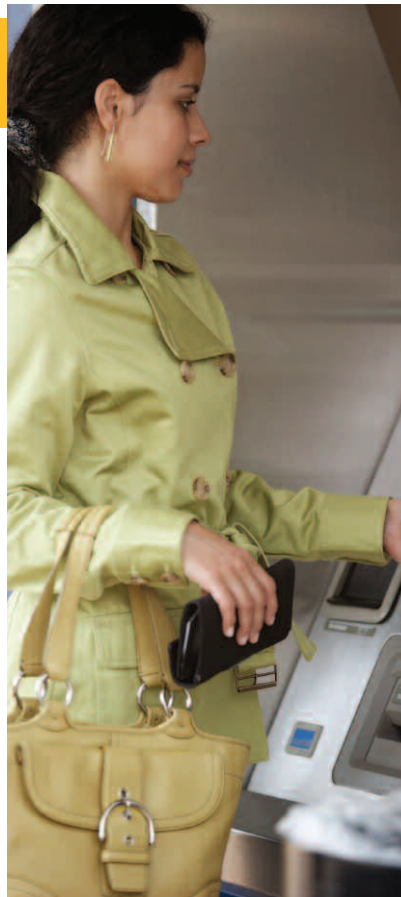
LTP2242



LTP2342

(Not shown: LTP2442)

- **90 mm/sec print speed**
- **Choice of interface board or processor, adding design flexibility**
- **Label and receipt printing support**



### Product Specifications

| Model                      |                           | LTP2242                   | LTP2342          | LTP2442          |
|----------------------------|---------------------------|---------------------------|------------------|------------------|
| Printing                   | Method                    | Thermal line dot printing |                  |                  |
|                            | No. dots/line             | 432                       | 576              | 832              |
|                            | Resolution (dots/mm)      | 8                         | 8                | 8                |
|                            | Paper width (mm)          | 60                        | 80               | 112              |
|                            | Printing width (mm)       | 54                        | 72               | 104              |
|                            | Speed (max mm/sec)        | 90                        | 75               | 75               |
| Paper path                 |                           | Straight/Curved           |                  |                  |
| Sensors                    | Head-up detection         | By thermistor             |                  |                  |
|                            | Platen position detection | By mechanical switch      |                  |                  |
|                            | Out of paper detection    | By photo interrupter      |                  |                  |
| Power supply (V)           | Operating voltage (Vp)    | 21.6 to 26.4              |                  |                  |
|                            | Operating voltage (Vdd)   | 4.75 to 5.25              |                  |                  |
| Peak current (A)           | Head                      | 4.3(26.4V/288 dots)       |                  |                  |
|                            | Motor                     | 0.5                       |                  |                  |
| Service life               | Pulse activation          | 100 million               |                  |                  |
|                            | Abrasion resistance (km)  | 50                        |                  |                  |
| Operating temperature (°C) |                           | 0 to 50                   |                  |                  |
| Dimensions (WxDxH mm)      |                           | 85.2x61.4x27.0"           | 106.4x61.4x27.0" | 138.2x61.4x27.0" |
| Mass                       |                           | Approx. 115               | Approx. 135      | Approx. 160      |

LTP2000 series  
24V **Print** Mechanisms

Interface Board

| Model                       |                                 | IF2301-01B  | IF2301-01BK |
|-----------------------------|---------------------------------|---|-------------|
| CPU                         |                                 | PT230P01  |             |
| Operating voltage (V)       |                                 | Vp:21.6 to 26.4, Vcc:4.5 to 5.5                                   |             |
| Character matrix (HxW dots) |                                 | 16 dot characters: 16x8, 16x16<br>24 dot characters: 24x12, 24x24 |             |
| Character type              | Optional font                   | Yes   | Yes         |
|                             | Downloaded character            | Yes   | Yes         |
|                             | User-defined character          | Yes   | Yes         |
|                             | Extended graphics character set | Yes   | Yes         |
|                             | Katakana character set          | No  | Yes         |
|                             | JIS 1&2 level Kanji             | No  | Yes         |
| Interface                   |                                 | Parallel, Serial (C-MOS)  |             |
| Dimensions (WxDxH mm)       |                                 | 90.0x100.0x22.0   |             |

CPU

| Model                       | PT230P01  |
|-----------------------------|---|
| Package form                | 128 pin QFP   |
| Operating voltage (V)       | Vp:21.6 to 26.4, Vcc:4.5 to 5.5   |
| Operating frequency (MHz)   | 18.43 +/-0.5%   |
| Configuration               | C-MOS LSI   |
| Interface                   | Parallel, Serial  |
| Character type              | Extended graphics character set, Other characters available with CG's or external RAM |
| Character matrix (HxW dots) | 16 dot characters: 16x8, 16x16<br>24 dot characters: 24x12, 24x24                     |
| Dimensions (WxDxH mm)       | 22.0x16.0x3.1   |

Auto-Cutter

| Model                 |                                  | ACU2224                                     | ACU2324            | ACU2424             |
|-----------------------|----------------------------------|---|--------------------|---------------------|
| Cutting               | Method                           | Slide type                                  |                    |                     |
|                       | Paper width (mm)                 | 60 <sup>±0.1</sup>                          | 80 <sup>±0.1</sup> | 112 <sup>±0.1</sup> |
|                       | Paper thickness (μm)             | 65 to 125*                                  |                    |                     |
|                       | Cutting type                     | Full cut/Partial cut (Leaving center point) |                    |                     |
|                       | Operating time (max sec/cycle)   | 0.5   |                    |                     |
|                       | Cutting pitch (min. mm)          | 10  |                    |                     |
|                       | Cutting frequency (max cuts/min) | 30  |                    |                     |
|                       | Operating Voltage (V)            | Motor                                       | 21.6 to 26.4       |                     |
|                       | Detector (control switch)        | 4.75 to 5.25                                |                    |                     |
| Starting Current (A)  |                                  | 1.2   |                    |                     |
| Life (cut)            |                                  | 300,000                                     |                    |                     |
| Dimensions (WxDxH mm) |                                  | 79.0x66.5x16.5                              | 100.0x66.5x17.0    | 126.0x69.3x17.5     |
| Mass (g)              |                                  | Approx. 120                                 | Approx. 200        | Approx. 260         |

\*Use recommended thermal paper  
\*\*Excluding protrusion

# Mouser Electronics

Authorized Distributor

Click to View Pricing, Inventory, Delivery & Lifecycle Information:

## Seiko Instruments:

[LTP2242D-C432A-E](#) [LTP2442D-C832A-E](#) [PT230P01-E](#) [LTP2242C-S432A-E](#) [LTP2342C-S576A-E](#) [LTP2342D-C576A-E](#) [ACU2224F-A-E](#) [ACU2324C-A-E](#) [ACU2424B-A-E](#) [LTP2342D-C576A](#)