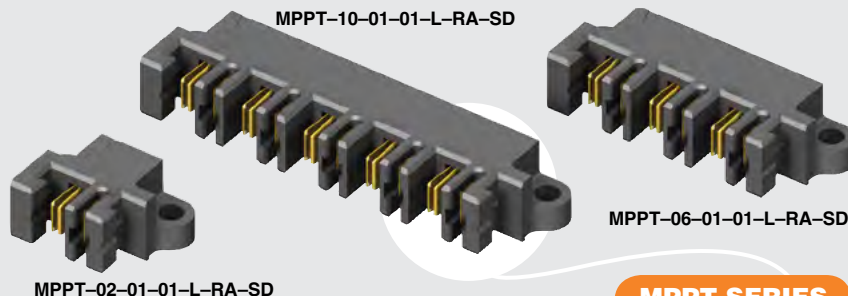




(5.00 mm) .1969"



MPPT SERIES

# HERMAPHRODITIC 30 A POWER SYSTEM

## SPECIFICATIONS

For complete specifications see [www.samtec.com?MPPT](http://www.samtec.com?MPPT)

### Insulator Material:

Black LCP

### Terminal Material:

Copper Alloy

### Plating:

Sn or Au over 50  $\mu$ "

(1.27  $\mu$ m) Ni

### Operating Temp Range:

-55 °C to +105 °C with Tin;

-55 °C to +125 °C with Gold

### Voltage Rating:

600 VAC/848 VDC

### Standard Creepage:

(2.95 mm) .116"

### Standard Clearance:

(2.71 mm) .106"

### RoHS Compliant:

Yes

### Lead-Free Solderable:

Yes

Mates with:

MPPT

MPPT/MPPT	
PINS	CURRENT RATING (PER CONTACT)
1	23.3 A
2	20.5 A
3	19.4 A
4	18.4 A
ALL	17.2 A

Dual leaf  
contacts



Screw down  
option

Dual blade post

RUGGEDIZED  
BY SAMTEC

• Screw down option

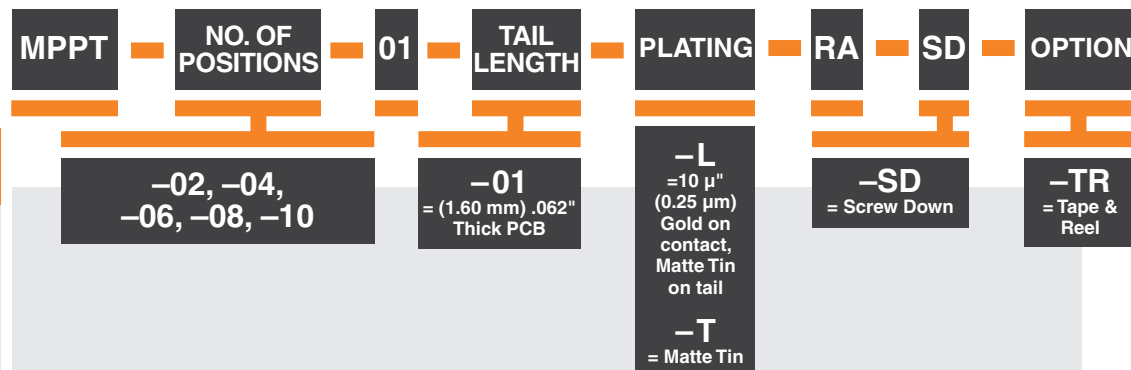
## RECOGNITIONS

For complete scope of recognitions see [www.samtec.com/quality](http://www.samtec.com/quality)

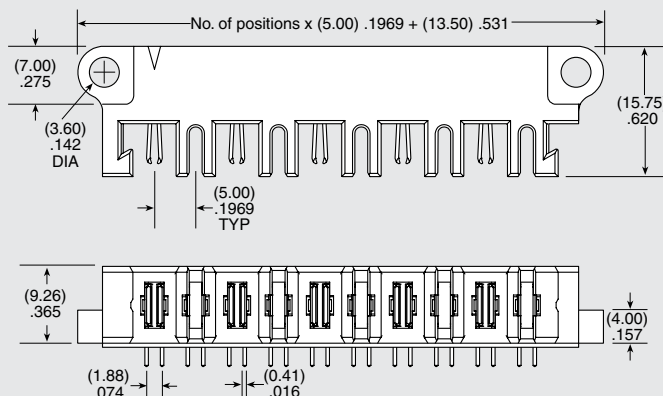
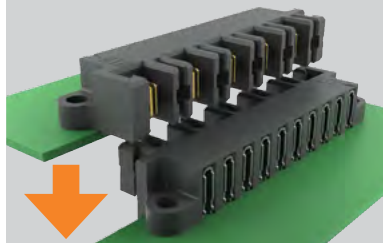


## ALSO AVAILABLE (MOQ Required)

- Locking Clip (Manual placement required)
  - Solder Leads for (2.36 mm) .093" thick board
  - Increased creepage and clearance with the removal of contacts
- Contact Samtec.



## APPLICATION



**Note:** Some sizes, styles and options are non-standard, non-returnable.