

6A to 30A, 250VAC EMI Filters

Features

- ◆ Two Stage for High Attenuation
- ◆ Screw Terminals with Cover
- ◆ Improved Performance over MB Series



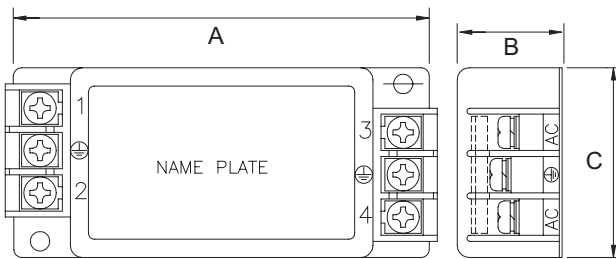
Last time buy - June 1, 2014

Specifications						
Model		MXB1206-33		MXB1210-33	MXB1220-33	MXB1230-33
Rated Voltage (AC,DC)		V	250V			
Rated Current (AC,DC) (1)		A	6	10	20	30
Test Voltage (terminal to case, AC 1 min.)		V	2500V (20mA) at 25°C, 70% RH			
Isolation Resistance (terminal to case, 500VDC)		Ω	100MΩ min. at 25°C, 70% RH			
Leakage Current		-	125V, 60Hz, 0.5mA max.; 250V, 60Hz, 1.0mA max.			
DC Resistance		mΩ	300 max.	100 max.	20 max.	10 max.
Temperature Rise		°C	35°C max.		40°C max.	
Operating Temperature (1)		°C	-25 to +85°C			
Operating Humidity		%	30% to 90% RH (non-condensing)			
Storage Temperature		°C	-30 to +85°C			
Storage Humidity		%	10% to 95% RH (non-condensing)			
Vibration		-	Sweep:10-55-10Hz (1min.), Amplitude 1.5mm X, Y, and Z axes, 2 hours each			
Safety Standard		-	Approved by UL1283, CSA C22.2 No.8 (C-UL), EN133200 (VDE0565)			

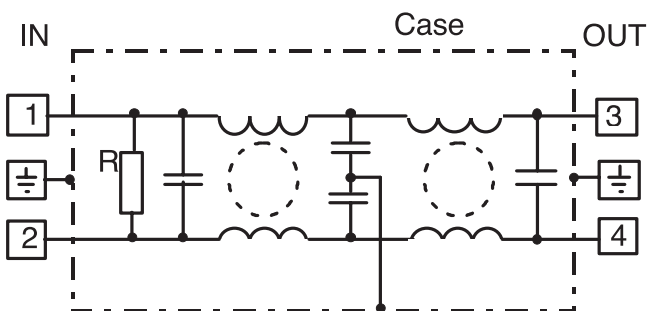
Notes:

- (1) Value at $T_a \leq 50^\circ\text{C}$. Refer to the derating curve at $T_a > 50^\circ\text{C}$.
- (2) Value at $T_a \leq 45^\circ\text{C}$. Refer to the derating curve at $T_a > 45^\circ\text{C}$.
- (3) See Derating Curve.

Outline Drawing



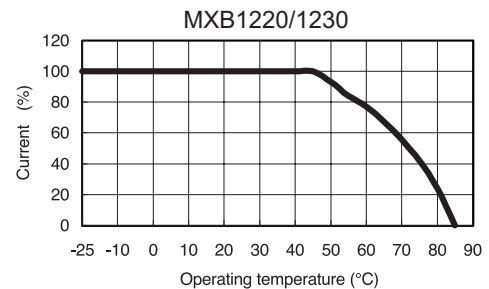
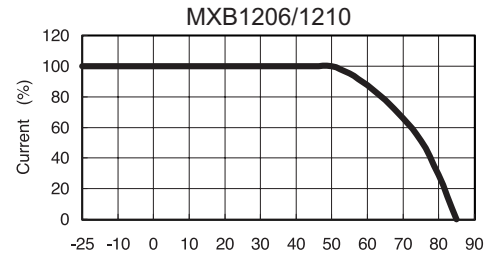
Circuit



Dimensions

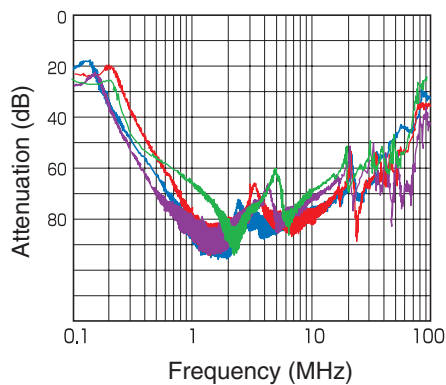
Model	L x H x W (mm)			Weight (g)
	A	B	C	
MXB1206-33	111	26	47	220
MXB1210-33	121	30	47	310
MXB1220-33	151	35	52	530
MXB1230-33	151	35	67	660

Derating



Typ. Attenuation, Symmetrical

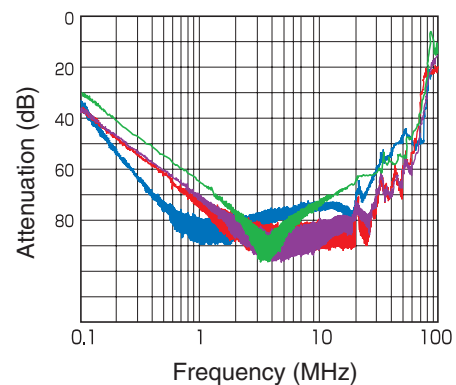
MXB1206-33 **MXB1210-33**



MXB1220-33 **MXB1230-33**

Typ. Attenuation, Asymmetrical

MXB1206-33 **MXB1210-33**



MXB1220-33 **MXB1230-33**

For Additional Information, please visit
us.tdk-lambda.com/lp/products/mxb-series.htm



Last time buy - June 1, 2014

Mouser Electronics

Authorized Distributor

Click to View Pricing, Inventory, Delivery & Lifecycle Information:

[TDK-Lambda:](#)

[MXB-1206-33](#) [MXB-1210-33](#) [MXB-1220-33](#) [MXB-1230-33](#)