
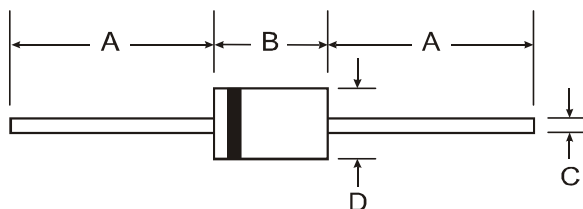


Features

- Diffused Junction
- Ultra-Fast Switching for High Efficiency
- Surge Overload Rating to 60A Peak
- Low Reverse Leakage Current
- **Lead Free Finish, RoHS Compliant (Note 4)**

Mechanical Data

- Case: DO-15
- Case Material: Molded Plastic. UL Flammability Classification Rating 94V-0
- Moisture Sensitivity: Level 1 per J-STD-020D
- Terminals: Finish – Tin. Solderable per MIL-STD-202, Method 208 
- Polarity: Cathode Band
- Marking: Type Number
- Ordering Information: See Page 3
- Weight: 0.4 grams (approximate)



| DO-15 | | |
|----------------------|-------|-------|
| Dim | Min | Max |
| A | 25.40 | — |
| B | 5.50 | 7.62 |
| C | 0.686 | 0.889 |
| D | 2.60 | 3.60 |
| All Dimensions in mm | | |

Maximum Ratings and Electrical Characteristics

@T_A = 25°C unless otherwise specified

Single phase, half wave, 60Hz, resistive or inductive load.
 For capacitive load, derate current by 20%.

| Characteristic | Symbol | UF 2001 | UF 2002 | UF 2003 | UF 2004 | UF 2005 | UF 2006 | UF 2007 | Unit |
|--|--|-------------|---------|---------|---------|---------|---------|---------|------|
| Peak Repetitive Reverse Voltage Working Peak Reverse Voltage DC Blocking Voltage (Note 5) | V _{RRM} V _{RWM} V _R | 50 | 100 | 200 | 400 | 600 | 800 | 1000 | V |
| RMS Reverse Voltage | V _{R(RMS)} | 35 | 70 | 140 | 280 | 420 | 560 | 700 | V |
| Average Rectified Output Current (Note 1) @ T _A = 50°C | I _O | 2.0 | | | | | | | A |
| Non-Repetitive Peak Forward Surge Current 8.3ms Single Half Sine-Wave Superimposed on Rated Load | I _{FSM} | 60 | | | | | | | A |
| Forward Voltage @ I _F = 2.0A | V _{FM} | 1.0 | | | 1.3 | 1.7 | | | V |
| Peak Reverse Current @ T _A = 25°C at Rated DC Blocking Voltage (Note 5) @ T _A = 100°C | I _{RM} | 5.0 100 | | | | | | | μA |
| Reverse Recovery Time (Note 3) | t _{rr} | 50 | | | | 75 | | | ns |
| Typical Total Capacitance (Note 2) | C _T | 50 | | | | 30 | | | pF |
| Typical Thermal Resistance Junction to Ambient | R _{θJA} | 50 | | | | | | | °C/W |
| Operating and Storage Temperature Range | T _J , T _{STG} | -65 to +150 | | | | | | | °C |

- Notes:
1. Valid provided that leads are maintained at ambient temperature at a distance of 9.5mm from the case.
 2. Measured at 1.0MHz and applied reverse voltage of 4.0V DC.
 3. Measured at I_F = 0.5A, I_R = 1.0A, I_{rr} = 0.25A. See figure 5.
 4. RoHS revision 13.2.2003. High temperature solder exemption applied, see *EU Directive Annex Note 7*.
 5. Short duration pulse test used to minimize self heating effect.

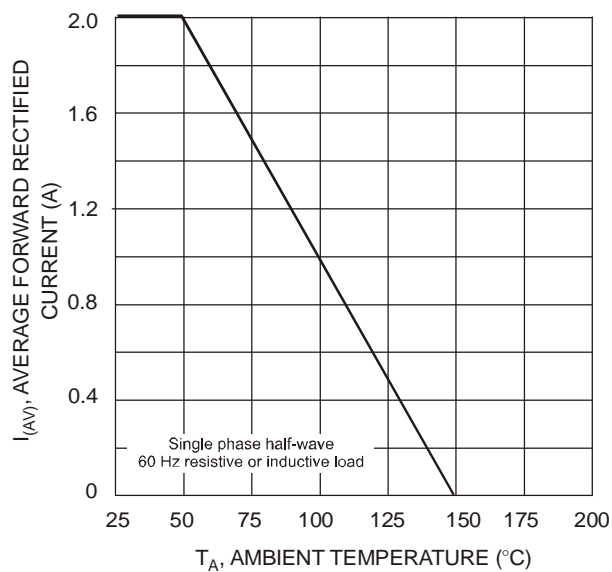


Fig. 1 Forward Current Derating Curve

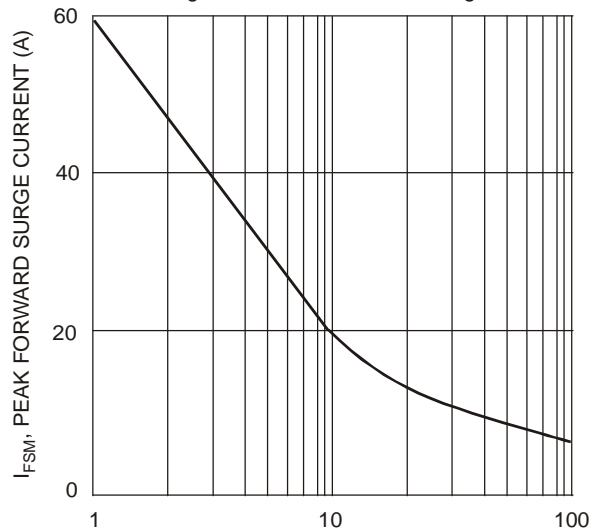
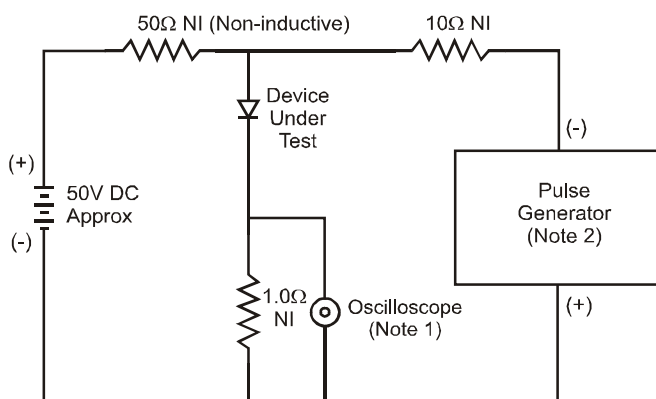


Fig. 3 Peak Forward Surge Current



Notes:

1. Rise Time = 7.0ns max. Input Impedance = 1.0M Ω , 22pF.
2. Rise Time = 10ns max. Input Impedance = 50 Ω .

Fig. 5 Reverse Recovery Time Characteristic and Test Circuit

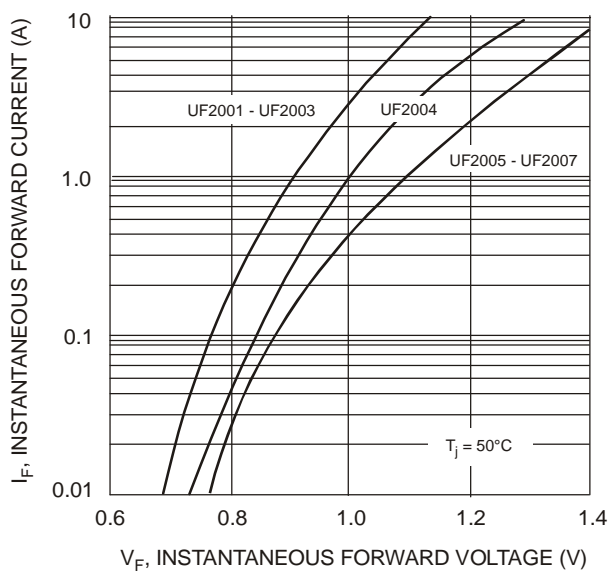


Fig. 2 Typical Forward Characteristics

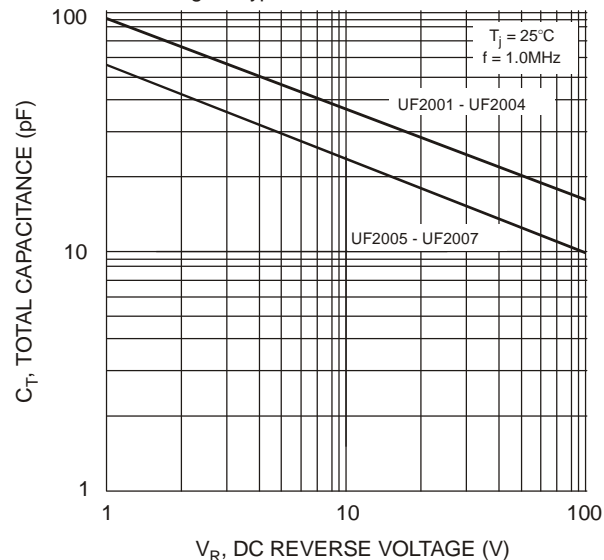
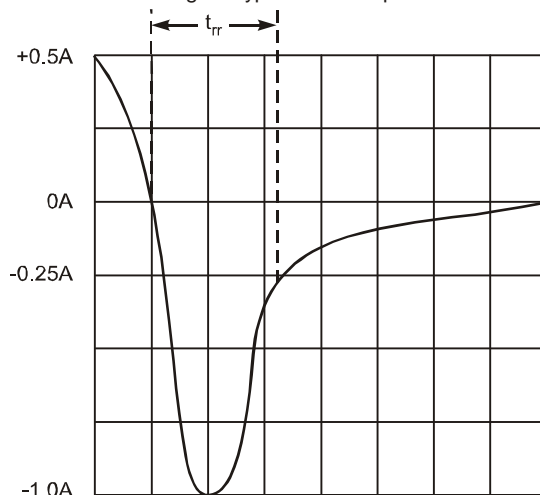


Fig. 4 Typical Total Capacitance



Set time base for 50/100 ns/cm

Ordering Information (Note 6)

| Device | Packaging | Shipping |
|----------|-----------|-------------------------|
| UF2001-T | DO-15 | 4K/Tape & Reel, 13-inch |
| UF2002-T | DO-15 | 4K/Tape & Reel, 13-inch |
| UF2003-T | DO-15 | 4K/Tape & Reel, 13-inch |
| UF2004-T | DO-15 | 4K/Tape & Reel, 13-inch |
| UF2005-T | DO-15 | 4K/Tape & Reel, 13-inch |
| UF2006-T | DO-15 | 4K/Tape & Reel, 13-inch |
| UF2007-T | DO-15 | 4K/Tape & Reel, 13-inch |

Notes: 6. For packaging details, visit our website at <http://www.diodes.com/datasheets/ap02007.pdf>.

IMPORTANT NOTICE

Diodes Incorporated and its subsidiaries reserve the right to make modifications, enhancements, improvements, corrections or other changes without further notice to any product herein. Diodes Incorporated does not assume any liability arising out of the application or use of any product described herein; neither does it convey any license under its patent rights, nor the rights of others. The user of products in such applications shall assume all risks of such use and will agree to hold Diodes Incorporated and all the companies whose products are represented on our website, harmless against all damages.

LIFE SUPPORT

Diodes Incorporated products are not authorized for use as critical components in life support devices or systems without the expressed written approval of the President of Diodes Incorporated.

Mouser Electronics

Authorized Distributor

Click to View Pricing, Inventory, Delivery & Lifecycle Information:

[Diodes Inc.:](#)

[UF2002-T](#) [UF2003-T](#) [UF2005-T](#) [UF2006-T](#)