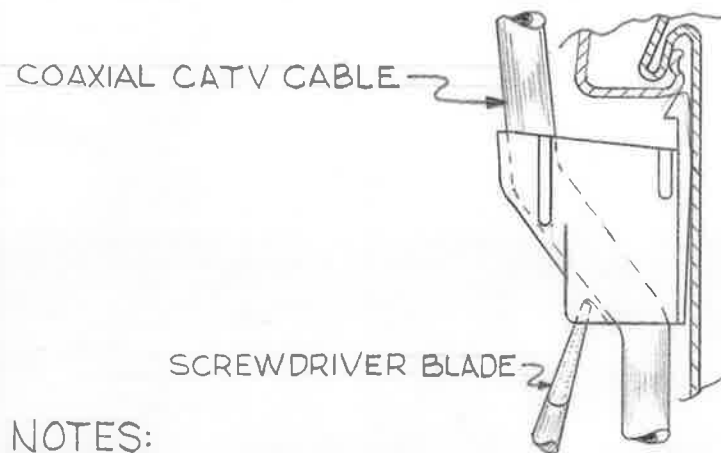


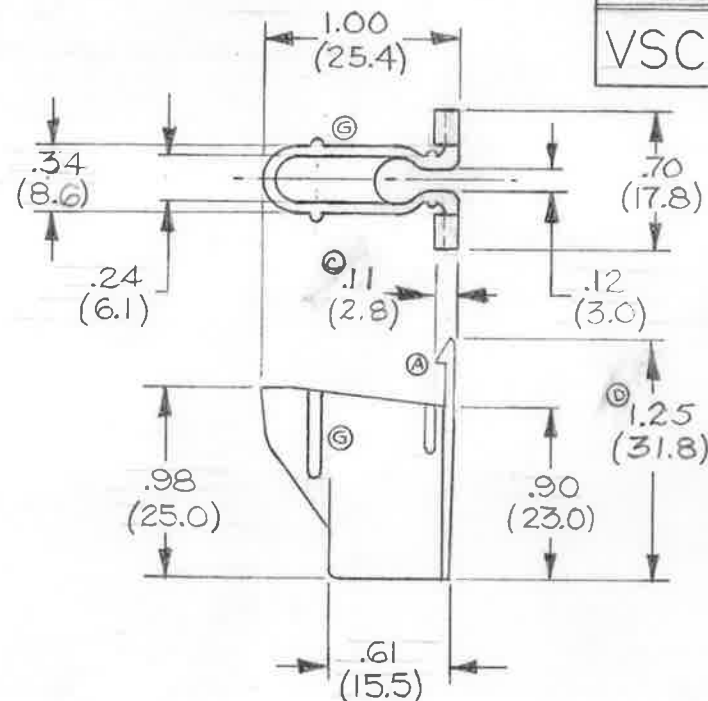
THIS COPY IS PROVIDED ON A RESTRICTED BASIS AND IS NOT TO BE USED IN ANY WAY DETRIMENTAL TO THE INTERESTS OF PANDUIT CORP.

TO INSTALL VERTICAL SIDING CLIP

1. SNAP THE WIRE INTO THE CLIP, THEN PLACE THE TAPERED END OF THE CLIP INTO POSITION UNDER THE LAP JOINT OF THE SIDING.
2. HOLD THE CLIP IN PLACE WITH A SCREWDRIVER BY PLACING THE SCREWDRIVER BLADE IN NOTCH AT THE BOTTOM OF THE CLIP AS ILLUSTRATED BELOW. BUMP THE END OF THE SCREWDRIVER HANDLE SO THAT THE CLIP SNAPS INTO THE LAP JOINT OF THE SIDING.



PANDUIT PART NUMBER*	WEIGHT lbs./100 pcs. (g)
VSC.25	.47 (212)



NOTES:

- *1. SEE CURRENT PRICE SHEET FOR PART NUMBER SUFFIX DESIGNATION FOR PACKAGE SIZE AND PART COLOR.
2. DESIGNED FOR USE ON ALUMINUM AND STEEL SIDING WITH THE PITTSBURGH INTERLOCK TYPE LAP JOINT.
3. RECOMMENDED FOR INSTALLATION OF 1/4" DIA. RG59/U AND ⑥ RG6/U TYPES COAXIAL CATV CABLE.

DIMENSIONS IN PARENTHESES ARE IN METRIC

PANDUIT

CORP. TINLEY PARK, ILLINOIS

VERTICAL SIDING CLIP, VSC.25

UNLESS OTHERWISE SPECIFIED,
DIMENSIONAL TOLERANCES ARE:
(.X) ± .005 (XXX) ± .010
(.XX) ± .015 (4) ANGLES ± .010

UNLESS OTHERWISE SPECIFIED, ALL DIMENSIONS
ARE GIVEN IN INCHES.
THIRD ANGLE PROJECTION.

DRAWN BY
A.J. CEPKO

DATE
7-3-78

CHK'D
K.P.

MAT'L ⑥ POLYPROPYLENE

COLOR: ⑥

WEATHER RESISTANT

BLACK.

SCALE
1:1

DRAWING NO.

SS7122

DWG.

A

SIZE

REV.	DATE	BY	CHK	DESCRIPTION	ECN	R	CUST	SUP	GMBH	CHK'D
2	8-27-81	K.J.S.	JK	⑥ CHANGED K.D. RIB LOCATION	7122	2	GR	10/5/82		
1	2-25-81	JK	JK	⑥ CHANGED LATCH DESIGN	7122	1				
				⑥ ELIMINATED NATURAL						
				⑥ .11(2.8) WAS .14(3.6), ⑥ 1.25(31.8)						
				WAS 1.20(30.5), ⑥ POLYPROPYLENE						
				WAS NYLON 6/6, ⑥ ADDED RG6/U						
R	7-20-78	Ac	H/P	DRAWING RELEASED.						

AMEYA360

Components Supply Platform

Authorized Distribution Brand :



Website :

Welcome to visit www.ameya360.com

Contact Us :

➤ Address :

401 Building No.5, JiuGe Business Center, Lane 2301, Yishan Rd
Minhang District, Shanghai , China

➤ Sales :

Direct +86 (21) 6401-6692

Email amall@ameya360.com

QQ 800077892

Skype ameyasales1 ameyasales2

➤ Customer Service :

Email service@ameya360.com

➤ Partnership :

Tel +86 (21) 64016692-8333

Email mkt@ameya360.com