

**Tyco / Electronics**  
**Raychem Circuit Protection**  
 308 Constitution Drive  
 Menlo Park, CA 94025-1164  
 Phone: 800-227-4856  
 Fax: 800-227-4866

**Polyswitch®**  
**PTC Devices**  
 Overcurrent Protection Device

**PRODUCT: SMD150-2018**

DOCUMENT: SCD 24257  
 PCN: 672851  
 REV LETTER: F  
 REV DATE: JANUARY 30, 2004  
 PAGE NO.: 1 OF 1

**Specification Status: Released**

**Maximum Electrical Ratings**

Operating Voltage / Interrupt Current

15Vdc / 40A

12Vdc / 60A

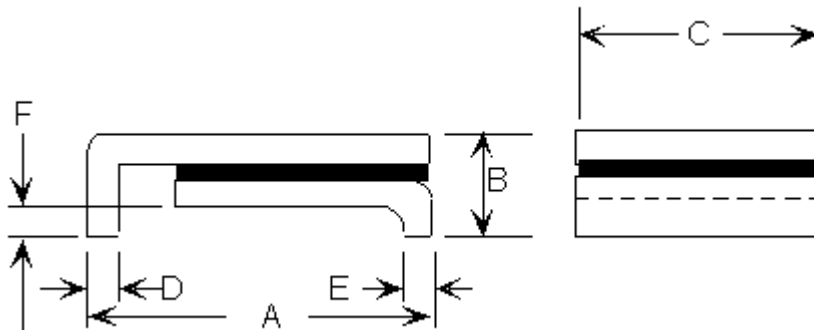
5Vdc / 125A

Marking:

 **A15**

Manufacturer's Mark

Part Identification



Notes:

1. All metal surfaces are tin plated.
2. Devices cannot be wave soldered.
3. Drawing not to scale.

**TABLE I. DIMENSIONS:**

	A		B		C		D		E		F	
	MIN	MAX	MIN	MAX	MIN	MAX	MIN	MAX	MIN	MAX	MIN	MAX
mm:	4.72	5.44	--	1.52	4.22	4.93	0.25	0.36	0.25	0.36	0.30	0.46
in*:	(0.186)	(0.214)	--	(0.060)	(0.166)	(0.194)	(0.010)	(0.014)	(0.010)	(0.014)	(0.012)	(0.018)

\*Rounded off approximation

**TABLE II. PERFORMANCE RATINGS:**

CURRENT RATINGS**						TIME TO TRIP**	RESISTANCE VALUES		TRIPPED-STATE POWER DISSIPATION**
AMPS AT 0°C		AMPS AT 20°C		AMPS AT 60°C		SECONDS AT 20°C, 8.0A MAX	OHMS AT 20°C		WATTS AT 20°C MAX
HOLD	TRIP	HOLD	TRIP	HOLD	TRIP		MIN	MAX*	
1.7	4.0	1.5	3.0	1.0	2.4	1.0	0.070	0.180	1.8

\* Maximum resistance is measured 1 hour after reflow

\*\* Values specified were determined using PCB's with 0.070"x1.5 ounce copper traces

Reference Documents:

PS300, E.N. SMD 1.0x

Precedence:

This specification takes precedence over documents referenced herein.

Effectivity:

Reference documents shall be the issue in effect on the date of invitation for bid.

CAUTION:

Operation beyond the rated voltage or current may result in rupture, electrical arcing or flame.