

C&K H Series Power ROTA-SLIDE® Rotary Switches

Features/Benefits

- **Multi-pole and multi-position**
- **Positive detent**
- **Power switching up to 12 AMPS**
- **Value added capability**

Typical Applications

- **Small appliances**
- **Industrial equipment**
- **Elevators**



Specifications

CONTACT RATING: 12 Amps @ 125 V AC; 6 AMPS @ 250 V AC;
1 AMP @ 125 V DC (UL/CSA).

ELECTRICAL LIFE: 10,000 make-and-break cycles at full load.

INSULATION RESISTANCE: $10^9 \Omega$ min.

DIELECTRIC STRENGTH: 1,000 Vrms min. @ sea level.

INDEXING: 45°-one contact models, 8 positions max.; two contact models, 4 positions max.

OPERATING & STORAGE TEMPERATURE: -30°C to 95°C

NOTE: Any models supplied with Q, B or G contact material are RoHS compliant. For the latest information regarding RoHS compliance, please go to:
www.ittcannon.com/rohs.

NOTE: Specifications and materials listed above are for switches with standard options. For information on specific and custom switches, consult Customer Service Center.

Materials

HOUSING & BUSHING: 6/6 nylon (UL 94V-2).

ACTUATOR: 6/6 nylon (UL 94V-2).

CONTACTS & TERMINALS: Copper, silver plated.

CONTACT SPRING: Music wire or stainless steel.

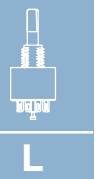
MOUNTING NUT: Steel, zinc plated.

TERMINAL SEAL: Epoxy.

Build-A-Switch

To order, simply select desired option from each category and place in the appropriate box. Available options are shown and described on pages L-46 thru L-47. For additional options not shown in catalog, consult Customer Service Center.

<p>Switch Function</p> <p>H203 DP, 45° Index, 3 pos.</p> <p>H101 SPST, 45° Index</p> <p>H202 DPDT, 45° Index</p> <p>H204 DP, 45° Index, 4 pos.</p>	<p>Actuator</p> <p>07 .275" high with .156" flat</p>	<p>Mounting Style</p> <p>RR 3/8-40 threaded bushing</p>	<p>Terminations</p> <p>05 .110" quick connect</p> <p>01 Solder lug with notch</p>	<p>Contact Material</p> <p>Q Silver</p>
---	--	---	--	---



Rotary



Dimensions are shown: Inch (mm)
Specifications and dimensions subject to change

C&K H Series

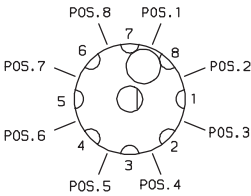
Power ROTA-SLIDE® Rotary Switches

SWITCH FUNCTION

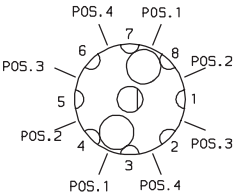
SP MODELS 45° INDEXING			
NO. POLES	MODEL NO.	SWITCH FUNCTION	TERMINALS
SP	H101	SPST	8-1

DP MODELS 45° INDEXING			
NO. POLES	MODEL NO.	SWITCH FUNCTION	TERMINALS
DP	H202	DPDT	7-8-1, 3-4-5
	H203	3 Position	All Terminals
	H204	4 Position	All Terminals

SP MODELS 45° INDEXING SCHEMATIC

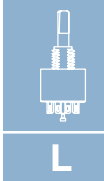


DP MODELS 45° INDEXING SCHEMATIC

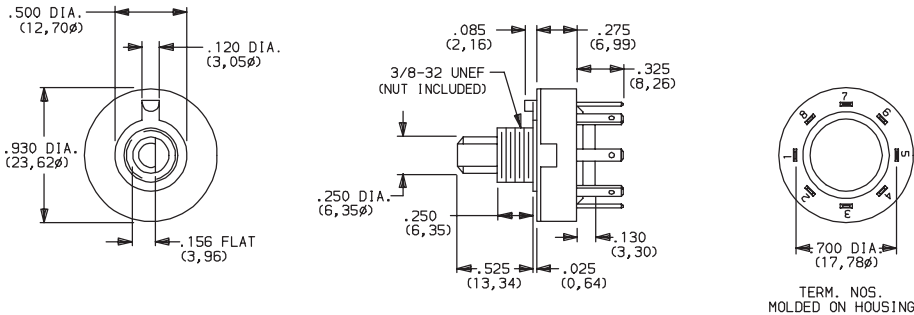


NOTE: Break-before-make contacts. Terminal numbers are molded on bottom of housing. Actuators and contacts are shown in position 1. No common terminal is present. Switching function is provided by movable contacts shorting adjacent pairs of stationary contacts.

All models with all options.

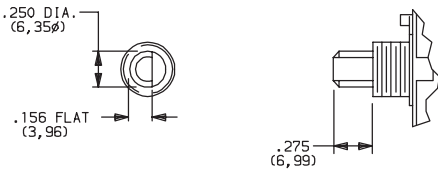


Rotary



ACTUATOR

07 .275" HIGH WITH .156" FLAT

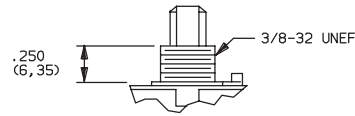


Dimensions are shown: Inch (mm)
Specifications and dimensions subject to change

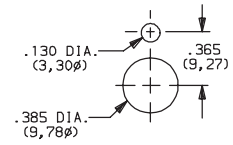
C&K H Series Power ROTA-SLIDE® Rotary Switches

MOUNTING STYLE

RR 3/8-32 THREADED BUSHING



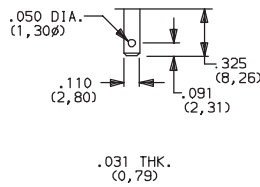
PANEL MOUNTING



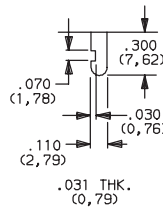
Mounting nut included (part number 175000100).

TERMINATIONS

05 SOLDER LUG WITH HOLE



01 SOLDER LUG WITH NOTCH



Not available on models with 90° indexing.

CONTACT MATERIAL

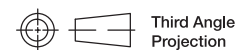
OPTION CODE	RoHS COMPLIANT*	RoHS COMPATIBLE*	CONTACT AND TERMINAL MATERIAL	RATING	
Q	YES	YES	SILVER ¹	POWER	12 AMPS @ 125 V AC; 6 AMPS @ 250 V AC; 1 AMP @ 125 V DC.

* Note: See Technical Data section of this catalog for RoHS compliant and compatible definition and specifications.

¹ CONTACTS & TERMINALS: Copper, silver plated.

NOTE: Any models supplied with Q contact material are RoHS compliant. For the latest information regarding RoHS compliance, please go to: www.ittcannon.com/rohs.

All models   with all options.



Dimensions are shown: Inch (mm)
Specifications and dimensions subject to change

www.ittcannon.com



Rotary