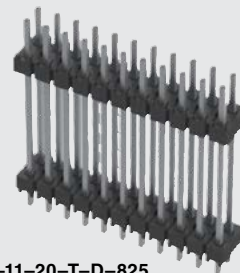


HW-14-08-G-S-300-100



DW-11-20-T-D-825

(2.54 mm) .100"

DW, EW, ZW, HW-TH SERIES

# FLEXIBLE .025" SQ BOARD STACKERS

**Mates with:**

SSW, SSQ, ESW, ESQ,  
CES, SLW, BSW, BCS,  
SSM, HLE, PHF

**Cable Mates:**

IDSS, IDSD, SMSD, SMSS

**SPECIFICATIONS**

For complete specifications  
see [www.samtec.com?DW](http://www.samtec.com?DW),  
[www.samtec.com?EW](http://www.samtec.com?EW),  
[www.samtec.com?ZW](http://www.samtec.com?ZW) or  
[www.samtec.com?HW-TH](http://www.samtec.com?HW-TH)
**Insulator Material:**

DW, EW, ZW: Black Glass  
Filled Polyester  
HW: Natural Liquid  
Crystal Polymer

**Terminal Material:**

Phosphor Bronze

**Plating:**

Au or Sn over

50  $\mu$ " (1.27  $\mu$ m) Ni

**Operating Temp Range:**

-55 °C to +125 °C with Gold

-55 °C to +105 °C with Tin

**RoHS Compliant:**

Yes

**Lead-Free Solderable:**

DW, EW, ZW:

No, Lead Wave Only

HW: Yes

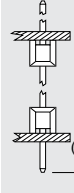
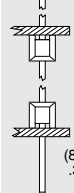
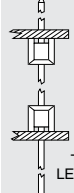
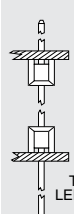
**RECOGNITIONS**

For complete scope of  
recognitions see  
[www.samtec.com/quality](http://www.samtec.com/quality)

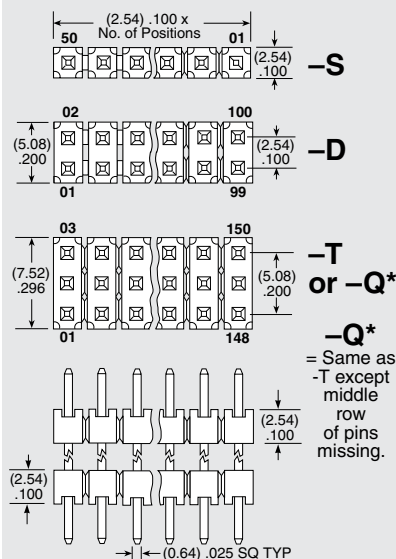

FILE NO. E111594



FILE NO. 090871\_0\_000

**TYPE  
STRIP**
**DW**  
= (2.79 mm)  
.110" Tail

**EW**  
= (8.38 mm)  
.330" Tail

**ZW**  
= Custom Tail

**HW**  
= High Temp  
Custom Tail

**NO. PINS  
PER ROW**
**LEAD  
STYLE**
**PLATING  
OPTION**
**ROW  
OPTION**
**STACKER  
HEIGHT**
**OTHER  
OPTIONS**
**Specify LEAD STYLE  
from chart**

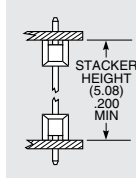
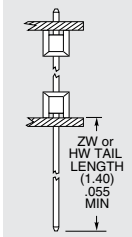
LEAD STYLE	OAL
-07	(10.92) .430
-08	(13.46) .530
-09	(18.54) .730
-10	(21.08) .830
-11	(23.62) .930
-12	(26.16) 1.030
-13	(31.24) 1.230
-14	(36.32) 1.430
-15	(16.00) .630
-16	(11.30) .445
-17	(12.19) .480
-19	(33.78) 1.330
-20	(28.70) 1.130

**01 thru 50**

**-S**  
= Single  
Row

**-D**  
= Double  
Row

**-T**  
= Triple  
Row

**-Q**  
= Double  
Row .200"  
(5.08 mm)  
row space

**-“XXX”**  
= Stacker  
Height

**-“XXX”**  
= ZW or HW  
Tail Length

**-LL**  
= Locking  
Lead  
(Shortest  
dimension  
between the  
tail and the  
post is the  
end that will  
be crimped.  
Available  
on tails from  
(2.29 mm)  
.090" to  
(7.87 mm)  
.310" only.)  
Single row, 01  
& 02 positions  
& -Q row not  
available

**-F**  
= Gold flash on contact,  
Matte Tin on tail

**-L**  
= 10  $\mu$ " (0.25  $\mu$ m) Gold on contact  
area of longer tail,  
Matte Tin on tail

**-G**  
= 10  $\mu$ " (0.25  $\mu$ m) Gold on contact  
area of longer tail,  
Gold flash on balance

**-T**  
= Matte Tin

**-“XXX”**  
= Polarized

Specify omitted  
pin position

**ALSO AVAILABLE  
(MOQ Required)**

- Other platings  
Contact Samtec.

**Note:** For added mechanical  
stability, Samtec recommends  
mechanical board spacers be  
used in applications with gold or  
selective gold plated connectors.  
Contact [ipg@samtec.com](mailto:ipg@samtec.com) for  
more information.

**Note:** This Series is  
non-standard, non-returnable.