

WLB92



Industrial LED Light Bar

The WLB92: Design aesthetics for an office - Rugged durability for the factory.

- Increase worker productivity and ergonomics with bright, high-quality, uniform light
- Durable light stands up in your environment with a rugged metal housing and shatterproof light cover
- No maintenance time or cost with long-life, energy-efficient LEDs
- Flexibility to place light where needed with ac and dc models
- Easy installation with variety of mounting options: surface, swivel, snap and hanging brackets
- AC models are DLC certified and have a five year warranty



WLB92
Industrial LED Light Bar

Advanced LED lighting for your factory, flexibility for you.

With the WLB92, there are a variety of mounting options, ac and dc models and a dimming function available to suit your lighting needs.

AC or DC models available with a variety of connection options

Models available with industry-standard conduit knockouts for continuous run and permanent installations

Dimming knob (optional) allows you to customize light levels

ON/OFF switch

Rugged, anodized aluminum housing



Choose from two lengths:
550 or 1100 mm

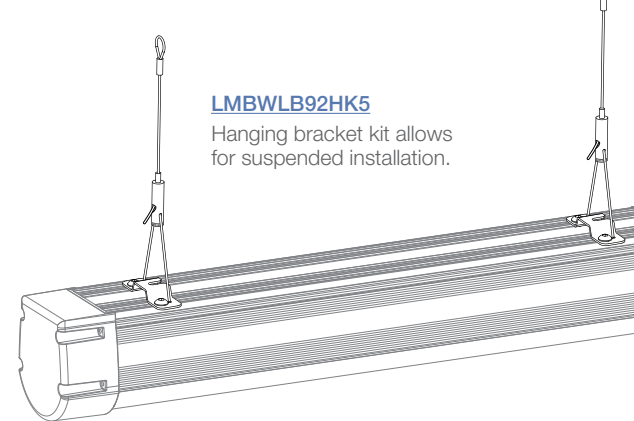
Impact-resistant, light-diffusing
polycarbonate window for even light
output (Daylight White—5000 K)

Quick-disconnect for
cabinet, bench and
portable applications.



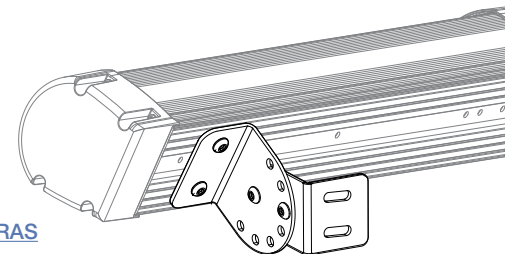
LMBWLB92HK5

Hanging bracket kit allows
for suspended installation.



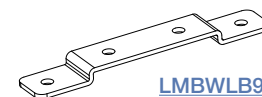
LMBWLB92RAS

Swivel brackets allow for 180° of
movement in seven fixed positions.



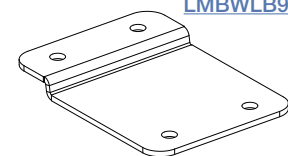
Simple Installation with a Variety of Mounting Options

Choose from surface, swivel,
snap and hanging brackets.

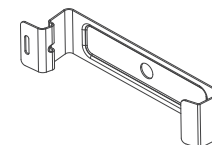


LMBWLB92

Surface mount brackets
allow for mounting at the
end of the light.




LMBWLB92S



LMBWLB92CLIP

Snap clips allow for a
tool-less installation.



WLB92 Industrial LED Light Bar



AC Conduit Models

example: WLB92ZC550ACT

| Family | Voltage | Cascadable | Lighted Length | Control | Connector |
|--------------|----------|----------------|-------------------|---------------------------|--------------------|
| WLB92 | Z | C | 550 | A | CT |
| | Z = AC | C = Cascadable | 550 mm 1100 mm | A = 0-10 V Analog Dimming | CT = Conduit Entry |

AC Quick-Disconnect Models

example: WLB92ZC550PBQMB

| Family | Voltage | Cascadable | Lighted Length | Control | Connector | Plug Type (1.8 m cable) |
|--------------|----------|----------------|-------------------|---------------------------|-----------|---|
| WLB92 | Z | C | 550 | PB | QM | B |
| | Z = AC | C = Cascadable | 550 mm 1100 mm | PB = Switch, Dimming Knob | QM = AC | B = D = EF = See table G = at right for I = description N = C = AC connector with flying leads Blank = No power cord |

DC Models

example: WLB92X550PBQ

| Family | Cascadable | Lighted Length | Control | Connector |
|--------------|--------------------|-------------------|--|--|
| WLB92 | X | 550 | PB | Q |
| | X = Non-Cascadable | 550 mm 1100 mm | PB = Switch, Dimming Knob PWM = Dimmable via Pulse Width Modulation | Blank = 2 m Integral Cable Q = Integral 4-pin Euro QD QD models require mating cordset |

Accessories

AC Power Cordset 1.8 m (6')
for use with models using QM connector

[LQMAC-306](#)

Flying Leads

[LQMAC-306B](#)North & Central America,
Japan, Taiwan[LQMAC-306D](#)India, Sri Lanka, Nepal,
Namibia[LQMAC-306EF](#)France, Belgium, Slovakia,
Tunisia, Germany, Austria,
Netherlands, Spain, S. Korea[LQMAC-306G](#)UK, Ireland, Cyprus, Malta,
Malaysia, Singapore, Hong
Kong, Vietnam[LQMAC-306I](#)Australia, New Zealand,
Papua New Guinea,
Argentina, China[LQMAC-306N](#)

Brazil

For use with DC models



**4-Pin M12/
Euro-Style Cordsets**

Straight connector models
listed; for right-angle, add RA
to the end of the model number
(example, MQDC-406RA)

[MQDC-406](#)

2 m (6.5')

[MQDC-415](#)

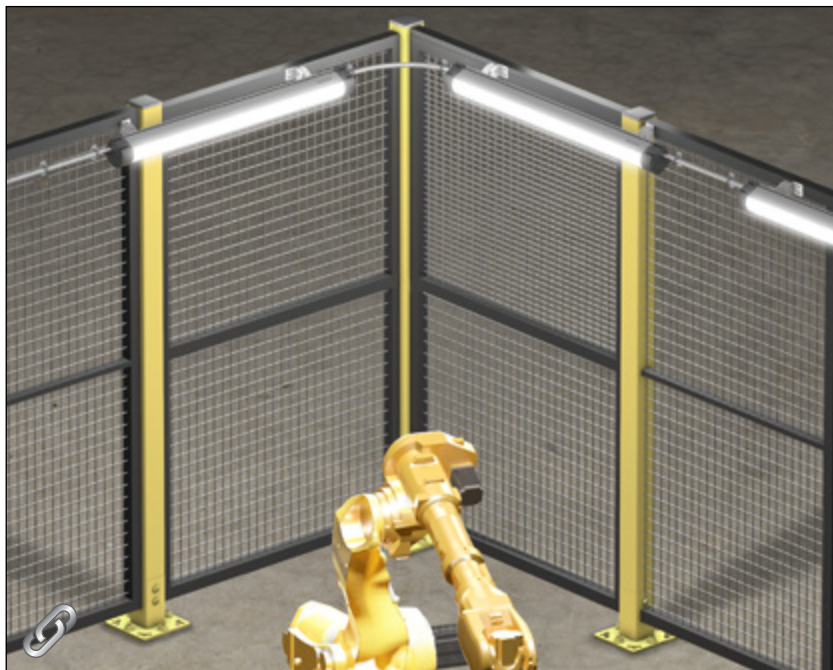
5 m (15')

[MQDC-430](#)

9 m (30')



WLB92
Industrial LED Light Bar



Robotic Work Cell Lighting



High-Quality LED Lights Improve Quality Inspection

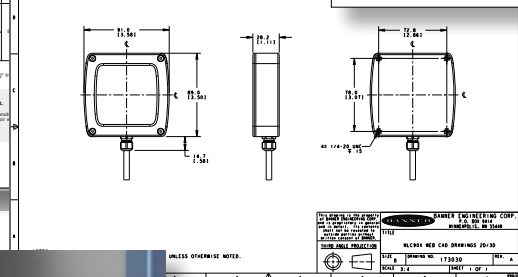
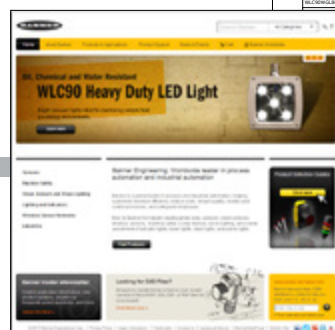
WLB92
Industrial LED Light Bar

Link to data sheets

[illegible]

**Link to
catalog**

Link to the Banner website



**Link to
CAD files**



Link to videos



Talk with an app engineer. Get product specs. Order now.
1-888-373-6767 • bannerengineering.com