

Model P260/P261
 12.7mm (½") Square
 Rotary Potentiometer
 Sealed or Dust Proof
 Conductive Plastic Element
 1,000,000 Cycle Life
 Rotary Switch Option
 Detent Option
 Multiple Gangs available
 RoHS Compliant



MODEL STYLES

| | |
|--|-------|
| Side Adjust, PCB Leads, Potentiometer Module (Up to 6 gangs) | P260P |
| Side Adjust, PCB Leads, with Rotary Switch Module (Up to 5 gangs) | P260S |
| Side Adjust, PCB Leads, with Detent Module (Up to 6 gangs) | P260D |
| Top Adjust, PCB Leads, Potentiometer Module (Up to 2 gangs) | P260T |
| Side Adjust, Solder Lug Leads, Potentiometer Module (Up to 6 gangs) | P261P |
| Side Adjust, Solder Lug Leads, with Rotary Switch Module (Up to 5 gangs) | P261S |
| Side Adjust, Solder Lug Leads, with Detent Module (Up to 6 gangs) | P261D |

ELECTRICAL¹

| | |
|------------------------------------|------------------------------|
| Resistance Range, Ohms | 500 -1M |
| Standard Resistance Tolerance | ± 10% |
| Residual Resistance, Maximum | 2 ohms |
| Input Voltage, Maximum | 350 Vac |
| Power rating, Watts | 0.5W- B taper, 0.25W- others |
| Dielectric Strength | 1,500Vac, sea level |
| Insulation Resistance, Minimum | 1,000 Megohms |
| Gang Error (Multi-ganged), Maximum | +/-3 dB (-40 dB to 0dB) |
| Actual Electrical Travel, Nominal | 265° |
| Switch Contact Resistance, Maximum | 150 milliohms max. |
| Switch Power Rated | 0.5A at 30Vdc |

¹ Specifications subject to change without notice.

Model P260/P261

MECHANICAL

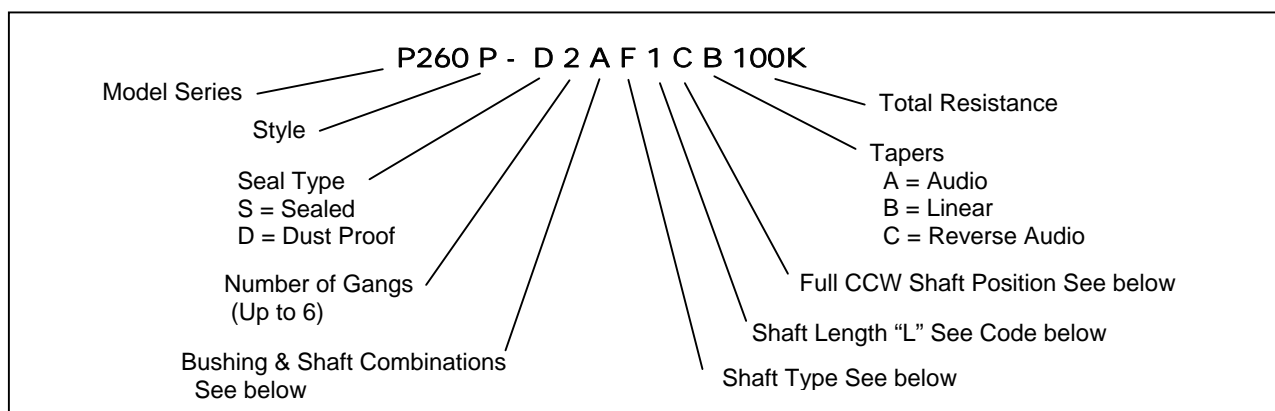
| | |
|----------------------------|---|
| Total Mechanical Travel | 295°± 10° |
| Static Stop Strength | 40 oz-in |
| Rotational Torque, Maximum | 1.5 oz-in (0.5 oz-in each additional gang) |
| Switch Detent, Minimum | 2.0 oz-in |

ENVIRONMENTAL

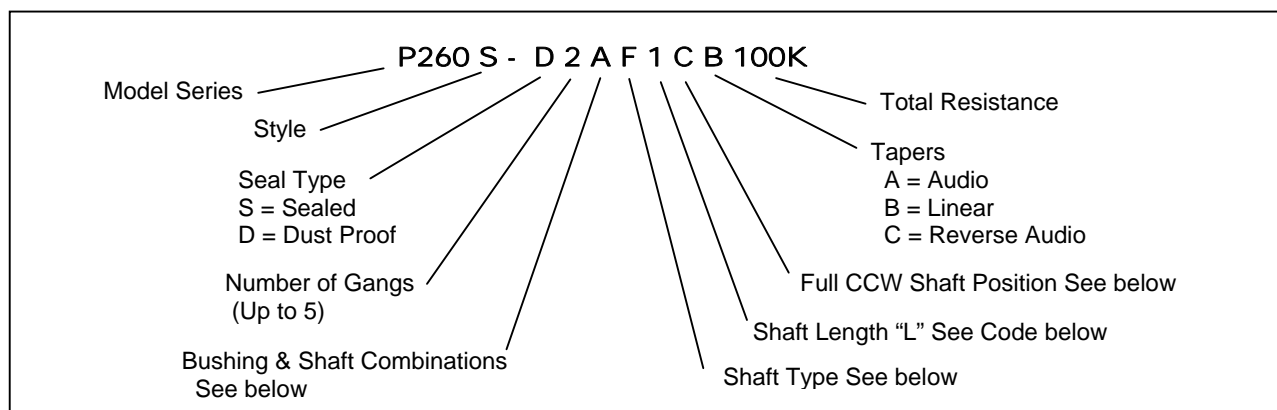
| | |
|-----------------------------|------------------------------------|
| Operating Temperature Range | -55°C to +125°C |
| Rotational Life | 1,000,000 cycles |
| IP Rating | Sealed = IP66 Dust Proof = IP50 |

ORDERING INFORMATION²

P260P/P261P – POTENTIOMETER MODULE



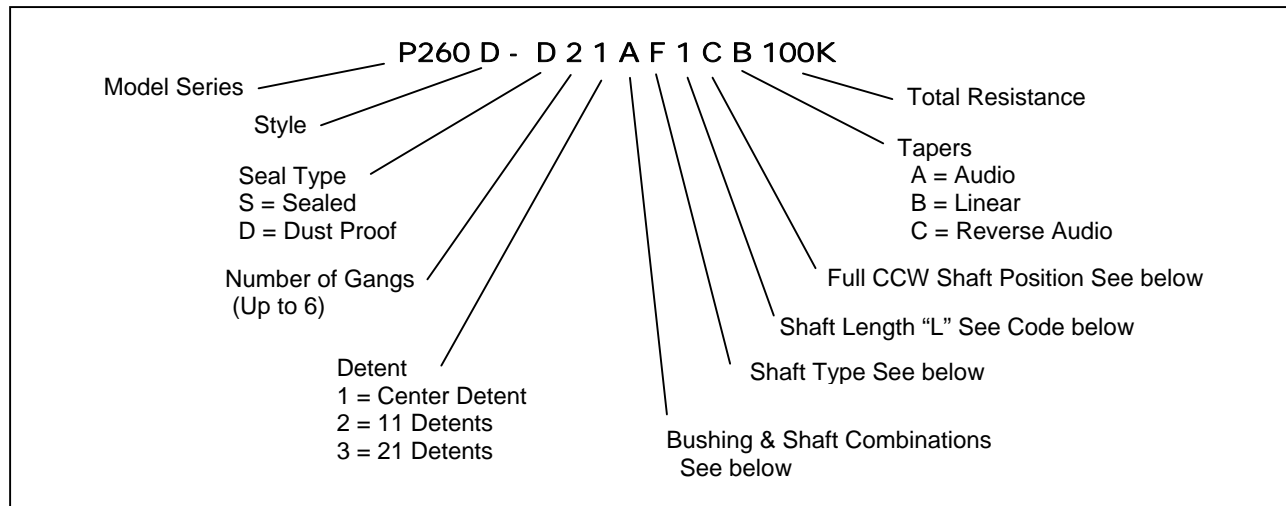
P260S/P261S – WITH ROTARY SWITCH MODULE



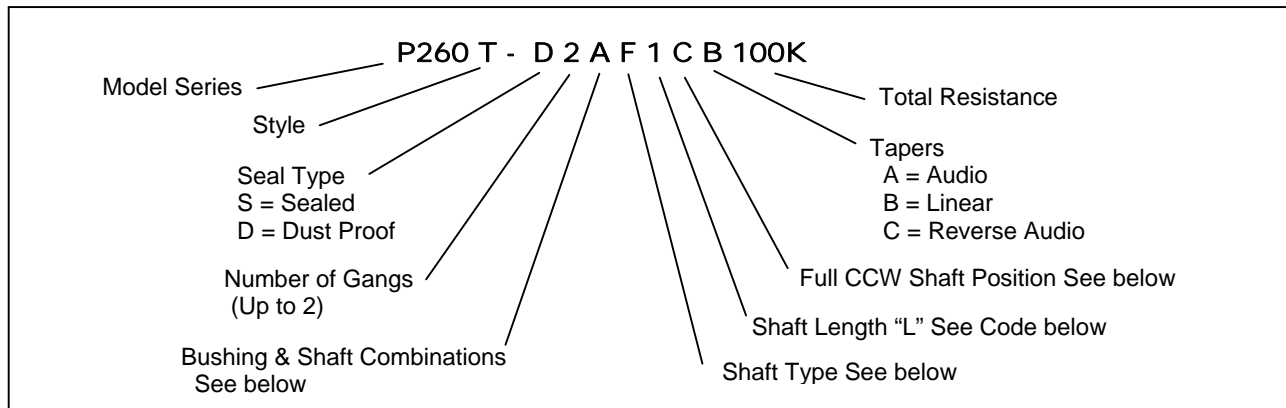
² Contact our customer service for custom designs and features.

Model P260/P261

P260D/P261D – WITH DETENT MODULE



P260T – TOP ADJUST, POTENTIOMETER MODULE



Bushing & Shaft Combinations

| CODE | BUSHING SIZE | BUSHING LENGTH "M" | SHAFT ϕ |
|------|---------------|--------------------|---------------|
| A | 6.35mm (1/4") | 6.35mm (1/4") | 3.2mm (1/8") |
| B | 9.5mm (3/8") | 9.5mm (3/8") | 6.35mm (1/4") |

Model P260/P261

Shaft Type and Shaft Length "L" Code For 3.2mm (1/8")

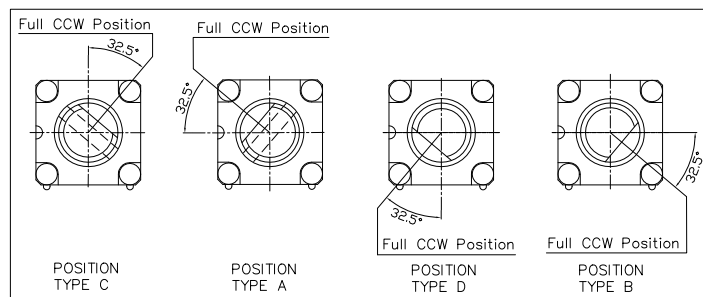
| S-TYPE | | | | | | | F-TYPE | | | | | | |
|--------|----|----|----|----|----|----|--------|----|----|----|----|----|----|
| | | | | | | | | | | | | | |
| L | 12 | 16 | 20 | 24 | 28 | 32 | L | 12 | 16 | 20 | 24 | 28 | 32 |
| T | | | | | | | T | 4 | 5 | 8 | 8 | 8 | 10 |
| CODE | 1 | 2 | 3 | 4 | 5 | 6 | CODE | 1 | 2 | 3 | 4 | 5 | 6 |

Shaft Type and Shaft Length "L" Code For 6.35mm (1/4")

| S-TYPE | | | | | | | F-TYPE | | | | | | |
|--------|----|----|----|----|----|----|--------|----|----|----|----|--|--|
| | | | | | | | | | | | | | |
| L | 12 | 16 | 20 | 24 | 28 | 32 | L | 20 | 24 | 28 | 32 | | |
| T | | | | | | | T | 8 | 8 | 12 | 12 | | |
| CODE | 1 | 2 | 3 | 4 | 5 | 6 | CODE | 3 | 4 | 5 | 6 | | |

Shaft Position (F-Type Shaft)

Dashed lines on Type "C" and Type "A" shows position of adjustment slot for S-Type



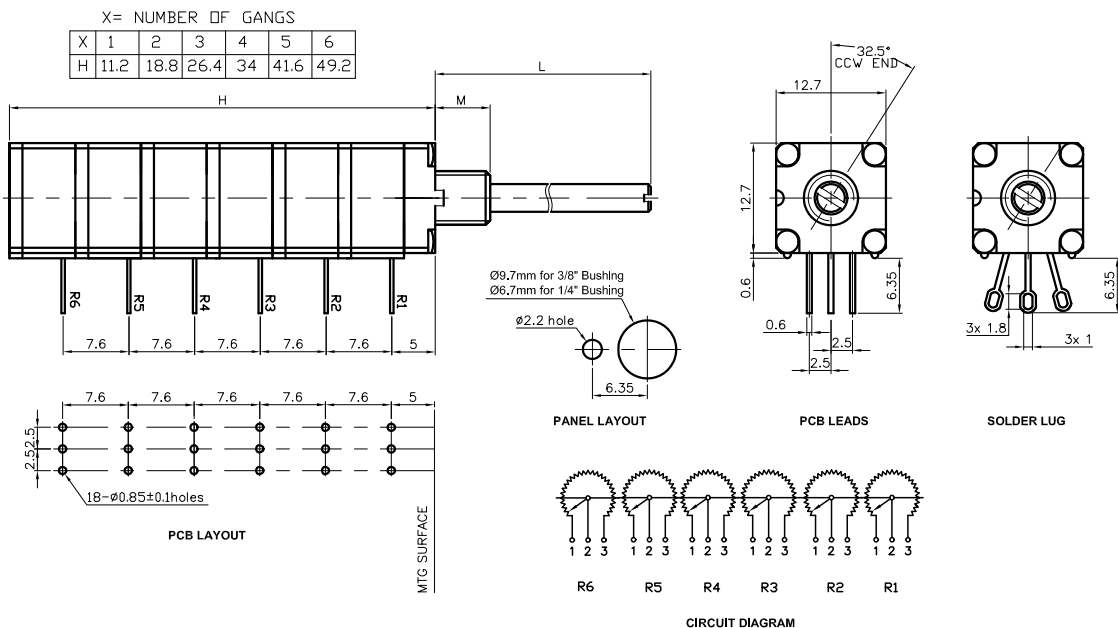
STANDARD RESISTANCE VALUES, OHMS

| | | | | | | | | | | |
|-----|----|----|----|-----|-----|-----|------|------|------|------|
| 500 | 1K | 2K | 5K | 10K | 20K | 50K | 100K | 200K | 500K | 1MEG |
|-----|----|----|----|-----|-----|-----|------|------|------|------|

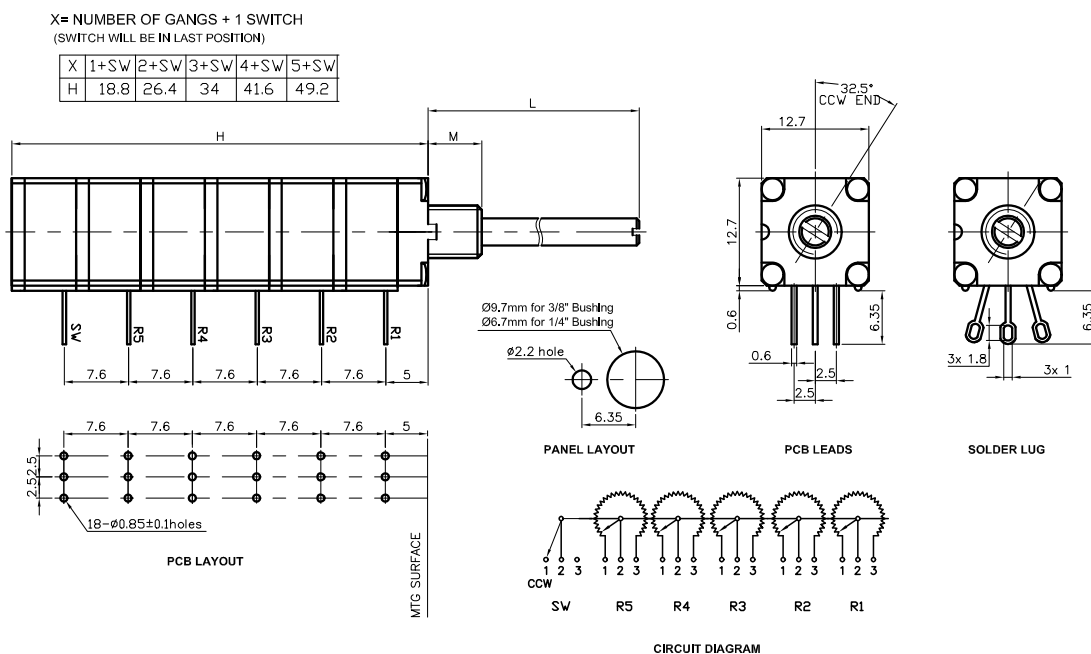
Model P260/P261

OUTLINE DRAWING

P260P/P261P - POTENTIOMETER MODULE

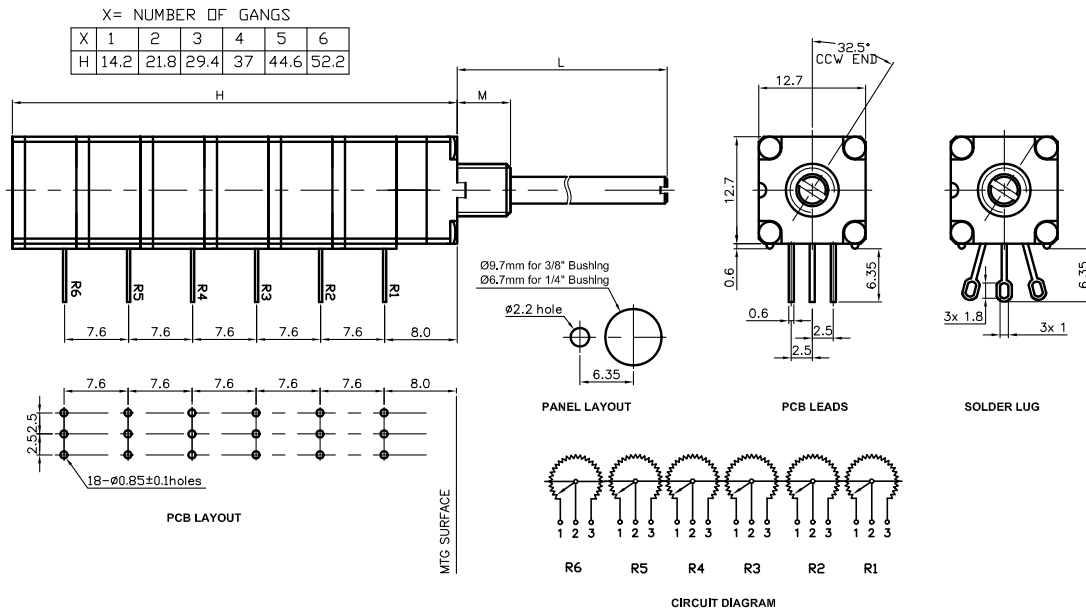


P260S/P261S - WITH ROTARY SWITCH MODULE



Model P260/P261

P260D/P261D - WITH DETENT MODULE



P260T - TOP ADJUST, POTENTIOMETER MODULE

