

# Customer Information Sheet

DRAWING No.: P25-XX26

SHEET 2 OF 2

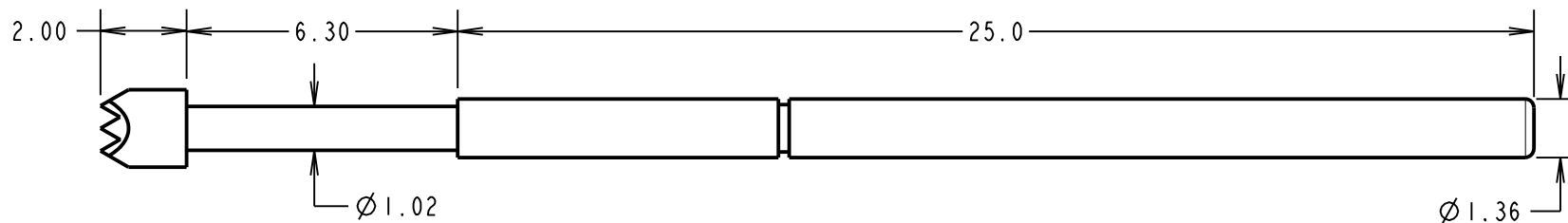
IF IN DOUBT - ASK

©

NOT TO SCALE

THIRD ANGLE PROJECTION

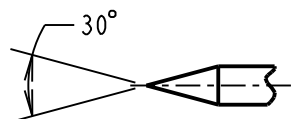
ALL DIMENSIONS IN mm



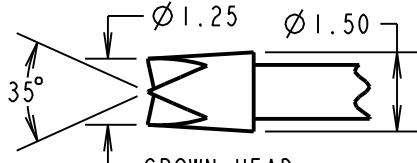
ORDER CODE:  
**P25-XX26**  
PROBE HEAD  
VARIANT (SEE BELOW)

- NOTES:
1. TO BE USED WITH SLEEVE S25-XX6.
  2. SUITABLE FOR A MINIMUM DISTANCE BETWEEN CENTRES OF 2.54mm.

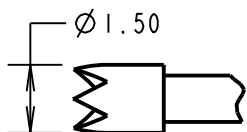
## PROBE HEAD VARIANTS



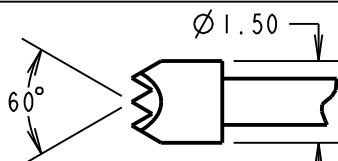
SPEAR HEAD  
P25-0126



CROWN HEAD  
P25-3226



TULIP HEAD  
P25-1726



SERRATED HEAD  
P25-4026

## SPECIFICATIONS:

### MATERIAL:

PLUNGER = BERYLLIUM COPPER  
BARREL = PHOSPHOR BRONZE  
SPRING = MUSIC WIRE

### FINISH:

PLUNGER, BARREL AND SPRING = GOLD OVER NICKEL

### ELECTRICAL:

CURRENT RATING = 3A  
CONTACT RESISTANCE = 30 MILLIOHMS

### MECHANICAL:

DURABILITY = 1,000,000 CYCLES  
FULL TRAVEL = 6.30mm

### SPRING FORCES:

AT FULL TRAVEL = 3.43N ± 0.69N (350g ± 20%)  
AT 2/3 TRAVEL = 2.26N ± 0.45N (230g ± 20%)

### ENVIRONMENTAL:

TEMPERATURE RANGE = -40°C TO +85°C

SM	5	16.03.11	11173
NAME	ISS.	DATE	C/NOTE
APPROVED:	S. MCCULLAGH		
CHECKED:	R. ADDE		
DRAWN:	W. J. BOURNE		
CUSTOMER REF.:			
ASSEMBLY DRG:			

**HARWIN**

<b>HARWIN USA</b> TEL: 603 893 5376 FAX: 603 893 5396 mis@harwin.com	<b>HARWIN Europe (UK)</b> TEL: 023 9231 4545 FAX: 023 9231 4590 mis@harwin.co.uk	<b>HARWIN Asia</b> TEL: +65 6 779 4909 FAX: +65 6 779 3868 mis@harwin.com.sg
---	---	---

THIS DRAWING AND ANY INFORMATION OR DESCRIPTIVE MATTER SET OUT HEREON ARE CONFIDENTIAL AND COPYRIGHT PROPERTY OF THE HARWIN GROUP AND MUST NOT BE DISCLOSED, LOANED, COPIED OR USED FOR MANUFACTURING, TENDERING OR FOR ANY OTHER PURPOSE WITHOUT THEIR WRITTEN PERMISSION.

### TOLERANCES

X. = ±1mm  
X.X = ±0.25mm  
X.XX = ±0.10mm  
X.XXX = ±0.01mm

ANGLES = ±5°

UNLESS STATED

### MATERIAL:

SEE ABOVE

FINISH: SEE ABOVE

S/AREA: mm<sup>2</sup>

### TITLE:

2.54mm MIN. CENTRE  
TWO-PIECE SPRING PROBE

DRAWING NUMBER:

**P25-XX26**

SHT  
2 OF 2

# Mouser Electronics

Authorized Distributor

Click to View Pricing, Inventory, Delivery & Lifecycle Information:

Harwin:

[P25-1726](#) [P25-3226](#) [P25-0126](#) [P25-4026](#)