

Panel Potentiometer

Model P08x Series



Features:

- 8 mm square
- Dust proof
- Detent option
- 100,000 cycle life
- Rotary switch option
- Multiple gangs available



Model Styles Available

Side Adjust, Potentiometer Module (Up to 4 gangs)	P08xN
Side Adjust, Potentiometer with Rotary Switch Module (Up to 4 gangs)	P08xS
Side Adjust, Potentiometer with Dual Shaft Module (2 or 4 gang)	P08xD
Side Adjust, Potentiometer with Dual Shaft and Rotary Switch Module (2 or 4 gang)	P08xE

Electrical

Resistance Range, Ohms	500 -1M (for "B" taper) 1K-1M (for other tapers)
Standard Resistance Tolerance	± 20%
Residual Resistance, Maximum	50 ohms
Input Voltage, Maximum	50 Vac
Power rating, Watts	0.05W- B taper, 0.025W- others
Dielectric Strength	300Vac, sea level
Insulation Resistance, Minimum	100 Megohms
Gang Error (Multi-ganged), Maximum	+/-3 dB (-40 dB to 0dB)
Actual Electrical Travel, Nominal	With Switch = 230° Without Switch =270°
Switch Contact Resistance, Maximum	100 milliohms max.
Switch Power Rated	3.0A at 16Vdc

Mechanical

Total Mechanical Travel	300°± 10°
Static Stop Strength	42 oz-in
Rotational Torque, Maximum	0.7 oz-in (0.2 oz-in each additional gang)
Switch Detent,	1.0 oz-in
Switch Travel angle	50°

General Note

TT Electronics reserves the right to make changes in product specification without notice or liability. All information is subject to TT Electronics' own data and is considered accurate at time of going to print.

TT Electronics | BI Technologies
4200 Bonita Place, Fullerton, CA USA 92835 | Ph: +1 714 447 2345
www.ttelectronics.com | sensors@ttelectronics.com

Panel Potentiometer

Model P08x Series

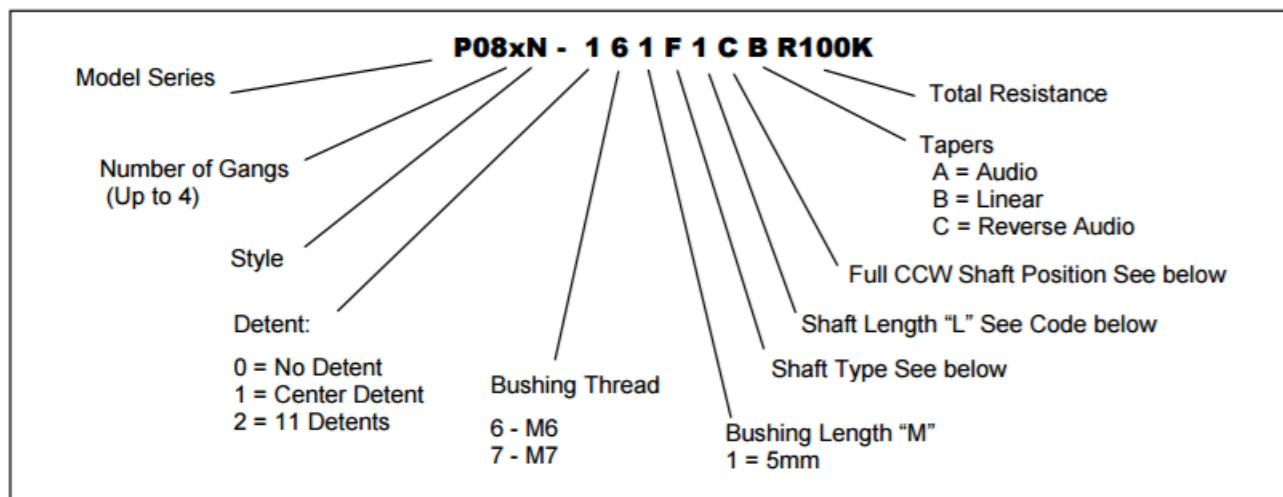


Environmental

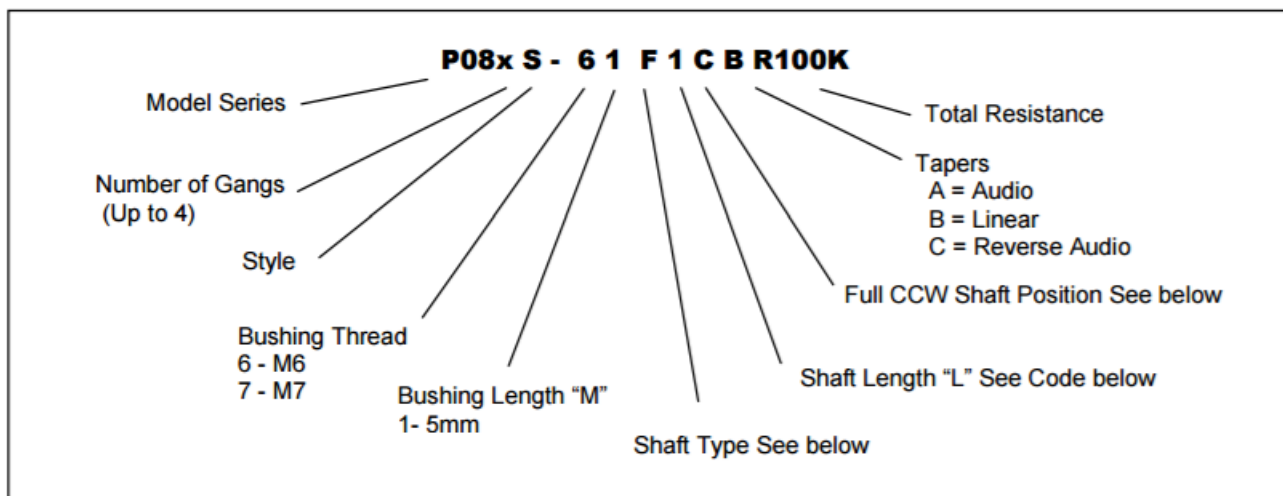
Operating Temperature Range	-55°C to +125°C	
Rotational Life	Switch = 30,000 cycles	Potentiometer = 100,000 cycles
IP Rating	Dust Proof = IP50	

Ordering

P08xN - POTENTIOMETER MODULE



P08xS - POTENTIOMETER WITH ROTARY SWITCH MODULE



General Note

TT Electronics reserves the right to make changes in product specification without notice or liability. All information is subject to TT Electronics' own data and is considered accurate at time of going to print.

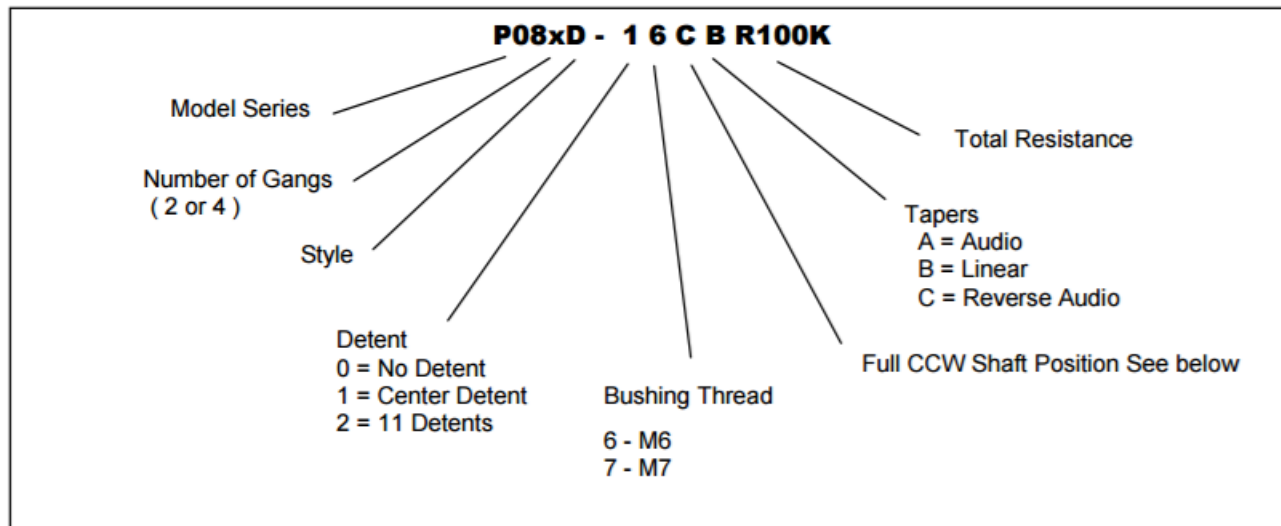
TT Electronics | BI Technologies
4200 Bonita Place, Fullerton, CA USA 92835 | Ph: +1 714 447 2345
www.ttelectronics.com | sensors@ttelectronics.com

Panel Potentiometer

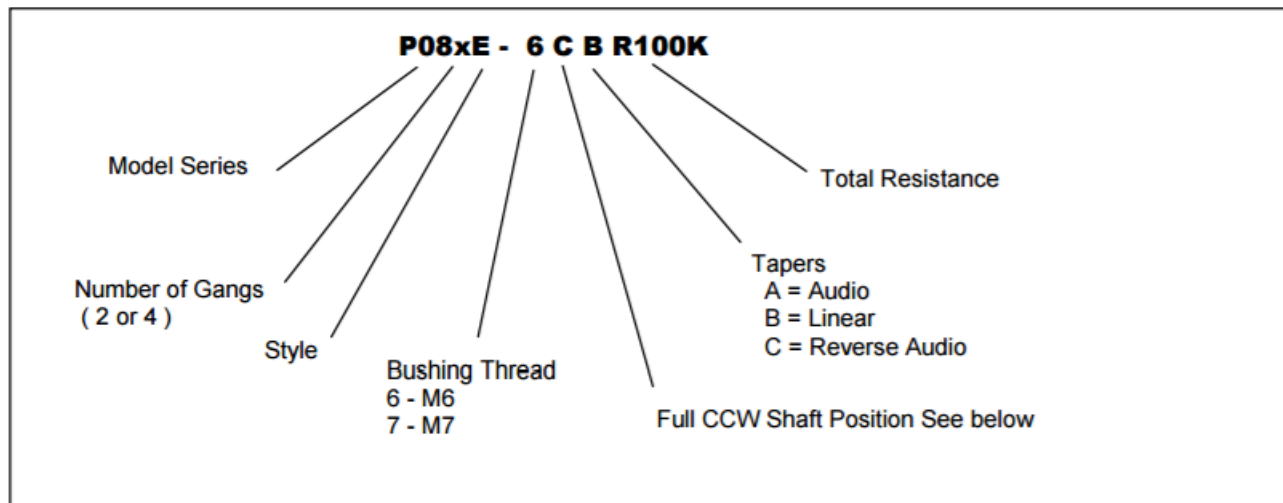
Model P08x Series



P08xD - POTENTIOMETER WITH DUAL SHAFT MODULE



P08xE - POTENTIOMETER WITH DUAL SHAFT AND ROTARY SWITCH MODULE



General Note

TT Electronics reserves the right to make changes in product specification without notice or liability. All information is subject to TT Electronics' own data and is considered accurate at time of going to print.

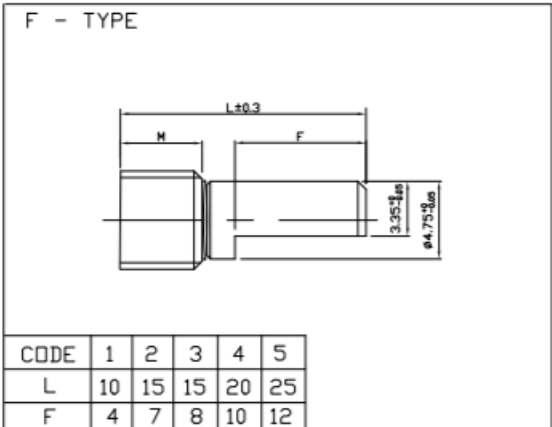
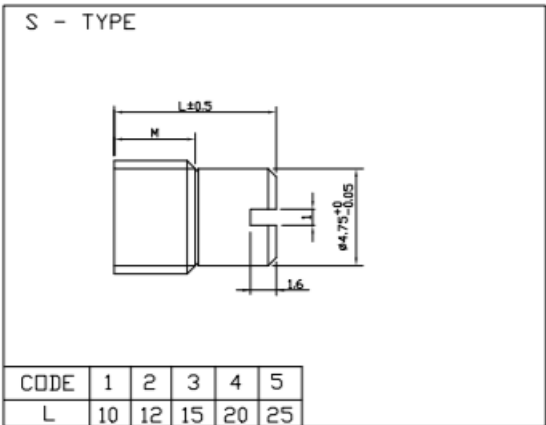
TT Electronics | BI Technologies
4200 Bonita Place, Fullerton, CA USA 92835 | Ph: +1 714 447 2345
www.ttelectronics.com | sensors@ttelectronics.com

Panel Potentiometer

Model P08x Series

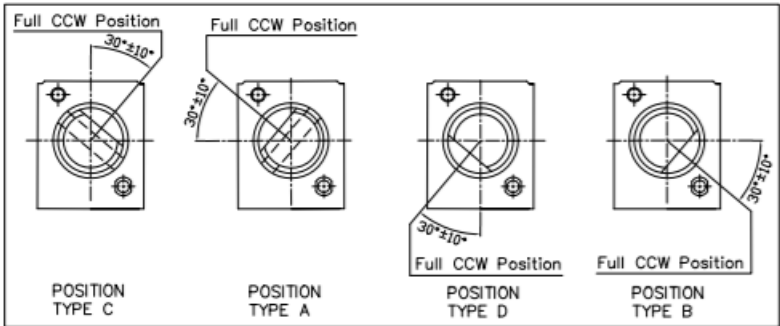


Shaft Length “L” Code – For Models P08xN and P08xS only



Shaft Position (F-Type Shaft)

Dashed lines on Type “C” and Type “A” shows position of adjustment slot for S-Type



STANDARD RESISTANCE VALUES, OHMS

500	1K	2K	5K	10K	20K	50K	100K	200K	500K	1MEG
-----	----	----	----	-----	-----	-----	------	------	------	------

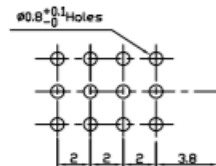
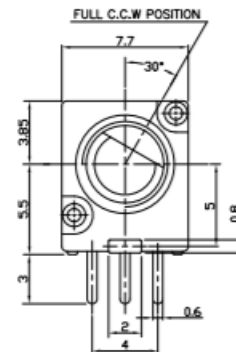
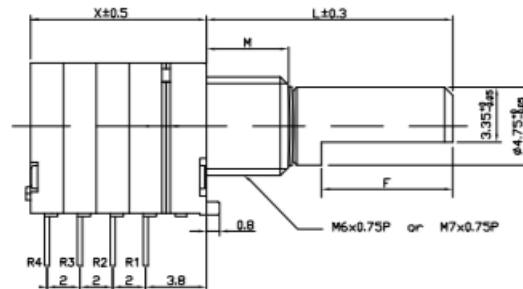
General Note
 TT Electronics reserves the right to make changes in product specification without notice or liability. All information is subject to TT Electronics’ own data and is considered accurate at time of going to print.

Model P08x Series

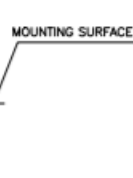


P08xN - POTENTIOMETER MODULE

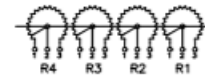
NUMBER OF GANGS	1	2	3	4
X	5	7	9	11



PCB LAYOUT



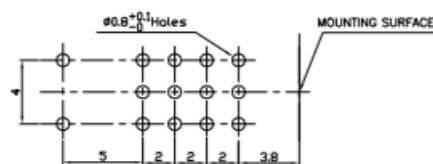
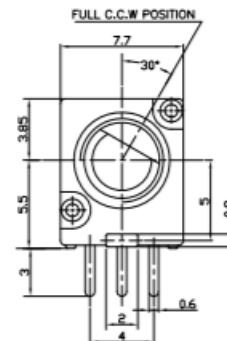
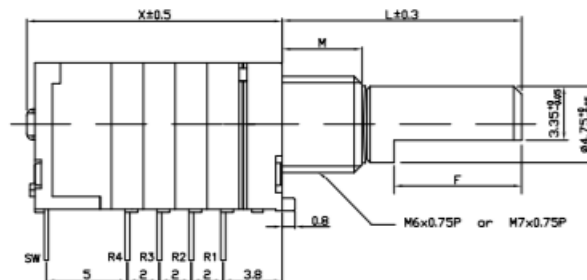
PANEL LAYOUT



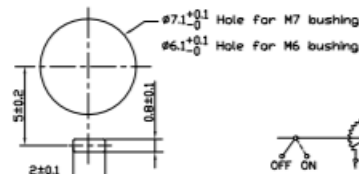
CIRCUIT

P08xS - POTENTIOMETER WITH ROTARY SWITCH MODULE

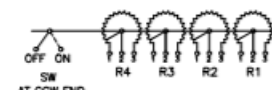
NUMBER OF GANGS	1	2	3	4
X	10	12	14	16



PCB LAYOUT



PANEL LAYOUT

CIRCUIT

General Note

TT Electronics reserves the right to make changes in product specification without notice or liability. All information is subject to TT Electronics' own data and is considered accurate at time of going to print.

TT Electronics | BI Technologies

4200 Bonita Place, Fullerton, CA USA 92835 | Ph: +1 714 447 2345
www.ttelectronics.com | sensors@ttelectronics.com

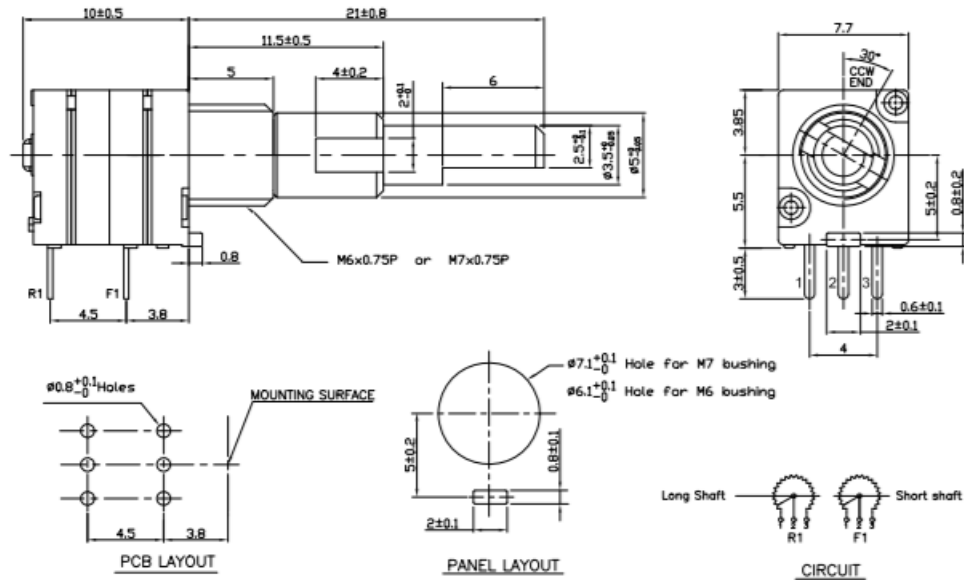
Panel Potentiometer

Model P08x Series

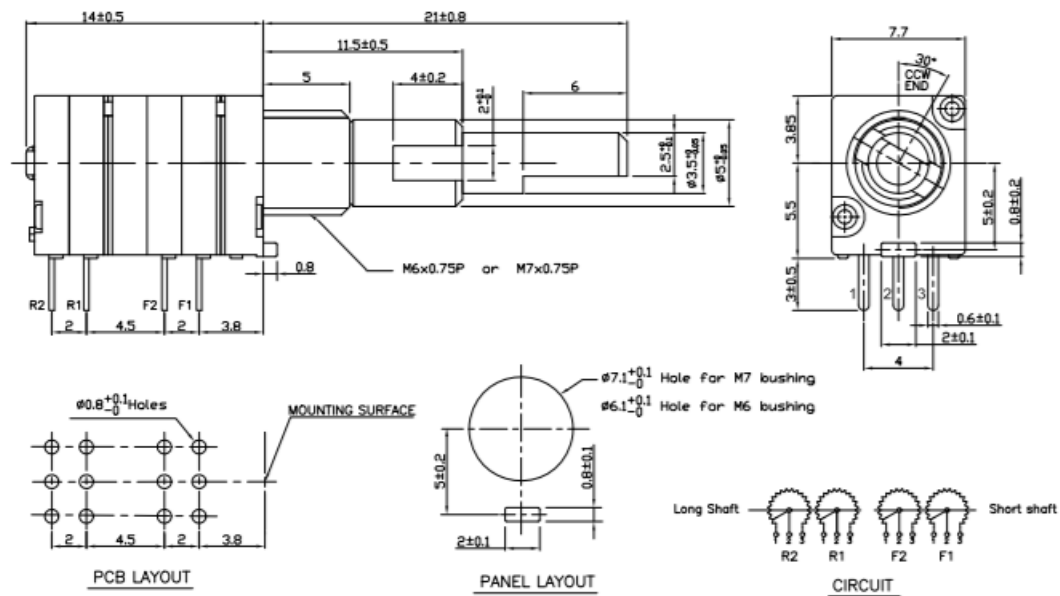


P08xD - POTENTIOMETER WITH DUAL SHAFT MODULE

2 GANG



4 GANG



General Note

TT Electronics reserves the right to make changes in product specification without notice or liability. All information is subject to TT Electronics' own data and is considered accurate at time of going to print.

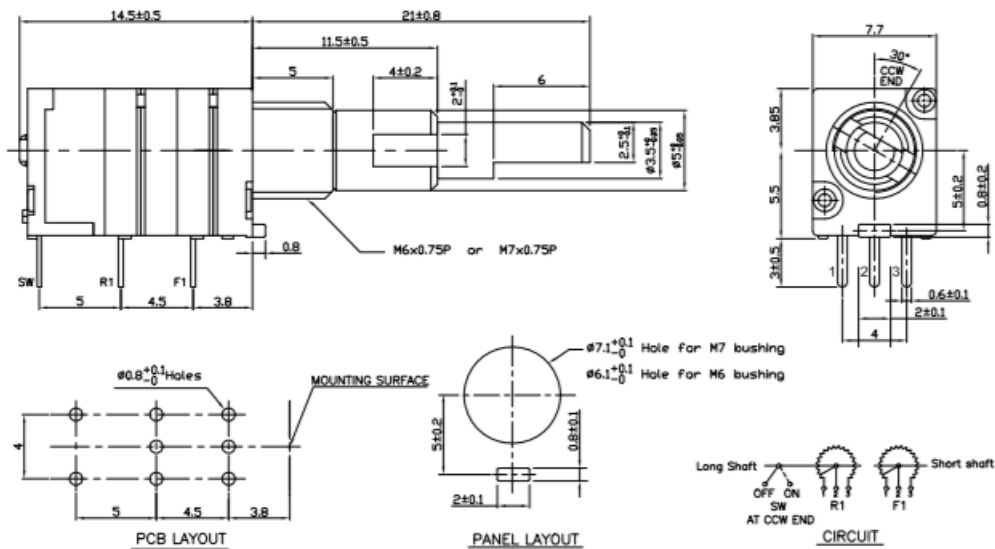
Panel Potentiometer

Model P08x Series

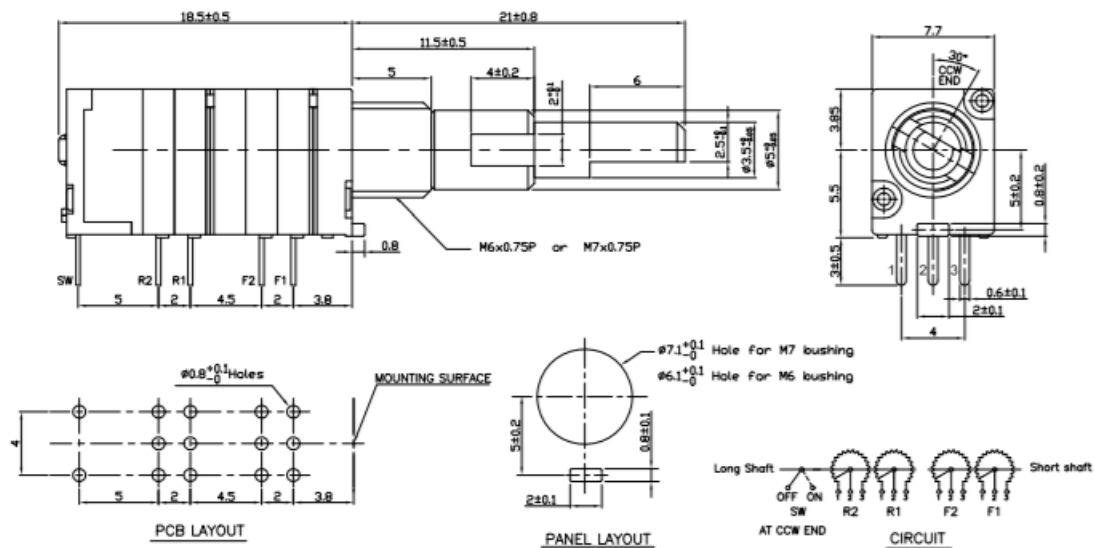


P08xE - POTENTIOMETER WITH DUAL SHAFT AND ROTARY SWITCH MODULE

2 GANG



4 GANG



General Note

TT Electronics reserves the right to make changes in product specification without notice or liability. All information is subject to TT Electronics' own data and is considered accurate at time of going to print.

Mouser Electronics

Authorized Distributor

Click to View Pricing, Inventory, Delivery & Lifecycle Information:

TT Electronics:

[P081N-271F2CBR10K](#) [P081S-71F2CAR10K](#) [P082D-27CBR10K](#) [P081N-061F2BBR100K](#) [P081N-061F2ABR100K](#)
[P081N-061F2BAR10K](#) [P081N-061F2AAR100K](#) [P081S-71S2CAR10K](#) [P084E-7CBR10K](#) [P082S-61F1DBR10K](#)
[P084D-071S3CCR10K](#) [P082N-261F1DBR10K](#) [P084N-061F2DAR50K](#) [P083N-071S1CBR1K](#) [P082E-6CAR50K](#)
[P082D-16CAR50K](#) [P082N-161F4CBR100K](#) [P081N-261F2BBR10K](#) [P081N-271F2CAR10K](#) [P084N-061F1CAR10K](#)
[P082S-61F4CAR50K](#) [P081N-071S3CBR10K](#) [P082N-271F2CBR10K](#) [P081NS-71F2CAR10K](#) [P082N-071F2CAR100K](#)
[P082N-261F2BCR100K](#) [P081N061F2ACR100K](#) [P082N-061F2BCR100K](#) [P081S-61F3DBR100K](#) [P081S-](#)
[61F3DBR10K](#)