

# Panel Potentiometer

## Model P09x Series



### Features:

- 9 mm rotary
- Multi-ganged
- 100,000 cycle life
- Metal shaft / bushing
- Switch / push-lock option
- Concentric shaft option
- Center tap option



### Model Styles Available

Side Adjust, PCB pins, up to 8 gangs	P09xN
Side Adjust, PCB pins, up to 8 gangs, with Switch	P09xS
Top Adjust, PCB pins, up to 2 gangs	P09x5N
Side Adjust, PCB pins, with Push-Lock, up to 2 gangs	P09xP
PCB pins, with Concentric Shaft	P09xC
PCB pins, with Center Tap	P09xT

### Electrical

Resistance Range, Ohms	1K-500K
Standard Resistance Tolerance	± 20%
Residual Resistance	20 ohms max.
Input Voltage, maximum	50 Vac max.
Power rating, Watts	Taper B: 0.05W Other Tapers: .025W
Dielectric Strength	300Vac, 1 minute
Insulation Resistance, Minimum	100M ohms at 250Vdc
Sliding Noise	100mV max.
Gang Error ( Multi-ganged )	-40dB – 0dB, ±3dB
Switch Contact Resistance	< 100 milliohms
Switch Power Rated	3.0A at 16Vdc

### Mechanical

Total Mechanical Travel	300°± 10°
Static Stop Strength	50 oz-in
Rotational Torque	0.5 to 1.25 oz-in
Switch Rotational Angle, Maximum	50°

#### General Note

TT Electronics reserves the right to make changes in product specification without notice or liability. All information is subject to TT Electronics' own data and is considered accurate at time of going to print.

TT Electronics | BI Technologies

4200 Bonita Place, Fullerton, CA USA 92835 | Ph: +1 714 447 2345  
www.ttelectronics.com | sensors@ttelectronics.com

# Panel Potentiometer

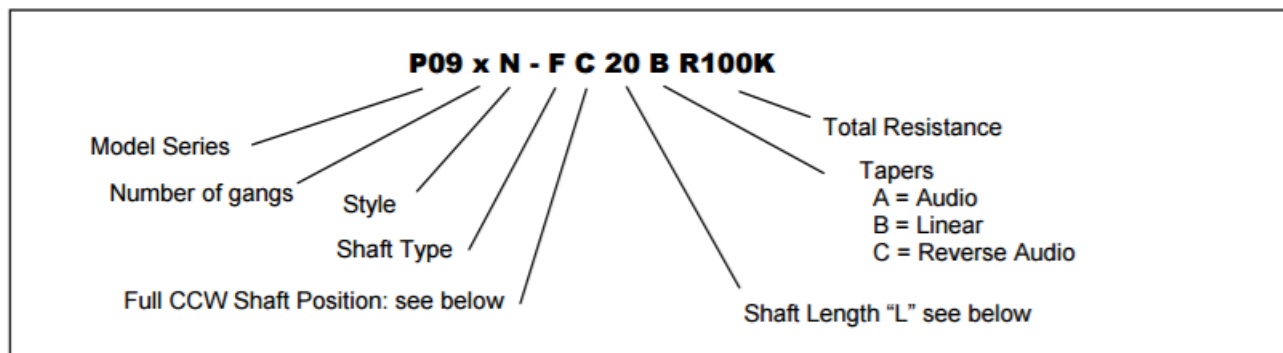
## Model P09x Series



### Environmental

Operating Temperature Range	-40°C to +85°C
Rotational Life	100,000 cycles

### Ordering



#### Shaft Types (P09xN, P09xS, P09x5N)

E-TYPE						F-TYPE						Q-TYPE					
L	10	15	20	25	30	L	10	15	20	25	30	L	10	15	20	25	30
T						T	4	7	12	12	12	T	4	6	12	12	12

#### Shaft Types for Push-Lock ( P09xP)

E-TYPE					F-TYPE					Q-TYPE				
L	25	30	35		L	25	30	35		L	25	30	35	
M	5.7	10.7	15.7		T	4.5	7	12		T	3	6	12	
					M	5.7	10.7	15.7		M	5.7	10.7	15.7	

#### General Note

TT Electronics reserves the right to make changes in product specification without notice or liability. All information is subject to TT Electronics' own data and is considered accurate at time of going to print.

TT Electronics | BI Technologies  
4200 Bonita Place, Fullerton, CA USA 92835 | Ph: +1 714 447 2345  
www.ttelectronics.com | sensors@ttelectronics.com

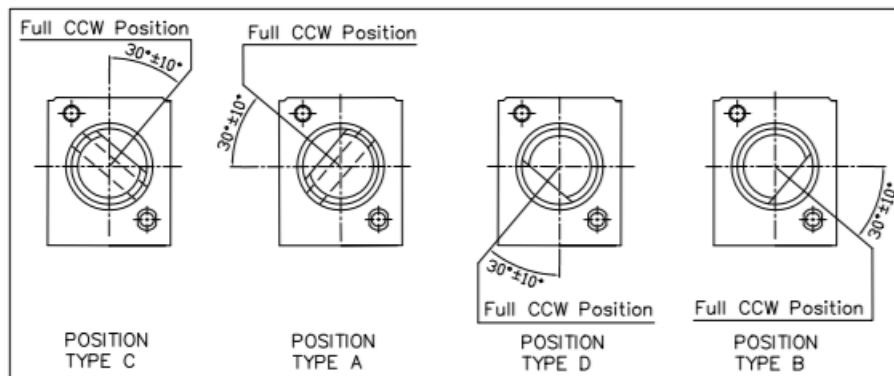
# Panel Potentiometer

## Model P09x Series



### Shaft Position (F-Type Shaft)

Dashed lines on Type "C" and Type "A" shows position of adjustment slot for E-Type and Q-Type shafts

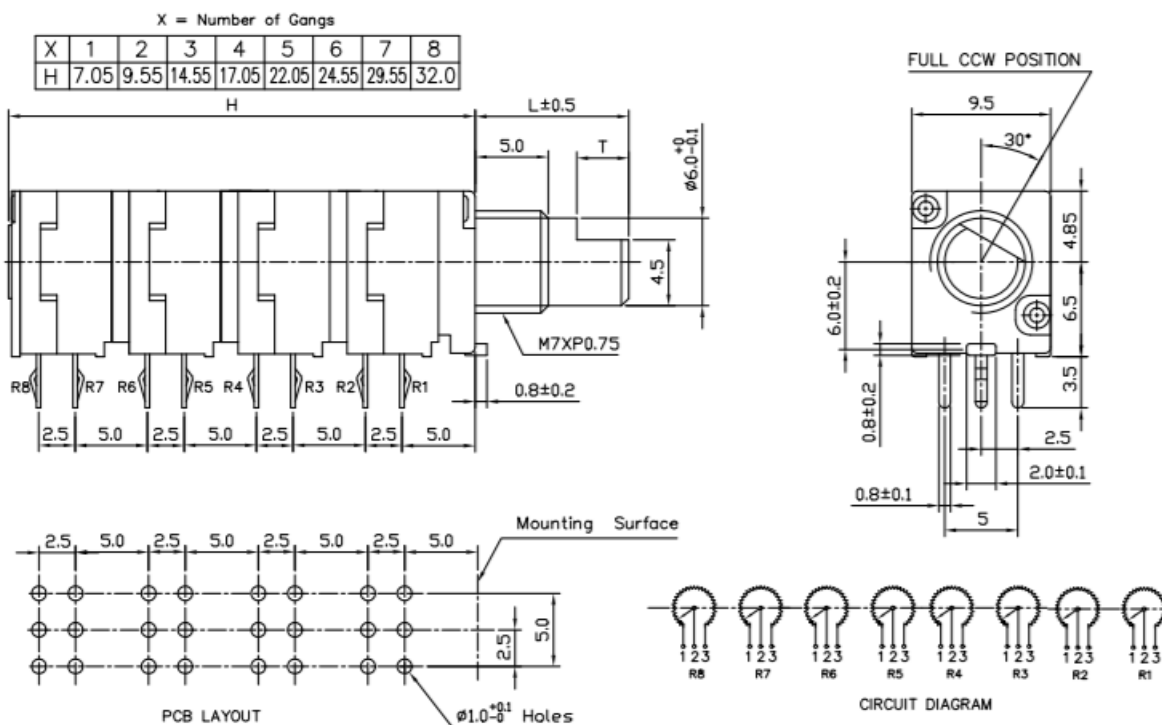


### STANDARD RESISTANCE VALUES, OHMS

1K 2K 5K 10K 20K 50K 100K 200K 500K

### Outline Drawings

#### Model P09xN (Side Adjust, PCB pins, up to 8 gangs)



#### General Note

TT Electronics reserves the right to make changes in product specification without notice or liability. All information is subject to TT Electronics' own data and is considered accurate at time of going to print.

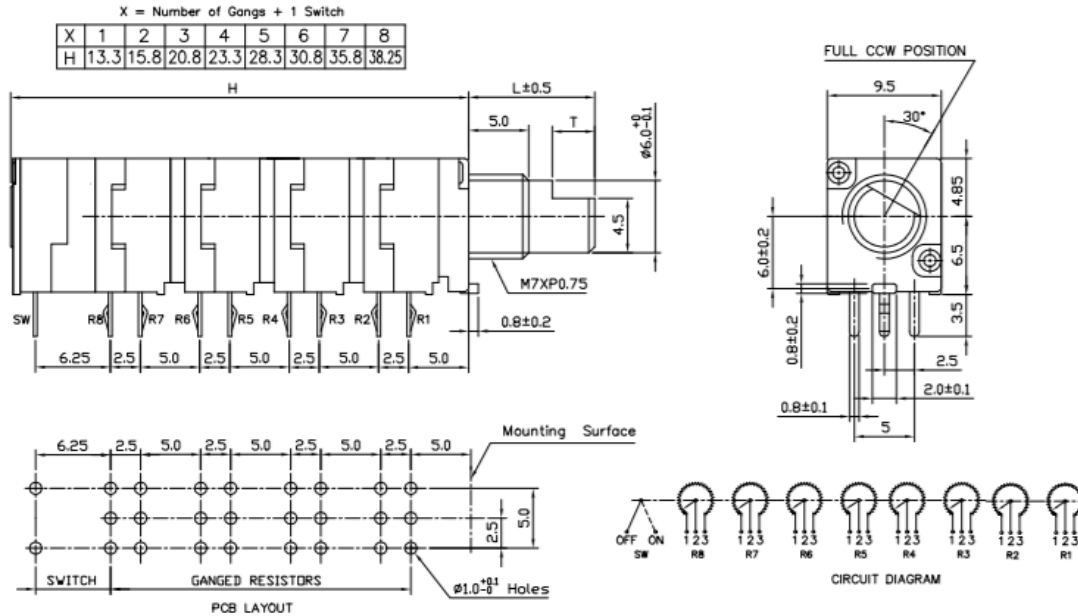
# Panel Potentiometer

## Model P09x Series

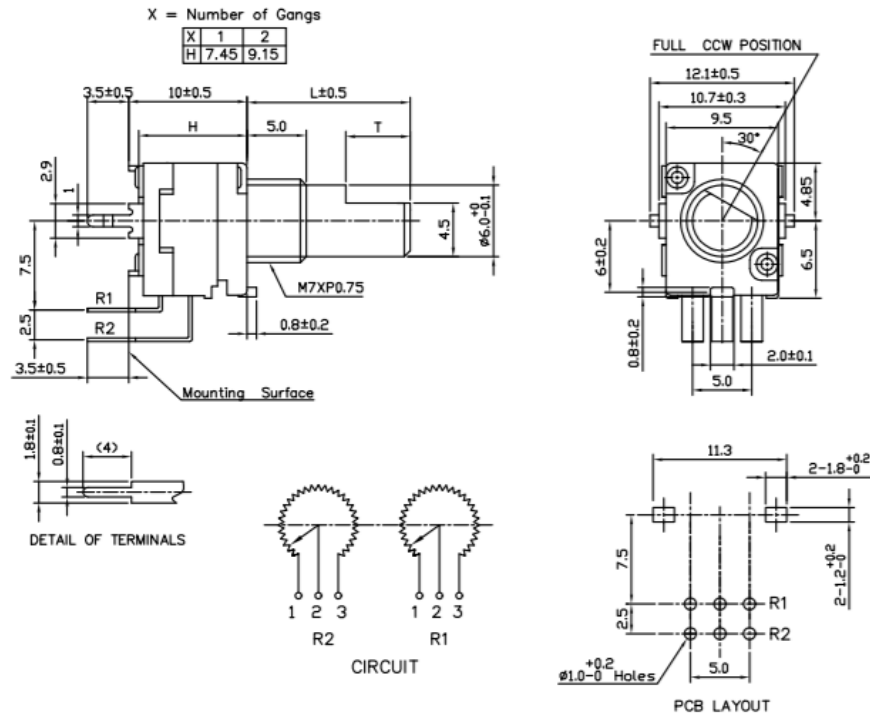


### Outline Drawings

#### Model P09xS (Side Adjust, PCB pins, up to 8 gangs, with Switch)



#### Model P09x5N (Top Adjust, PCB pins, up to 2 gangs)



#### General Note

TT Electronics reserves the right to make changes in product specification without notice or liability. All information is subject to TT Electronics' own data and is considered accurate at time of going to print.

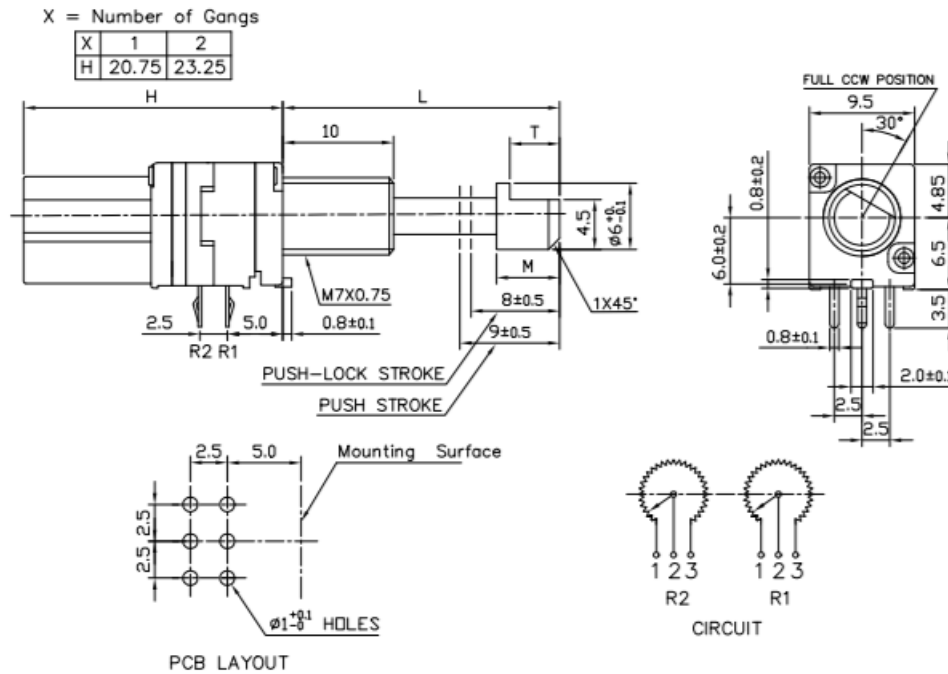
# Panel Potentiometer

## Model P09x Series



### Outline Drawings

#### Model P09xP (Side Adjust, PCB pins, with Push-Lock, up to 2 gangs)



#### General Note

TT Electronics reserves the right to make changes in product specification without notice or liability. All information is subject to TT Electronics' own data and is considered accurate at time of going to print.

## Model P09x Series

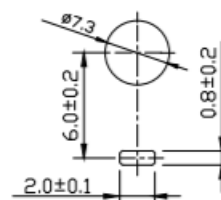
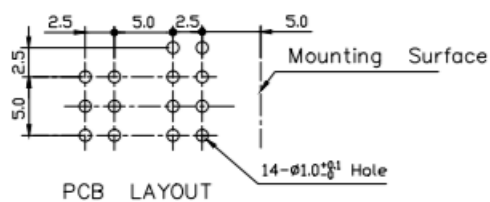
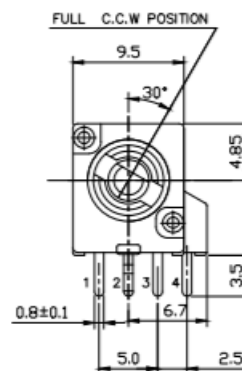
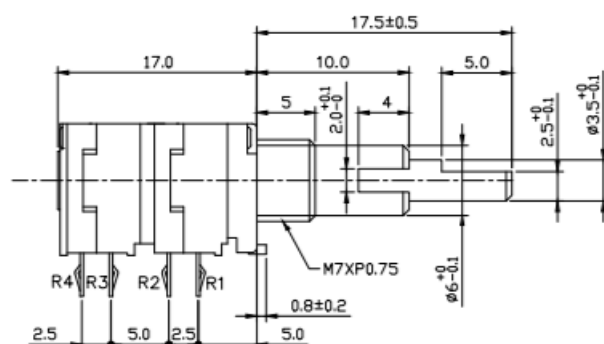


## Outline Drawings

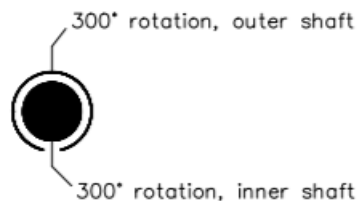
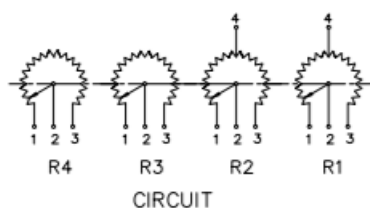
### Model P09xC and P09xT (PCB pins with Concentric Shaft and Center Tap Options)

**This Diagram shows both options**

**Please consult factory for details**



## PANEL LAYOUT



### General Note

TT Electronics reserves the right to make changes in product specification without notice or liability. All information is subject to TT Electronics' own data and is considered accurate at time of going to print.

© TT electronics plc

TT Electronics | BI Technologies  
4200 Bonita Place, Fullerton, CA USA 92835 | Ph: +1 714 447 2345  
[www.ttelectronics.com](http://www.ttelectronics.com) | [sensors@ttelectronics.com](mailto:sensors@ttelectronics.com)

# Mouser Electronics

Authorized Distributor

Click to View Pricing, Inventory, Delivery & Lifecycle Information:

## TT Electronics:

[P092N-QC20AR100K](#) [P092N-QC20BR100K](#) [P091P-EA25BR100K](#) [P092N-QC20AR20K](#) [P092N-QD15AR10K](#)  
[P091S-EC20BR50K](#) [P092N-QC20BR20K](#) [P091P-FA25BR100K](#) [P092N-QC20AR10K](#) [P091P-QA25BR100K](#) [P092N-](#)  
[FC20AR20K](#) [P091N-FC25BR5K](#) [P091N-QC25BR50K](#) [P091P-FC25BR10K](#) [P091S-FC20BR10K](#) [P091S-QC15BR50K](#)  
[P0915N-QC20BR5K](#) [P092N-QC15AR20K](#) [P0915N-FC20BR10K](#) [P0915N-FC20BR5K](#) [P0915N-EC15BR2K](#) [P0915N-](#)  
[EC15BR100K](#) [P0915N-EC15BR10K](#) [P091P-FC25CR50K](#) [P0915N-FC15AR10K](#) [P0915N-FC15BR50K](#) [P0915N-](#)  
[FC20BR50K](#) [P091P-FC25AR50K](#) [P091P-FC30AR50K](#) [P0925N-FC15AR10K](#) [P0925N-FC15BR50K](#) [P0925N-](#)  
[FD15BR50K](#) [P092N-EC15BR20K](#) [P092N-FC20B500K](#) [P092P-FC20AR5K](#) [P092P-FC25AR50K](#) [P092P-FC25AR5K](#)  
[P092P-FC30AR50K](#) [P092S-QC25AR10K](#) [P0915NFC15-AR500K](#) [P0915NFC15-BR25K](#) [P0915N-FC15AR50K](#)  
[P0915N-FC15BR10K](#) [P0925N-FC15CR500K](#) [P0915N-QC15BR100k](#) [P091N-FC25BR10K](#) [P091S-FC15BR10K](#)  
[P0915N-QC15AR10K](#) [P0915N-EC15BR50K](#) [P092N-FC25BR10K](#) [P092S-FC15AR10K](#) [P092N-QC15AR5K](#) [P091N-](#)  
[FC25BR1K](#) [P092N-FA15CR50K](#) [P092P-FC25AR100K](#) [P092N-FC25CR100K](#) [P0925N-FC15BR20K](#) [P091N-](#)  
[FC25AR500K](#) [P091N-FC25AR10K](#) [P091N-FC25A500K](#) [P092N-FC15AR50K](#) [P0915N-QC20BR50K](#) [P092N-](#)  
[QC15BR10K](#) [P092N-FC25AR20K](#) [P091N-QC15BR100K](#) [P092N-QC15BR100K](#) [P091N-FA15BR10K](#) [P092N-](#)  
[FC25AR100K](#) [P092N-FC15BR10K](#) [P091P-FC25CR2K](#) [P0915N-QC15AR100K](#) [P0925N-FC20AR100K](#) [P091N-](#)  
[FC15AR10K](#) [P092N-FC15AR100K](#) [P091N-FC25BR100K](#) [P092P-FC20AR100K](#) [P091N-FC20BR5K](#) [P092N-](#)  
[FC25BR100K](#) [P092N-FC15AR500K](#) [P0915N-QC15AR500K](#) [P091N-QC20BR50K](#) [P092N-FC15CR20K](#) [P094N-](#)  
[FC15AR50K](#) [P091N-FA20BR10K](#) [P0915N-QC15BR5K](#) [P092N-FC15BR20K](#) [P091S-FC20BR5K](#) [P092N-FA20CR50K](#)  
[P0925N-FA15AR100K](#) [P0925N-FC15AR5K](#) [P0915N-QC15AR50K](#) [P091N-QC15BR10K](#) [P092S-QC15BR50K](#)  
[P0925N-FA15AR200K](#) [P091N-FC25CR10K](#) [P094N-QD15AR20K](#) [P0915N-QC15BR50K](#) [P092N-FC25AR10K](#) [P092N-](#)  
[FC25BR20K](#) [P091P-FC25CR5K](#)