

# NGTD30T120F2

## IGBT Die

Trench Field Stop II IGBT Die for motor drive and inverter applications.

### Features

- Extremely Efficient Trench with Field Stop Technology
- Low  $V_{CE(sat)}$  Loss Reduces System Power Dissipation

### Typical Applications

- Industrial Motor Drives
- Solar Inverters
- UPS Systems
- Welding

### MAXIMUM RATINGS

Parameter	Symbol	Value	Unit
Collector-Emitter Voltage, $T_J = 25^\circ\text{C}$	$V_{CE}$	1200	V
DC Collector Current, limited by $T_{J(max)}$	$I_C$	(Note 1)	A
Pulsed Collector Current (Note 2)	$I_{C, pulse}$	200	A
Gate-Emitter Voltage	$V_{GE}$	$\pm 20$	V
Maximum Junction Temperature	$T_J$	$-55$ to $+175$	$^\circ\text{C}$
Short Circuit Withstand Time, $V_{GE} = 15\text{ V}$ , $V_{CE} = 500\text{ V}$ , $T_J \leq 150^\circ\text{C}$	$T_{SC}$	10	$\mu\text{s}$

Stresses exceeding those listed in the Maximum Ratings table may damage the device. If any of these limits are exceeded, device functionality should not be assumed, damage may occur and reliability may be affected.

1. Depending on thermal properties of assembly.
2.  $T_{pulse}$  limited by  $T_{Jmax}$ , 10  $\mu\text{s}$  pulse,  $V_{GE} = 15\text{ V}$ .

### MECHANICAL DATA

Parameter	Value	Unit
Die Size	6241 x 4741	$\mu\text{m}^2$
Emitter Pad Size	See die layout	$\mu\text{m}^2$
Gate Pad Size	410 x 680	$\mu\text{m}^2$
Die Thickness	5	mils
Wafer Size	150	mm
Top Metal	5 $\mu\text{m}$ AlSi	
Back Metal	2 $\mu\text{m}$ TiNiAg	
Max possible chips per wafer	415	
Passivation frontside	Oxide-Nitride	
Reject ink dot size	25 mils	
Recommended storage environment: In original container, in dry nitrogen, or temperature of $18-28^\circ\text{C}$ , 30-65%RH	Type: Bare Wafer in Jar Storage time: < 36 months	Type: Die on tape in ring-pack Storage time: < 3 months

### ORDERING INFORMATION

Device	Inking?	Shipping
NGTD30T120F2WP	Yes	Bare Wafer in Jar
NGTD30T120F2SWK	Yes	Sawn Wafer on Tape

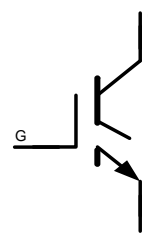


ON Semiconductor®

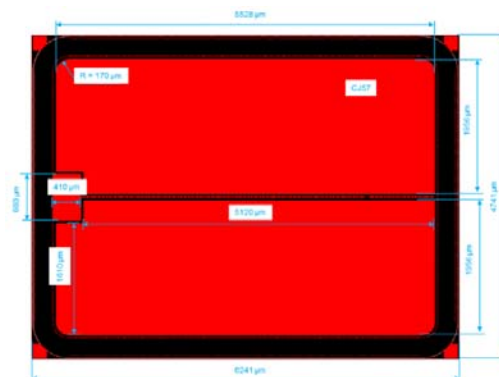
[www.onsemi.com](http://www.onsemi.com)

$V_{RCE} = 1200\text{ V}$   
 $I_C = \text{Limited by } T_{J(max)}$

IGBT DIE



DIE OUTLINE



# NGTD30T120F2

## ELECTRICAL CHARACTERISTICS ( $T_J = 25^\circ\text{C}$ , unless otherwise specified)

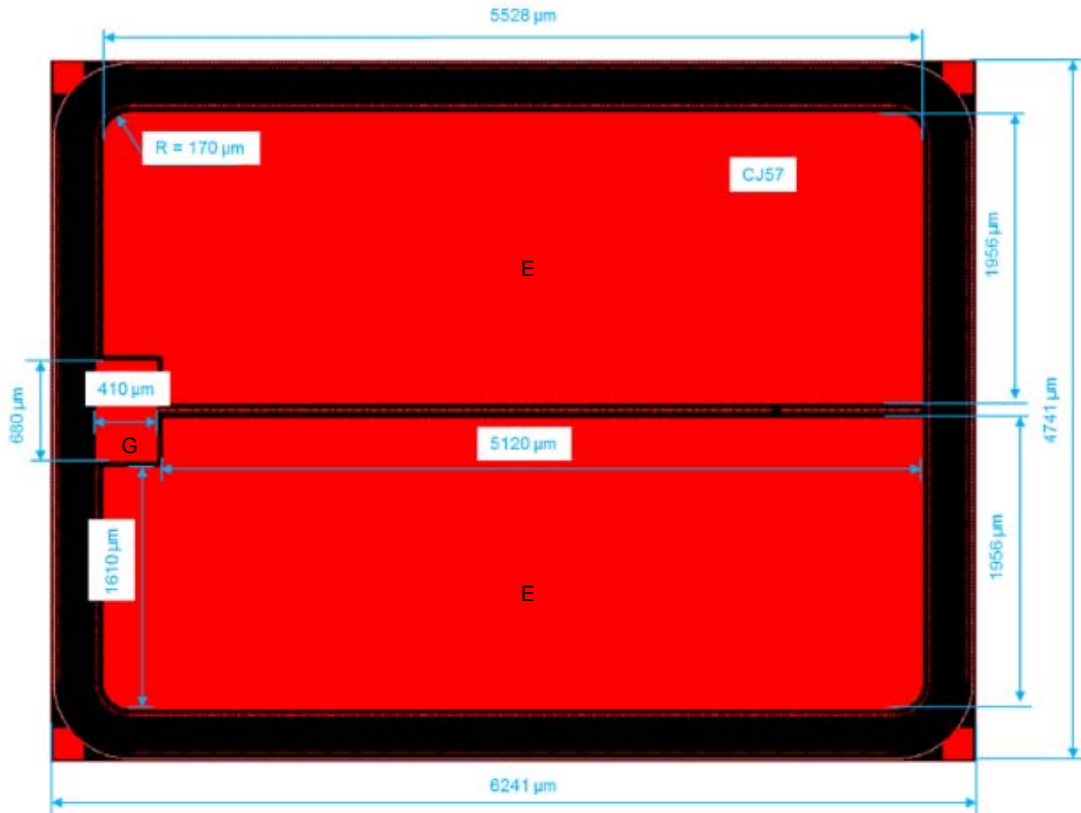
Parameter	Test Conditions	Symbol	Min	Typ	Max	Units
<b>STATIC CHARACTERISTICS</b>						
Collector-Emitter Breakdown Voltage	$V_{GE} = 0\text{ V}, I_C = 500\text{ }\mu\text{A}$	$V_{(BR)CES}$	1200			V
Collector-Emitter Saturation Voltage	$V_{GE} = 15\text{ V}, I_C = 40\text{ A}$	$V_{CE(sat)}$		2.0	2.4	V
Gate-Emitter Threshold Voltage	$V_{GE} = V_{CE}, I_C = 400\text{ }\mu\text{A}$	$V_{GE(TH)}$	4.5	5.5	6.5	V
Collector-Emitter Cutoff Current	$V_{GE} = 0\text{ V}, V_{CE} = 1200\text{ V}$	$I_{CES}$			0.4	mA
Gate Leakage Current	$V_{GE} = 20\text{ V}, V_{CE} = 0\text{ V}$	$I_{GES}$			200	nA

## DYNAMIC CHARACTERISTICS

Input Capacitance	$V_{CE} = 20\text{ V}, V_{GE} = 0\text{ V}, f = 1\text{ MHz}$	$C_{ies}$		7385		pF
Output Capacitance		$C_{oes}$		230		pF
Reverse Transfer Capacitance		$C_{res}$		140		pF

Product parametric performance is indicated in the Electrical Characteristics for the listed test conditions, unless otherwise noted. Product performance may not be indicated by the Electrical Characteristics if operated under different conditions.

## DIE LAYOUT




E = Emitter pad  
G = Gate pad  
All dimensions in  $\mu\text{m}$

# NGTD30T120F2

## Further Electrical Characteristic

Switching characteristics and thermal properties are depending strongly on module design and mounting technology and can therefore not be specified for a bare die.

ON Semiconductor and the  are registered trademarks of Semiconductor Components Industries, LLC (SCILLC) or its subsidiaries in the United States and/or other countries. SCILLC owns the rights to a number of patents, trademarks, copyrights, trade secrets, and other intellectual property. A listing of SCILLC's product/patent coverage may be accessed at [www.onsemi.com/site/pdf/Patent-Marking.pdf](http://www.onsemi.com/site/pdf/Patent-Marking.pdf). SCILLC reserves the right to make changes without further notice to any products herein. SCILLC makes no warranty, representation or guarantee regarding the suitability of its products for any particular purpose, nor does SCILLC assume any liability arising out of the application or use of any product or circuit, and specifically disclaims any and all liability, including without limitation special, consequential or incidental damages. "Typical" parameters which may be provided in SCILLC data sheets and/or specifications can and do vary in different applications and actual performance may vary over time. All operating parameters, including "Typicals" must be validated for each customer application by customer's technical experts. SCILLC does not convey any license under its patent rights nor the rights of others. SCILLC products are not designed, intended, or authorized for use as components in systems intended for surgical implant into the body, or other applications intended to support or sustain life, or for any other application in which the failure of the SCILLC product could create a situation where personal injury or death may occur. Should Buyer purchase or use SCILLC products for any such unintended or unauthorized application, Buyer shall indemnify and hold SCILLC and its officers, employees, subsidiaries, affiliates, and distributors harmless against all claims, costs, damages, and expenses, and reasonable attorney fees arising out of, directly or indirectly, any claim of personal injury or death associated with such unintended or unauthorized use, even if such claim alleges that SCILLC was negligent regarding the design or manufacture of the part. SCILLC is an Equal Opportunity/Affirmative Action Employer. This literature is subject to all applicable copyright laws and is not for resale in any manner.

## PUBLICATION ORDERING INFORMATION

### LITERATURE FULFILLMENT:

Literature Distribution Center for ON Semiconductor  
P.O. Box 5163, Denver, Colorado 80217 USA  
**Phone:** 303-675-2175 or 800-344-3860 Toll Free USA/Canada  
**Fax:** 303-675-2176 or 800-344-3867 Toll Free USA/Canada  
**Email:** [orderlit@onsemi.com](mailto:orderlit@onsemi.com)

**N. American Technical Support:** 800-282-9855 Toll Free  
USA/Canada  
**Europe, Middle East and Africa Technical Support:**  
Phone: 421 33 790 2910  
**Japan Customer Focus Center**  
Phone: 81-3-5817-1050

**ON Semiconductor Website:** [www.onsemi.com](http://www.onsemi.com)

**Order Literature:** <http://www.onsemi.com/orderlit>

For additional information, please contact your local Sales Representative