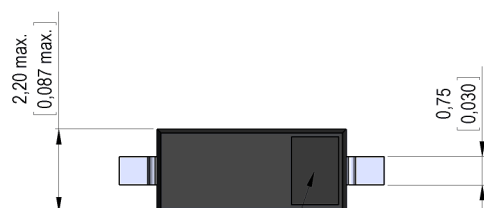
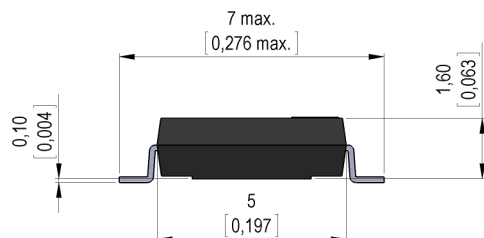
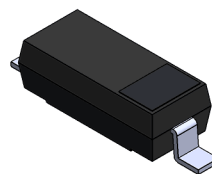
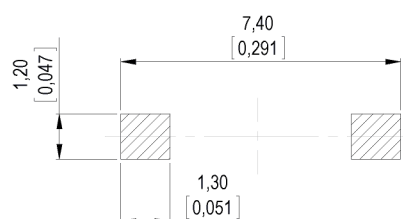


**Dimensions mm[inch]**

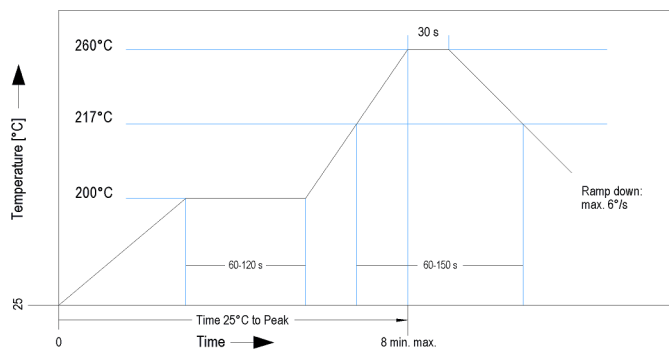
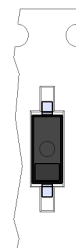
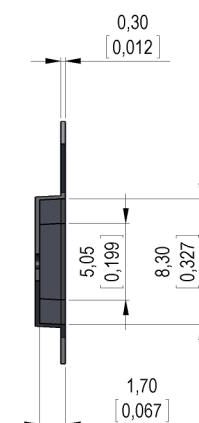
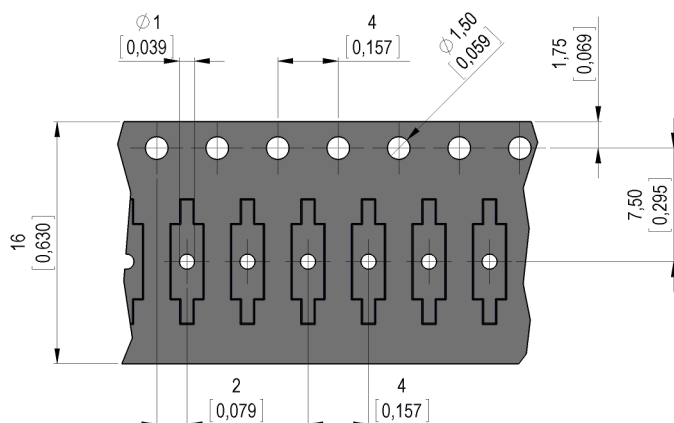
 tolerances according to DIN ISO 2768-m  
 Toleranzen gem. DIN ISO 2768-m


gap position

**Isometric**

 Scale 5:1  
 Maßstab 5:1

**Recommended PCB Pad Layout**

**Solder Reflow Profile**

reflow soldering conditions according to JEDEC norm J-STD 020D.1


**Packaging**


Gap position opposite to the sprocket holes.



*Products for tomorrow...*

Europe: +49 / 7731 8399 0

| Email: info@meder.com

Item No.:

USA: +1 / 508 295 0771

| Email: salesusa@meder.com

**9240000021**

Asia: +852 / 2955 1682

| Email: salesasia@meder.com

Item:

**MK24-B-2**

Magnetic properties	Conditions	Min	Typ	Max	Unit
Pull-In excitation (modified contact)	Reed switch modified phys. conditioned tolerance of +/- 1 AT	37		71	AT
Test equipment	Testing 100%	KMS11+AP74			
Pull-In in milliTesla (modified conta	MS150 - phys. caused tolerance +/- 0,1mT	3		5,8	mT

Contact data 04	Conditions	Min	Typ	Max	Unit
Contact rating ( > 9 AT )	Any DC combination of V & A not to exceed their individual max.'s			3	W
Switching voltage	DC or Peak AC			30	V
Switching current ( > 9 AT )	DC or Peak AC			0,3	A
Carry current ( > 9 AT )	DC or Peak AC			0,5	A
Contact resistance static (>9AT )	Measured with 40% overdrive Start value			200	mOhm
Insulation resistance	RH <45 %, 100 V test voltage	10			GOhm
Breakdown voltage ( > 9 AT )	according to IEC 255-5	100			VDC
Operate time incl. bounce ( > 9 AT )				0,2	ms
Release time	measured with no coil excitation			0,15	ms
Capacity	@ 10 kHz across open switch		0,1		pF

Special Product Data	Conditions	Min	Typ	Max	Unit
Reach / RoHS conformity			yes		

Environmental data	Conditions	Min	Typ	Max	Unit
Shock	1/2 sine, duration 11ms, in 3 axis			30	g
Vibration	from 10 - 2000 Hz			20	g
Operating temperature		-40		115	°C
Storage temperature		-55		115	°C
Soldering Temperature Tsold	Reflow according IPC/JEDEC J-STD-020C			260	°C
Washability		fully sealed			

General data	Conditions	Min	Typ	Max	Unit
Remark		Pick & place force should not exceed 25cN!			
Packaging		Tape & Reel per 2000 pcs. / Tray H20			

Modifications in the sense of technical progress are reserved

Designed at: 01.07.09 Designed by: THAUKE

Approval at: 03.11.09 Approval by: JHEYDER

Last Change at: 12.07.12 Last Change by: THAUKE

Approval at: 23.07.12 Approval by: AWEBER

Version: 7

# Mouser Electronics

Authorized Distributor

Click to View Pricing, Inventory, Delivery & Lifecycle Information:

[Standex Electronics:](#)

[MK24-B-2](#)