

REVISION Y

DO NOT
SCALE FROM
THIS PRINT

No. Of POS	"C"
-019	.950 [24.13]
-038	1.450 [36.83]
-057	1.950 [49.53]
-076	2.450 [62.23]
-095	2.950 [74.93]
-114	3.450 [87.63]
-133	3.950 [100.33]

No OF POSITIONS	COPLANARITY
-019, 038, -057, -076	.004[0.10]
-095, -114, -133	.006[0.15]

MIT-XXX-XX-X-D-XX

No OF POSITIONS —
-019, -038, -057, -076,
**-095, **-114, **-133
(PER ROW)
(** = SEE NOTE 11)

- OPTION
 -K: POLYAMIDE FILM PAD
 (USE K-DOT-.276-.375-.005, SEE FIG 3, SHT 2)
 -TR: TAPE & REEL (076 POS MAX)
 (N/A ON STYLE -.05, -.06, -.07 & -.08)

LEAD STYLE

```
-01: .1680[4.267]
-02: .2861[7.267]
-03: .4042[10.267]
-04: .6000[15.240]
-05: .7080[17.983]
-06: .8350[21.209]
```

- ROW SPECIFICATION

-D: DOUBLE (USE MIT-19-XX-D-XX
& MITH-19-XX-D-XX)

No OF BANKS

PLATING SPECIFICATION

-F: 3µ" FLASH SELECTIVE GOLD IN CONTACT AREA,
MATTE TIN ON TAIL
(USE T-1SXX-XX-F & T-1G5-XX-F) (SEE NOTE 10)

-L: 10µ" LIGHT SELECTIVE GOLD IN CONTACT AREA,
MATTE TIN ON TAIL
(USE T-1SXX-XX-L & T-1G5-XX-L)

-H: 30µ" HEAVY GOLD IN CONTACT AREA, 3µ" GOLD ON TAIL
(USE T-1SXX-XX-H & T-1G5-XX-L)

-C: 50µ" ELECTRO-POLISHED SELECTIVE GOLD IN CONTACT AREA,
MATTE TIN ON TAIL (USE T-1SXX-XX-C & T-1G5-XX-L)

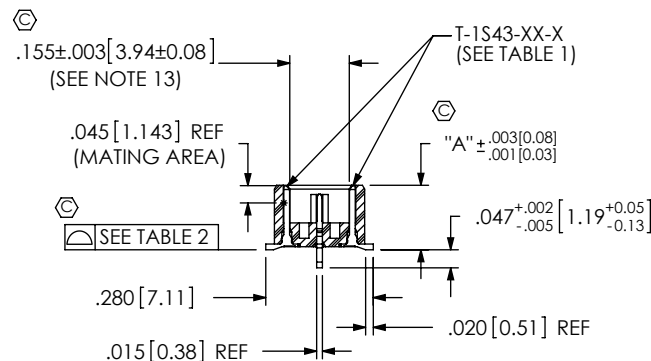
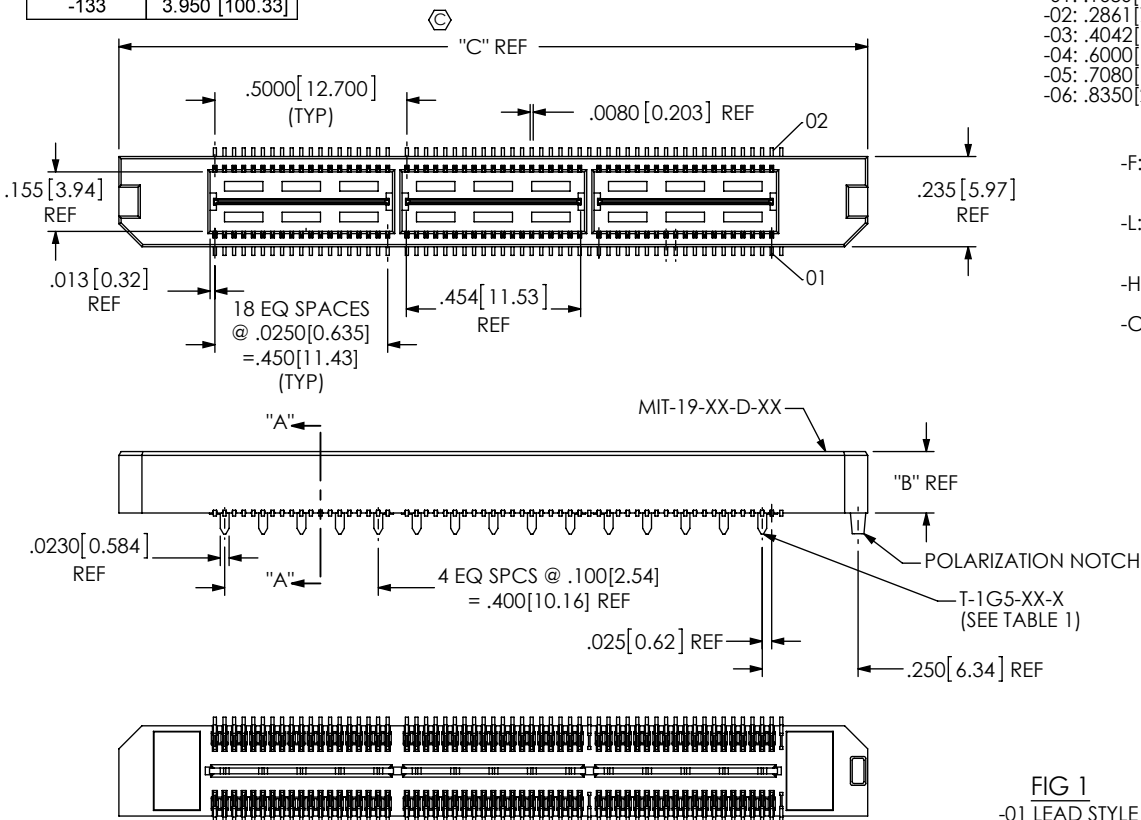


FIG 1
-01 LEAD STYLE
(MIT-057-01-X-D SHOWN)
(STYLE -01 & -02 ONLY)

SECTION "A"- "A"

TABLE 1								MATED HEIGHT WITH MIS-01
STYLE	"A"	"B"	"D"	BODY	TERMINAL	GROUND PLANE	SPACER	
-01	.1680[4.267]	.1600[4.064]	N/A	MIT-19-01-D-XX	T-1S43-01-X	T-1G5-01-X	N/A	.198[5.03] REF
-02	.2861[7.267]	.2781[7.064]	N/A	MIT-19-02-D-XX	T-1S43-02-X	T-1G5-02-X	N/A	.316[8.03] REF
-03	.4042[10.267]	.3962[10.063]	0.1180[2.997]	MIT-19-02-D-XX	T-1S50-03-X	T-1G5-03-X	MITH-19-01-D-XX	.434[11.02] REF
-04	.6000[15.240]	.5920[15.037]	0.1180[2.997]	MIT-19-02-D-XX	T-1S50-04-X	T-1G5-04-X	MITH-19-01-D-XX	.630[16.00] REF
-05	.7080[17.983]	.7000[17.780]	0.2780[7.061]	MIT-19-02-D-XX	T-1S50-05-X	T-1G5-05-X	MITH-19-02-D-XX	.738[18.75] REF
-06	.8350[21.209]	.8270[21.006]	0.2780[7.061]	MIT-19-02-D-XX	T-1S50-06-X	T-1G5-06-X	MITH-19-02-D-XX	.866[22.00] REF

UNLESS OTHERWISE SPECIFIED,
DIMENSIONS ARE IN INCHES.
TOLERANCES ARE:

DECIMALS	ANGLES
.XX: $\pm 0.01[.3]$	$\pm 2^\circ$
.XXX: $\pm .005[.13]$	
.XXXX: $\pm .0020[.051]$	

PROPRIETARY NOTE
THIS DOCUMENT CONTAINS INFORMATION
CONFIDENTIAL AND PROPRIETARY TO
SAMTEC, INC. AND SHALL NOT BE REPRODUCED
OR TRANSFERRED TO OTHER DOCUMENTS OR
DISCLOSED TO OTHERS OR USED FOR ANY
PURPOSE OTHER THAN THAT WHICH IT WAS
OBTAINED WITHOUT THE EXPRESSED WRITTEN
CONSENT OF SAMTEC, INC.

samtec
520 PARK EAST BLVD, NEW ALBANY, IN 47131
PHONE: 812-944-6733 FAX: 812-948-5041
e-Mail: info@SAMTEC.com code: 553

MATERIAL: DO NOT SCALE DRAWING

INSULATOR: LCP, UL94V-0; COLOR: BLACK
TERMINAL: PHOS BRONZE
GROUND PLANE: PHOS BRONZE



SHEET SCALE: 2:1

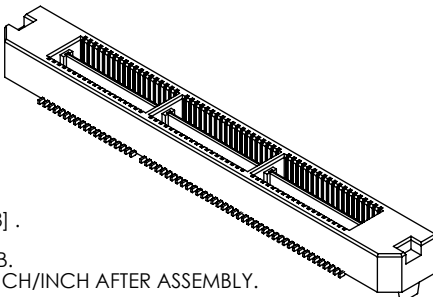
DESCRIPTION:	635mm DOUBLE ROW HS TERMINAL ASSEMBLY
--------------	---------------------------------------

DWG. NO. MIT-XXX-XX-X-D-XX

BY: DEAN P	7/7/1999	SHEET 1 OF 2
------------	----------	--------------

NOTES:

- 
1.  REPRESENTS A CRITICAL DIMENSION.
 2. COPLANARITY: SEE TABLE 2.
 3. MAXIMUM BURR ALLOWANCE: .0015[0.038] .
 4. MINIMUM TERMINAL RETENTION: 8 OZ.
 5. MINIMUM GROUND PLANE RETENTION: 1 LB.
 6. MAXIMUM ALLOWABLE BOW: .002[0.05] INCH/INCH AFTER ASSEMBLY.
 7. PARTS TO BE MOLDED TO POSITION.
 8. NOTE DELETED.
 9. NOTE DELETED.
 10. -L PLATING CAN BE SUBSTITUTED FOR -F PLATING,
-L PLATED GROUND PLANE CAN BE SUBSTITUTED FOR -F PLATED GROUND PLANE.
 11. APPLICATIONS REQUIRING THESE POSITIONS, PLEASE CONTACT
SAMTEC INTERCONNECT PROCESSING GROUP.
 12. PARTS TO BE PACKAGED IN TRAYS.
 13. PIN CAN EXTEND PAST WALL .003[0.08] MAX.



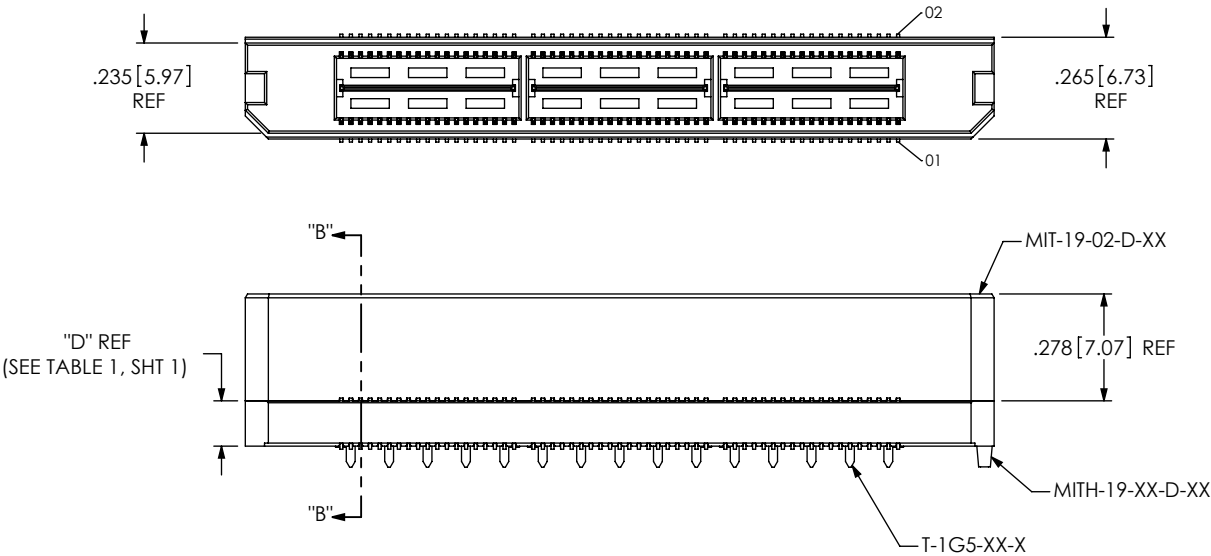
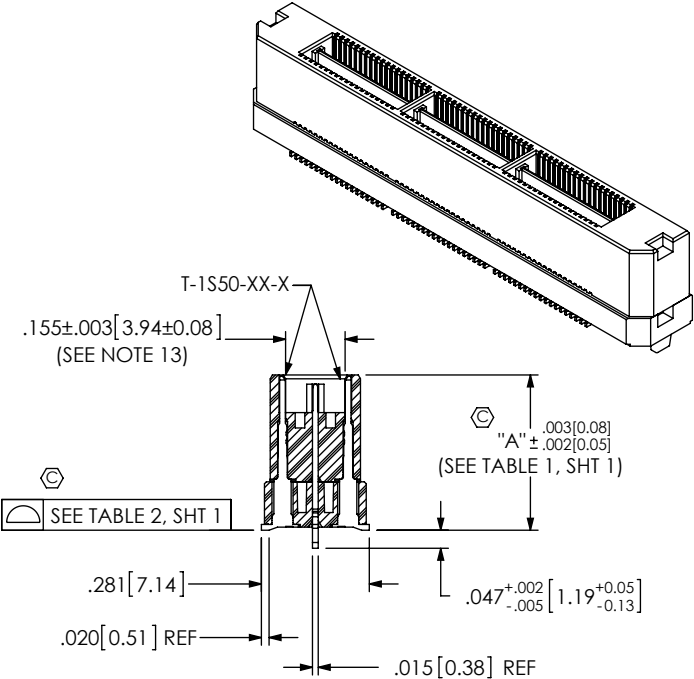


FIG 2
-03 LEAD STYLE
(MIT-057-03-X-D SHOWN)
(DIFFERENT AS SHOWN, OTHERWISE SAME AS FIG 1)
(STYLE -03, -04, -05, & -06)



SECTION "B"-"B"

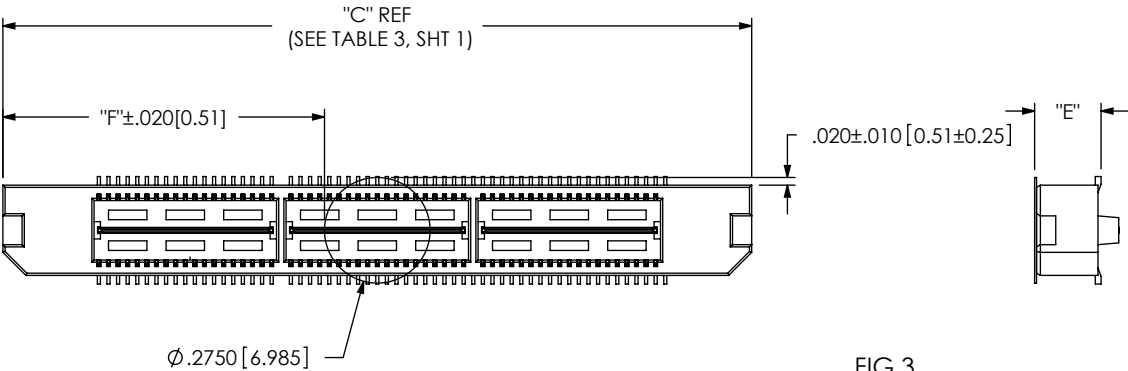


FIG 3
-K: POLYAMIDE FILM PAD OPTION

TABLE 4	
STYLE	"E"
-01	.173[4.39]
-02	.291[7.39]
-03	.409[10.39]
-04	.605[15.37]
-05	.713[18.11]
-06	.841[21.36]

TABLE 5	
No. OF POS	"F"
-019	.338 [8.57]
-038	.588 [14.92]
-057	.838 [21.27]
-076	1.088 [27.62]
-095	1.338 [33.97]
-114	1.588 [40.32]
-133	1.838 [46.67]

CRITICAL DIMENSION INSPECTION INSTRUCTION TABLE	
ASSEMBLY OPERATION	IN PROCESS INSPECTION
FILL T-1SXX	C1, C2, C3, C4, C5, C6
ADD -K OPTION	C7, C8

PROPRIETARY NOTE
THIS DOCUMENT CONTAINS INFORMATION
CONFIDENTIAL AND PROPRIETARY TO
SAMTEC, INC. AND SHALL NOT BE REPRODUCED
OR TRANSFERRED TO OTHER DOCUMENTS OR
DISCLOSED TO OTHERS OR USED FOR ANY
PURPOSE OTHER THAN THAT WHICH IT WAS
OBTAINED WITHOUT THE EXPRESSED WRITTEN
CONSENT OF SAMTEC, INC.

DO NOT SCALE DRAWING

SHEET SCALE: 2:1

samtec

520 PARK EAST BLVD, NEW ALBANY, IN 47150
PHONE: 812-944-6733 FAX: 812-948-5047
e-Mail: info@SAMTEC.com code: 55322

DESCRIPTION:
.635mm DOUBLE ROW HS TERMINAL ASSEMBLY

DWG. NO.
MIT-XXX-XX-X-D-XX

BY: DEAN P 7/7/1999 SHEET 2 OF 2