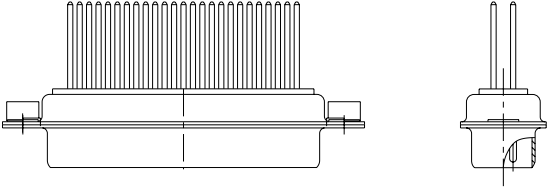





	1	2	3	4	5	6	7	8																																																																																																																														
A	<u>REFERENCE SPECIFICATIONS</u> -NFC 93425 (in compliance with HE 501)			Series ← DBML25P400					A																																																																																																																													
B	<u>PHYSICAL CHARACTERISTICS</u> -INSULATOR MATERIAL: THERMOPLASTIC UL94V0 -CONTACT MATERIAL: BRASS, GOLD OVER NICKEL			Shell size: E A B C D ← see sheet 2 Front accessory definition ← see sheet 2 Blank :without accessory F :floating mounting L :threaded insert M3 O :threaded insert UNC 4-40 V :female screw UNC 4-40					B																																																																																																																													
C	<u>ELECTRICAL CHARACTERISTICS</u> -NOMINAL CURRENT: 7.5A -CONTACT RESISTANCE: <= 7.3 m ohms -CONTACT/CONTACT : >=1000 V -CONTACT/GROUND : >=1200 V -INSULATION RESISTANCE: >=5000 MOhms			Contact number (see sheet 2) ← 9,15,25,37,50 Contacts ← P :Pin Termination type ← 4 3 level wire wrap contact Plating ← 00 : 500 matings/unmatings 43 : 500 matings/unmatings for harsh environment					C																																																																																																																													
D	<u>ENVIRONMENTAL CHARACTERISTICS</u> - CLIMATIC CATEGORY: 55/125/56 TEMPERATURE RANGE -55°C TO +125°C DAMP HEAT STEADY STATE 56 DAYS SALT SPRAY 48 HOURS								D																																																																																																																													
E	<u>MECHANICAL CHARACTERISTICS</u> - RETENTION AGAINST TORQUE: - Threaded insert: 0.7 N.m minimum - Female screw : 0.5 N.m minimum			 25 WAY for Example					E																																																																																																																													
F				<table><tr><td colspan="4">www.fciconnect.com</td><td>surface</td><td>-</td><td>tolerance std</td><td>projection</td><td>mm</td></tr><tr><td colspan="4"></td><td>ISO 1302</td><td>✓</td><td>ISO 406</td><td>ISO 1101</td><td></td></tr><tr><td colspan="4"></td><td colspan="4">TOLERANCES UNLESS OTHERWISE SPECIFIED</td><td></td></tr><tr><td>rev</td><td>ecn no</td><td>dr</td><td>date</td><td>Dr</td><td>M PESSON</td><td>2006/11/14</td><td>ANGULAR</td><td>0.X</td><td>±0.3</td><td>size</td><td>A2</td><td>Scale</td><td>2:1</td></tr><tr><td>A</td><td>LS06-0174</td><td>MPE</td><td>2006/11/14</td><td>Eng</td><td>P LEGARE</td><td>2006/11/14</td><td>LINEAR</td><td>0.XX</td><td>±0.1</td><td>ECN</td><td>LS07-0273</td><td></td><td></td></tr><tr><td>B</td><td>LS07-0273</td><td>MPE</td><td>2007/10/30</td><td>Chr</td><td>P LEGARE</td><td>2006/11/14</td><td>0° ±2°</td><td>0.XXX</td><td>±0.05</td><td>Product family</td><td>-</td><td>Spec.ref</td><td></td></tr><tr><td>-</td><td>-</td><td>-</td><td>-</td><td>Appr</td><td>P LEGARE</td><td>2006/11/14</td><td colspan="7"></td></tr><tr><td colspan="4"></td><td colspan="4"></td><td colspan="2">SUB MALE DM HE501 series</td><td colspan="2">C01-8637-1739</td><td>Rev.</td><td>B</td></tr><tr><td colspan="4"></td><td colspan="4">with 3 level wire wrap contact</td><td colspan="2">dag no</td><td colspan="2">CUSTOMER</td><td colspan="2">sheet 1 of 4</td></tr><tr><td colspan="4"></td><td colspan="4">catalog no</td><td colspan="2"></td><td colspan="2"></td><td colspan="2"></td></tr></table>					www.fciconnect.com				surface	-	tolerance std	projection	mm					ISO 1302	✓	ISO 406	ISO 1101						TOLERANCES UNLESS OTHERWISE SPECIFIED					rev	ecn no	dr	date	Dr	M PESSON	2006/11/14	ANGULAR	0.X	±0.3	size	A2	Scale	2:1	A	LS06-0174	MPE	2006/11/14	Eng	P LEGARE	2006/11/14	LINEAR	0.XX	±0.1	ECN	LS07-0273			B	LS07-0273	MPE	2007/10/30	Chr	P LEGARE	2006/11/14	0° ±2°	0.XXX	±0.05	Product family	-	Spec.ref		-	-	-	-	Appr	P LEGARE	2006/11/14																SUB MALE DM HE501 series		C01-8637-1739		Rev.	B					with 3 level wire wrap contact				dag no		CUSTOMER		sheet 1 of 4						catalog no										F
www.fciconnect.com				surface	-	tolerance std	projection	mm																																																																																																																														
				ISO 1302	✓	ISO 406	ISO 1101																																																																																																																															
				TOLERANCES UNLESS OTHERWISE SPECIFIED																																																																																																																																		
rev	ecn no	dr	date	Dr	M PESSON	2006/11/14	ANGULAR	0.X	±0.3	size	A2	Scale	2:1																																																																																																																									
A	LS06-0174	MPE	2006/11/14	Eng	P LEGARE	2006/11/14	LINEAR	0.XX	±0.1	ECN	LS07-0273																																																																																																																											
B	LS07-0273	MPE	2007/10/30	Chr	P LEGARE	2006/11/14	0° ±2°	0.XXX	±0.05	Product family	-	Spec.ref																																																																																																																										
-	-	-	-	Appr	P LEGARE	2006/11/14																																																																																																																																
								SUB MALE DM HE501 series		C01-8637-1739		Rev.	B																																																																																																																									
				with 3 level wire wrap contact				dag no		CUSTOMER		sheet 1 of 4																																																																																																																										
				catalog no																																																																																																																																		
	1	2	3	4	5	6	7	8																																																																																																																														

1 2 3 4 5 6 7 8

A

B

C

D

E

F

A

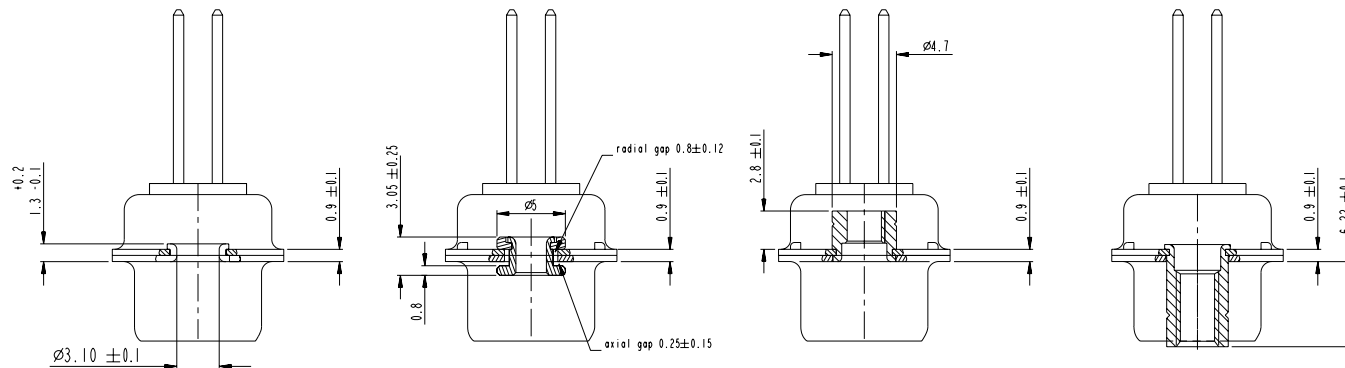
B

C

D

E

F



FRONT ACCESSORY	Blank without	F floating mounting	L insert M3 O insert UNC 4.40	V female screw UNC 4.40
-----------------	---------------	---------------------	----------------------------------	-------------------------

PART NUMBER	FRONT ACCESSORY
D*MxxP443	without
D*MFxxP443	floating mounting
D*MLxxP443	insert M3
D*MOxxP443	insert UNC 4.40
D*MVxxP443	female screw UNC 4.40

shell size	Contact number
E	09
A	15
B	25
C	37
D	50

PART NUMBER	FRONT ACCESSORY
D*MxxP400	without
D*MFxxP400	floating mounting
D*MLxxP400	insert M3
D*MOxxP400	insert UNC 4.40
D*MVxxP400	female screw UNC 4.40

CROSS REFERENCES HE501 and FCI

HE501 P/N	FCI P/N	FRONT ACCESSORY
HE501NxxKP3	D*MxxP400	without
HE501FxxKP3	D*MFxxP400	floating mounting

SCALE: 4

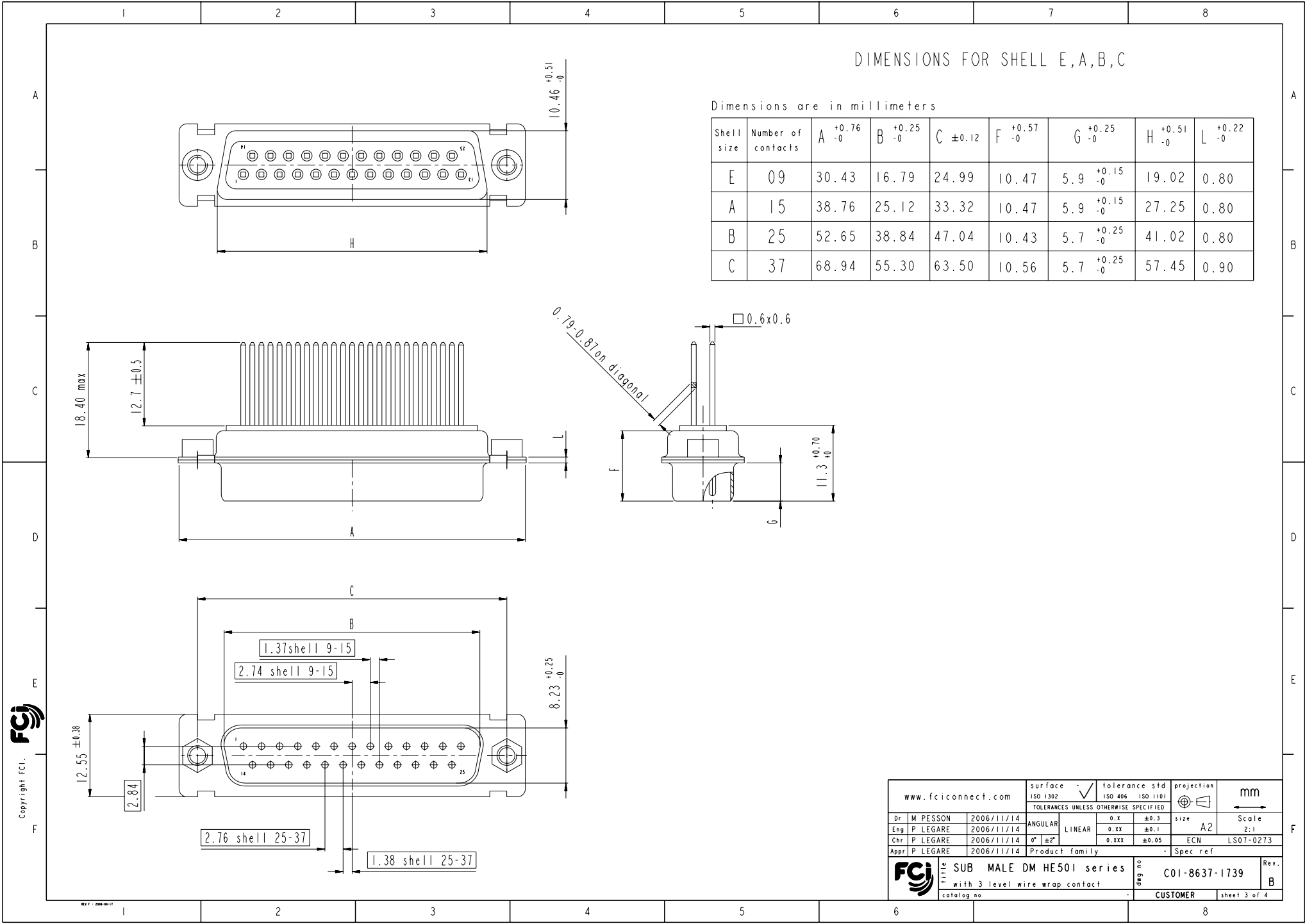
www.fciconnect.com		surface -	tolerance std	projection	mm
		ISO 1302	ISO 406	ISO 1101	
		TOLERANCES UNLESS OTHERWISE SPECIFIED			
Dr	M PESSON	2006/11/14	ANGULAR	0.X	±0.3
Eng	P LEGARE	2006/11/14	LINEAR	0.XX	±0.1
Chr	P LEGARE	2006/11/14	0° ±2°	0.XXX	±0.05
Appr	P LEGARE	2006/11/14	Product family	-	Spec ref
FCI		SUB MALE DM HE501 series		deg no	C01-8637-1739
		with 3 level wire wrap contact		Rev.	B
		catalog no	-	CUSTOMER	sheet 2 of 4



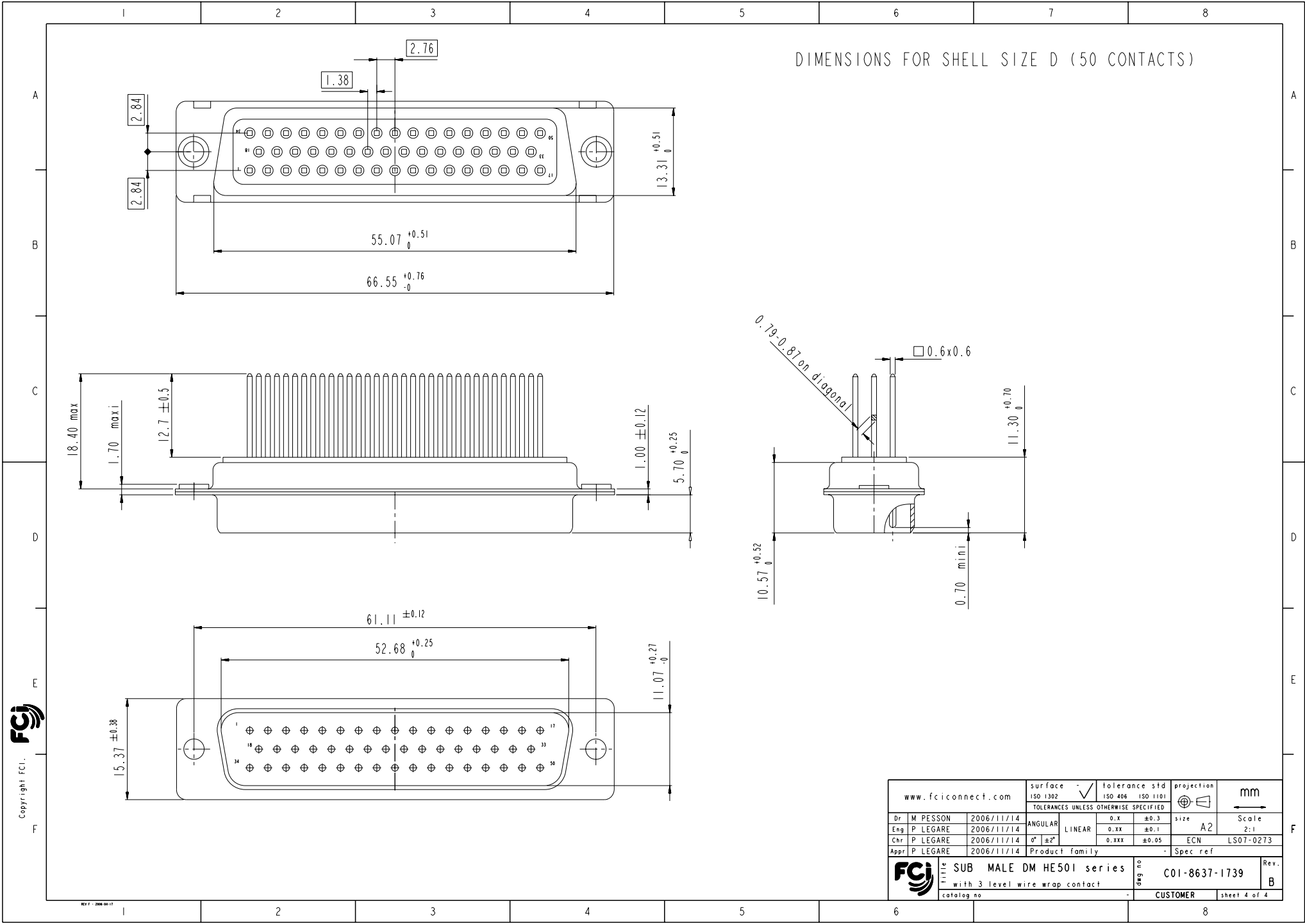
Copyright FCI.

REV 7 - 2006-04-17

1 2 3 4 5 6 7 8



www.fciconnect.com		surface ISO 1302	-	tolerance std ISO 406 ISO 1101	projection TOLERANCES UNLESS OTHERWISE SPECIFIED	mm
Dr	M PESSON	2006/11/14	ANGULAR	0.X ± 0.3	size A2	Scale 2:1
Eng	P LEGARE	2006/11/14	LINEAR	0.XX ± 0.1	ECN LS07-0273	
Chr	P LEGARE	2006/11/14	0° $\pm 2°$	0.XXX ± 0.05		
Appr	P LEGARE	2006/11/14	Product family	-	Spec ref	
SUB MALE DM HE501 series		Title		C01-8637-1739		Rev. B
with 3 level wire wrap contact		catalog no		CUSTOMER		sheet 3 of 4



Mouser Electronics

Authorized Distributor

Click to View Pricing, Inventory, Delivery & Lifecycle Information:

[FCI / Amphenol:](#)

[DBML25P400](#) [DBM25P400](#) [DBMO25P400](#) [DDMO50P400](#) [DBMF25P400](#)