

DESIGNED & DIMENSIONED IN MILLIMETERS (INCHES FOR REFERENCE ONLY)

MEC2-XX-XX-X-XXX-XX-XX

No OF POSITIONS (PER ROW)

-05, -08, -20, -30, -40, -50
(SEE TABLE 2 FOR POSITION
REMOVED TO POLARIZE)

CARD THICKNESS

-01: 1.57mm [.062"] THICK
-02: 2.36mm [.093"] THICK

PLATING SPECIFICATION

-L: 10μ" LIGHT SELECTIVE GOLD
IN CONTACT AREA MATTE
TIN ON TAIL

ROW SPECIFICATION

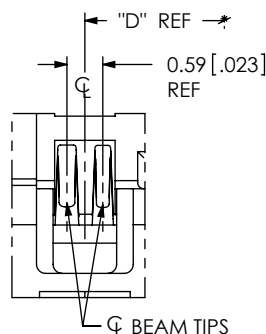
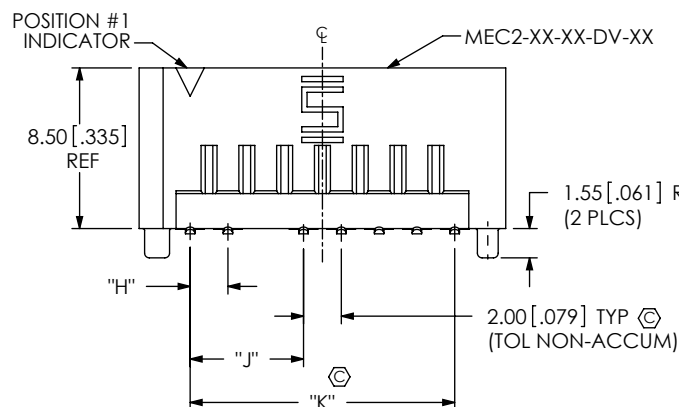
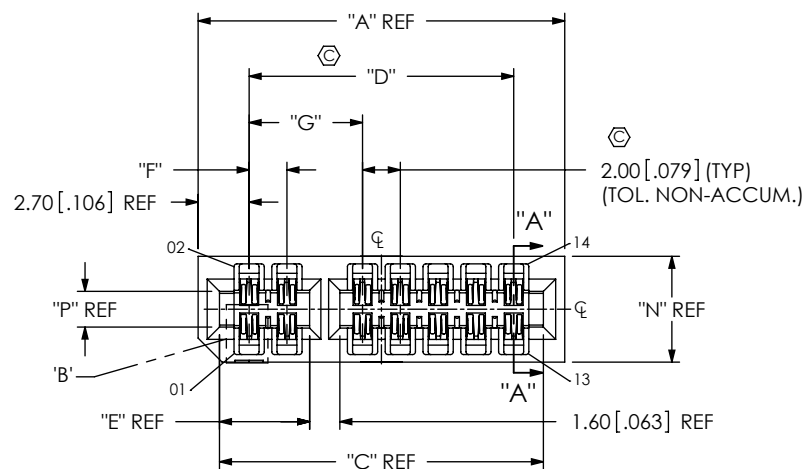
-DV: SURFACE MOUNT
***-TH1: THROUGH HOLE FOR
1.57mm [.062"] THICK BOARD
*-TH2: THROUGH HOLE FOR
2.36mm [.093"] THICK BOARD

PACKAGING

-K: POLYIMIDE FILM PAD
(SEE SHT 2, TABLE 6) AVAILABLE WITH -TR ONLY
(-05 THRU -30 POS ONLY)
-TR: TAPE & REEL (-05 THRU -30 POS ONLY)

OPTION

-NP: NON-POLARIZED
(-05, -08, -20 & -30 POSITIONS ONLY)
(USE MEC2-XX-XX-DV-NP) (SEE FIG 4, SHT 3)
-WT: WELD TABS
(STANDARD ON -02 CARD THICKNESS)
(OPTIONAL ON -01 CARD THICKNESS)
(SEE FIG 2, SHT 2)



DETAIL 'B'
SCALE 8:1

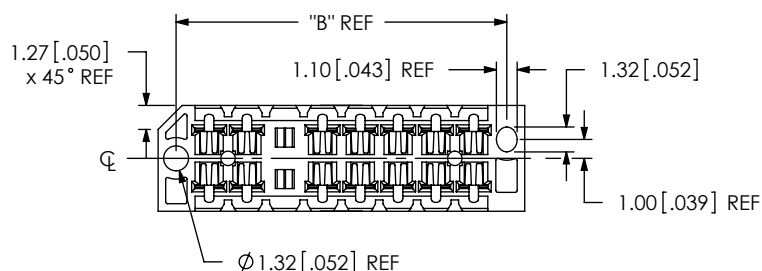


FIG 1

(MEC2-08-01-XX-DV-XX SHOWN)

NOTES:

1. \odot REPRESENTS A CRITICAL DIMENSION.
2. BURR ALLOWANCE: 0.04 [.0015] MAX.
3. MINIMUM PUSHOUT FORCE: 2.2 NEWTONS [.50LBS.]
4. ALL TAIL TO TAIL DIMENSIONS MEASURED TIP TO TIP.
5. ASSEMBLIES TO BE PACKAGED IN TUBES, UNLESS -TR IS SPECIFIED.
6. MATING EDGE CARD THICKNESS TOLERANCE NOT TO EXCEED $\pm 10\%$

TABLE 1	
No OF POS	COPLANARITY
-05 THRU -30	0.102 [.0040]
-40 & -50	0.152 [.0060]

TABLE 2	
No OF POS	POLARIZED POSITIONS
**05	3, 4
**08	5, 6
**20	15, 16
**30	21, 22
**40	31, 32
**50	41, 42

(**=NUMBER OF POSITIONS WILL
BE REDUCED BY 1 PER ROW
FOR POLARIZATION)

TABLE 3					
No. OF POS. PER ROW	"A"	"B"	"C"	"D"	"E"
-05	13.40 [.528]	11.50 [.453]	11.14 [.439]	8.00 [.3150]	2.77 [.109]
-08	19.40 [.764]	17.50 [.689]	17.14 [.675]	14.00 [.5512]	4.77 [.188]
-20	43.40 [1.709]	41.50 [1.634]	41.14 [1.620]	38.00 [1.4961]	14.77 [.581]
-30	63.40 [2.496]	61.50 [2.421]	61.14 [2.407]	58.00 [2.2835]	20.77 [.818]
-40	83.40 [3.283]	81.50 [3.209]	81.14 [3.194]	78.00 [3.0709]	30.77 [1.211]
-50	103.40 [4.071]	101.50 [3.996]	101.14 [3.982]	98.00 [3.8583]	40.77 [1.605]
No. OF POS. PER ROW	"F"	"G"	"H"	"J"	"K"
-05	N/A	4.00 [.1575]	N/A	4.00 [.157]	8.00 [.315]
-08	2.00 [.0787]	6.00 [.2362]	2.00 [.079]	6.00 [.236]	14.00 [.551]
-20	12.00 [.4724]	16.00 [.6299]	12.00 [.472]	16.00 [.630]	38.00 [1.496]
-30	18.00 [.7087]	22.00 [.8661]	18.00 [.709]	22.00 [.866]	58.00 [2.283]
-40	28.00 [1.1024]	32.00 [1.2598]	28.00 [1.102]	32.00 [1.260]	78.00 [3.071]
-50	38.00 [1.4961]	42.00 [1.6535]	38.00 [1.496]	42.00 [1.654]	98.00 [3.858]

TABLE 4					
CARD THICKNESS	"N"	"P"	"R"	"S"	"V"
-01 (.062 in)	5.60 [.220]	1.89 [.074]	0.55 [.022]	4.66 [.183]	3.02 [.119]
-02 (.093 in)	6.30 [.248]	2.68 [.106]	1.34 [.053]	5.45 [.215]	3.81 [.150]

UNLESS OTHERWISE SPECIFIED,
DIMENSIONS ARE IN MILLIMETERS.

TOLERANCES ARE:

DECIMALS

ANGLES

.X: $\pm .3$ [.01].XX: $\pm .13$ [.005].XXX: $\pm .05$ [.0020]

PROPRIETARY NOTE

THIS DOCUMENT CONTAINS INFORMATION
CONFIDENTIAL AND PROPRIETARY TO
SAMTEC, INC. AND SHALL NOT BE REPRODUCED
OR TRANSFERRED TO OTHER DOCUMENTS OR
DISCLOSED TO OTHERS OR USED FOR ANY
PURPOSE OTHER THAN THAT WHICH IT WAS
OBTAINED WITHOUT THE EXPRESSED WRITTEN
CONSENT OF SAMTEC, INC.

MATERIAL:

DO NOT SCALE DRAWING

SHEET SCALE: 1:0.4

INSULATOR: LCP, UL 94 V0
COLOR: -01 CARD THICKNESS BLACK,
-02 CARD THICKNESS NATURAL
CONTACT: BeCu ALLOY

DESCRIPTION:

MEC2 2.0mm EDGE CARD ASSEMBLY

DWG. NO.

MEC2-XX-XX-X-XXX-XX-XX

BY: KNOWLDEN

2/14/10

SHEET 1 OF 3

samtec

520 PARK EAST BLVD, NEW ALBANY, IN 47150
PHONE: 812-944-6733 FAX: 812-948-5047
e-Mail: info@SAMTEC.COM code: 55322

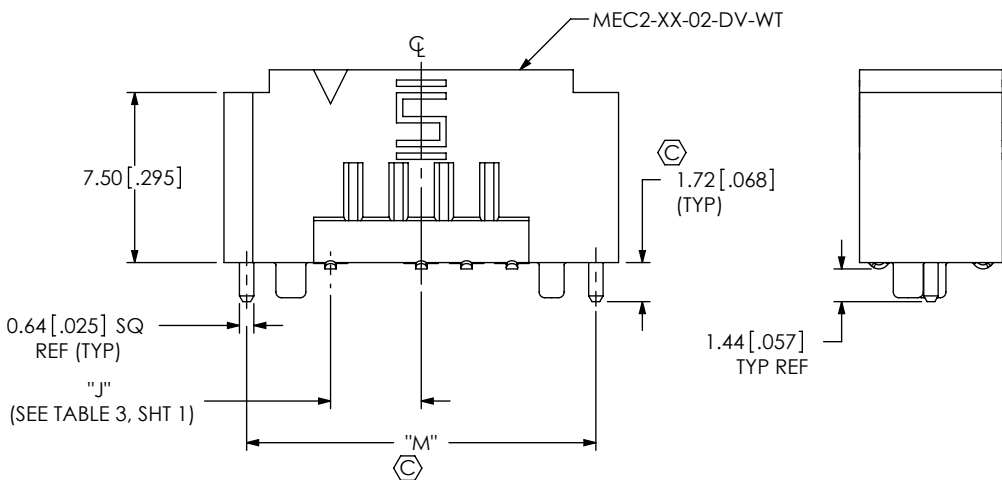
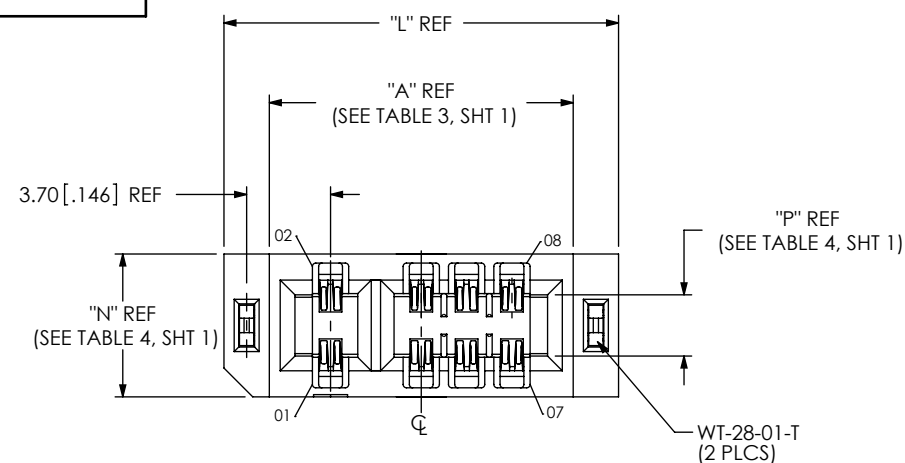


FIG 2
(MEC2-05-02-XX-DV-WT SHOWN)
(SAME AS FIG. 1, EXCEPT AS SHOWN)

TABLE 5		
No. OF POS. PER ROW	"L"	"M"
-05	17.40 [.685]	15.40 [.606]
-08	23.40 [.921]	21.40 [.843]
-20	47.40 [1.866]	45.40 [1.787]
-30	67.40 [2.654]	65.40 [2.575]
-40	87.40 [3.441]	85.40 [3.362]
-50	107.40 [4.228]	105.40 [4.150]

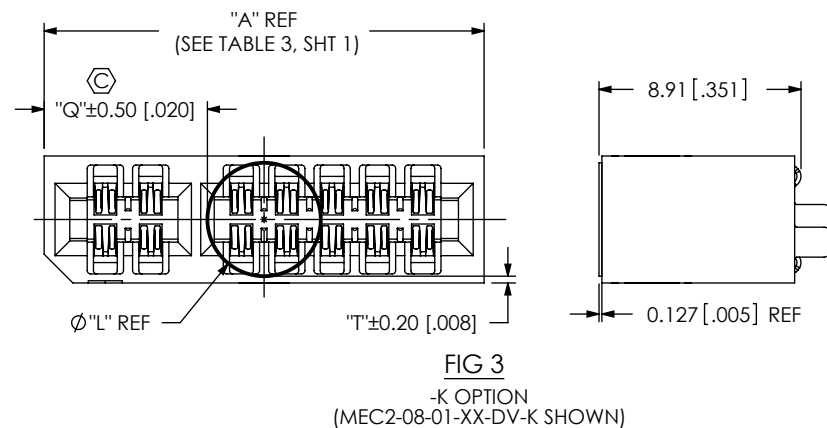
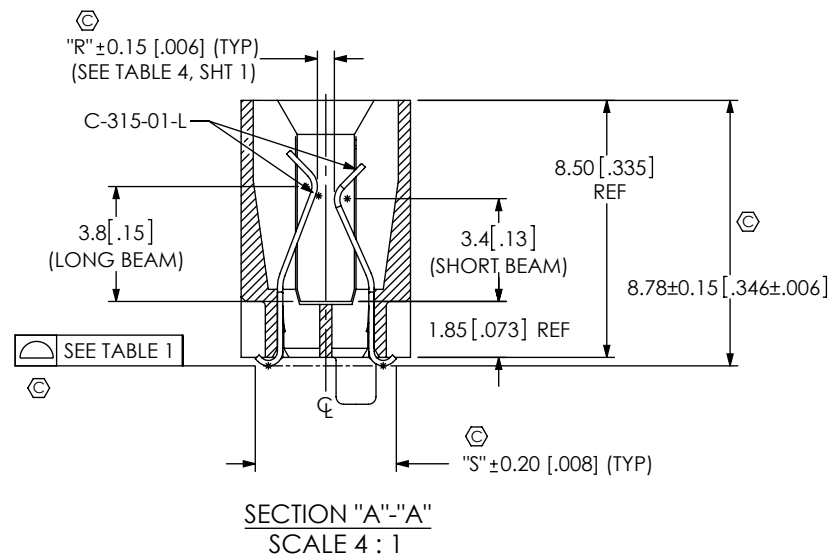


TABLE 6							
BOARD THICKNESS	L DIA.	"T"	"Q"				
			No OF POSITIONS PER ROW				
			-05	-08	-20	-30	KAPTON CALL-OUT
-01	5.00 [.197]	0.30	4.20 [.165]	7.20 [.283]	19.20 [.756]	29.20 [1.150]	K-DOT-.197-.344-.005
-02	6.00 [.236]	0.15	3.70 [.146]	6.70 [.264]	18.70 [.736]	28.70 [1.130]	K-DOT-.236-.343-.005
-01 WITH -WT	5.00 [.197]	0.30	6.20 [.244]	9.20 [.362]	21.20 [.835]	31.20 [1.228]	K-DOT-.197-.344-.005
-02 WITH -WT	6.00 [.236]	0.15	5.70 [.224]	10.70 [.421]	22.70 [.894]	32.70 [1.287]	K-DOT-.236-.343-.005

PROPRIETARY NOTE
THIS DOCUMENT CONTAINS INFORMATION
CONFIDENTIAL AND PROPRIETARY TO
SAMTEC, INC. AND SHALL NOT BE REPRODUCED
OR TRANSFERRED TO OTHER DOCUMENTS OR
DISCLOSED TO OTHERS OR USED FOR ANY
PURPOSE OTHER THAN THAT WHICH IT WAS
OBTAINED WITHOUT THE EXPRESSED WRITTEN
CONSENT OF SAMTEC, INC.

DO NOT SCALE DRAWING

SHEET SCALE: 3:1

520 PARK EAST BLVD, NEW ALBANY, IN 47150
PHONE: 812-944-6733 FAX: 812-948-5047
e-Mail: info@SAMTEC.com code: 55322

DESCRIPTION:
MEC2 2.0mm EDGE CARD ASSEMBLY

DWG. NO.
MEC2-XX-XX-X-XXX-XX-XX

BY: KNOWLDEN 2/14/10 SHEET 2 OF 3

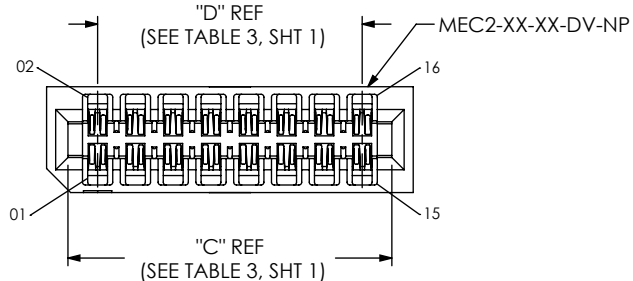


FIG 4
(MEC2-08-01-XX-DV-NP SHOWN)
(SAME AS FIG. 1, EXCEPT AS SHOWN)

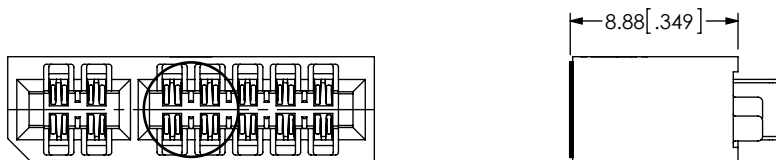


FIG 6
MEC2-08-01-L-TH1-K SHOWN
(DIFFERENT AS SHOWN, OTHERWISE SAME AS FIG 3)

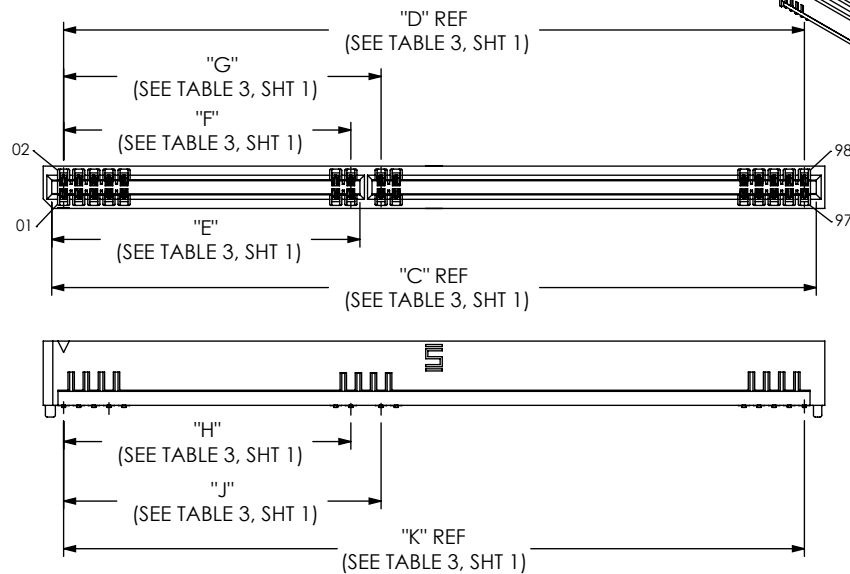


FIG 5
SCALE 1:1
(MEC2-50-01-XX-DV-XX SHOWN)
(SAME AS FIG 1, EXCEPT AS SHOWN)
(SOME CENTER FEATURES REMOVED FOR CLARITY)

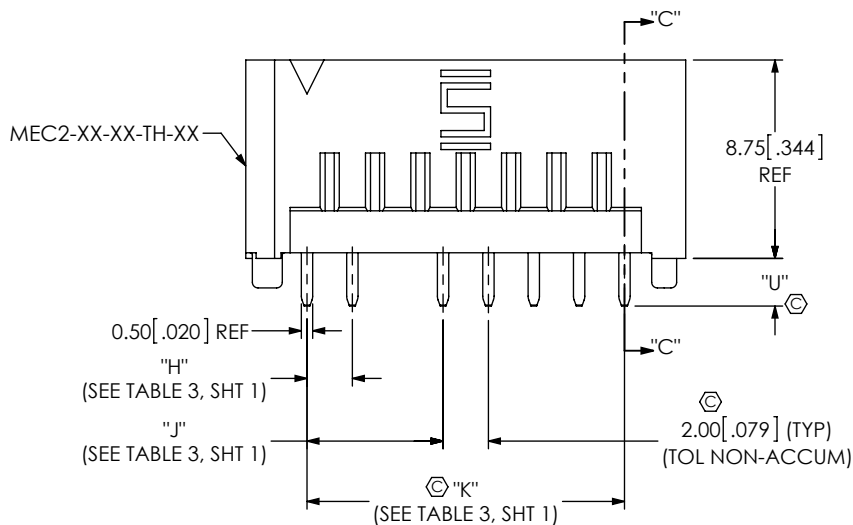
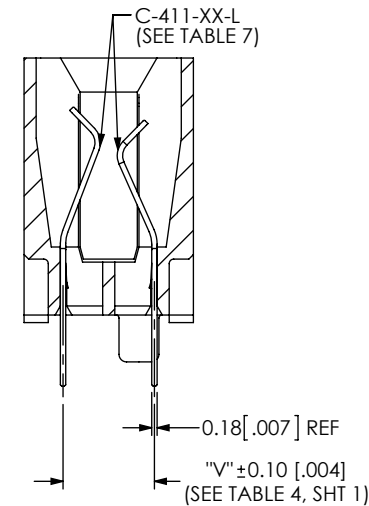
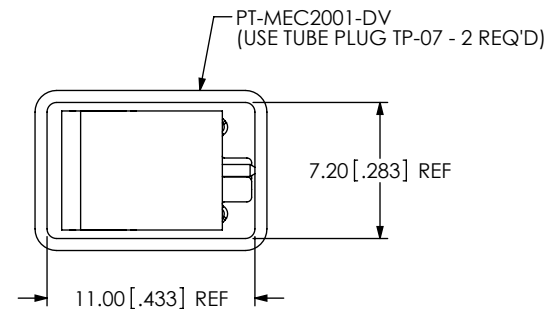


FIG 7
SCALE 3:1
MEC2-08-01-L-TH1-K SHOWN
(SAME AS FIG 1, EXCEPT AS SHOWN)



SECTION "C"-"C"
SCALE 4:1



PACKAGING VIEW

TABLE 7		
ROW SPECS	"U"	CONTACT
***_TH1	2.10 [.083]	C-411-01-L
*_TH2	2.90 [.114]	C-411-02-L

(* = NOT TOOLED)
(*** = NOT RELEASED)

PROPRIETARY NOTE
THIS DOCUMENT CONTAINS INFORMATION
CONFIDENTIAL AND PROPRIETARY TO
SAMTEC, INC. AND SHALL NOT BE REPRODUCED
OR TRANSFERRED TO OTHER DOCUMENTS OR
DISCLOSED TO OTHERS OR USED FOR ANY
PURPOSE OTHER THAN THAT WHICH IT WAS
OBTAINED WITHOUT THE EXPRESSED WRITTEN
CONSENT OF SAMTEC, INC.

DO NOT SCALE DRAWING

SHEET SCALE: 5:2

samtec

520 PARK EAST BLVD, NEW ALBANY, IN 47150
PHONE: 812-944-6733 FAX: 812-948-5047
e-Mail: info@SAMTEC.com code: 55322

DESCRIPTION:
MEC2 2.0mm EDGE CARD ASSEMBLY

DWG. NO.
MEC2-XX-XX-X-XXX-XX-XX

BY: KNOWLDEN 2/14/10 SHEET 3 OF 3