

## Notice for TAIYO YUDEN products

---

Please read this notice before using the TAIYO YUDEN products.

### REMINDERS

- Product information in this catalog is as of October 2016. All of the contents specified herein are subject to change without notice due to technical improvements, etc. Therefore, please check for the latest information carefully before practical application or use of our products.

Please note that TAIYO YUDEN shall not be in any way responsible for any damages and defects in products or equipment incorporating our products, which are caused under the conditions other than those specified in this catalog or individual specification.

- Please contact TAIYO YUDEN for further details of product specifications as the individual specification is available.
- Please conduct validation and verification of our products in actual condition of mounting and operating environment before using our products.

- The products listed in this catalog are intended for use in general electronic equipment (e.g., AV equipment, OA equipment, home electric appliances, office equipment, information and communication equipment including, without limitation, mobile phone, and PC). Please be sure to contact TAIYO YUDEN for further information before using the products for any equipment which may directly cause loss of human life or bodily injury (e.g., transportation equipment including, without limitation, automotive powertrain control system, train control system, and ship control system, traffic signal equipment, disaster prevention equipment, medical equipment, highly public information network equipment including, without limitation, telephone exchange, and base station).

Please do not incorporate our products into any equipment requiring high levels of safety and/or reliability (e.g., aerospace equipment, aviation equipment, nuclear control equipment, undersea equipment, military equipment).

When our products are used even for high safety and/or reliability-required devices or circuits of general electronic equipment, it is strongly recommended to perform a thorough safety evaluation prior to use of our products and to install a protection circuit as necessary.

Please note that unless you obtain prior written consent of TAIYO YUDEN, TAIYO YUDEN shall not be in any way responsible for any damages incurred by you or third parties arising from use of the products listed in this catalog for any equipment requiring inquiry to TAIYO YUDEN or prohibited for use by TAIYO YUDEN as described above.

- Please note that TAIYO YUDEN shall have no responsibility for any controversies or disputes that may occur in connection with a third party's intellectual property rights and other related rights arising from use of our products. TAIYO YUDEN grants no license for such rights.
- Please note that unless otherwise agreed in writing, the scope of warranty for our products is limited to the delivered our products themselves and TAIYO YUDEN shall not be in any way responsible for any damages resulting from a fault or defect in our products.
- The contents of this catalog are applicable to our products which are purchased from our sales offices or authorized distributors (hereinafter "TAIYO YUDEN's official sales channel"). Please note that the contents of this catalog are not applicable to our products purchased from any seller other than TAIYO YUDEN's official sales channel.

- Caution for Export

Some of our products listed in this catalog may require specific procedures for export according to "U.S. Export Administration Regulations", "Foreign Exchange and Foreign Trade Control Law" of Japan, and other applicable regulations. Should you have any questions on this matter, please contact our sales staff.

# METAL CORE SMD POWER INDUCTORS(MCOIL™ MD SERIES)



REFLOW

## PARTS NUMBER

\*Operating Temp.: -40~+125°C (Including self-generated heat)

M	D	K	K	1	6	1	6	T	1	R	0	M	M	△
①	②	③	④	⑤	⑥	⑦	⑧							

△=Blank space

### ①Series name

Code	Series name
MD	Metal base coil specification

### ②Dimensions (H)

Code	Dimensions (H) [mm]
JE	0.95
KK	1.0
MK	1.2
PK	1.4
WK	2.0

### ③Dimensions (L × W)

Code	Dimensions (L × W) [mm]
1616	1.6 × 1.6
2020	2.0 × 2.0
3030	3.0 × 3.0
4040	4.0 × 4.0
5050	4.9 × 4.9

### ④Packaging

Code	Packaging
T	Taping

### ⑤Nominal inductance

Code (example)	Nominal inductance [μH]
R47	0.47
1R0	1.0
4R7	4.7

※R=Decimal point

### ⑥Inductance tolerance

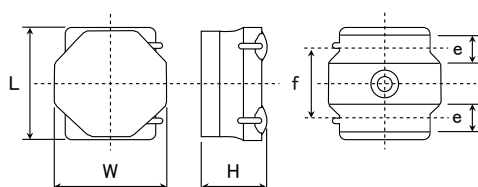
Code	Inductance tolerance
M	±20%
N	±30%

### ⑦Special code

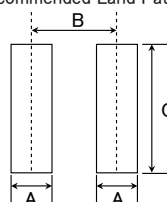
Code	Special code
F	Ferrite coating
M	Metal coating

### ⑧Internal code

## STANDARD EXTERNAL DIMENSIONS / STANDARD QUANTITY



### Recommended Land Patterns



Type	A	B	C
1616	0.5	1.10	1.65
2020	0.65	1.35	2.0
3030	0.8	2.2	2.7
4040	1.2	2.8	3.7
5050	1.5	3.6	4.2

Unit: mm

Type	L	W	H	e	f	Standard quantity [pcs] Taping
MDKK1616	1.64±0.1 (0.065±0.004)	1.64±0.1 (0.065±0.004)	1.0 max (0.039 max)	0.40 +0.2/-0.1 (0.016 +0.008/-0.004)	1.0±0.2 (0.039±0.008)	2500
MDJE2020	2.0±0.15 (0.079±0.006)	2.0±0.15 (0.079±0.006)	0.95 max (0.0374 max)	0.50±0.2 (0.02±0.008)	1.25±0.2 (0.049±0.008)	2500
MDKK2020	2.0±0.15 (0.079±0.006)	2.0±0.15 (0.079±0.006)	1.0 max (0.039 max)	0.50±0.2 (0.02±0.008)	1.25±0.2 (0.049±0.008)	2500
MDMK2020	2.0±0.15 (0.079±0.006)	2.0±0.15 (0.079±0.006)	1.2 max (0.047 max)	0.50±0.2 (0.02±0.008)	1.25±0.2 (0.049±0.008)	2500
MDKK3030	3.0±0.1 (0.118±0.004)	3.0±0.1 (0.118±0.004)	1.0 max (0.039 max)	0.90±0.2 (0.035±0.008)	1.9±0.2 (0.075±0.008)	2000
MDMK3030	3.0±0.1 (0.118±0.004)	3.0±0.1 (0.118±0.004)	1.2 max (0.047 max)	0.90±0.2 (0.035±0.008)	1.9±0.2 (0.075±0.008)	2000
MDJE4040	4.0±0.2 (0.157±0.008)	4.0±0.2 (0.157±0.008)	0.95 max (0.0374 max)	1.1±0.2 (0.043±0.008)	2.5±0.2 (0.098±0.008)	1000
MDMK4040	4.0±0.2 (0.157±0.008)	4.0±0.2 (0.157±0.008)	1.2 max (0.047 max)	1.1±0.2 (0.043±0.008)	2.5±0.2 (0.098±0.008)	1000
MDWK4040	4.0±0.2 (0.157±0.008)	4.0±0.2 (0.157±0.008)	2.0 max (0.0787 max)	1.1±0.2 (0.043±0.008)	2.5±0.2 (0.098±0.008)	700
MDPK5050	4.9±0.2 (0.193±0.008)	4.9±0.2 (0.193±0.008)	1.4 max (0.055 max)	1.20±0.2 (0.047±0.008)	3.3±0.2 (0.130±0.008)	1000

Unit: mm (inch)

▶ This catalog contains the typical specification only due to the limitation of space. When you consider the purchase of our products, please check our specification. For details of each product (characteristics graph, reliability information, precautions for use, and so on), see our website (<http://www.ty-top.com/>).

## PARTS NUMBER

## ●MDKK1616 type 【Thickness: 1.0mm max.】

Parts number	EHS	Nominal inductance [μH]	Inductance tolerance	Self-resonant frequency [MHz] (min.)	DC Resistance[Ω]		Rated current ※) [mA]				Measuring frequency[kHz]
							Saturation current: Idc1		Temperature rise current: Idc2		
					Max.	Typ.	Max.	Typ.	Max.	Typ.	
MDKK1616TR47MM	RoHS	0.47	±20%	—	0.095	0.080	3,300	4,100	1,500	1,780	1
MDKK1616T1R0MM	RoHS	1.0	±20%	—	0.140	0.120	2,200	2,750	1,200	1,490	1
MDKK1616T1R5MM	RoHS	1.5	±20%	—	0.185	0.160	1,750	2,200	1,100	1,330	1
MDKK1616T2R2MM	RoHS	2.2	±20%	—	0.250	0.215	1,500	1,800	950	1,110	1
MDKK1616T3R3MM	RoHS	3.3	±20%	—	0.515	0.450	1,150	1,450	650	730	1
MDKK1616T4R7MM	RoHS	4.7	±20%	—	0.640	0.550	950	1,200	550	630	1
MDKK1616T6R8MM	RoHS	6.8	±20%	—	0.820	0.710	630	880	520	600	1
MDKK1616T100MM	RoHS	10	±20%	—	1.120	0.970	550	800	450	500	1
MDKK1616T150MM	RoHS	15	±20%	—	1.800	1.600	460	640	400	440	1

## ●MDJE2020 type 【Thickness: 0.95mm max.】

Parts number	EHS	Nominal inductance [μH]	Inductance tolerance	Self-resonant frequency [MHz] (min.)	DC Resistance[Ω]		Rated current ※) [mA]				Measuring frequency[kHz]
							Saturation current: Idc1		Temperature rise current: Idc2		
					Max.	Typ.	Max.	Typ.	Max.	Typ.	
MDJE2020T1R0MM	RoHS	1.0	±20%	—	0.121	0.106	3,100	3,800	1,550	1,800	1
MDJE2020T2R2MM	RoHS	2.2	±20%	—	0.266	0.230	1,550	1,900	1,050	1,200	1
MDJE2020T3R3MM	RoHS	3.3	±20%	—	0.340	0.290	1,350	1,600	950	1,100	1
MDJE2020T4R7MM	RoHS	4.7	±20%	—	0.475	0.410	1,200	1,550	850	950	1
MDJE2020T6R8MM	RoHS	6.8	±20%	—	0.630	0.550	800	1,100	750	850	1
MDJE2020T100MM	RoHS	10	±20%	—	1.040	0.910	700	900	550	600	1

## ●MDKK2020 type 【Thickness: 1.0mm max.】

Parts number	EHS	Nominal inductance [μH]	Inductance tolerance	Self-resonant frequency [MHz] (min.)	DC Resistance[Ω]		Rated current ※) [mA]				Measuring frequency[kHz]
							Saturation current: Idc1		Temperature rise current: Idc2		
					Max.	Typ.	Max.	Typ.	Max.	Typ.	
MDKK2020TR47MM	RoHS	0.47	±20%	—	0.046	0.040	3,500	4,150	2,200	2,500	1
MDKK2020TR68MM	RoHS	0.68	±20%	—	0.060	0.052	3,200	3,650	2,000	2,100	1
MDKK2020T1R0MM	RoHS	1.0	±20%	—	0.085	0.074	2,900	3,400	1,700	1,900	1
MDKK2020T1R5MM	RoHS	1.5	±20%	—	0.133	0.115	1,900	2,250	1,350	1,500	1
MDKK2020T2R2MM	RoHS	2.2	±20%	—	0.165	0.139	1,650	1,950	1,200	1,350	1
MDKK2020T3R3MM	RoHS	3.3	±20%	—	0.275	0.240	1,300	1,550	940	1,050	1
MDKK2020T4R7MM	RoHS	4.7	±20%	—	0.435	0.375	1,050	1,250	750	850	1
MDKK2020T100MM	RoHS	10	±20%	—	0.690	0.600	750	900	630	680	1
MDKK2020T150MM	RoHS	15	±20%	—	1.180	1.020	550	750	480	550	1

## ●MDMK2020 type 【Thickness: 1.2mm max.】

Parts number	EHS	Nominal inductance [ μ H]	Inductance tolerance	Self-resonant frequency [MHz] (min.)	DC Resistance[ Ω ]		Rated current ※) [mA]				Measuring frequency[kHz]
							Saturation current: Idc1		Temperature rise current: Idc2		
					Max.	Typ.	Max.	Typ.	Max.	Typ.	
MDMK2020TR47MM	RoHS	0.47	±20%	—	0.046	0.040	4,200	4,800	2,300	2,450	1
MDMK2020TR68MM	RoHS	0.68	±20%	—	0.058	0.050	3,500	4,100	2,000	2,200	1
MDMK2020T1R0MM	RoHS	1.0	±20%	—	0.064	0.056	2,550	2,900	1,900	2,050	1
MDMK2020T1R5MM	RoHS	1.5	±20%	—	0.086	0.075	2,000	2,300	1,650	1,750	1
MDMK2020T2R2MM	RoHS	2.2	±20%	—	0.109	0.095	1,750	2,000	1,450	1,550	1
MDMK2020T3R3MM	RoHS	3.3	±20%	—	0.178	0.155	1,350	1,550	1,150	1,200	1
MDMK2020T4R7MM	RoHS	4.7	±20%	—	0.242	0.210	1,150	1,300	950	1,050	1

## ●MDKK3030 type 【Thickness: 1.0mm max.】

Parts number	EHS	Nominal inductance [μH]	Inductance tolerance	Self-resonant frequency [MHz] (min.)	DC Resistance[Ω]		Rated current ※) [mA]				Measuring frequency[kHz]
							Saturation current: Idc1		Temperature rise current: Idc2		
							Max.	Typ.	Max.	Typ.	
MDKK3030TR47MM	RoHS	0.47	±20%	—	0.039	0.033	5,400	6,500	3,900	4,500	1
MDKK3030T1R0MM	RoHS	1.0	±20%	—	0.086	0.074	4,400	5,200	2,400	2,800	1
MDKK3030T1R5MM	RoHS	1.5	±20%	—	0.100	0.087	3,000	3,500	2,100	2,400	1
MDKK3030T2R2MM	RoHS	2.2	±20%	—	0.144	0.125	2,500	3,000	1,900	2,200	1
MDKK3030T3R3MM	RoHS	3.3	±20%	—	0.248	0.215	2,000	2,400	1,350	1,500	1
MDKK3030T4R7MM	RoHS	4.7	±20%	—	0.345	0.300	1,700	2,000	1,150	1,300	1
MDKK3030T6R8MM	RoHS	6.8	±20%	—	0.437	0.380	1,400	1,700	1,000	1,150	1
MDKK3030T100MM	RoHS	10	±20%	—	0.575	0.500	1,100	1,300	850	1,000	1

## ●MDMK3030 type 【Thickness: 1.2mm max.】

Parts number	EHS	Nominal inductance [μH]	Inductance tolerance	Self-resonant frequency [MHz] (min.)	DC Resistance[Ω]		Rated current ※) [mA]				Measuring frequency[kHz]
							Saturation current: Idc1		Temperature rise current: Idc2		
							Max.	Typ.	Max.	Typ.	
MDMK3030TR30MM	RoHS	0.30	±20%	—	0.020	0.017	7,600	9,200	5,500	6,400	1
MDMK3030TR33MM	RoHS	0.33	±20%	—	0.020	0.017	6,400	8,700	5,500	6,400	1
MDMK3030TR47MM	RoHS	0.47	±20%	—	0.027	0.023	6,300	7,500	4,700	5,500	1
MDMK3030T1R0MM	RoHS	1.0	±20%	—	0.050	0.043	4,300	5,100	3,300	3,900	1
MDMK3030T1R5MM	RoHS	1.5	±20%	—	0.074	0.064	3,400	4,100	2,500	3,000	1
MDMK3030T2R2MM	RoHS	2.2	±20%	—	0.112	0.097	2,800	3,600	2,100	2,400	1
MDMK3030T3R3MM	RoHS	3.3	±20%	—	0.167	0.145	2,100	2,700	1,650	1,900	1
MDMK3030T4R7MM	RoHS	4.7	±20%	—	0.263	0.228	1,800	2,300	1,350	1,550	1

► This catalog contains the typical specification only due to the limitation of space. When you consider the purchase of our products, please check our specification. For details of each product (characteristics graph, reliability information, precautions for use, and so on), see our website (<http://www.ty-top.com/>).

## ● MDJE4040 type 【Thickness: 0.95mm max.】

Parts number	EHS	Nominal inductance [ μ H]	Inductance tolerance	Self-resonant frequency [MHz] (min.)	DC Resistance[ Ω ]		Rated current ※) [mA]				Measuring frequency[kHz]
							Saturation current: Idc1		Temperature rise current: Idc2		
					Max.	Typ.	Max.	Typ.	Max.	Typ.	
MDJE4040TR47MM	RoHS	0.47	±20%	—	0.040	0.035	6,000	7,900	4,000	4,500	1
MDJE4040T1R0MM	RoHS	1.0	±20%	—	0.069	0.060	4,700	5,700	3,000	3,500	1
MDJE4040T1R5MM	RoHS	1.5	±20%	—	0.084	0.073	3,000	4,000	2,700	3,100	1
MDJE4040T2R2MM	RoHS	2.2	±20%	—	0.115	0.100	2,400	3,100	2,400	2,700	1
MDJE4040T3R3MM	RoHS	3.3	±20%	—	0.200	0.175	2,000	2,600	1,800	2,000	1
MDJE4040T4R7MM	RoHS	4.7	±20%	—	0.250	0.220	1,900	2,300	1,600	1,900	1
MDJE4040T6R8MM	RoHS	6.8	±20%	—	0.370	0.320	1,500	1,800	1,300	1,500	1
MDJE4040T100MM	RoHS	10	±20%	—	0.510	0.440	1,400	1,700	1,100	1,300	1

## ● MDMK4040F type 【Thickness: 1.2mm max.】

Parts number	EHS	Nominal inductance [ μ H]	Inductance tolerance	Self-resonant frequency [MHz] (min.)	DC Resistance[ Ω ]		Rated current ※) [mA]				Measuring frequency [kHz]
							Saturation current: Idc1		Temperature rise current: Idc2		
					Max.	Typ.	Max.	Typ.	Max.	Typ.	
MDMK4040TR47MF	RoHS	0.47	± 20%	—	0.029	0.025	7,500	10,000	4,600	5,400	100
MDMK4040T1R0MF	RoHS	1.0	± 20%	—	0.047	0.041	5,200	7,500	3,500	4,200	100
MDMK4040T1R2MF	RoHS	1.2	± 20%	—	0.047	0.041	4,200	6,200	3,500	4,200	100
MDMK4040T1R5MF	RoHS	1.5	± 20%	—	0.065	0.056	3,700	5,400	3,300	3,600	100
MDMK4040T2R2MF	RoHS	2.2	± 20%	—	0.092	0.080	3,200	4,500	2,500	2,900	100

## ● MDMK4040M type 【Thickness: 1.2mm max.】

Parts number	EHS	Nominal inductance [ μ H]	Inductance tolerance	Self-resonant frequency [MHz] (min.)	DC Resistance[ Ω ]		Rated current ※) [mA]				Measuring frequency[kHz]
							Saturation current: Idc1		Temperature rise current: Idc2		
					Max.	Typ.	Max.	Typ.	Max.	Typ.	
MDMK4040TR68MM	RoHS	0.68	±20%	—	0.029	0.025	6,700	7,800	5,000	5,700	1
MDMK4040T1R0MM	RoHS	1.0	±20%	—	0.036	0.031	5,000	6,200	4,500	5,100	1
MDMK4040T1R5MM	RoHS	1.5	±20%	—	0.065	0.056	4,500	5,600	3,200	3,600	1
MDMK4040T2R2MM	RoHS	2.2	±20%	—	0.079	0.069	3,800	4,500	2,800	3,200	1
MDMK4040T3R3MM	RoHS	3.3	±20%	—	0.130	0.113	3,200	4,000	2,200	2,500	1
MDMK4040T4R7MM	RoHS	4.7	±20%	—	0.160	0.140	2,500	3,000	1,900	2,200	1
MDMK4040T6R8MM	RoHS	6.8	±20%	—	0.230	0.200	1,900	2,200	1,600	1,800	1
MDMK4040T100MM	RoHS	10	±20%	—	0.330	0.280	1,700	2,000	1,400	1,600	1

## ● MDWK4040M type 【Thickness: 2.0mm max.】

Parts number	EHS	Nominal inductance [μH]	Inductance tolerance	Self-resonant frequency [MHz] (min.)	DC Resistance[Ω]		Rated current ※) [mA]				Measuring frequency[kHz]
							Saturation current: Idc1		Temperature rise current: Idc2		
					Max.	Typ.	Max.	Typ.	Max.	Typ.	
MDWK4040TR33NM	RoHS	0.33	±30%	—	0.013	0.011	16,000	21,000	7,800	8,800	1
MDWK4040TR47NM	RoHS	0.47	±30%	—	0.013	0.011	10,000	15,000	7,800	8,800	1
MDWK4040TR68MM	RoHS	0.68	±20%	—	0.016	0.014	8,000	12,000	7,300	8,300	1
MDWK4040T1R0MM	RoHS	1.0	±20%	—	0.027	0.023	7,000	9,400	5,100	5,800	1
MDWK4040T1R5MM	RoHS	1.5	±20%	—	0.041	0.035	7,000	9,400	4,100	4,700	1
MDWK4040T2R2MM	RoHS	2.2	±20%	—	0.054	0.047	5,400	7,500	3,500	4,000	1
MDWK4040T3R3MM	RoHS	3.3	±20%	—	0.075	0.066	3,700	5,200	3,000	3,300	1
MDWK4040T4R7MM	RoHS	4.7	±20%	—	0.107	0.093	3,500	5,000	2,500	2,800	1
MDWK4040T6R8MM	RoHS	6.8	±20%	—	0.158	0.138	2,900	4,000	2,000	2,300	1
MDWK4040T100MM	RoHS	10	±20%	—	0.194	0.169	2,200	3,100	1,600	1,900	1

## ● MDPK5050 type 【Thickness: 1.4mm max.】

Parts number	EHS	Nominal inductance [μH]	Inductance tolerance	Self-resonant frequency [MHz] (min.)	DC Resistance[Ω]		Rated current ※) [mA]				Measuring frequency[kHz]
							Saturation current: Idc1		Temperature rise current: Idc2		
					Max.	Typ.	Max.	Typ.	Max.	Typ.	
MDPK5050T1R0MM	RoHS	1.0	±20%	—	0.040	0.034	8,500	10,000	4,300	4,700	1
MDPK5050T2R2MM	RoHS	2.2	±20%	—	0.055	0.047	4,100	5,000	3,600	4,200	1
MDPK5050T3R3MM	RoHS	3.3	±20%	—	0.086	0.073	3,800	4,500	2,900	3,400	1
MDPK5050T4R7MM	RoHS	4.7	±20%	—	0.102	0.088	3,500	4,200	2,500	3,000	1
MDPK5050T6R8MM	RoHS	6.8	±20%	—	0.138	0.12	2,700	3,200	2,200	2,500	1
MDPK5050T100MM	RoHS	10	±20%	—	0.225	0.19	2,200	2,600	1,700	2,000	1

※) The saturation current value (Idc1) is the DC current value having inductance decrease down to 30%. (at 20°C)

※) The temperature rise current value (Idc2) is the DC current value having temperature increase up to 40°C. (at 20°C)

※) The rated current is the DC current value that satisfies both of current value saturation current value and temperature rise current value.

# METAL CORE SMD POWER INDUCTORS (MCOIL™ MD SERIES)

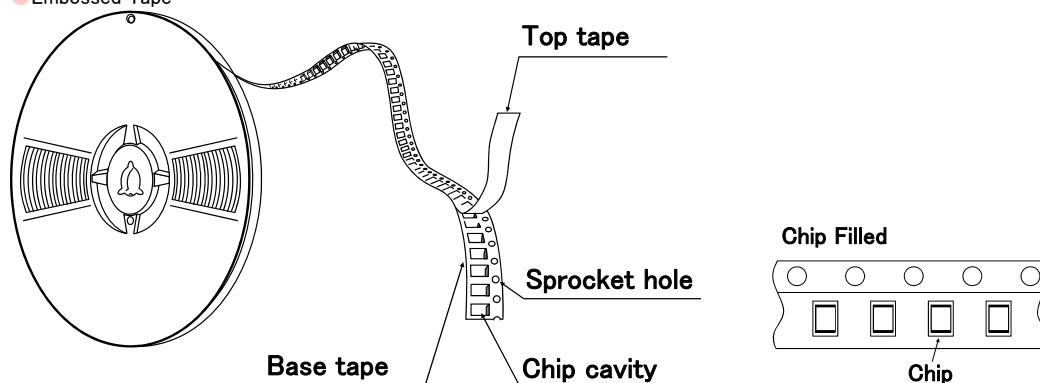
## PACKAGING

### ① Minimum Quantity

Type	Standard Quantity [pcs]
	Tape & Reel
MDKK1616	2500
MDJE2020	2500
MDKK2020	
MDMK2020	
MDKK3030	2000
MDMK3030	
MDJE4040	1000
MDMK4040	
MDWK4040	700
MDPK5050	1000

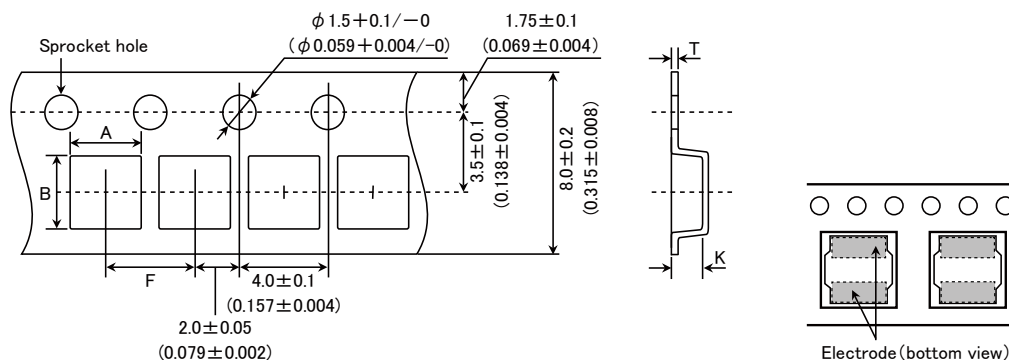
### ② Tape Material

#### ● Embossed Tape



### ③ Taping dimensions

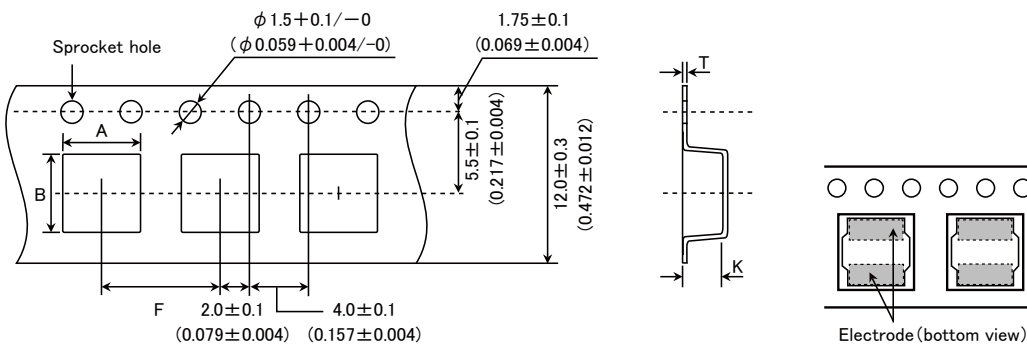
#### ● Embossed tape 8mm wide (0.315 inches wide)



Type	Chip cavity		Insertion pitch	Tape thickness	
	A	B	F	T	K
MDKK1616	$1.79 \pm 0.1$ ( $0.071 \pm 0.004$ )	$1.79 \pm 0.1$ ( $0.071 \pm 0.004$ )	$4.0 \pm 0.1$ ( $0.157 \pm 0.004$ )	$0.25 \pm 0.05$ ( $0.010 \pm 0.002$ )	$1.1 \pm 0.1$ ( $0.043 \pm 0.004$ )
MDJE2020	$2.2 \pm 0.1$ ( $0.102 \pm 0.004$ )	$2.2 \pm 0.1$ ( $0.102 \pm 0.004$ )	$4.0 \pm 0.1$ ( $0.157 \pm 0.004$ )	$0.25 \pm 0.05$ ( $0.009 \pm 0.002$ )	$1.3 \pm 0.1$ ( $0.051 \pm 0.004$ )
MDKK2020					
MDMK2020					
MDKK3030	$3.2 \pm 0.1$ ( $0.126 \pm 0.004$ )	$3.2 \pm 0.1$ ( $0.126 \pm 0.004$ )	$4.0 \pm 0.1$ ( $0.157 \pm 0.004$ )	$0.3 \pm 0.05$ ( $0.012 \pm 0.002$ )	$1.4 \pm 0.1$ ( $0.055 \pm 0.004$ )
MDMK3030					

Unit : mm (inch)

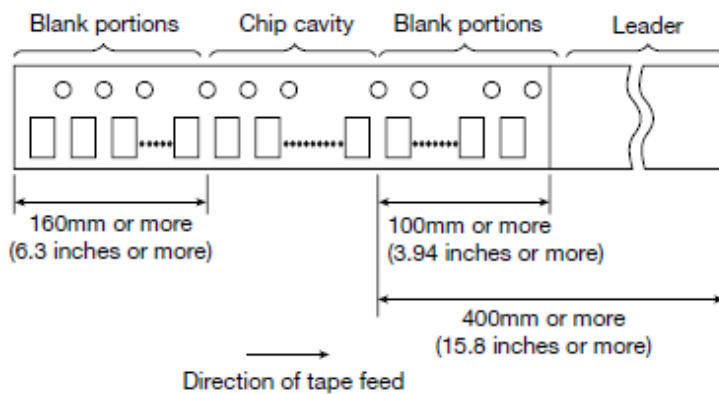
● Embossed tape 12mm wide (0.47 inches wide)



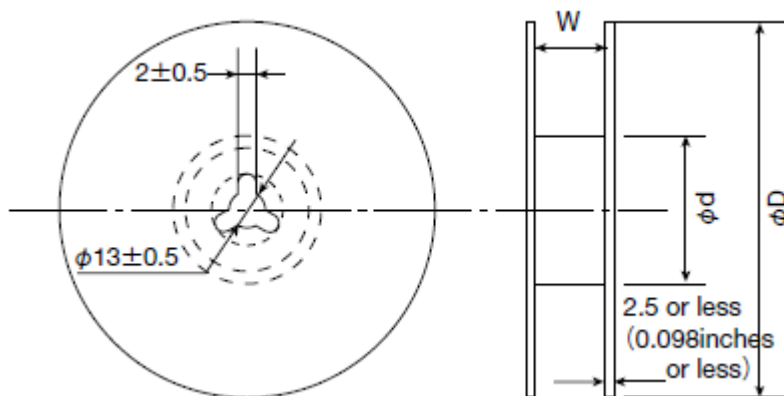
Type	Chip cavity		Insertion pitch	Tape thickness	
	A	B	F	T	K
MDJE4040	$4.3 \pm 0.1$ ( $0.169 \pm 0.004$ )	$4.3 \pm 0.1$ ( $0.169 \pm 0.004$ )	$8.0 \pm 0.1$ ( $0.315 \pm 0.004$ )	$0.3 \pm 0.1$ ( $0.012 \pm 0.004$ )	$1.6 \pm 0.1$ ( $0.063 \pm 0.004$ )
MDMK4040					
MDWK4040					
MDPK5050	$5.25 \pm 0.1$ ( $0.207 \pm 0.004$ )	$5.25 \pm 0.1$ ( $0.207 \pm 0.004$ )	$8.0 \pm 0.1$ ( $0.315 \pm 0.004$ )	$0.3 \pm 0.1$ ( $0.012 \pm 0.004$ )	$1.6 \pm 0.1$ ( $0.063 \pm 0.004$ )

Unit : mm (inch)

#### ④ Leader and Blank portion



#### ⑤ Reel size



Type	Reel size (Reference values)		
	$\phi D$	$\phi d$	W
MDKK1616	$180 \pm 0.5$ ( $7.087 \pm 0.019$ )	$60 \pm 1.0$ ( $2.36 \pm 0.04$ )	$10.0 \pm 1.5$ ( $0.394 \pm 0.059$ )
MDJE2020			
MDKK2020			
MDMK2020			
MDKK3030	$180 \pm 3.0$ ( $7.087 \pm 0.118$ )	$60 \pm 2.0$ ( $2.36 \pm 0.08$ )	$14.0 \pm 1.5$ ( $0.551 \pm 0.059$ )
MDMK3030			
MDJE4040			
MDMK4040			
MDWK4040			
MDPK5050			

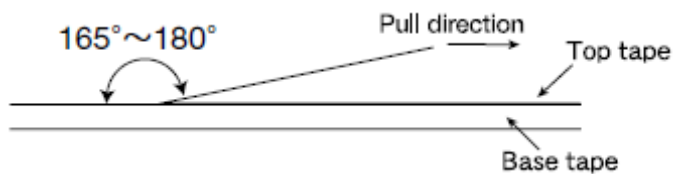
Unit : mm (inch)

► This catalog contains the typical specification only due to the limitation of space. When you consider the purchase of our products, please check our specification.  
For details of each product (characteristics graph, reliability information, precautions for use, and so on), see our Web site (<http://www.ty-top.com/>) .

## ⑥Top Tape Strength

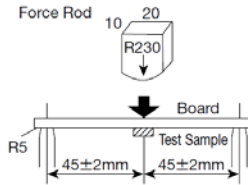
Top tape strength

Type	Peel-off strength
MDKK1616	0.1N~1.0N
MDJE2020	
MDKK2020	
MDMK2020	
MDKK3030	
MDMK3030	0.1N~1.3N
MDJE4040	
MDMK4040	
MDWK4040	
MDPK5050	



# METAL CORE SMD POWER INDUCTORS (MCOIL™ MD SERIES)

## RELIABILITY DATA

1. Operating Temperature Range		
Specified Value	MD series	−40~+125℃
Test Methods and Remarks	Including self-generated heat	
2. Storage Temperature Range		
Specified Value	MD series	−40~+85℃
Test Methods and Remarks	−5 to 40℃ for the product with taping.	
3. Rated current		
Specified Value	MD series	Within the specified tolerance
4. Inductance		
Specified Value	MD series	Within the specified tolerance
Test Methods and Remarks	Measuring equipment : LCR Meter (HP 4285A or equivalent) Measuring condition : Please see item list.	
5. DC Resistance		
Specified Value	MD series	Within the specified tolerance
Test Methods and Remarks	Measuring equipment : DC ohmmeter (HIOKI 3227 or equivalent)	
6. Self resonance frequency		
Specified Value	MD series	—
7. Temperature characteristic		
Specified Value	MD series	Inductance change : Within ±10%
Test Methods and Remarks	Measurement of inductance shall be taken at temperature range within −40℃~+125℃. With reference to inductance value at +20℃., change rate shall be calculated.	
8. Resistance to flexure of substrate		
Specified Value	MD series	No damage
Test Methods and Remarks	<div>The test samples shall be soldered to the test board by the reflow. As illustrated below, apply force in the direction of the arrow indicating until deflection of the test board reaches to 2 mm.</div> <div>Test board size : 100×40×1.0 mm</div> <div>Test board material : Glass epoxy-resin</div> <div>Solder cream thickness : 0.10 mm</div> <div></div>	
9. Insulation resistance : between wires		
Specified Value	MD series	—
10. Insulation resistance : between wire and core		
Specified Value	MD series	—
11. Withstanding voltage : between wire and core		
Specified Value	MD series	—

▶ This catalog contains the typical specification only due to the limitation of space. When you consider the purchase of our products, please check our specification.  
 For details of each product (characteristics graph, reliability information, precautions for use, and so on), see our Web site (<http://www.ty-top.com/>) .

12. Adhesion of terminal electrode																								
Specified Value		MD series		Shall not come off PC board																				
Test Methods and Remarks		The test samples shall be soldered to the test board by the reflow. Applied force : 10N to X and Y directions. Duration : 5s. Solder cream thickness : 0.10mm.																						
13. Resistance to vibration																								
Specified Value		MD series		Inductance change : Within ±10% No significant abnormality in appearance.																				
Test Methods and Remarks		The test samples shall be soldered to the test board by the reflow. Then it shall be submitted to below test conditions. <table><tr><td colspan="2">Frequency Range</td><td colspan="2">10~55Hz</td></tr><tr><td colspan="2">Total Amplitude</td><td colspan="2">1.5mm (May not exceed acceleration 196m/s<sup>2</sup>)</td></tr><tr><td colspan="2">Sweeping Method</td><td colspan="2">10Hz to 55Hz to 10Hz for 1min.</td></tr><tr><td rowspan="3">Time</td><td colspan="2">X</td><td rowspan="3">For 2 hours on each X, Y, and Z axis.</td></tr><tr><td colspan="2">Y</td></tr><tr><td colspan="2">Z</td></tr></table> Recovery : At least 2hrs of recovery under the standard condition after the test, followed by the measurement within 48hrs.			Frequency Range		10~55Hz		Total Amplitude		1.5mm (May not exceed acceleration 196m/s <sup>2</sup> )		Sweeping Method		10Hz to 55Hz to 10Hz for 1min.		Time	X		For 2 hours on each X, Y, and Z axis.	Y		Z	
Frequency Range		10~55Hz																						
Total Amplitude		1.5mm (May not exceed acceleration 196m/s <sup>2</sup> )																						
Sweeping Method		10Hz to 55Hz to 10Hz for 1min.																						
Time	X		For 2 hours on each X, Y, and Z axis.																					
	Y																							
	Z																							
14. Solderability																								
Specified Value		MD series		At least 90% of surface of terminal electrode is covered by new solder.																				
Test Methods and Remarks		The test samples shall be dipped in flux, and then immersed in molten solder as shown in below table. Flux : Methanol solution containing rosin 25%. <table><tr><td colspan="2">Solder Temperature</td><td colspan="2">245±5℃</td></tr><tr><td colspan="2">Time</td><td colspan="2">5±1.0 sec.</td></tr></table> ※Immersion depth : All sides of mounting terminal shall be immersed.			Solder Temperature		245±5℃		Time		5±1.0 sec.													
Solder Temperature		245±5℃																						
Time		5±1.0 sec.																						
15. Resistance to soldering heat																								
Specified Value		MD series		Inductance change : Within ±10% No significant abnormality in appearance.																				
Test Methods and Remarks		The test sample shall be exposed to reflow oven at 230±5℃ for 40 seconds, with peak temperature at 260±5℃ for 5 seconds, 2 times. Test board material : Glass epoxy-resin Test board thickness : 1.0mm																						
16. Thermal shock																								
Specified Value		MD series		Inductance change : Within ±10% No significant abnormality in appearance.																				
Test Methods and Remarks		The test samples shall be soldered to the test board by the reflow. The test samples shall be placed at specified temperature for specified time by step 1 to step 4 as shown in below table in sequence. The temperature cycle shall be repeated 100 cycles. <table><tr><td colspan="3">Conditions of 1 cycle</td></tr><tr><td>Step</td><td>Temperature (℃)</td><td>Duration (min)</td></tr><tr><td>1</td><td>－40±3</td><td>30±3</td></tr><tr><td>2</td><td>Room temperature</td><td>Within 3</td></tr><tr><td>3</td><td>+85±2</td><td>30±3</td></tr><tr><td>4</td><td>Room temperature</td><td>Within 3</td></tr></table>			Conditions of 1 cycle			Step	Temperature (℃)	Duration (min)	1	－40±3	30±3	2	Room temperature	Within 3	3	+85±2	30±3	4	Room temperature	Within 3		
Conditions of 1 cycle																								
Step	Temperature (℃)	Duration (min)																						
1	－40±3	30±3																						
2	Room temperature	Within 3																						
3	+85±2	30±3																						
4	Room temperature	Within 3																						
17. Damp heat																								
Specified Value		MD series		Inductance change : Within ±10% No significant abnormality in appearance.																				
Test Methods and Remarks		The test samples shall be soldered to the test board by the reflow. The test samples shall be placed in thermostatic oven set at specified temperature and humidity as shown in below table. <table><tr><td colspan="2">Temperature</td><td colspan="2">60±2℃</td></tr><tr><td colspan="2">Humidity</td><td colspan="2">90~95%RH</td></tr><tr><td colspan="2">Time</td><td colspan="2">500+24/－0 hour</td></tr></table>			Temperature		60±2℃		Humidity		90~95%RH		Time		500+24/－0 hour									
Temperature		60±2℃																						
Humidity		90~95%RH																						
Time		500+24/－0 hour																						

18. Loading under damp heat		
Specified Value	MD series	Inductance change : Within $\pm 10\%$ No significant abnormality in appearance.
Test Methods and Remarks	The test samples shall be soldered to the test board by the reflow. The test samples shall be placed in thermostatic oven set at specified temperature and humidity and applied the rated current continuously as shown in below table.	
	Temperature	$60 \pm 2^{\circ}\text{C}$
	Humidity	$90 \sim 95\% \text{RH}$
	Applied current	Rated current
	Time	$500 + 24 / - 0$ hour
19. Low temperature life test		
Specified Value	MD series	Inductance change : Within $\pm 10\%$ No significant abnormality in appearance.
Test Methods and Remarks	The test samples shall be soldered to the test board by the reflow. After that, the test samples shall be placed at test conditions as shown in below table.	
	Temperature	$-40 \pm 2^{\circ}\text{C}$
	Time	$500 + 24 / - 0$ hour
20. High temperature life test		
Specified Value	MD series	—
21. Loading at high temperature life test		
Specified Value	MD series	Inductance change : Within $\pm 10\%$ No significant abnormality in appearance.
Test Methods and Remarks	The test samples shall be soldered to the test board by the reflow. The test samples shall be placed in thermostatic oven set at specified temperature and applied the rated current continuously as shown in below table.	
	Temperature	$85 \pm 2^{\circ}\text{C}$
	Applied current	Rated current
	Time	$500 + 24 / - 0$ hour
22. Standard condition		
Specified Value	MD series	Standard test condition : Unless otherwise specified, temperature is $20 \pm 15^{\circ}\text{C}$ and $65 \pm 20\%$ of relative humidity. When there is any question concerning measurement result: In order to provide correlation data, the test shall be condition of $20 \pm 2^{\circ}\text{C}$ of temperature, $65 \pm 5\%$ relative humidity. Inductance is in accordance with our measured value.

# METAL CORE SMD POWER INDUCTORS (MCOIL™ MD SERIES)

## ■ PRECAUTIONS

1. Circuit Design	
Precautions	<p>◆Operating environment</p> <ol style="list-style-type: none"> <li>The products described in this specification are intended for use in general electronic equipment,(office supply equipment, telecommunications systems, measuring equipment, and household equipment). They are not intended for use in mission-critical equipment or systems requiring special quality and high reliability (traffic systems, safety equipment, aerospace systems, nuclear control systems and medical equipment including life-support systems,) where product failure might result in loss of life, injury or damage. For such uses, contact TAIYO YUDEN Sales Department in advance.</li> </ol>
2. PCB Design	
Precautions	<p>◆Land pattern design</p> <ol style="list-style-type: none"> <li>Please refer to a recommended land pattern.</li> </ol>
Technical considerations	<p>◆Land pattern design</p> <p>Surface Mounting</p> <ul style="list-style-type: none"> <li>Mounting and soldering conditions should be checked beforehand.</li> <li>Applicable soldering process to this products is reflow soldering only.</li> </ul>
3. Considerations for automatic placement	
Precautions	<p>◆Adjustment of mounting machine</p> <ol style="list-style-type: none"> <li>Excessive impact load should not be imposed on the products when mounting onto the PC boards.</li> <li>Mounting and soldering conditions should be checked beforehand.</li> </ol>
Technical considerations	<p>◆Adjustment of mounting machine</p> <ol style="list-style-type: none"> <li>When installing products, care should be taken not to apply distortion stress as it may deform the products.</li> </ol>
4. Soldering	
Precautions	<p>◆Reflow soldering</p> <ol style="list-style-type: none"> <li>Please contact any of our offices for a reflow soldering, and refer to the recommended condition specified.</li> <li>The product shall be used reflow soldering only.</li> <li>Please do not add any stress to a product until it returns in normal temperature after reflow soldering.</li> </ol> <p>◆Lead free soldering</p> <ol style="list-style-type: none"> <li>When using products with lead free soldering, we request to use them after confirming adhesion, temperature of resistance to soldering heat, soldering etc sufficiently.</li> </ol> <p>◆Recommended conditions for using a soldering iron (NR10050 Type)</p> <ul style="list-style-type: none"> <li>Put the soldering iron on the land-pattern.</li> <li>Soldering iron's temperature – Below 350°C</li> <li>Duration – 3 seconds or less</li> <li>The soldering iron should not directly touch the inductor.</li> </ul>
Technical considerations	<p>◆Reflow soldering</p> <ol style="list-style-type: none"> <li>If products are used beyond the range of the recommended conditions, heat stresses may deform the products, and consequently degrade the reliability of the products.</li> </ol> <p>•NR30/40/50/60/80, NRV20/30, NRH24/30, NRS20/40/50/60/80 Type, NR10050 Type, NS101/125 Type</p> <p>Recommended reflow condition (Pb free solder)</p> <p>Temperature [°C]</p> <p>Heating Time [sec]</p> <p>150~180</p> <p>90±30sec</p> <p>30±10sec</p> <p>230°C min</p> <p>5sec max</p> <p>Peak: 250+5/-0°C</p>
5. Cleaning	
Precautions	<p>◆Cleaning conditions</p> <ol style="list-style-type: none"> <li>Washing by supersonic waves shall be avoided.</li> </ol>
Technical considerations	<p>◆Cleaning conditions</p> <ol style="list-style-type: none"> <li>If washed by supersonic waves, the products might be broken.</li> </ol>

6. Handling	
Precautions	<ul style="list-style-type: none"> <li>◆Handling               <ol style="list-style-type: none"> <li>1. Keep the product away from all magnets and magnetic objects.</li> </ol> </li> <li>◆Breakaway PC boards (splitting along perforations)               <ol style="list-style-type: none"> <li>1. When splitting the PC board after mounting product, care should be taken not to give any stresses of deflection or twisting to the board.</li> <li>2. Board separation should not be done manually, but by using the appropriate devices.</li> </ol> </li> <li>◆Mechanical considerations               <ol style="list-style-type: none"> <li>1. Please do not give the product any excessive mechanical shocks.</li> <li>2. Please do not add any shock and power to a product in transportation.</li> </ol> </li> <li>◆Pick-up pressure               <ol style="list-style-type: none"> <li>1. Please do not push to add any pressure to a winding part. Please do not give any shock and push into a ferrite core exposure part.</li> </ol> </li> <li>◆Packing               <ol style="list-style-type: none"> <li>1. Please avoid accumulation of a packing box as much as possible.</li> </ol> </li> <li>◆Board mounting               <ol style="list-style-type: none"> <li>1. There shall be no pattern or via between terminals at the bottom of product.</li> <li>2. Components which are located in peripheral of product shall not make contact with surface (top, side) of product.</li> </ol> </li> </ul>
Technical considerations	<ul style="list-style-type: none"> <li>◆Handling               <ol style="list-style-type: none"> <li>1. There is a case that a characteristic varies with magnetic influence.</li> </ol> </li> <li>◆Breakaway PC boards (splitting along perforations)               <ol style="list-style-type: none"> <li>1. The position of the product on PCBs shall be carefully considered to minimize the stress caused from splitting of the PCBs.</li> </ol> </li> <li>◆Mechanical considerations               <ol style="list-style-type: none"> <li>1. There is a case to be damaged by a mechanical shock.</li> <li>2. There is a case to be broken by the handling in transportation.</li> </ol> </li> <li>◆Pick-up pressure               <ol style="list-style-type: none"> <li>1. Damage and a characteristic can vary with an excessive shock or stress.</li> </ol> </li> <li>◆Packing               <ol style="list-style-type: none"> <li>1. If packing boxes are accumulated, that could cause a deformation on packing tapes or a damage on the products.</li> </ol> </li> <li>◆Board mounting               <ol style="list-style-type: none"> <li>1. If there is pattern or via between terminals at the bottom of product, it may cause characteristics change.</li> <li>2. If components which are located in peripheral of product make contact with surface (top, side) of product, it may cause damage or characteristics change.</li> </ol> </li> </ul>
7. Storage conditions	
Precautions	<ul style="list-style-type: none"> <li>◆Storage               <ol style="list-style-type: none"> <li>1. To maintain the solderability of terminal electrodes and to keep the packing material in good condition, temperature and humidity in the storage area should be controlled.                   <ul style="list-style-type: none"> <li>▪ Recommended conditions                       <ul style="list-style-type: none"> <li>Ambient temperature : <math>-5\sim 40^{\circ}\text{C}</math></li> <li>Humidity : Below 70% RH</li> </ul> </li> <li>▪ The ambient temperature must be kept below <math>30^{\circ}\text{C}</math>. Even under ideal storage conditions, solderability of products electrodes may decrease as time passes.</li> </ul> </li> </ol> </li> </ul> <p style="margin-left: 40px;">For this reason, product should be used within 6 months from the time of delivery. In case of storage over 6 months, solderability shall be checked before actual usage.</p>
Technical considerations	<ul style="list-style-type: none"> <li>◆Storage               <ol style="list-style-type: none"> <li>1. Under a high temperature and humidity environment, problems such as reduced solderability caused by oxidation of terminal electrodes and deterioration of taping/packaging materials may take place.</li> </ol> </li> </ul>