



Important notes about Classic Panel Mount Indicator Catalog Pages

SCROLL DOWN TO VIEW CATALOG PAGE

This catalog page is out-of-print and is used with the understanding that the information shown could be out-of-date. In many cases, part numbers shown on this page are discontinued. Most notably, many "Complete Assembly" parts, which consist of a cap and a base, can no longer be ordered by the 14-digit ordering code. To obtain these parts, please order the cap and base part numbers separately. This process provides the components contained with the original "Complete Assembly" part number.

All Dialight Classic Panel Mount Indicators need a leading 3-digit numerical series. In some cases, this catalog will show a 2-digit series. In this case, please add a leading zero. For example, 81-0211-300 becomes 081-0211-300.

Part numbers listed on Dialight catalog pages designate parts with Red lenses. For ordering lens colors other than red, consult the chart below. In most cases, the color is dictated by the 7th digit. For example, 095-0932-003 for a green cap.

Lens Colors	
1 - Red	5 - White
2 - Green	6 - Light Yellow
3 - Yellow	7 - Clear
4 - Blue	

[Click here for a cross reference guide to assembly part numbers.](#)

[Click here to view Frequently Asked Questions concerning Panel Mount Indicators.](#)

SCROLL DOWN TO VIEW CATALOG PAGE

Light Shield Incandescent Indicators



T-1 3/4
MIDGET
FLANGE BASE

See lamp ratings
on page J.

ONE TERMINAL – FULLY INSULATED for use on grounded circuits.

FOR FRONT MOUNTING IN 15/32" CLEARANCE HOLE

MEET OR EXCEED ENVIRONMENTAL AND OPERATIONAL REQUIREMENTS
OF MIL-L-7806 AND MIL-L-3661

An opening in the side of the metal lamp holder emits light on the panel to illuminate dials or controls. The usual opening is 1/4" X 5/32". The 113 series has a molded colored filter to provide a colored light†.

How to designate the Three Digit Part Number Suffix (–XXX)
(4 Series only)

Finish	Resistor	Hardware
1—white nickel	0—none	1 — brass
2—black nickel		3 — water tight on face of panel (113 Series only)
3—polished chrome		7 — insulated mounting*

Example: 4-1930-2900-101 (white nickel finish, no resistor, brass hardware).

† For 2 terminal requirements, assembly is supplied with 2 insulating washers and a lug. Mounting hole becomes 9/16".

MATERIALS AND FINISHES

- **Mounting Bushing:** Standard— Brass, black nickel finish. Optional, (4 series only)— Polished chrome or white nickel finish.
- **Mounting Nut:** Brass, white nickel finish.
- **Internal-tooth Lockwasher:** Phosphor bronze, white nickel finish.
- **Terminals:** Soldering— Brass, hot tin dip. Screw— Brass, cadmium plated with yellow iridescent chromate finish.
- **Insulation:** Per MIL-L-7806.

4 SERIES 113 SERIES



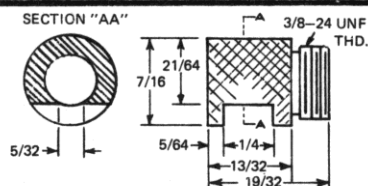
4-1930-2900-201 (without filter)



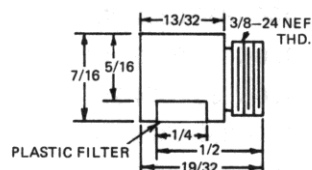
113-1830-2931-201 (with molded filter)

BASE PART NUMBERS

CAP PART NUMBERS

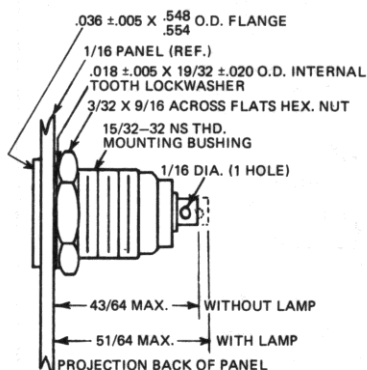


4-2900-200 (without filter)



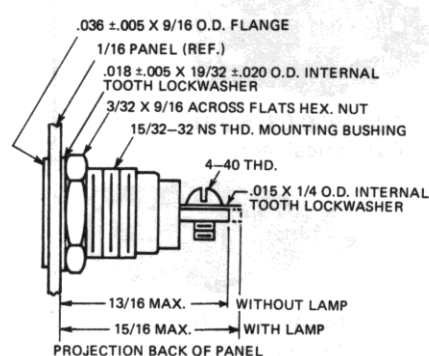
113-2931-200 (with molded filter)

solder terminal



4-1930-29-201

screw terminal



4-1830-29-201

COMPLETE ASSEMBLY PART NUMBERS

4-1930-2900-201

4-1830-2900-201

113-1930-2931-201

113-1830-2931-201

***Filter colors:** The digit before the three digit part number suffix indicates that the filter is RED. When a color other than red is desired, change this digit as follows:
Red—1; Green—2; Yellow (amber)—3; Blue—4; Clear (colorless)—7.
Example: 113-1930-2934-201 (Blue).

Part numbers shown in gray are normally in inventory at your Dialight Distributor.

Mouser Electronics

Authorized Distributor

Click to View Pricing, Inventory, Delivery & Lifecycle Information:

Dialight:

[113-2937-203](#) [113-2931-200](#) [004-1930-29-207](#) [113-2931-203](#) [004-1830-29-207](#) [113-2937-200](#) [113-2934-203](#) [004-1830-29-301](#) [113-2932-200](#) [113-2934-200](#) [004-1830-29-200](#) [004-1830-29-201](#) [004-1830-29-203](#) [004-1830-29-300](#)
[004-1930-29-200](#) [004-1930-29-201](#) [004-1930-29-203](#) [004-2900-300](#)