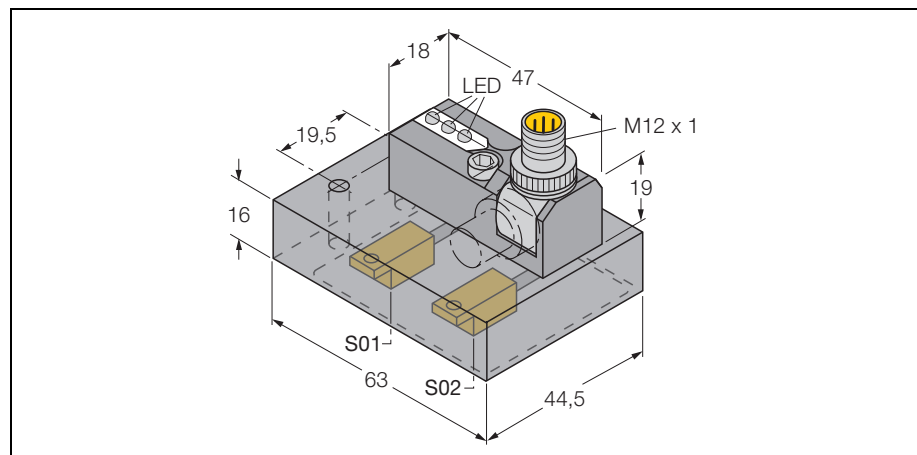


**inductive sensor**  
**power clamp monitor**  
**Ni2-ISI-0,055-BDS-2AP6X3-H1141/S34 w/MS-ISI-2**

**TURCK**  
*works*

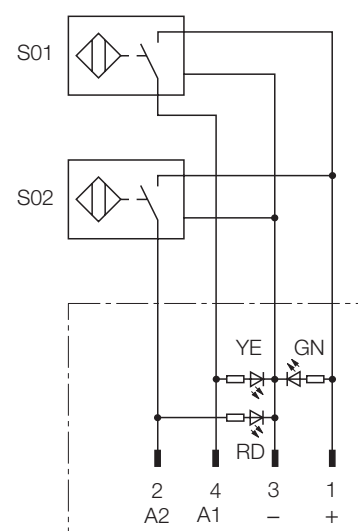
Industrial  
Automation



<b>Type</b>	Ni2-ISI-0,055-BDS-2AP6X3-H1141/S34 w/MS-ISI-2
Ident-No.	1650131
<b>Rated operating distance Sn</b>	2 mm
Mounting condition	non-flush
Assured switching distance	$\leq (0,81 \times S_n)$ mm
Correction factors	St37 = 1, V2A ~ 0.7, Ms ~ 0.4, Al ~ 0.3
Temperature drift	$\leq \pm 10 \%$
Hysteresis	3... 15 %
Repeatability	$\leq 2 \%$
Ambient temperature	-25...+ 70 °C
<b>Operating voltage</b>	10... 30 VDC
Residual ripple	$\leq 10 \% U_{ss}$
DC rated operational current	$\leq 200$ mA
No-load current $I_0$	$\leq 15$ mA
Residual current	$\leq 0.1$ mA
Rated insulation voltage	$\leq 0.5$ kV
Short-circuit protection	yes / thermal
Voltage dip at $I_e$	$\leq 1.8$ V
Wire breakage / Reverse polarity protection	yes / complete
Output function	4-wire, normally open, pnp
Switching frequency	$\leq 0.03$ kHz
<b>Housing</b>	monitoring kit for clamping technology, ISI
Dimensions	63 x 44.5 x 18 mm
Housing material	plastic, PBT-GF30-V0
Material active area	plastic, PA12-GF20
Connection	Connector, M12 x 1
Cable quality	Ø 2, grey, Lif9Y-11Y, PUR, 0.055 m
Cable cross section:	3 x 0.08 mm <sup>2</sup>
Litz wire	40 x 0.05 mm <sup>2</sup>
Vibration resistance	55 Hz (1 mm)
Shock resistance	30g (11 ms)
Degree of protection	IP67
<b>Operating voltage display</b>	LED green
Display switch state	2 x LED yellow / red

- power block BDS with two connected sensors and LEDs
- robust rotatable connector - 0°, 45° and 90° - for optimal cable routing
- Plastic, PBT-GF20-V0
- magnetic field immunity (welding resistance) to DC and AC fields
- 2 x normally open, pnp output
- 4-wire DC, 10...30 VDC

#### Wiring diagram



#### Functional principle

TURCK offers special monitoring kits, consisting of two miniature sensors, as a convenient solution for "Open/Closed" detection on pneumatic power clamps. This product line provides almost unlimited combination possibilities, comprising four different power blocks and over forty different modular sensor types.