

PLEASE CHECK WWW.MOLEX.COM FOR LATEST PART INFORMATION

Part Number: [0622018623](#)
Status: **Active**
Description: Press-In Tool, GbX I-Trac™ Right Angle Receptacle 15 Row, 9 Column

Documents:
[RoHS Certificate of Compliance \(PDF\)](#)

General

Product Family	Application Tooling
Series	T3002
Comments	See Tooling Specification (PDF) Above, Press-In Tool
Function	Insertion
Geographic Area	Global
Level of Automation	Manual
More Detailed Tech Information	applicationtooling@molex.com
Product Name	PremiumGrade™
Survey	www.molex.com/review/apptool_survey.html
Tool Type	Handtool

Material Info

Reference - Drawing Numbers

Application Tooling Documents ATS-622018623, TM-622018699, TM-622022099

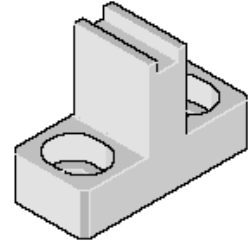


image - Reference only

Series

EU RoHS China RoHS

Compliance Status

Not Reviewed

REACH SVHC

Not Reviewed

Low-Halogen Status

Not Reviewed

Need more information on product environmental compliance?

Email productcompliance@molex.com
For a multiple part number RoHS Certificate of Compliance, [click here](#)

Please visit the [Contact Us](#) section for any non-product compliance questions.

Search Parts in this Series

T3002Series

Use With

GbX I-Trac™ Daughtercard Signal Module, 76040 Series

Application Tooling Description	FAQ Product #
---------------------------------	---------------

1.85mm by 3.70mm (.073" by .146") Pitch, GbX I-Trac™ Right Angle Receptacle Module, Left Guide, 15 Rows, 9 Columns, 270 Circuits, With ESD Clips	0760402058
--	------------

1.85mm by 3.70mm (.073" by .146") Pitch, GbX I-Trac™ Right Angle Receptacle Module, Left Guide, 15 Rows, 9 Columns, 270	0760403058
---	------------

Circuits, Lead Free,
With ESD Clips
1.85mm by 3.70mm 0760401009
(.073" by .146")
Pitch, GbX I-
Trac™ Right Angle
Receptacle Module,
Unguided, 15 Rows,
9 Columns, 270
Circuits
1.85mm by 3.70mm 0760403009
(.073" by .146")
Pitch, GbX I-
Trac™ Right Angle
Receptacle Module,
Left Guide, 15 Rows,
9 Columns, 270
Circuits
1.85mm by 3.70mm 0760403109
(.073" by .146")
Pitch, GbX I-
Trac™ Right Angle
Receptacle Module,
Left Guide, 15 Rows,
9 Columns, 270
Circuits
1.85mm by 3.70mm 0760405009
(.073" by .146")
Pitch, GbX I-
Trac™ Right Angle
Receptacle Module,
Right Guide, 15
Rows, 9 Columns,
270 Circuits
1.85mm by 3.70mm 0760405109
(.073" by .146")
Pitch, GbX I-
Trac™ Right Angle
Receptacle Module,
Right Guide, 15
Rows, 9 Columns,
270 Circuits

This document was generated on 02/23/2011

PLEASE CHECK WWW.MOLEX.COM FOR LATEST PART INFORMATION