

PLEASE CHECK WWW.MOLEX.COM FOR LATEST PART INFORMATION

Part Number: [0190160010](#)
Status: **Active**
Description: Krimptite™ Quick Disconnect, Female, for 18-22 (0.80-0.35) Wire, Mylar Tape, Tab 6.35mm (.250") x 0.81mm (.032")

Documents:

[Drawing \(PDF\)](#) [RoHS Certificate of Compliance \(PDF\)](#)

Agency Certification

CSA LR18689
UL E79133

General

Product Family Quick Disconnects
Series [19016](#)
Comments Butted Seam
Crimp Quality Equipment Yes
Product Name Krimptite™
Type Quick Disconnect

Physical

Barrel Type Closed
Gender Female
Glow-Wire Compliant No
Insulation None
Lock to Mating Part None
Material - Metal Brass
Orientation Straight
Packaging Type Adhesive Tape on Reel
Polarized to Mating Part No
Tab Thickness 0.81mm (.032")
Tab Width 6.35mm (.250")
Temperature Range - Operating Per Wire Specification
Wire Size AWG 18, 20, 22
Wire Size mm² 0.35 - 0.80

Electrical

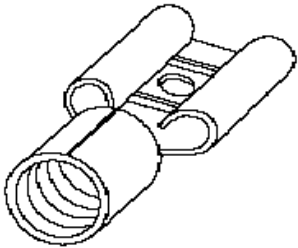
Voltage - Maximum Per Wire Specification

Material Info

Old Part Number AA-1140T

Reference - Drawing Numbers

Sales Drawing CD1905



*Series
image - Reference only*

EU RoHS

**ELV and RoHS
Compliant**
REACH SVHC
Contains SVHC: No
Halogen-Free
Status
Not Reviewed

China RoHS



**Need more information on product
environmental compliance?**

Email productcompliance@molex.com
For a multiple part number RoHS Certificate of
Compliance, [click here](#)

Please visit the [Contact Us](#) section for any
non-product compliance questions.

Search Parts in this Series

[19016Series](#)

Application Tooling | [FAQ](#)

*Tooling specifications and manuals are
found by selecting the products below.
Crimp Height Specifications are then
contained in the Application Tooling
Specification document.*

Global

Description	Product #
ATP Perishable	0190270037
Tool Kit used in ATP presses that process product on tape	

6

5

4

3

2

1

DRWG. NO.

CD-1905

PART NUMBERS ARE FOR LOOSE PIECE TO ORDER PARTS ON TAPE ADD A "T" TO END OF PART NUMBER

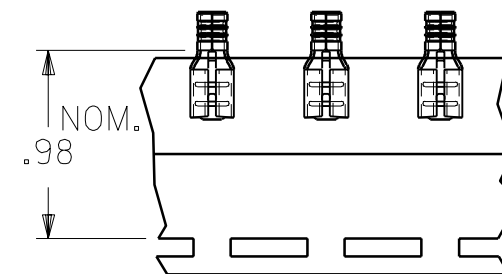
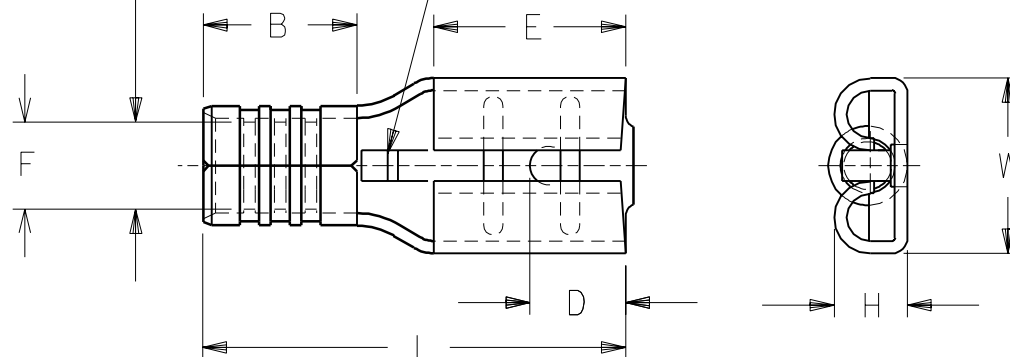
D

PART NUMBER	WIRE RANGE AWG MM ²	FITS MALE TAB SIZE	STOCK THICK.	"L" MAX.	"B" ±.01	"W" MAX.	"D" ±.01	"H" ±.01	"E" NOM.	"F" MIN	
AA-1140	22-18 0.25-1.3	.250x.032	.016	.66	.190	.30	.156	.103	.31	Ø.062	

D

WIRE RANGE

WIRE STOP



PARTS ON TAPE

MATERIAL: BRASS
FINISH: ELECTRO-TIN PLATING

C

B

A

A

RELEASE OF NEW
CUSTOMER DWG
ETC70766 3/25 EDB

LTR.

REVISIONS

DIMENSIONS SHOWN (METRIC) INCH

UNLESS OTHERWISE SPECIFIED
TOLERANCES: ANGULAR ± 1/2°

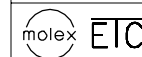
	INCH	METRIC
3 PLACE	± .005	± ---
2 PLACE	± .01	± 0.13
1 PLACE	± ---	± 0.25

DRAFT WHERE APPLICABLE MUST
REMAIN WITHIN DIMENSIONS

DRWG. BY	EDB	CHK'D. BY	RWD
APP'D. BY	RWD	SCALE	:

REVISE ONLY ON CAD SYSTEM

TITLE

KRIMPTITE
QUICK DISCONNECT
AA-1140 22-18 AWG

ETC INC.

PINELLAS PARK, FLA. 33781 U.S.A.

SHEET NO.

DATE

97 / 3/24

PART NO.

AA-1140

DRWG. NO.

CD-1905

FILE NAME
CD1905
CSTTHIS DRAWING CONTAINS INFORMATION THAT IS PROPRIETARY TO
MOLEX-ETC INC. AND SHOULD NOT BE USED WITHOUT WRITTEN PERMISSION.

DIV.

SIZE
A

6

5

4

3

2

1