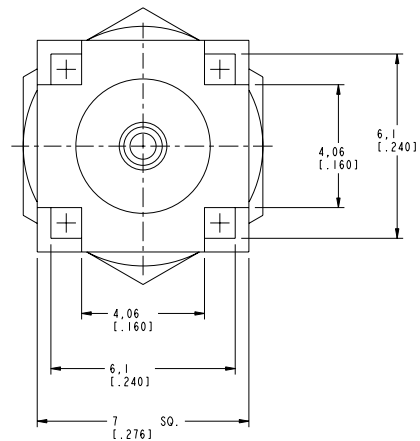
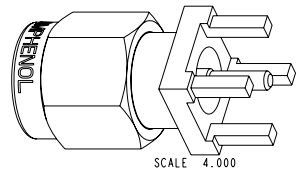
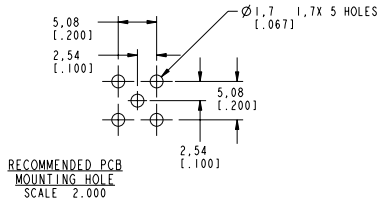
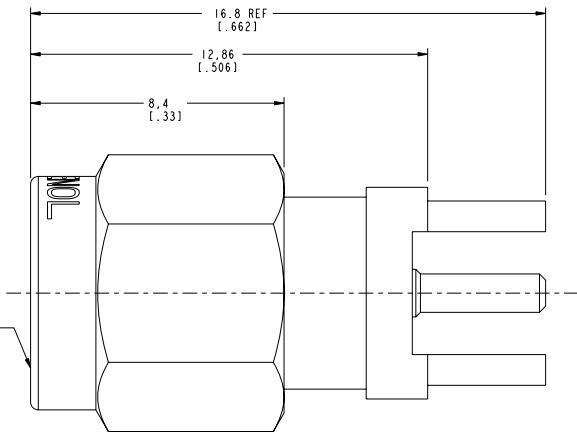


NOTES:

- I. MATERIALS OF CONSTRUCTION:  
BODY, RING & SHELL = BRASS, GOLD PLATED  
CONTACT PIN = BRASS, GOLD PLATED  
RETAINER RING = B2Cu, NATURAL  
INSULATORS (2) = TEFLON, PER MIL-P-19468  
GASKET = SILICONE RUBBER, COLOR RED



**CUSTOMER OUTLINE DRAWING**  
ALL OTHER SHEETS ARE FOR INTERNAL USE ONLY

UNLESS OTHERWISE SPECIFIED, DIMENSIONS ARE IN MM (INCHES) AND TOLERANCES ARE: 0.5 - 6mm ±0.2mm	MATERIAL  REFERENCE EAR 967689-0 GEN# 910-144-8RFX.ASSY	DRAWN C. McGRATH	DATE 1/10/01	TITLE  SMA PCB MOUNT PLUG	Amphenol Corporation Communication and Network Products Division Danbury, CT U.S.A. 06810 SCALE: 8:0:1	SHEET 2 OF 2	REV B
		ENGINEER O. BARTHELMES	DATE 1/10/01				
		APPROVED O. BARTHELMES	DATE 1/25/01				
NOTICE - These drawings, specifications, or other data (1) are, and remain the property of Amphenol Corp. (2) must be returned upon request; and (3) are confidential and not to be disclosed to any person other than those to whom they are given by Amphenol Corp. The furnishing of these drawings, specifications, or other data by Amphenol Corp., or to any other person to anyone for any purpose is not to be regarded by implication or otherwise in any manner licensing, granting rights or permitting such holder or any other person to manufacture, use or sell any product, process or design, patented or otherwise, that may in any way be related to or disclosed by said drawings, specifications, or other data.		CAD FILE 1: SMA 901-9895-RFX	CODE ID 74868	DWG SIZE B	DRAWING NO. 901-9895-RFX		

901-9895-RFX		REVISIONS			
DRAWING NO.	REV	DESCRIPTION	DATE	ECO	APPR
THIRD ANGLE PROJ.	A	RELEASE TO MFG.	1/25/01	43650	CPM
	B	CHGE Ø HOLES FROM 4 TO 5 OF .067	6/21/07	46595	TC