

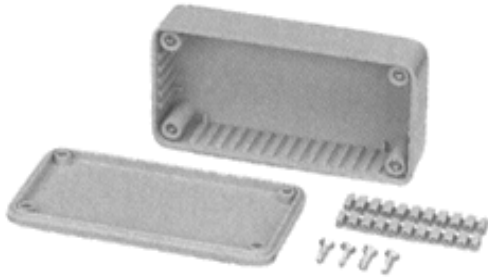
Order code	Manufacturer code	Description
30-3706	2002/12 GY/GY	BOX GREY ABS 100X50X25 (RC)
30-3708	2003/13 GY/GY	BOX GREY ABS 112X62X31 (RC)
30-3710	2004/14 GY/GY	BOX GREY ABS 120X65X40 (RC)
30-3712	2005/15 GY/GY	BOX GREY ABS 150X80X50 (RC)
30-3714	2006/16 GY/GY	BOX GREY ABS 190X110X60 (RC)
30-3730	BIM2003/13 LUG-GY/GY	BOX GREY ABS WITH LUGS 112X62X31 (RC)
30-3732	BIM2004/14 LUG-GY/GY	BOX GREY ABS WITH LUGS 120X65X40 (RC)
30-3734	BIM2005/15 LUG-GY/GY	BOX GREY WITH LUGS 150X80X50 (RC)
30-3740	BIM2002/22 GY/CLR	BOX GREY ABS 100X50X40 - CLEAR LID (RC)
30-3742	BIM2004/24 GY/CLR	BOX GREY ABS 120X65X60 - CLEAR LID (RC)
30-3744	BIM2005/25 GY/CLR	BOX GREY ABS 150X80X76 - CLEAR LID (RC)
30-3746	BIM2006/26 GY/CLR	BOX GREY ABS 190X110-90 - CLEAR LID (RC)

	Page 1 of 3
The enclosed information is believed to be correct, Information may change 'without notice' due to product improvement. Users should ensure that the product is suitable for their use. E. & O. E.	Revision A 04/07/2003

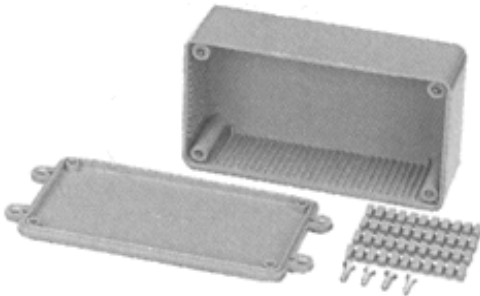
## Cases



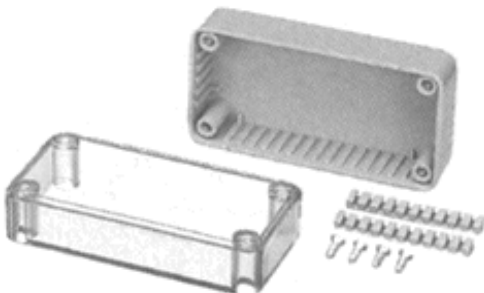
### **Boss BIM2000 Series – Multipurpose ABS Cases**



High quality, multipurpose ABS boxes available in a range of sizes. The boxes can be readily drilled and can withstand temperatures of up to 85°C. All sizes incorporate slots on four internal faces for vertically mounting 1.5mm thick PCBs, and are supplied with slotted adapter bars, which allow horizontal mounting. The close fitting, flanged lids are secured by screws (supplied) running into threaded bushes in the base.

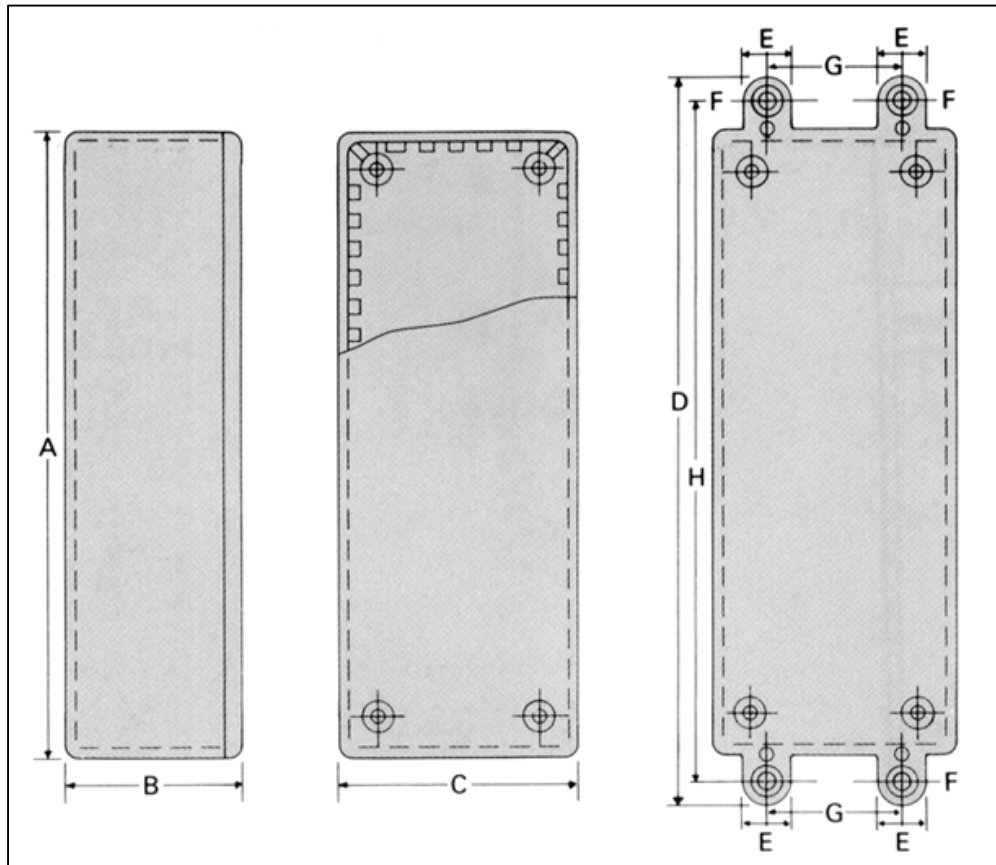


As above but with mounting lugs moulded into the lid. The lugs accept M3 countersunk screws, and allow the box to be mounted on to a wall or panel with the lid retaining screws hidden for limited tamperproofing.



As the range at the top of the page but with clear lids. Suitable for applications where the contents of the box need to be seen during operation but whilst retaining the protection of having a lid. Ideal for display and demonstration work, prototypes, development and education, where the contents of the box can be seen but not interfered with.

## Dimensions:



## Standard Type

Boss Part No.	Dimensions (mm)		
	A	B	C
2002/12 GY/GY	100	25	50
2003/13 GY/GY	112	31	62
2004/14 GY/GY	120	40	65
2005/15 GY/GY	150	50	80
2006/16 GY/GY	190	60	110

## Lugged Version

Boss Part No.	Dimensions (mm)				
	D	E	F	G	H
2003/13 LUG/GY	132	10	3.4	30	121
2004/14 LUG/GY	140	10	3.4	33	129
2005/15 LUG-GY	185	12	4.5	48	161

## Clear Lid Version

Boss Part No.	Dimensions (mm)		
	A	B	C
2002/22 GY/CLR	100	40	50
2004/24 GY/CLR	120	60	65
2005/25 GY/CLR	150	76	80
2006/26 GY/CLR	190	90	110