

AC Filter, High Symmetrical Attenuation

new



Bolt and nut M4 Case PK

Quick connect terminals 6.3x0.8 mm Case PG

Wire leads Case PI



### Description

- Line-filter in standard version
- 1-stage
- high attenuation
- 3 designs
  - N) excellent symmetrical noise attenuation
  - P) high symmetrical noise attenuation
  - Q) standard symmetrical noise attenuation

### Unique Selling Proposition

- Excellent symmetrical attenuation
- Compact and cost optimized
- Completely closed steel housing
- Optional wire leads

### Approvals

- VDE Certificate Number: 40041643
- UL File Number: E72928

### Characteristics

- Compact filter with high symmetrical attenuation
- Designed for universal industrial applications
- Especially designed for applications with symmetrical noise caused by switching semiconductors
- Suitable for use in equipment according to IEC/UL 60950
- Suitable for use in medical equipment according to IEC/UL 60601-1

### Other versions on request

- Version with wire connection

### Weblinks

[pdf-datasheet](#), [html-datasheet](#), [General Product Information](#), [Approvals](#), [CE declaration of conformity](#), [RoHS](#), [CHINA-RoHS](#), [REACH](#), [Distributor-Stock-Check](#), [Detailed request for product](#)

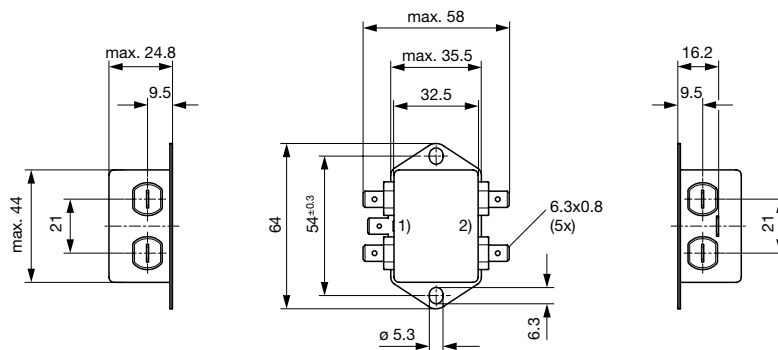
### Technical Data

|                           |   |
|---------------------------|---|
| Ratings IEC               | 1 - 60A @ Ta 40 °C / 250VAC; 50Hz   |
| Ratings UL/CSA            | 1 - 60A @ Ta 40 °C / 125/250VAC;<br>60Hz                                  |
| Leakage Current           | industrial < 1mA (250V / 60Hz)  |
| Dielectric Strength       | > 1.7kVDC between L-N<br>> 2.7kVDC between L/N-PE<br>Test voltage (2 sec) |
| Allowable Operation Temp. | -40 °C to 100 °C  |
| Climatic Category         | 40/100/21 acc. to IEC 60068-1   |
| Protection Class          | Suitable for appliances with protection class I acc. to IEC 61140         |
| Terminal                  | Quick connect terminal 6.3 x 0.8 mm<br>Bolt and nut                       |
| Material: Housing         | Metal   |

|             |  |
|-------------|--|
| Line Filter | Standard, medical and industrial version, IEC 60939, UL 1283, CSA C22.2 no. 8<br><a href="#">Technical Details</a> |
| MTBF        | > 200'000h acc. to MIL-HB-217 F  |

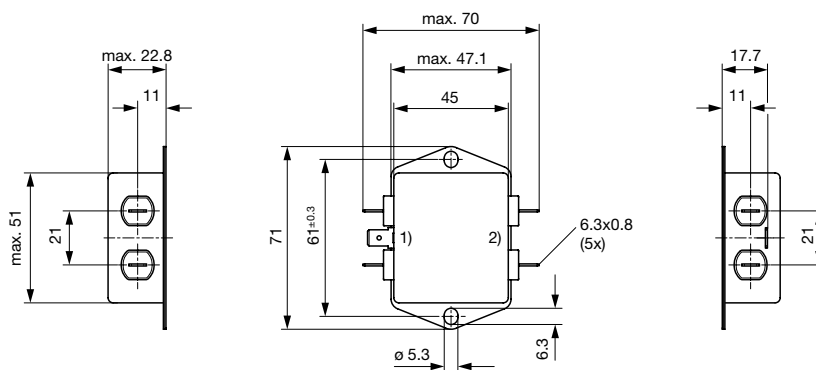
## Dimension

Case PG with quick connect terminals



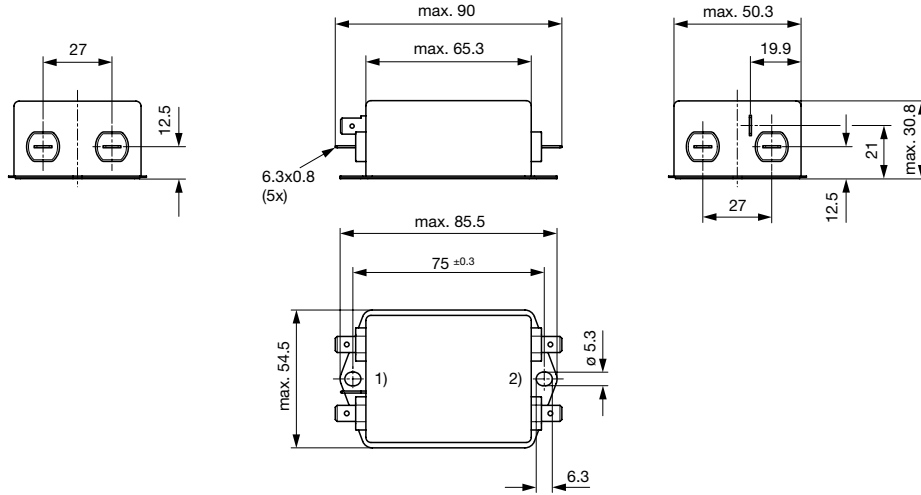
- 1) Line
- 2) Load

Case PH with quick connect terminals



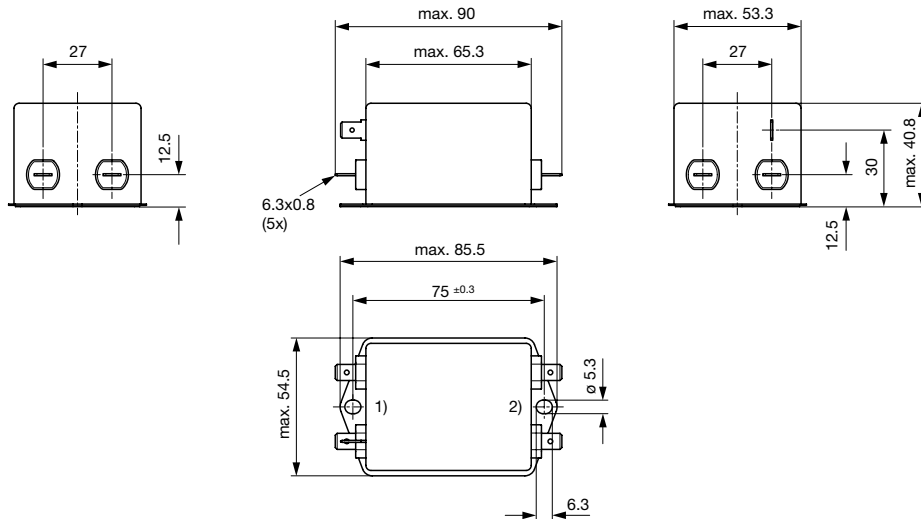
- 1) Line
- 2) Load

Case PI with quick connect terminals



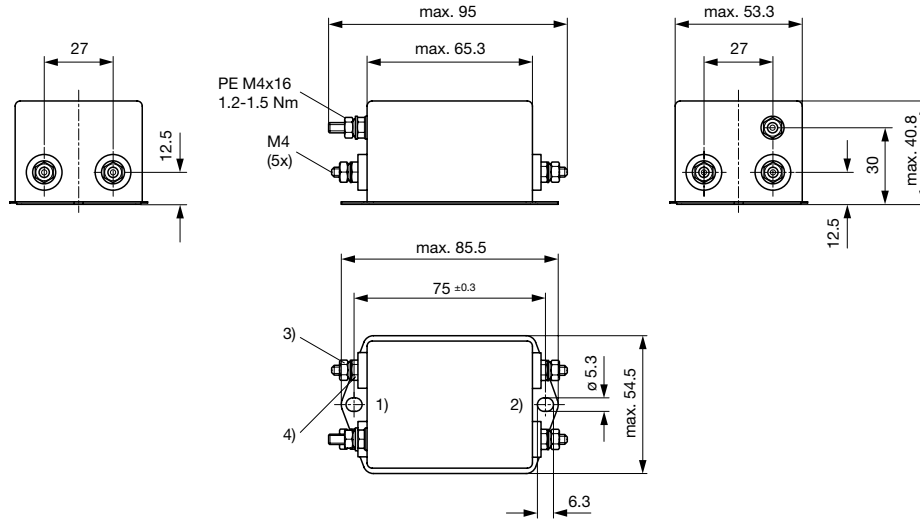
- 1) Line
- 2) Load

Case PK with quick connect terminals



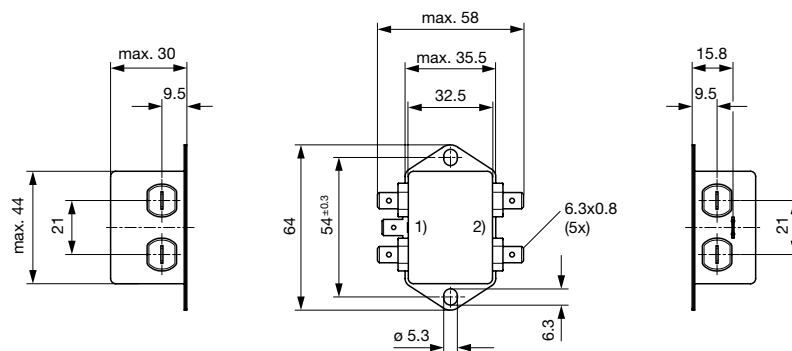
- 1) Line
- 2) Load

## Case PK with bolt and nut



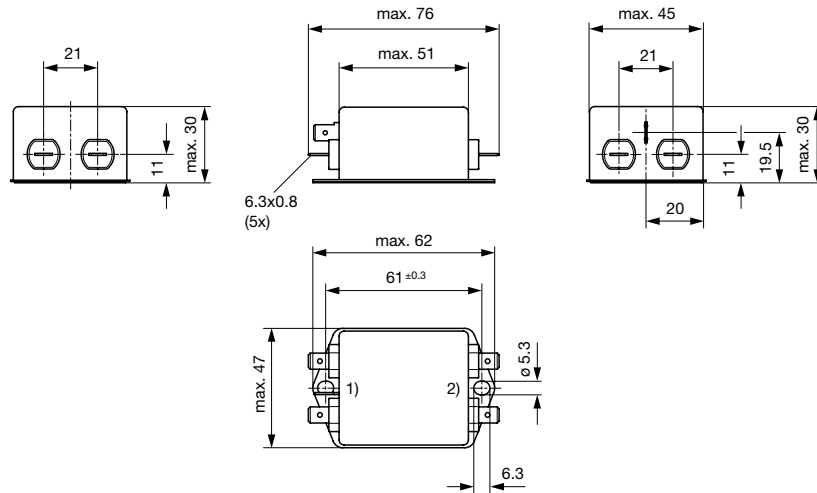
- 1) Line
- 2) Load
- 3) Nut torque 0.8...1 Nm, keep lock-nut fastened
- 4) Lock-nut do not unscrew

## Case QC with quick connect terminals



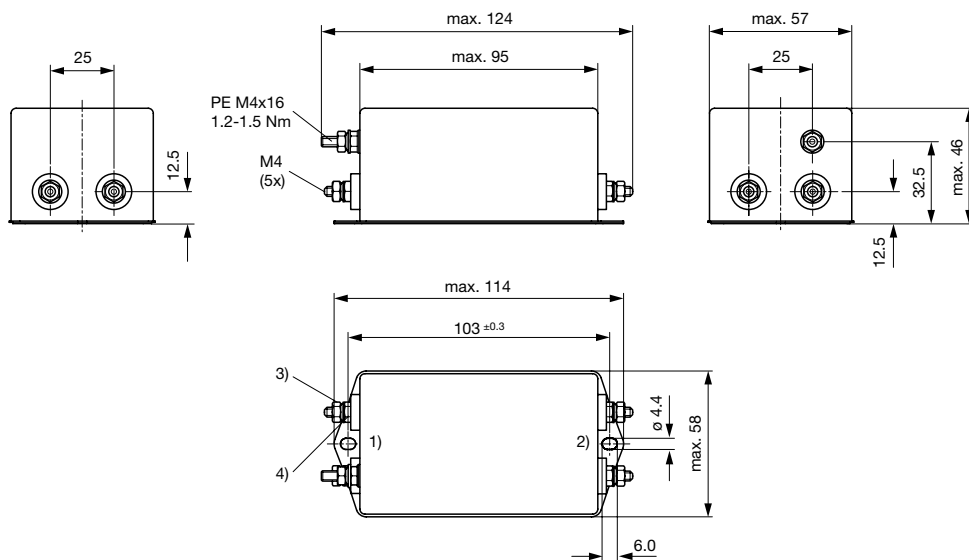
- 1) Line
- 2) Load

Case QD with quick connect terminals



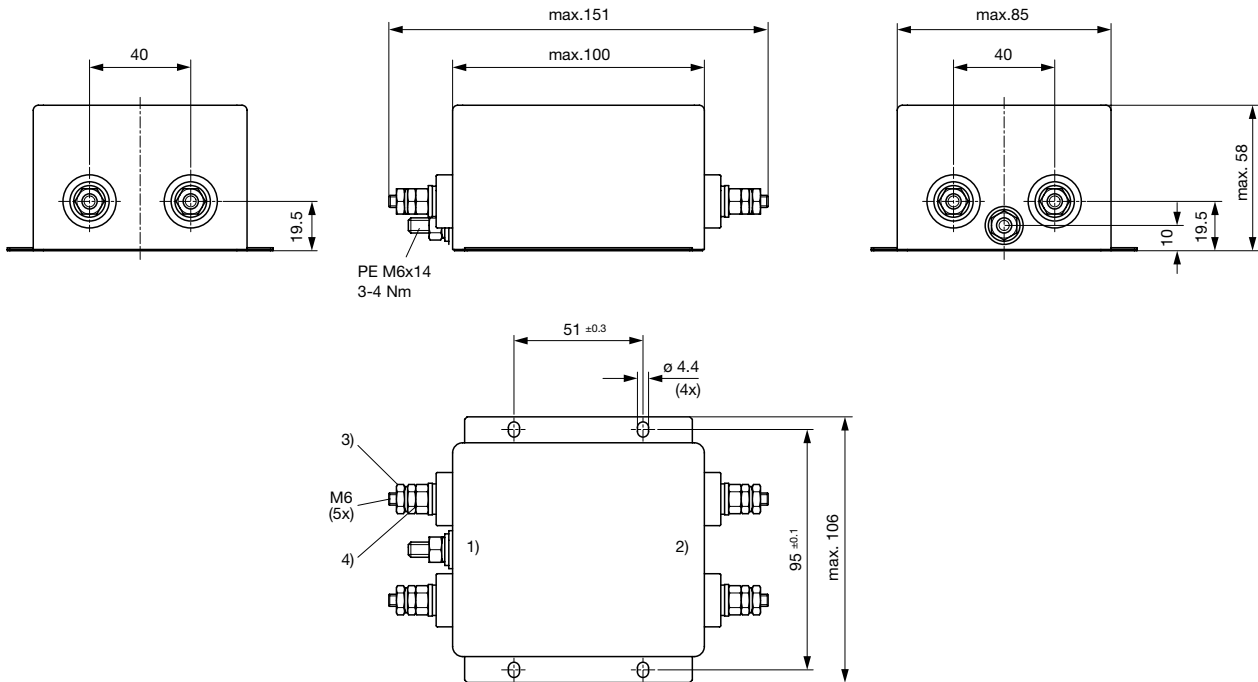
- 1) Line
- 2) Load

Case QE with bolt and nut



- 1) Line
- 2) Load
- 3) Nut torque 0.8...1 Nm, keep lock-nut fastened
- 4) Lock-nut do not unscrew

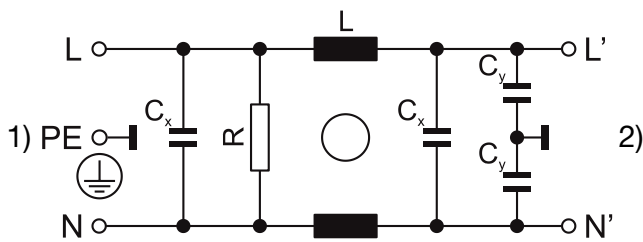
## Case QF with bolt and nut



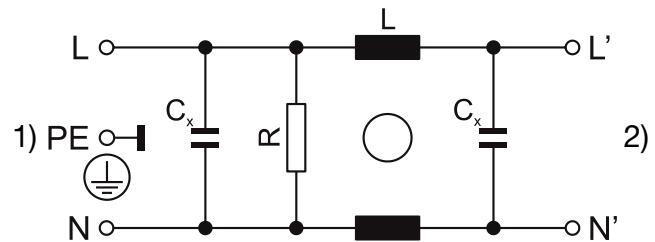
- 1) Line
- 2) Load
- 3) Nut torque 3...4 Nm, keep lock-nut fastened
- 4) Do not unscrew lock-nut

## Diagrams

Standard version  
Design N, P



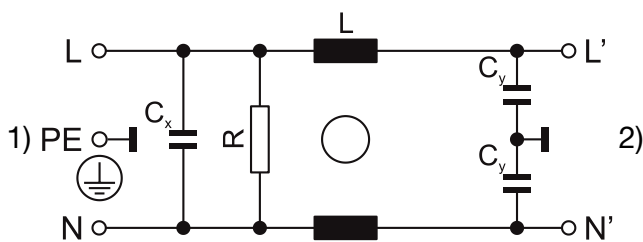
Medical version M5  
Design N, P



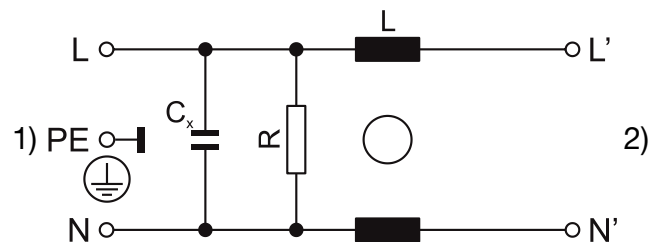
- 1) Line
- 2) Load

- 1) Line
- 2) Load

Standard version  
Design Q



Medical version M5  
Design Q

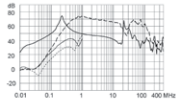


- 1) Line
- 2) Load

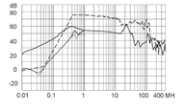
- 1) Line
- 2) Load

**Attenuation Loss** . . 0.1/100Ω differential mode ..... 100/0.1Ω differential mode - - - - 50Ω differential mode \_\_\_\_\_ 50Ω common mode  
Standard version

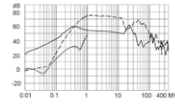
1 A / Design N



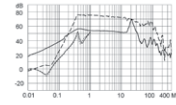
3 A / Design N



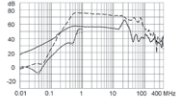
4 A / Design N



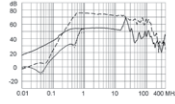
6 A / Design N



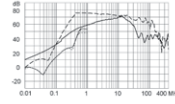
8 A / Design N



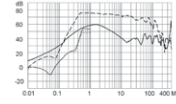
10 A / Design N



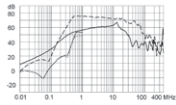
12 A / Design N



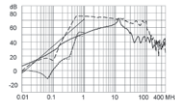
16 A / Design N



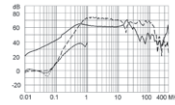
20 A / Design N



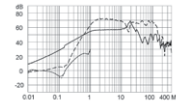
30 A / Design N



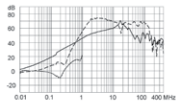
1 A / Design P



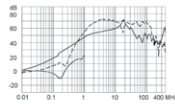
3 A / Design P



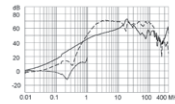
6 A / Design P



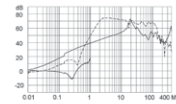
10 A / Design P



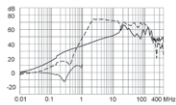
12 A / Design P



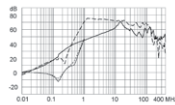
16 A / Design P



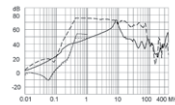
20 A / Design P



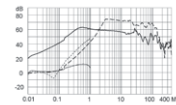
30 A / Design P



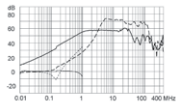
60 A / Design P



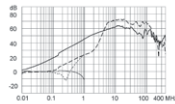
1 A / Design Q



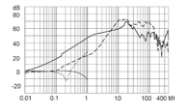
3 A / Design Q



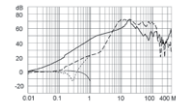
6 A / Design Q



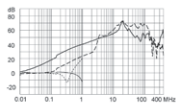
10 A / Design Q



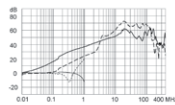
12 A / Design Q



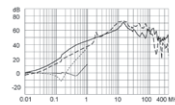
16 A / Design Q



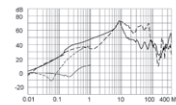
20 A / Design Q



30 A / Design Q

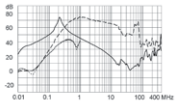


60 A / Design Q

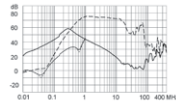


Medical version (M5)

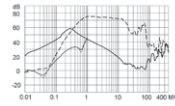
1 A / Design N



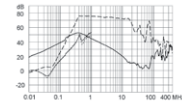
3 A / Design N



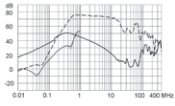
4 A / Design N



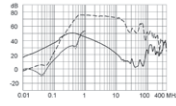
6 A / Design N



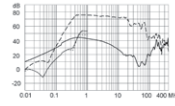
8 A / Design N



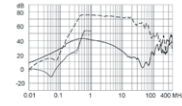
10 A / Design N



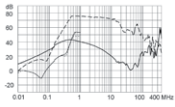
12 A / Design N



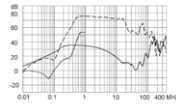
16 A / Design N



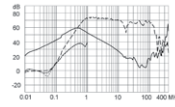
20 A / Design N



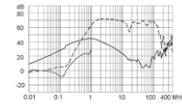
30 A / Design N



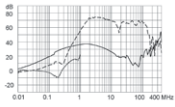
1 A / Design P



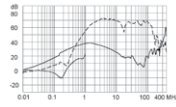
3 A / Design P



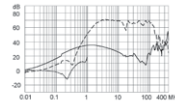
6 A / Design P



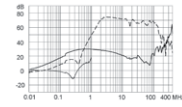
10 A / Design P



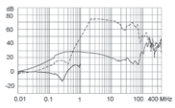
12 A / Design P



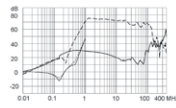
16 A / Design P



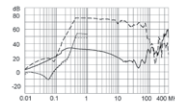
20 A / Design P



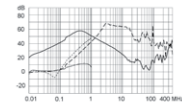
30 A / Design P



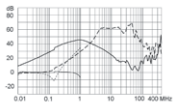
60 A / Design P



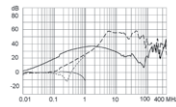
1 A / Design Q



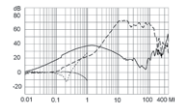
3 A / Design Q



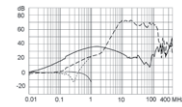
6 A / Design Q



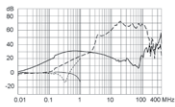
10 A / Design Q



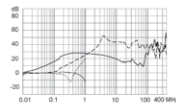
12 A / Design Q



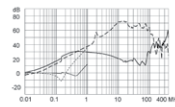
16 A / Design Q



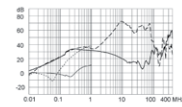
20 A / Design Q



30 A / Design Q



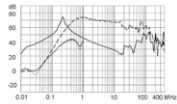
60 A / Design Q



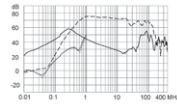


Medical version (M80)

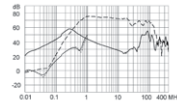
1 A / Design N



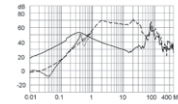
3 A / Design N



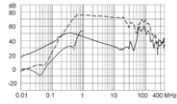
4 A / Design N



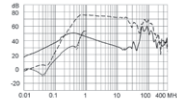
6 A / Design N



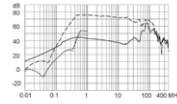
8 A / Design N



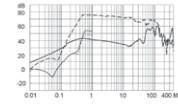
10 A / Design N



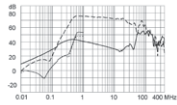
12 A / Design N



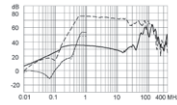
16 A / Design N



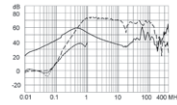
20 A / Design N



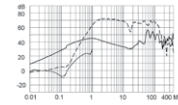
30 A / Design N



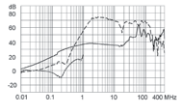
1 A / Design P



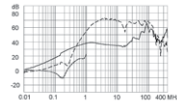
3 A / Design P



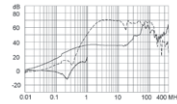
6 A / Design P



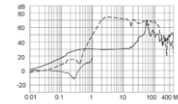
10 A / Design P



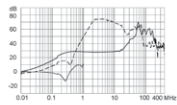
12 A / Design P



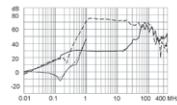
16 A / Design P



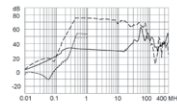
20 A / Design P



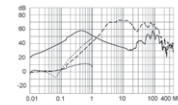
30 A / Design P



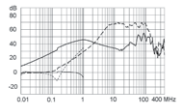
60 A / Design P



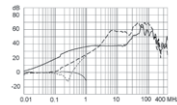
1 A / Design Q



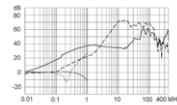
3 A / Design Q



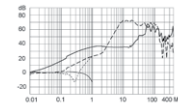
6 A / Design Q



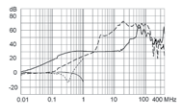
10 A / Design Q



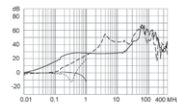
12 A / Design Q



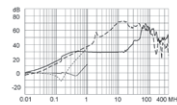
16 A / Design Q



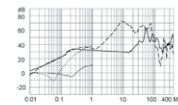
20 A / Design Q



30 A / Design Q



60 A / Design Q



All Variants

| Rated current | Filter-Type      | Terminal                            | Design | Leakage | Ri   | Power Loss | Weight | Housings | Packaging | Order Number                 |
|---------------|------------------|-------------------------------------|--------|---------|------|------------|--------|----------|-----------|------------------------------|
| [A]           |                  |                                     |        | [mA]    | [mΩ] | [W]        | [g]    |          | [ST]      |                              |
| 1             | Standard Version | Quick connect terminal 6.3 x 0.8 mm | N      | 0.5     | 475  | 1          | 72 g   | PG       | 15        | <a href="#">5500.2630.01</a> |
| 3             | Standard Version | Quick connect terminal 6.3 x 0.8 mm | N      | 0.5     | 83   | 1.5        | 104 g  | PH       | 15        | <a href="#">5500.2631.01</a> |
| 4             | Standard Version | Quick connect terminal 6.3 x 0.8 mm | N      | 0.5     | 53   | 1.7        | 108 g  | PH       | 15        | <a href="#">5500.2632.01</a> |
| 6             | Standard Version | Quick connect terminal 6.3 x 0.8 mm | N      | 0.5     | 32.5 | 2.4        | 109 g  | PH       | 15        | <a href="#">5500.2633.01</a> |
| 8             | Standard Version | Quick connect terminal 6.3 x 0.8 mm | N      | 0.5     | 29.2 | 3.8        | 190 g  | PI       | 10        | <a href="#">5500.2634.01</a> |
| 1             | Standard Version | Quick connect terminal 6.3 x 0.8 mm | P      | 0.5     | 320  | 0.65       | 80 g   | QC       | 15        | <a href="#">5500.2640.01</a> |
| 3             | Standard Version | Quick connect terminal 6.3 x 0.8 mm | P      | 0.5     | 36   | 0.65       | 81 g   | QC       | 15        | <a href="#">5500.2641.01</a> |
| 6             | Standard Version | Quick connect terminal 6.3 x 0.8 mm | P      | 0.5     | 12   | 0.86       | 80 g   | QC       | 15        | <a href="#">5500.2642.01</a> |
| 10            | Standard Version | Quick connect terminal 6.3 x 0.8 mm | P      | 0.5     | 5    | 1          | 87 g   | QC       | 15        | <a href="#">5500.2643.01</a> |
| 12            | Standard Version | Quick connect terminal 6.3 x 0.8 mm | P      | 0.5     | 4    | 1.2        | 92 g   | QC       | 15        | <a href="#">5500.2644.01</a> |
| 16            | Standard Version | Quick connect terminal 6.3 x 0.8 mm | P      | 0.5     | 2    | 1          | 138 g  | QD       | 15        | <a href="#">5500.2645.01</a> |

| Rated current<br>[A] | Filter-Type        | Terminal                            | Design | Lea-<br>kage<br>[mA] | Ri<br>[mΩ] | Power<br>Loss<br>[W] | Weight<br>[g] | Housings | Packa-<br>ging<br>[ST] | Order Number |
|----------------------|--------------------|-------------------------------------|--------|----------------------|------------|----------------------|---------------|----------|------------------------|--------------|
| 20                   | Standard Version   | Quick connect terminal 6.3 x 0.8 mm | P      | 0.5                  | 1.9        | 1.5                  | 206 g         | PI       | 10                     | 5500.2646.01 |
| 1                    | Standard Version   | Quick connect terminal 6.3 x 0.8 mm | Q      | 0.5                  | 320        | 0.65                 | 66 g          | PG       | 15                     | 5500.2650.01 |
| 3                    | Standard Version   | Quick connect terminal 6.3 x 0.8 mm | Q      | 0.5                  | 36         | 0.65                 | 70 g          | PG       | 15                     | 5500.2651.01 |
| 6                    | Standard Version   | Quick connect terminal 6.3 x 0.8 mm | Q      | 0.5                  | 12         | 0.86                 | 100 g         | PG       | 15                     | 5500.2652.01 |
| 10                   | Standard Version   | Quick connect terminal 6.3 x 0.8 mm | Q      | 0.5                  | 5          | 1                    | 90 g          | QC       | 15                     | 5500.2653.01 |
| 12                   | Standard Version   | Quick connect terminal 6.3 x 0.8 mm | Q      | 0.5                  | 4          | 1.2                  | 90 g          | QC       | 15                     | 5500.2654.01 |
| 16                   | Standard Version   | Quick connect terminal 6.3 x 0.8 mm | Q      | 0.5                  | 2          | 1                    | 136 g         | QD       | 15                     | 5500.2655.01 |
| 20                   | Standard Version   | Quick connect terminal 6.3 x 0.8 mm | Q      | 0.5                  | 1.9        | 1.5                  | 204 g         | PI       | 10                     | 5500.2656.01 |
| 10                   | Industrial Version | Quick connect terminal 6.3 x 0.8 mm | N      | 1                    | 22.8       | 4.6                  | 200 g         | PI       | 10                     | 5500.2635.01 |
| 12                   | Industrial Version | Quick connect terminal 6.3 x 0.8 mm | N      | 1                    | 13.2       | 3.8                  | 201 g         | PI       | 10                     | 5500.2636.01 |
| 16                   | Industrial Version | Quick connect terminal 6.3 x 0.8 mm | N      | 1                    | 7.2        | 3.7                  | 308 g         | PK       | 10                     | 5500.2637.01 |
| 20                   | Industrial Version | Quick connect terminal 6.3 x 0.8 mm | N      | 1                    | 6.0        | 4.8                  | 322 g         | PK       | 10                     | 5500.2638.01 |
| 30                   | Industrial Version | Bolt and nut M4                     | N      | 1                    | 2.9        | 5.2                  | 355 g         | PK       | 10                     | 5500.2639.03 |
| 30                   | Industrial Version | Bolt and nut M4                     | P      | 1                    | 1          | 1.8                  | 450 g         | QE       | 5                      | 5500.2647.03 |
| 60                   | Industrial Version | Bolt and nut M6                     | P      | 1                    | 1          | 7.2                  | 1220 g        | QF       | 1                      | 5500.2648.03 |
| 30                   | Industrial Version | Bolt and nut M4                     | Q      | 1                    | 1          | 1.8                  | 450 g         | QE       | 5                      | 5500.2657.03 |
| 60                   | Industrial Version | Bolt and nut M6                     | Q      | 1                    | 1          | 7.2                  | 1220 g        | QF       | 1                      | 5500.2658.03 |
| 1                    | Medical (M5)       | Quick connect terminal 6.3 x 0.8 mm | N      | 0.005                | 475        | 1                    | 72 g          | PG       | 15                     | 5500.2630.04 |
| 3                    | Medical (M5)       | Quick connect terminal 6.3 x 0.8 mm | N      | 0.005                | 83         | 1.5                  | 104 g         | PH       | 15                     | 5500.2631.04 |
| 4                    | Medical (M5)       | Quick connect terminal 6.3 x 0.8 mm | N      | 0.005                | 53         | 1.7                  | 108 g         | PH       | 15                     | 5500.2632.04 |
| 6                    | Medical (M5)       | Quick connect terminal 6.3 x 0.8 mm | N      | 0.005                | 32.5       | 2.4                  | 109 g         | PH       | 15                     | 5500.2633.04 |
| 8                    | Medical (M5)       | Quick connect terminal 6.3 x 0.8 mm | N      | 0.005                | 29.2       | 3.8                  | 190 g         | PI       | 10                     | 5500.2634.04 |
| 10                   | Medical (M5)       | Quick connect terminal 6.3 x 0.8 mm | N      | 0.005                | 22.8       | 4.6                  | 200 g         | PI       | 10                     | 5500.2635.04 |
| 12                   | Medical (M5)       | Quick connect terminal 6.3 x 0.8 mm | N      | 0.005                | 13.2       | 3.8                  | 201 g         | PI       | 10                     | 5500.2636.04 |
| 16                   | Medical (M5)       | Quick connect terminal 6.3 x 0.8 mm | N      | 0.005                | 7.2        | 3.7                  | 308 g         | PK       | 10                     | 5500.2637.04 |
| 20                   | Medical (M5)       | Quick connect terminal 6.3 x 0.8 mm | N      | 0.005                | 6.0        | 4.8                  | 322 g         | PK       | 10                     | 5500.2638.04 |
| 30                   | Medical (M5)       | Bolt and nut M4                     | N      | 0.005                | 2.9        | 5.2                  | 355 g         | PK       | 10                     | 5500.2639.06 |
| 1                    | Medical (M5)       | Quick connect terminal 6.3 x 0.8 mm | P      | 0.005                | 320        | 0.65                 | 80 g          | QC       | 15                     | 5500.2640.04 |
| 3                    | Medical (M5)       | Quick connect terminal 6.3 x 0.8 mm | P      | 0.005                | 36         | 0.65                 | 81 g          | QC       | 15                     | 5500.2641.04 |
| 6                    | Medical (M5)       | Quick connect terminal 6.3 x 0.8 mm | P      | 0.005                | 12         | 0.86                 | 80 g          | QC       | 15                     | 5500.2642.04 |
| 10                   | Medical (M5)       | Quick connect terminal 6.3 x 0.8 mm | P      | 0.005                | 5          | 1                    | 87 g          | QC       | 15                     | 5500.2643.04 |
| 12                   | Medical (M5)       | Quick connect terminal 6.3 x 0.8 mm | P      | 0.005                | 4          | 1.2                  | 92 g          | QC       | 15                     | 5500.2644.04 |
| 16                   | Medical (M5)       | Quick connect terminal 6.3 x 0.8 mm | P      | 0.005                | 2          | 1                    | 138 g         | QD       | 15                     | 5500.2645.04 |
| 20                   | Medical (M5)       | Quick connect terminal 6.3 x 0.8 mm | P      | 0.005                | 1.9        | 1.5                  | 206 g         | PI       | 10                     | 5500.2646.04 |
| 30                   | Medical (M5)       | Bolt and nut M4                     | P      | 0.005                | 1          | 1.8                  | 450 g         | QE       | 5                      | 5500.2647.06 |
| 60                   | Medical (M5)       | Bolt and nut M6                     | P      | 0.005                | 1          | 7.2                  | 1220 g        | QF       | 1                      | 5500.2648.06 |
| 1                    | Medical (M5)       | Quick connect terminal 6.3 x 0.8 mm | Q      | 0.005                | 320        | 0.65                 | 66 g          | PG       | 15                     | 5500.2650.04 |
| 3                    | Medical (M5)       | Quick connect terminal 6.3 x 0.8 mm | Q      | 0.005                | 36         | 0.65                 | 70 g          | PG       | 15                     | 5500.2651.04 |
| 6                    | Medical (M5)       | Quick connect terminal 6.3 x 0.8 mm | Q      | 0.005                | 12         | 0.86                 | 100 g         | PG       | 15                     | 5500.2652.04 |
| 10                   | Medical (M5)       | Quick connect terminal 6.3 x 0.8 mm | Q      | 0.005                | 5          | 1                    | 90 g          | QC       | 15                     | 5500.2653.04 |
| 12                   | Medical (M5)       | Quick connect terminal 6.3 x 0.8 mm | Q      | 0.005                | 4          | 1.2                  | 90 g          | QC       | 15                     | 5500.2654.04 |
| 16                   | Medical (M5)       | Quick connect terminal 6.3 x 0.8 mm | Q      | 0.005                | 2          | 1                    | 136 g         | QD       | 15                     | 5500.2655.04 |
| 20                   | Medical (M5)       | Quick connect terminal 6.3 x 0.8 mm | Q      | 0.005                | 1.9        | 1.5                  | 204 g         | PI       | 10                     | 5500.2656.04 |
| 30                   | Medical (M5)       | Bolt and nut M4                     | Q      | 0.005                | 1          | 1.8                  | 450 g         | QE       | 5                      | 5500.2657.06 |
| 60                   | Medical (M5)       | Bolt and nut M6                     | Q      | 0.005                | 1          | 7.2                  | 1220 g        | QF       | 1                      | 5500.2658.06 |
| 1                    | Medical (M80)      | Quick connect terminal 6.3 x 0.8 mm | N      | 0.08                 | 475        | 1                    | 72 g          | PG       | 15                     | 5500.2630.07 |
| 3                    | Medical (M80)      | Quick connect terminal 6.3 x 0.8 mm | N      | 0.08                 | 83         | 1.5                  | 104 g         | PH       | 15                     | 5500.2631.07 |
| 4                    | Medical (M80)      | Quick connect terminal 6.3 x 0.8 mm | N      | 0.08                 | 53         | 1.7                  | 108 g         | PH       | 15                     | 5500.2632.07 |
| 6                    | Medical (M80)      | Quick connect terminal 6.3 x 0.8 mm | N      | 0.08                 | 32.5       | 2.4                  | 109 g         | PH       | 15                     | 5500.2633.07 |
| 8                    | Medical (M80)      | Quick connect terminal 6.3 x 0.8 mm | N      | 0.08                 | 29.2       | 3.8                  | 190 g         | PI       | 10                     | 5500.2634.07 |
| 10                   | Medical (M80)      | Quick connect terminal 6.3 x 0.8 mm | N      | 0.08                 | 22.8       | 4.6                  | 200 g         | PI       | 10                     | 5500.2635.07 |
| 12                   | Medical (M80)      | Quick connect terminal 6.3 x 0.8 mm | N      | 0.08                 | 13.2       | 3.8                  | 201 g         | PI       | 10                     | 5500.2636.07 |
| 16                   | Medical (M80)      | Quick connect terminal 6.3 x 0.8 mm | N      | 0.08                 | 7.2        | 3.7                  | 308 g         | PK       | 10                     | 5500.2637.07 |
| 20                   | Medical (M80)      | Quick connect terminal 6.3 x 0.8 mm | N      | 0.08                 | 6.0        | 4.8                  | 322 g         | PK       | 10                     | 5500.2638.07 |

| Rated current | Filter-Type   | Terminal                            | Design | Leakage | Ri   | Power Loss | Weight | Housings | Packaging | Order Number |
|---------------|---------------|-------------------------------------|--------|---------|------|------------|--------|----------|-----------|--------------|
| [A]           |               |                                     |        | [mA]    | [mΩ] | [W]        | [g]    |          | [ST]      |              |
| 30            | Medical (M80) | Bolt and nut M4                     | N      | 0.08    | 2.9  | 5.2        | 355 g  | PK       | 10        | 5500.2639.09 |
| 1             | Medical (M80) | Quick connect terminal 6.3 x 0.8 mm | P      | 0.08    | 320  | 0.65       | 80 g   | QC       | 15        | 5500.2640.07 |
| 3             | Medical (M80) | Quick connect terminal 6.3 x 0.8 mm | P      | 0.08    | 36   | 0.65       | 81 g   | QC       | 15        | 5500.2641.07 |
| 6             | Medical (M80) | Quick connect terminal 6.3 x 0.8 mm | P      | 0.08    | 12   | 0.86       | 80 g   | QC       | 15        | 5500.2642.07 |
| 10            | Medical (M80) | Quick connect terminal 6.3 x 0.8 mm | P      | 0.08    | 5    | 1          | 87 g   | QC       | 15        | 5500.2643.07 |
| 12            | Medical (M80) | Quick connect terminal 6.3 x 0.8 mm | P      | 0.08    | 4    | 1.2        | 92 g   | QC       | 15        | 5500.2644.07 |
| 16            | Medical (M80) | Quick connect terminal 6.3 x 0.8 mm | P      | 0.08    | 2    | 1          | 138 g  | QD       | 15        | 5500.2645.07 |
| 20            | Medical (M80) | Quick connect terminal 6.3 x 0.8 mm | P      | 0.08    | 1.9  | 1.5        | 206 g  | PI       | 10        | 5500.2646.07 |
| 30            | Medical (M80) | Bolt and nut M4                     | P      | 0.08    | 1    | 1.8        | 450 g  | QE       | 5         | 5500.2647.09 |
| 60            | Medical (M80) | Bolt and nut M6                     | P      | 0.08    | 1    | 7.2        | 1220 g | QF       | 1         | 5500.2648.09 |
| 1             | Medical (M80) | Quick connect terminal 6.3 x 0.8 mm | Q      | 0.08    | 320  | 0.65       | 66 g   | PG       | 15        | 5500.2650.07 |
| 3             | Medical (M80) | Quick connect terminal 6.3 x 0.8 mm | Q      | 0.08    | 36   | 0.65       | 70 g   | PG       | 15        | 5500.2651.07 |
| 6             | Medical (M80) | Quick connect terminal 6.3 x 0.8 mm | Q      | 0.08    | 12   | 0.86       | 100 g  | PG       | 15        | 5500.2652.07 |
| 10            | Medical (M80) | Quick connect terminal 6.3 x 0.8 mm | Q      | 0.08    | 5    | 1          | 90 g   | QC       | 15        | 5500.2653.07 |
| 12            | Medical (M80) | Quick connect terminal 6.3 x 0.8 mm | Q      | 0.08    | 4    | 1.2        | 90 g   | QC       | 15        | 5500.2654.07 |
| 16            | Medical (M80) | Quick connect terminal 6.3 x 0.8 mm | Q      | 0.08    | 2    | 1          | 136 g  | QD       | 15        | 5500.2655.07 |
| 20            | Medical (M80) | Quick connect terminal 6.3 x 0.8 mm | Q      | 0.08    | 1.9  | 1.5        | 204 g  | PI       | 10        | 5500.2656.07 |
| 30            | Medical (M80) | Bolt and nut M4                     | Q      | 0.08    | 1    | 1.8        | 450 g  | QE       | 5         | 5500.2657.09 |
| 60            | Medical (M80) | Bolt and nut M6                     | Q      | 0.08    | 1    | 7.2        | 1220 g | QF       | 1         | 5500.2658.09 |

Most Popular.

Availability for all products can be searched real-time: <http://www.schurter.com/Stock-Check/Stock-Check-SCHURTER>

- 3 designs N) excellent symmetrical noise attenuation
- P) high symmetrical noise attenuation
- Q) standard symmetrical noise attenuation