

## automatic detectors and manual call points



6430 71



6430 72



380 69



380 23

Pack	Cat.Nos	Automatic detectors for fire alarm panels with base
1	6430 71	<b>Heat detector</b> Certified EN 54-5 standard (CE CPD) Detects temperature rise with threshold of 60 °C, average detection area: 30 m <sup>2</sup> (replaces Cat.No 6430 73)
1	6430 72	<b>Optical smoke detector</b> Certified EN 54-7 standard (CE CPD) For rapid detection of fire starting before flames appear Average detection area: 60 m <sup>2</sup> (replaces Cat.No 6430 74)
1	406 58	<b>Remote light indicator</b> Help to confine a fire Flush-mounting fixing with Mosaic support Cat.No 802 51, plate Cat.No 788 02 Surface-mounting fixing with Mosaic support Cat.No 611 69, plate Cat.No 788 02 and frame Cat.No 802 31

Pack	Cat.Nos	Manual call points IP 40 - IK 07
1	380 69	Surface mounting: 90 x 90 x 57 mm Flush-mounting: 90 x 90 x 27 mm Call by pressing the membrane (pressure 2.5 kg) with clear display of the call position Reset on front of device, with special key (supplied with the product) Space reserved to stick a function using identification label Can receive a sealable cover Cat.No 380 97
1	380 23	<b>For fire alarm equipment</b> Certified EN 54-11 standard (CE CPD) Equipped with NO/NC contact - 0.1 A - 48 V <sub>~</sub> Red - Resettable
1	380 47	<b>For emergency exit</b> Equipped with NO/NC contact - 5 A - 24 V <sub>~</sub> / 1 A - 48 V <sub>~</sub> Green - Resettable Green - Resettable with a visual status indicator
1	380 25	<b>For extinguishing system</b> Equipped with NO/NC contact - 6 A - 250V <sub>~</sub> / 1 A - 48 V <sub>~</sub> / 5 A - 24 V <sub>~</sub> Equipped with a sealable cover (Cat.No 380 97) Yellow - Resettable
1	380 71	<b>For other applications</b> Equipped with NO/NC contact - 6 A - 250V <sub>~</sub> / 1 A - 48 V <sub>~</sub> / 5 A - 24 V <sub>~</sub> Can be used to stop air conditioning or other technical applications White - Resettable
1	380 04	White - Resettable with a visual status indicator
1	380 06	White - Resettable with 2 long life 230 V <sub>~</sub> LED indicators (green/red)

## sounders, flashing light, electromagnetic door holder and safety electrical power supply



415 07



415 08



415 06

Pack	Cat.Nos	Sounders
1	415 07	To connect to fire alarm panel, power box or filtered stabilised DC power supply. Optional continuous sound. Service alarm option <b>IP 41 - IK 04</b> Certified EN 54-3 standard (CE CPD) Mosaic device 2 modules Sound output at 2 m: 70 dB Operating voltage range: 12-24-48 V <sub>~</sub> +/- 10% Average consumption: 12 V <sub>~</sub> 5 mA, 24 V <sub>~</sub> 9 mA, 48 V <sub>~</sub> 17 mA White
1	415 08	<b>IP 31 - IK 07</b> Certified EN 54-3 standard (CE CPD) Sound output at 2 m: 90 dB Surface-mounting. Dim.: 143 x 121 x 62 mm Operating voltage range: 12-24-48 V <sub>~</sub> +/- 10% Average consumption: 12 V <sub>~</sub> 20 mA, 24 V <sub>~</sub> 25 mA, 48 V <sub>~</sub> 35 mA White
1	415 06	Red
1	415 05	<b>IP 65 - IK 07</b> Sounder with red flashing light Sound output at 1 m: 92 dB Surface-mounting Average consumption: 24 V <sub>~</sub> 62 mA
1	415 14	<b>IP 44 - IK 09</b> Sound output at 2 m: 105 dB Surface-mounting Average consumption: 24 V <sub>~</sub> 175 mA Red RAL 3000
1	414 62	<b>IP 44 - IK 10</b> Sound output at 1 m: 90 dB Surface mounting Average consumption: 24 V <sub>~</sub> 70 mA
1	6430 80	<b>Flashing light</b> IP 54 Average consumption: 24 V <sub>~</sub> 80 mA
1	406 87	<b>Electromagnetic door holder</b> Automatically closes fire doors by current breaking Conform to EN 50130-5 standard IK 07 White metal connection box with electromagnetic element and local push button Wall surface-mounting Metal washer hinged for door fixing Operating voltage: 24 V <sub>~</sub> +/- 10% Average consumption: 24 V <sub>~</sub> 77 mA Power: 1.84 W Strength: 200 N (or 20 Kg minimum)
1	614 79	<b>Safety electrical power supply</b> For DC power supply of fire safety installations such as fire doors, smoke removal devices, sprinklers, sounders Power supply when mains on or off Fitted with sealed Ni-Cd batteries Power supply 230 V <sub>~</sub> - 50/60 Hz The power is given for 1 hour operating range Voltage: 27 V <sub>~</sub> 5 W

## safety boxes



380 09



380 11



380 24



380 54

Pack	Cat.Nos	Break glass emergency boxes
		<p>Polycarbonate, Class II - IK 07</p> <ul style="list-style-type: none"> <li>Equipped with: <ul style="list-style-type: none"> <li>- hinged glass door with locking option by key (Cat.No 013 90)</li> <li>- 3 cable entries for CG ISO 16/20 (by top or bottom as reversible product)</li> <li>- 2 entries from back of product Ø20</li> <li>- 2 side entries for mini-trunking 20 x 12.5 and 32 x 12.5</li> <li>- 1 NC contact and 1 NO contact</li> </ul> </li> </ul> <p>Breaking capacity:</p> <ul style="list-style-type: none"> <li>- 400 V~ / 4.5 A</li> <li>- 230 V~ / 6 A</li> <li>- 48 V~ / 1 A</li> <li>- 24 V~ / 1.5 A</li> </ul> <ul style="list-style-type: none"> <li>Flush-mounting option with boxes Ø85</li> </ul> <p>• Dim: 125 x 125 x 71 mm (surface mounting) IP 44 - 125 x 125 x 33 mm (flush mounting) IP 30</p> <p>Red boxes can be used for fire applications and manipulated by fire fighters</p> <p>Yellow boxes can be used for emergency applications and manipulated by employees</p>
		<p><b>Mushroom head button box</b></p> <p>Direct actuation by smashing glass plate</p> <ul style="list-style-type: none"> <li>Equipment: <ul style="list-style-type: none"> <li>- 1 mushroom head button with latching, unlocking by key No 850</li> <li>- 2 long life 230 V~ LED indicators (green/red)</li> </ul> </li> </ul>
1	380 09	Red box with LED
1	380 00	Yellow box with LED
1	380 02	Yellow box without LED
1	380 03	Red box without LED
		<p><b>2-position box</b></p> <ul style="list-style-type: none"> <li>Equipment: <ul style="list-style-type: none"> <li>- 1 mushroom head button for pressing</li> <li>- 1 finishing accessory for simple action release (glass break) or double action (glass break followed by pressing on mushroom head)</li> <li>- 2 long life 230 V~ LED indicators (green/red)</li> </ul> </li> </ul>
1	380 11	Red box without LED
1	380 01	Yellow box without LED
1	380 24	Red box with LED

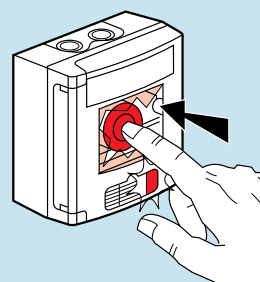
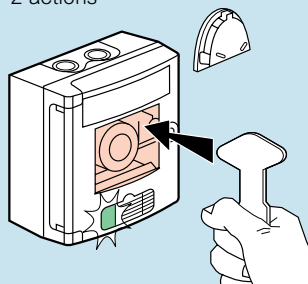
		<p><b>Key storage box</b></p> <p>Polycarbonate</p> <p>Class II</p> <p>IP 44 - IK 07</p> <p>Equipped with:</p> <ul style="list-style-type: none"> <li>- hinged glass door with key No 850</li> <li>- 1 contact 48 V~ - 100 mA contact reporting glass break through technical alarm</li> </ul> <p>Dim: 125 x 125 x 45 mm</p>
1	380 54	

## safety boxes

### Break glass emergency boxes

#### 2-position function operation

2 actions



1 action

