

F

E

D

C

B

A

F

E

D

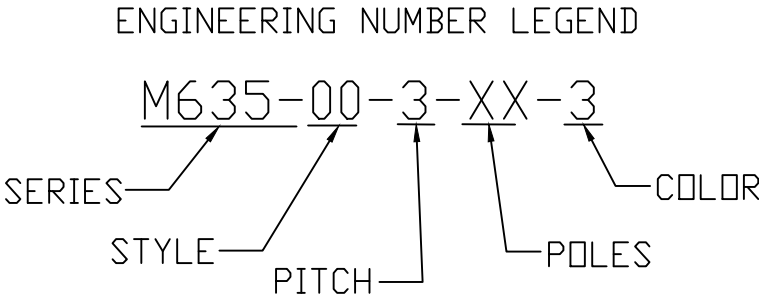
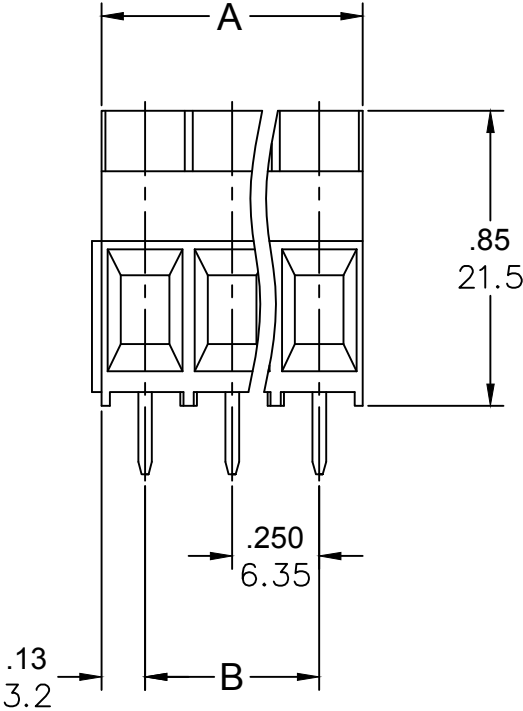
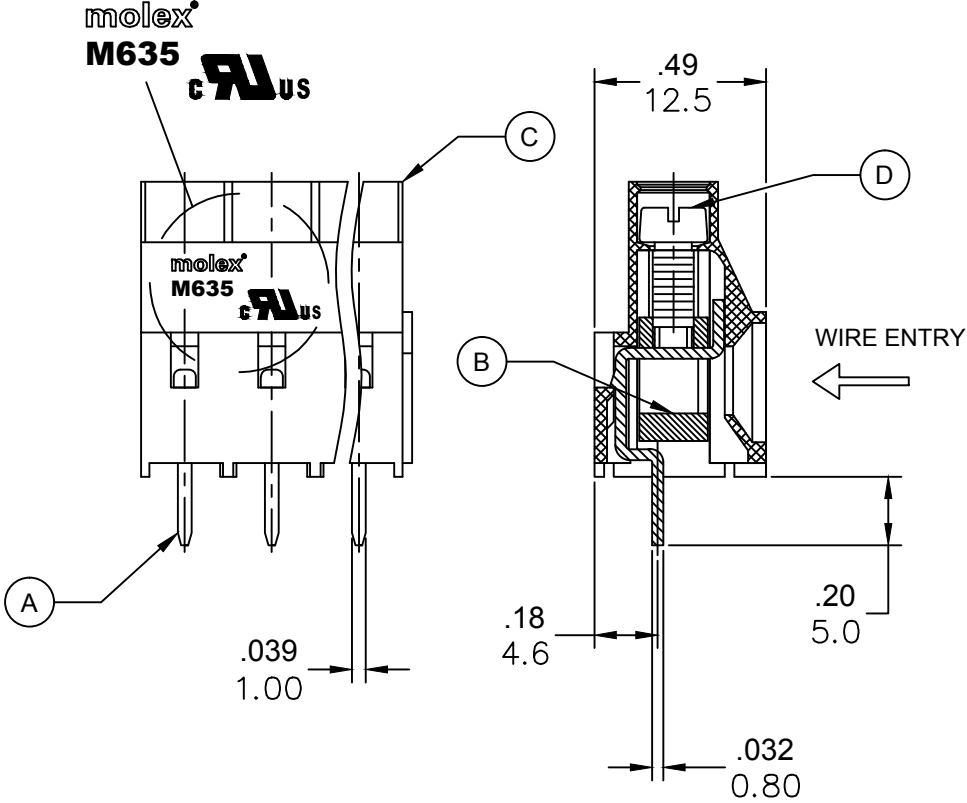
C

B

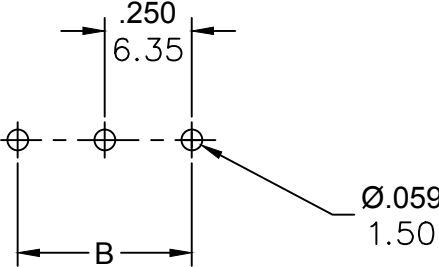
A

PART NUMBER DATA							
CIRCUITS	PART NUMBER	ENGINEERING NUMBER	COLOR	A IN mm		B IN mm	
2	397410002	M635-00-3-02-3	GREEN	.50	12.7	.250	6.35
3	397410003	M635-00-3-03-3	GREEN	.75	19.1	.500	12.70

REF. LAST 2 DIGITS OF PART NUMBER EQUAL CIRCUIT COUNT

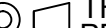


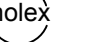


CONTACT FACTORY FOR OPTIONAL COLORS



SPECIFICATIONS:

- 1.MATERIAL:
- A. TERMINAL: BRASS TIN PLATED
 - B. CAGE: BRASS NI PLATED
 - C. BODY:PA66 UL94 V-0
 - D. SCREW: M3, STEEL ZINC PLATED
2. RATING: 300V, 30A
3. MAX TORQUE: 5.0 LBF. IN.
4. WIRE RANGE: 30-10 AWG
5. WIRE STRIP: .28 IN, (7.0mm)
6. DIELECTRIC VOLTAGE WITHSTAND: AC 2500V FOR 1 MINUTE.
7. INSULATION RESISTANCE: DC 500V, 500MΩ
8. RATED IMPULSE VOLTAGE: 4000V, PLUS AND MINUS 5 TIMES EACH
9. OPERATING TEMPERATURE: -40°C TO +105°C
10. MAX SOLDERING TEMP: 260°C (500°F) FOR 5 SECONDS
11. DIMS. SHOWN ARE FOR REFERENCE ONLY

RELEASED EC NO: IPG2014-1936 DRWN: RSTONE 2014/05/15 CHKD: G FARNSW APPR: JFMURPHY 2014/10/16 A	DESCRIPTION REV	QUALITY SYMBOLS	GENERAL TOLERANCES (UNLESS SPECIFIED)			DIMENSION STYLE IN/MM		SCALE ---	DESIGN UNITS METRIC	 THIRD ANGLE PROJECTION	
		 =0  =0		mm	INCH	DRAWN BY RSTONE	DATE 2014/05/15	TITLE EURO TERMINAL BLOCK 6.35MM MODULAR, VERTICAL ----			
			4 PLACES	±---	±---	CHECKED BY G FARNSW	DATE ---				
			3 PLACES	±---	±.005	APPROVED BY JFMURPHY		DATE 2014/10/16	 MOLEX INCORPORATED		
			2 PLACES	±0.13	±.01						
			1 PLACE	±0.3	±---	MATERIAL NO. SEE CHART		DOCUMENT NO. SD-39741-001	SHEET NO. 1 OF 1		
			DRAFT WHERE APPLICABLE MUST REMAIN WITHIN DIMENSIONS			SIZE B	THIS DRAWING CONTAINS INFORMATION THAT IS PROPRIETARY TO MOLEX INCORPORATED AND SHOULD NOT BE USED WITHOUT WRITTEN PERMISSION				