

PLEASE CHECK WWW.MOLEX.COM FOR LATEST PART INFORMATION

Part Number:

0622018636

Status:

Active

Description:

Support Tool for Right Angle Power Module for 7-Row Receptacle

Documents:

RoHS Certificate of Compliance (PDF)

General	
Product Family	Application Tooling
Series	T9999
Comments	See Tooling Specification (PDF) Above
Function	Insertion
Geographic Area	Global
Level of Automation	Manual
More Detailed Tech Information	applicationtooling@molex.com
Product Name	N/A
Tool Type	Handtool
UPC	800756697772
Warranty Disclaimer	CAUTION: Molex tooling crimp specifications are valid only when used with Molex terminals and tooling manufactured by Molex and sold by Molex or authorized distributors ("Molex Tooling"). When using tooling other than Molex Tooling with Molex specific connector systems listed in our ATS documents, the Molex tooling qualification does not apply and the responsibility for full qualification of the connector system is that of the customer. Molex accepts no liability for connector performance or tooling support where tooling other than Molex Tooling is used or where Molex Tooling is modified.

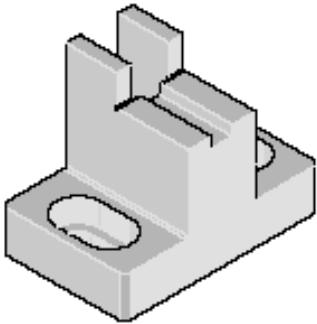
Material Info

Reference - Drawing Numbers

Application Tooling Documents

ATS-622018636, TM-622018699

Note: HDM, HDM+, VHDM, VHDM-HSD and GbX are trademarks or registered trademarks of Amphenol TCS.



Series image - Reference only

EU ELV

Not Reviewed

EU RoHS

Not Reviewed

China RoHS

Not Reviewed

REACH SVHC

Not Reviewed

Halogen-Free

Not Reviewed

Status

Not Reviewed

Need more information on product environmental compliance?

Email productcompliance@molex.com
Please visit the [Contact Us](#) section for any non-product compliance questions.

China ROHS	Not Reviewed
ELV	Not Reviewed
RoHS Phthalates	Not Reviewed

Search Parts in this Series

T9999 Series

Use With

GbX I-Trac™ Right Angle Power Module, 78226 and 78228

PLEASE CHECK WWW.MOLEX.COM FOR LATEST PART INFORMATION