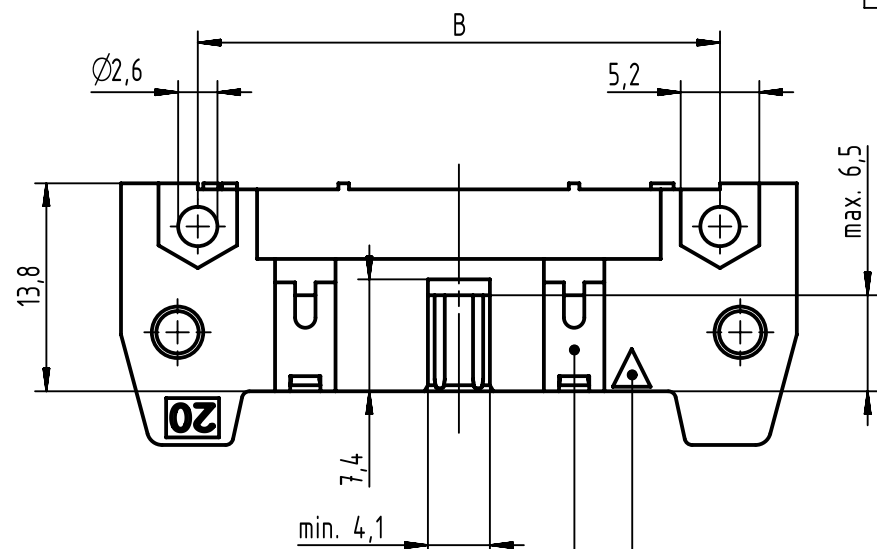
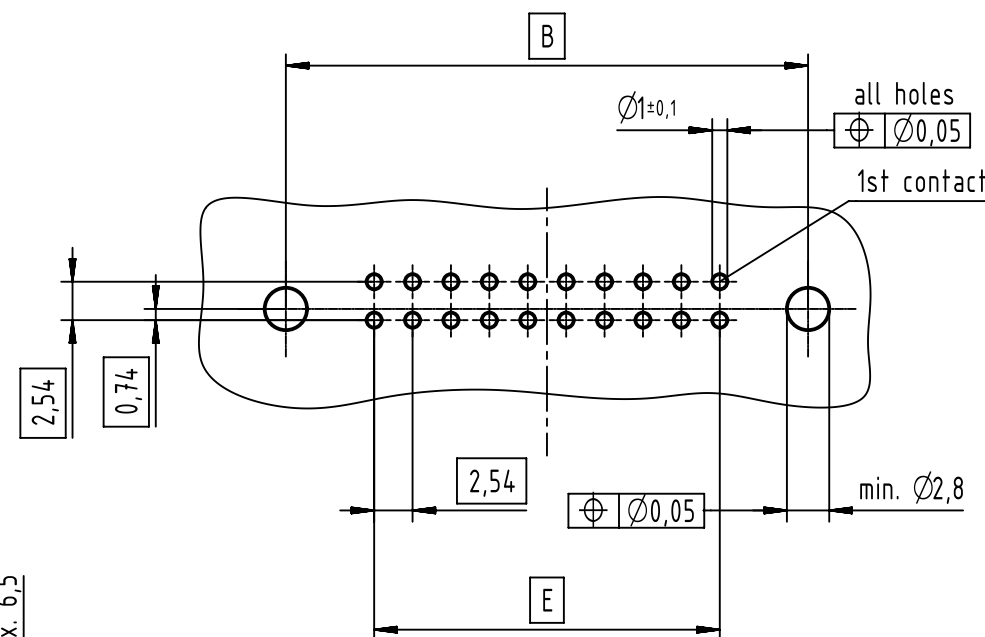
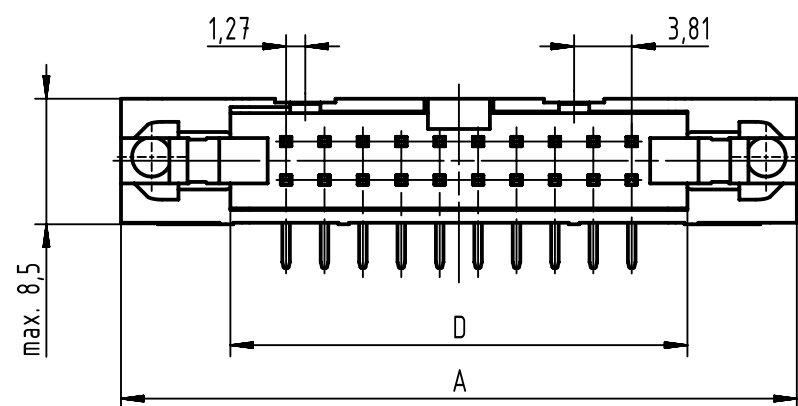
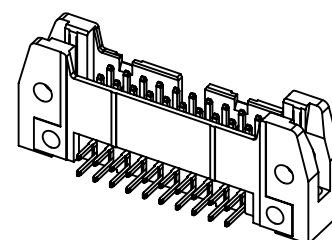


PCB layout
view component side
thickness 1,6



1st contact

see table for coding,
feature arrangement and style



further information
see: DS 09181200001


full range of P/N's and
dimensions shown on page 2/2


coding style table

	style A: for connectors 6-pole
	style B: for connectors from 10 to 14-pole
	style C: for connectors from 16 to 64-pole

	All Dimensions in mm Original Size DIN A3		Scale 2:1	Free size tol. IEC 60603-13		Ref. Sub. TB 09185XXX923 / 500000087654 / 2015-04-08	
	All rights reserved Department EC PD - DE		Created by STORCK	Inspected by TADJE	Standardisation KOHLE	Date 2015-12-21	State Final Release
HARTING Electronics GmbH D-32339 Espelkamp		Title SEK 18 male standard conn angled w/o lever 2.9					Doc-Key / ECM-Nr. 100154464/UGD/026/A 500000094595
		Type TB	Number 09185XXX923			Rev. A	Page 1/2

1	2	3	4	5	6	7	8			
A								A		
B								B		
C	performance level			insulator colour	dimensions					
	no. of contacts	part number	part number		part number	A max.	B	D	E	
	06	09 18 506 7923	09 18 506 6923		09 18 506 5923	27,2	16,76	12,45	2,54 x 2 = 5,08	
	10	09 18 510 7923	09 18 510 6923		09 18 510 5923	32,3	21,84	17,53	2,54 x 4 = 10,16	
	14	09 18 514 7923	09 18 514 6923		09 18 514 5923	37,4	26,92	22,61	2,54 x 6 = 15,24	
	16	09 18 516 7923	09 18 516 6923		09 18 516 5923	39,9	29,46	25,15	2,54 x 7 = 17,78	
	20	09 18 520 7923	09 18 520 6923		09 18 520 5923	45,0	34,54	30,23	2,54 x 9 = 22,86	
	24	09 18 524 7923	09 18 524 6923		09 18 524 5923	50,1	39,62	35,91	2,54 x 11 = 27,94	
	26	09 18 526 7923	09 18 526 6923		09 18 526 5923	52,6	42,16	37,85	2,54 x 12 = 30,48	
	30	09 18 530 7923	09 18 530 6923		09 18 530 5923	58,0	47,24	43,83	2,54 x 14 = 35,56	
	34	09 18 534 7923	09 18 534 6923		09 18 534 5923	62,8	52,32	48,01	2,54 x 16 = 40,64	
	40	09 18 540 7923	09 18 540 6923		09 18 540 5923	70,4	59,94	55,63	2,54 x 19 = 48,26	
	50	09 18 550 7923	09 18 550 6923		09 18 550 5923	83,1	72,64	68,33	2,54 x 24 = 60,96	
	60	09 18 560 7923	09 18 560 6923		09 18 560 5923	95,8	85,34	81,03	2,54 x 29 = 73,66	
	64	09 18 564 7923	09 18 564 6923		09 18 564 5923	100,9	90,42	86,11	2,54 x 31 = 78,74	
D	06	09 18 506 7923 001	09 18 506 6923 001		09 18 506 5923 001	27,2	16,76	12,45	2,54 x 2 = 5,08	
	10	09 18 510 7923 001	09 18 510 6923 001		09 18 510 5923 001	32,3	21,84	17,53	2,54 x 4 = 10,16	
	14	09 18 514 7923 001	09 18 514 6923 001		09 18 514 5923 001	37,4	26,92	22,61	2,54 x 6 = 15,24	
	16	09 18 516 7923 001	09 18 516 6923 001		09 18 516 5923 001	39,9	29,46	25,15	2,54 x 7 = 17,78	
	20	09 18 520 7923 001	09 18 520 6923 001		09 18 520 5923 001	45,0	34,54	30,23	2,54 x 9 = 22,86	
	24	09 18 524 7923 001	09 18 524 6923 001		09 18 524 5923 001	50,1	39,62	35,91	2,54 x 11 = 27,94	
	26	09 18 526 7923 001	09 18 526 6923 001		09 18 526 5923 001	52,6	42,16	37,85	2,54 x 12 = 30,48	
	30	09 18 530 7923 001	09 18 530 6923 001		09 18 530 5923 001	58,0	47,24	43,83	2,54 x 14 = 35,56	
	34	09 18 534 7923 001	09 18 534 6923 001		09 18 534 5923 001	62,8	52,32	48,01	2,54 x 16 = 40,64	
	40	09 18 540 7923 001	09 18 540 6923 001		09 18 540 5923 001	70,4	59,94	55,63	2,54 x 19 = 48,26	
	50	09 18 550 7923 001	09 18 550 6923 001		09 18 550 5923 001	83,1	72,64	68,33	2,54 x 24 = 60,96	
	60	09 18 560 7923 001	09 18 560 6923 001		09 18 560 5923 001	95,8	85,34	81,03	2,54 x 29 = 73,66	
64	09 18 564 7923 001	09 18 564 6923 001	09 18 564 5923 001		100,9	90,42	86,11	2,54 x 31 = 78,74		
E								E		
F				grey						
D				black						
E										
F										
1	2	3	4	5	6	7	8			

	All rights reserved		Created by STORCK		Inspected by TADJE		Standardisation KÖHLER		Date 2015-12-21		State Final Release	
	Department EC PD - DE		Title SEK 18 male standard conn angled w/o lever 2.9		Doc-Key / ECM-Nr. 100154464/UGD/026/A 500000094595		Rev. A		Page 2/2			
HARTING Electronics GmbH D-32339 Espelkamp			Type TB		Number 09185XXX923							



All rights reserved
Department EC PD - DE

All Dimensions in mm
Original Size DIN A3

Scale
1:1

Free size tol.

Created by
STORCK

Inspected by
TADJE

Standardisation
KOHLER

Date
2015-12-21

State
Final Release

Title
SEK 18 male standard conn angled w/o lever 2.9

Type
TB

Number
09185XXX923

Doc-Key / ECM-Nr.
100154464/UGD/026/A
500000094595

Rev.
A

Page
2/2

Ref.
Sub. TB 09185XXX923 / 500000087654 / 2015-04-08

HARTING Electronics GmbH
D-32339 Espelkamp

Mouser Electronics

Authorized Distributor

Click to View Pricing, Inventory, Delivery & Lifecycle Information:

HARTING:

09185506923