

**PLEASE CHECK WWW.MOLEX.COM FOR LATEST PART INFORMATION**

**Part Number:** [0757910001](#)  
**Status:** **Active**  
**Overview:** [amc0](#)  
**Description:** 0.75mm (.030") Pitch Advanced Mezzanine Card Connector, B+ Style, Right Angle, 170 Circuit, 0.76µm (30µ") Gold (Au), Extended Height, with PCB Locator, Tin (Sn) Tail Plating

**Documents:**

[3D Model](#)  
[Drawing \(PDF\)](#)

[RoHS Certificate of Compliance \(PDF\)](#)

**Agency Certification**

CSA LR19980  
 UL E29179

**General**

Product Family I/O Connectors  
 Series [75791](#)  
 Application Module-to-Board  
 Comments Extended Height  
 Component Type Housing  
 Overview [amc0](#)  
 Product Name AMC  
 Type N/A

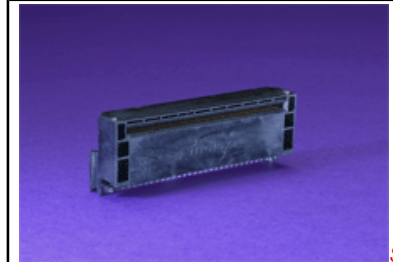
**Physical**

Circuits (Loaded) 170  
 Circuits (maximum) 170  
 Color - Resin Black  
 Durability (mating cycles max) 200  
 Flammability 94V-0  
 Lock to Mating Part None  
 Material - Metal High Performance Alloy (HPA)  
 Material - Plating Mating Gold  
 Material - Plating Termination Tin  
 Material - Resin High Temperature Thermoplastic  
 Orientation Right Angle  
 PCB Locator Yes  
 PCB Retention Yes  
 PCB Thickness - Recommended 2.40mm (.094")  
 Packaging Type Tray  
 Panel Mount No  
 Pitch - Mating Interface 0.75mm (.030")  
 Plating min - Mating 0.762µm (30µ")  
 Plating min - Termination 0.762µm (30µ")  
 Polarized to Mating Part No  
 Surface Mount Compatible (SMC) No  
 Temperature Range - Operating -40°C to +105°C  
 Termination Interface: Style Through Hole - Compliant Pin  
 Wire Size AWG N/A

**Electrical**

Current - Maximum per Contact 1A  
 Shielded No  
 Voltage - Maximum 250V

**Material Info**



Series

image - Reference only

**EU RoHS**

**ELV and RoHS**  
**Compliant**

**REACH SVHC**

Not Reviewed

**Low-Halogen Status**

**Not Reviewed**

**China RoHS**



**Need more information on product environmental compliance?**

Email [productcompliance@molex.com](mailto:productcompliance@molex.com)  
 For a multiple part number RoHS Certificate of Compliance, [click here](#)

Please visit the [Contact Us](#) section for any non-product compliance questions.

**Search Parts in this Series**

[75791Series](#)

**Mates With**

AMC.0 Modules

**Application Tooling | FAQ**

*Tooling specifications and manuals are found by selecting the products below. Crimp Height Specifications are then contained in the Application Tooling Specification document.*

**Global**

Description	Product #
Insertion Module,	<a href="#">0622018301</a>
AMC	
AMC B+ Removal	<a href="#">0621005700</a>
Tool	

## Reference - Drawing Numbers

Application Specification  
Sales Drawing

AS-75800-002, AS-75800-003, AS-75800-999  
SD-75791-001

This document was generated on 01/18/2011

**PLEASE CHECK [WWW.MOLEX.COM](http://WWW.MOLEX.COM) FOR LATEST PART INFORMATION**