



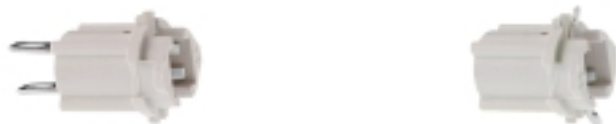
General data

Sockets to accommodate filament lamps and LEDs with bases.

Content

Panel mounting sockets W 2 x 4.6d	3 - 60
Panel mounting sockets W 2 x 4.6d	3 - 61
Panel mounting sockets W 2 x 4.6d	3 - 61
Panel mounting sockets, tubular lamp holders	3 - 62
Panel mounting sockets, tubular lamp holders	3 - 63
Panel mounting sockets BA 15d	3 - 64
Panel mounting sockets BA 15d	3 - 64

Panel mounting sockets W 2 x 4.6d



Technical data

Mechanical design

Mounting see order block
 Terminals see order block
 Lamp socket W 2 x 4.6d

Electrical characteristics

Limit values 42 V/1.5 W

Other specifications

Weight 1 g

3

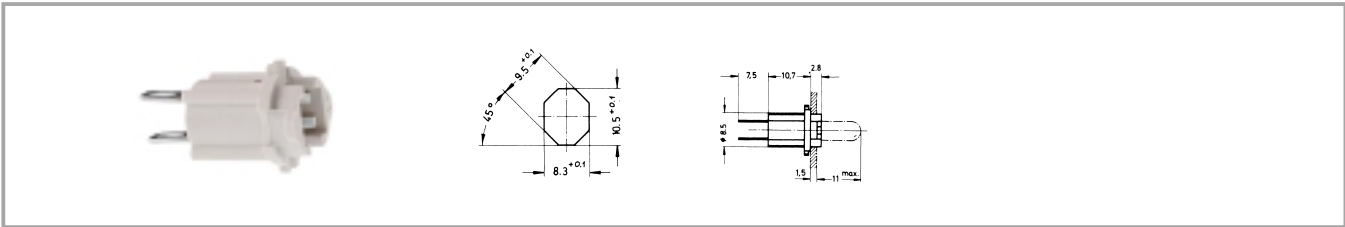
Accessories Panel mounting sockets W 2 x 4.6d

Description	Photo	Order no.	Page
Filament lamp, W 2 x 4.6d base, 24 - 30 V		1.90.120.005/0000	5 - 4
Filament lamp, W 2 x 4.6d base, 60 V		1.90.120.009/0000	5 - 4
Filament lamp, W 2 x 4.6d base, 48 V		1.90.120.010/0000	5 - 4
Filament lamp, W 2 x 4.6d base, 24 V		1.90.120.011/0000	5 - 4
Filament lamp, W 2 x 4.6d base, 6 V		1.90.120.013/0000	5 - 4
LED W 2 x 4.6d superbright, red, 24 V		1.90.690.361/0000	5 - 16
LED W 2 x 4.6d superbright, green, 24 V		1.90.690.362/0000	5 - 16
LED W 2 x 4.6d superbright, yellow, 24 V		1.90.690.363/0000	5 - 16
LED W 2 x 4.6d superbright, blue, 24 V		1.90.690.364/0000	5 - 16
		1.90.690.365/0000	5 - 16

Sockets

Panel mounting sockets

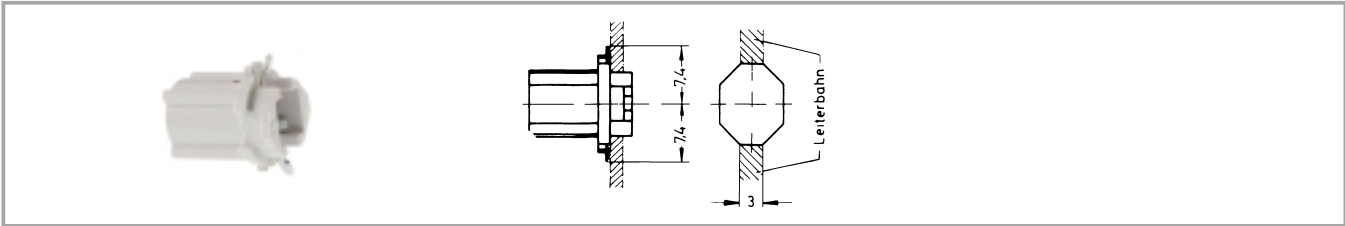
Panel mounting sockets W 2 x 4.6d



Lamp socket	Limit values	Terminals	Mounting	Order no. complete
W 2 x 4.6d	42 V/1.5 W	2 quick connectors 2.8 x 0.5	90° turn	1.72.401.001/0000

Technical data see page 3 - 60

Panel mounting sockets W 2 x 4.6d



Lamp socket	Limit values	Terminals	Mounting	Order no. complete
W 2 x 4.6d	42 V/1.5 W	2 spring contacts	90° turn	1.72.401.021/0000

Technical data see page 3 - 60

Panel mounting sockets, tubular lamp holders



Technical data

Mechanical design

Mounting	cut-out in housing
Terminals	screw terminals
Lamp socket	S 8.5
Insulation group	according to VDE 0110 b/DIN 57110 b

Electrical characteristics


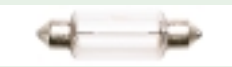
Limit values	2 A/42 V
--------------	----------

Other specifications

Weight	11 g
--------	------

3

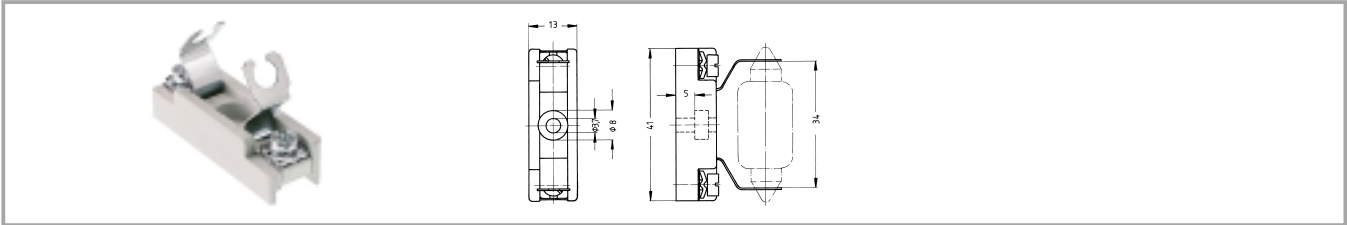
Accessories Panel mounting sockets, tubular lamp holders

Description	Photo	Order no.	Page
Filament lamp, S 8.5 base, 24 V, shape L		1.90.111.003/0000	
Filament lamp, S 8.5 base, 24 V, shape K		1.90.111.103/0000	

Sockets

Panel mounting sockets

Panel mounting sockets, tubular lamp holders



Lamp socket	Limit values	Terminals	Mounting	Order no. complete
S 8.5	2 A/42 V	screw terminals	cut-out in housing	1.02.570.021/0000

Technical data see page 3 - 62

Panel mounting sockets BA 15d



Technical data

Mechanical design

Mounting see order block
 Terminals see order block
 Lamp socket BA 15 d

Electrical characteristics

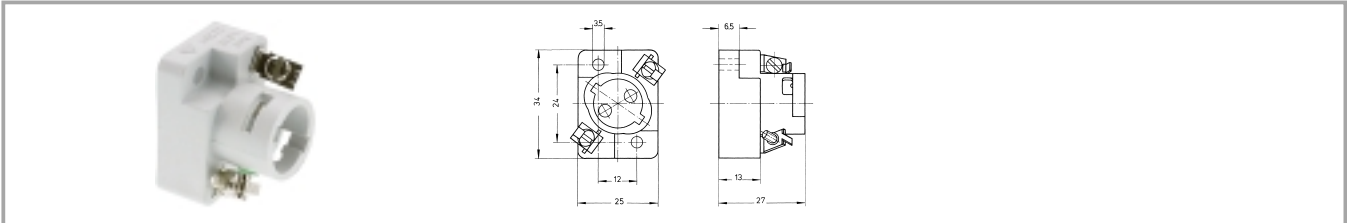
Limit values see order block

Other specifications

Weight see order block

3

Panel mounting sockets BA 15d



Lamp socket	Limit values	Terminals	Mounting	Order no. complete
BA 15 d	250 V/4 W	screw terminals	cut-out in housing	1.02.582.001/0000

Sockets

Technical data see page 3 - 64
 Approvals: VDE 2 A, T135°C.