

- NOTES :
1. MATERIAL :
COVER : STAINLESS STEEL.
ARM : STAINLESS STEEL.
PUSH ROD : HIGH TEMPERATURE THERMOPLASTIC, UL94V-0, BLACK
RIVET : COPPER ALLOY.
 2. PRODUCT SPEC: GS-12-240.
 3. PACKAGING SPEC: GS-14-981.
 4. PART NO DESCRIPTION:
10053869-0 X 5 0 LF
LEAD FREE VERSION (RoHS Compatible).
 5. THIS PRODUCT (10053869-0X50LF) MEETS THE EUROPEAN UNION DIRECTIVE AS DESCRIBED IN GS-22-008.
 6. THE HOUSING WILL WITHSTAND EXPOSURE TO 260°C PEAK TEMPERATURE FOR 10 SECONDS IN A CONVECTION, IR OR VAPOR PHASE REFLOW OVEN.
 7. THE PRODUCT WHERE THE PART NUMBER ENDS IN 'LF' MEET THE CRITERIA SHOWN IN THE NOTES 5 AND 6.

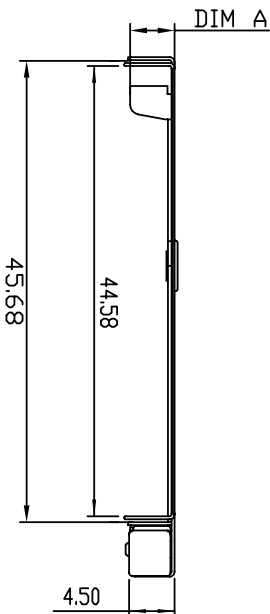


TABLE 1

PART NO.	APPLICABLE TO CF HEADER PART NO.	DIM. A
10053869-0050LF	CF TYPE I Header Normal & Reverse	2.95
10053869-0150LF	CF TYPE II Header Reverse	2.95
10053869-0150LF	CF TYPE II Header Normal	4.40

mod'l. code		tolerances unless otherwise specified		CUSTOMER COPY		FCI	
litr	ecn no	dr	date	linear	angular	projection	title
A	T05-0258	A.C.	11/21/05	.XX ±.20	.XX ±.10	CF CARD EJECTOR-RIGHT PUSH ROD, WITH GROUND	CF
				dr	engr	ALLEN CHANG	2/22/05
				chr	engr	STERLING LIN	2/22/05
				opnd	H.C. LIU	2/22/05	N/A
sheet	revision	A					A4
index	sheet	1					10053869
							1 of 1

ACAP

cage code
22526