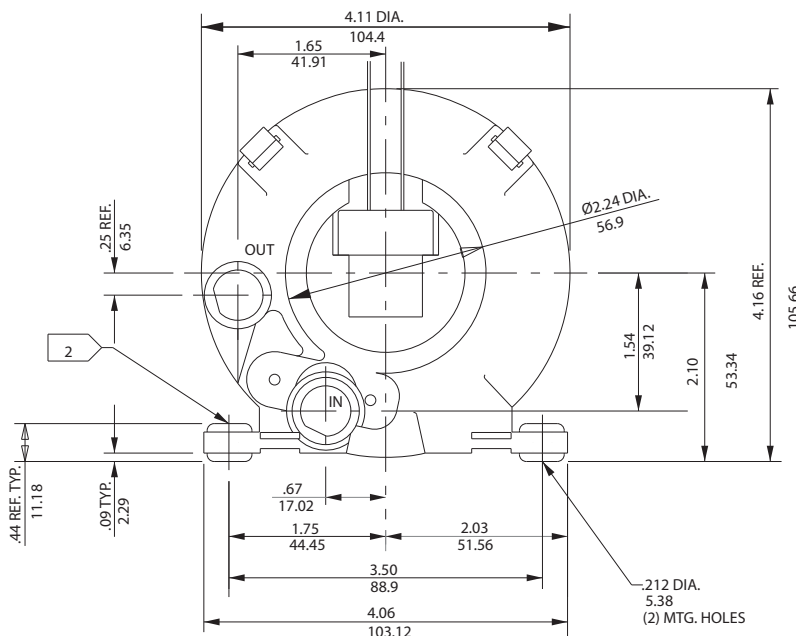


## NOTES

- 1 DRAWING NOT TO SCALE, CONTACT FACTORY FOR SCALE CAD DRAWING.
- 2 CONTACT FACTORY FOR BLOWER MODEL LENGTHS NOT SHOWN.



		Part/Model Number			
Specification	Units	SE2B21	SE3B21	SE62B21	SE2B21A
		081901	036283	037395	080694
Phase - Frequency	-	Single-50/60 Hz	Single-50/60 Hz	-	Single-50/60 Hz
Voltage	AC	110/115	220/230	24	110/115
RPM	RPM	2850/3400	2850/3400	2850/3400	2850/3400
Insulation Class	-	B	B	B	B
Full - Load Amps	Amps (A)	.17/.14	.07/.07	-	.17/.14
Locked Rotor Amps	Amps (A)	.17/.15	.08/.08	-	.17/.15
Shipping Weight	Lbs	1.9	1.9	1.9	1.9
	Kg	0.9	0.9	0.9	0.9

<sup>1</sup> Maximum operating temperature: Motor winding temperature (winding rise plus ambient) should not exceed 140°C for Class F rated motors or 120°C for Class B rated motors. Blower outlet air temperature should not exceed 140°C (air temperature rise plus inlet temperature). Performance curve maximum pressure and suction points are based on a 40°C inlet and ambient temperature. Consult factory for inlet or ambient temperatures above 40°C.

<sup>2</sup> Maximum blower amps corresponds to the performance point at which the motor or blower temperature rise with a 40°C inlet and/or ambient temperature reaches the maximum operating temperature.

This document is for informational purposes only and should not be considered as a binding description of the products or their performance in all applications. The performance data on this page depicts typical performance under controlled laboratory conditions. AMETEK is not responsible for blowers driven beyond factory specified speed, temperature, pressure, flow or without proper alignment. Actual performance will vary depending on the operating environment and application. AMETEK products are not designed for and should not be used in medical life support applications. AMETEK reserves the right to revise its products without notification. The above characteristics represent standard products. For product designed to meet specific applications, contact AMETEK Technical & Industrial Products Sales department.

AMETEK DYNAMIC FLUID SOLUTIONS  
75 North Street, Saugerties, NY 12477  
USA: +1 215-256-6601 - Europe: +49 7703 930909 - Asia: +86 21 5763 1258  
Customer Service Fax: +1 215-256-1338  
www.ametekdfs.com

## Application Specific Blowers

### Minispiral

Instrument Grade Regenerative Blower

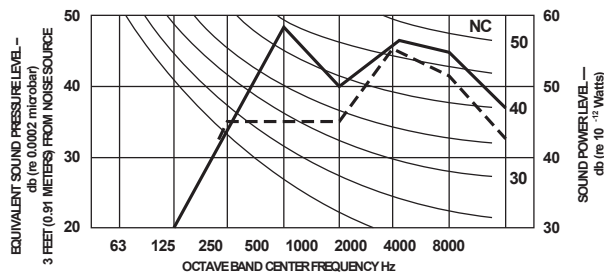
#### FEATURES

- Manufactured in the USA - ISO 9001 and NAFTA compliant
- Maximum flow: 3.5 SCFM
- Maximum pressure: 3.5 IWG
- Maximum vacuum: 3.5 IWG
- Maximum ambient: 40°C
- Glass filled molded phenolic blower housing, cover & impeller
- Shaded pole motor with ball bearings
- Maximum quiet operation to NC-47 (office equipment specification)
- B10 bearing life: 30,000 hours
- Weight: 1.1 lb (0.5 kg)
- Envelope size: 4.18 x 1.83 inches (106.2 x 46.5 mm)

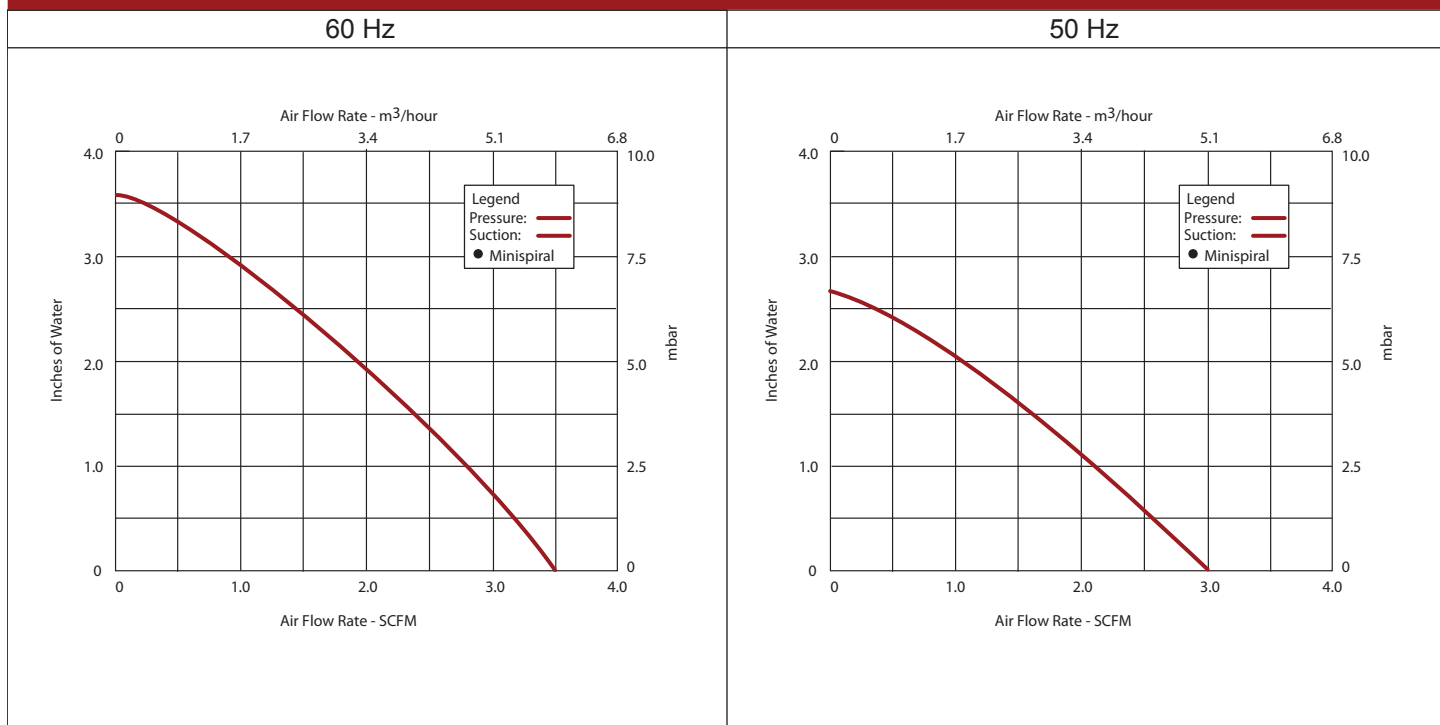
#### OPTIONS

- Sealed units
- International voltage and frequency (Hz)

# ROTRON®



#### Blower Performance at Standard Conditions



This document is for informational purposes only and should not be considered as a binding description of the products or their performance in all applications. The performance data on this page depicts typical performance under controlled laboratory conditions. AMETEK is not responsible for blowers driven beyond factory specified speed, temperature, pressure, flow or without proper alignment. Actual performance will vary depending on the operating environment and application. AMETEK products are not designed for and should not be used in medical life support applications. AMETEK reserves the right to revise its products without notification. The above characteristics represent standard products. For product designed to meet specific applications, contact AMETEK Technical & Industrial Products Sales department.

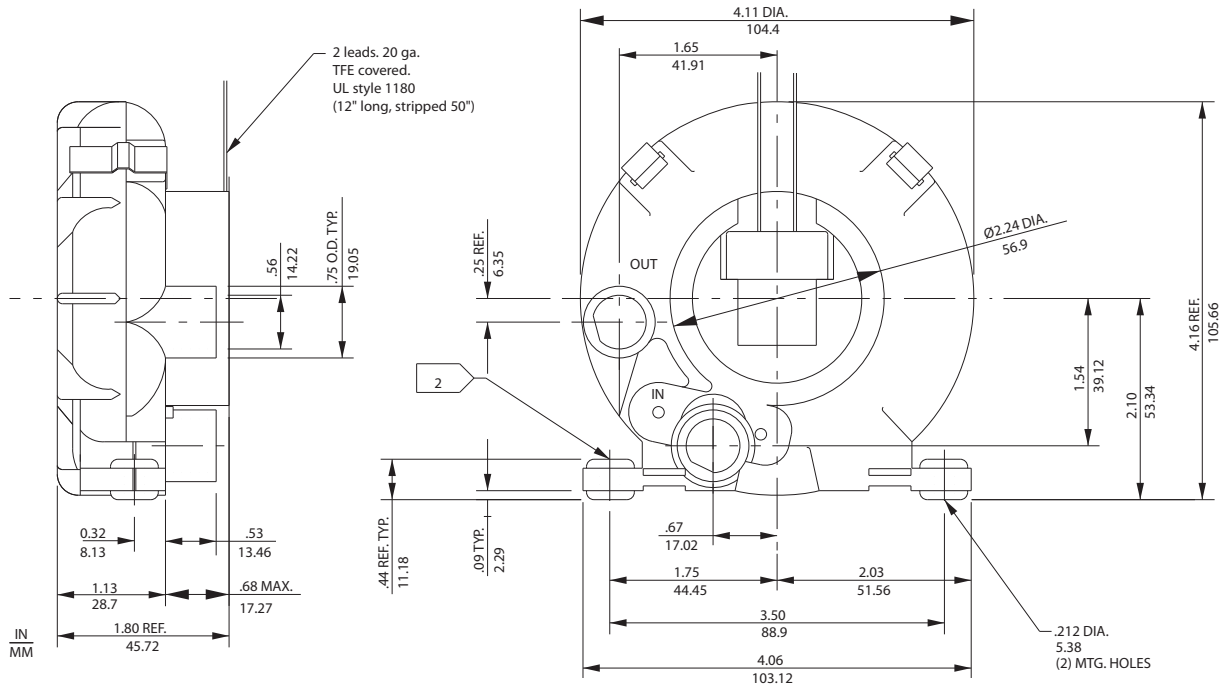
AMETEK DYNAMIC FLUID SOLUTIONS  
75 North Street, Saugerties, NY 12477  
USA: +1 215-256-6601 - Europe: +49 7703 930909 - Asia: +86 21 5763 1258  
Customer Service Fax: +1 215.256.1338  
www.ametekdfs.com

## Application Specific Blowers

### Minispiral MDC

Variable Flow Regenerative Blower

# ROTRON®



#### NOTES

1. DRAWING NOT TO SCALE, CONTACT FACTORY FOR SCALE CAD DRAWING.
2. CONTACT FACTORY FOR BLOWER MODEL LENGTHS NOT SHOWN.

		Part/Model Number	
		SE12V21	SE24V21
Specification	Units	037433	037434
Voltage Range	VDC	9-15	24-32
RPM	RPM	3600-6000	5500-6800
Insulation Class	-	B	B
Full - Load Amps	Amps (A)	0.50-1.0	0.6-0.9
Weight	Lbs	0.86	0.86
	Kg	0.4	0.4

WARNING- ON MDC MODEL EXCEEDING 0.0 AMP MAY DAMAGE CIRCUIT BOARD

This document is for informational purposes only and should not be considered as a binding description of the products or their performance in all applications. The performance data on this page depicts typical performance under controlled laboratory conditions. AMETEK is not responsible for blowers driven beyond factory specified speed, temperature, pressure, flow or without proper alignment. Actual performance will vary depending on the operating environment and application. AMETEK products are not designed for and should not be used in medical life support applications. AMETEK reserves the right to revise its products without notification. The above characteristics represent standard products. For product designed to meet specific applications, contact AMETEK Technical & Industrial Products Sales department.

AMETEK DYNAMIC FLUID SOLUTIONS  
75 North Street, Saugerties, NY 12477  
USA: +1 215-256-6601 - Europe: +49 7703 930909 - Asia: +86 21 5763 1258  
Customer Service Fax: +1 215.256.1338  
www.ametekdfs.com

## Application Specific Blowers

### Minispiral MDC

Variable Flow Regenerative Blower

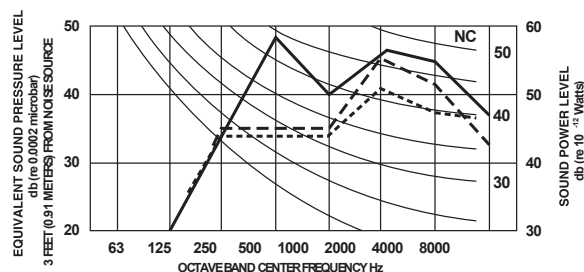
#### FEATURES

- Manufactured in the USA - ISO 9001 and NAFTA compliant
- Maximum flow: 5.8/7.3 SCFM (15/32 volts)
- Maximum pressure: 7.0/10.3 IWG (15/32 volts)
- Maximum vacuum: 7.0/10.3 IWG (15/32 volts)
- Maximum ambient: 40°C
- Glass filled molded phenolic and aluminum blower housing, phenolic cover & impeller
- Shaded pole motor with ball bearings
- Maximum quiet operation to NC-47 (office equipment specification)
- B10 bearing life: 20,000 - 30,000 hours
- Weight: 0.86 lbs (0.39 kg)
- Envelope size: 4.18 x 1.83 inches (106.2 x 46.5 mm)

#### OPTIONS

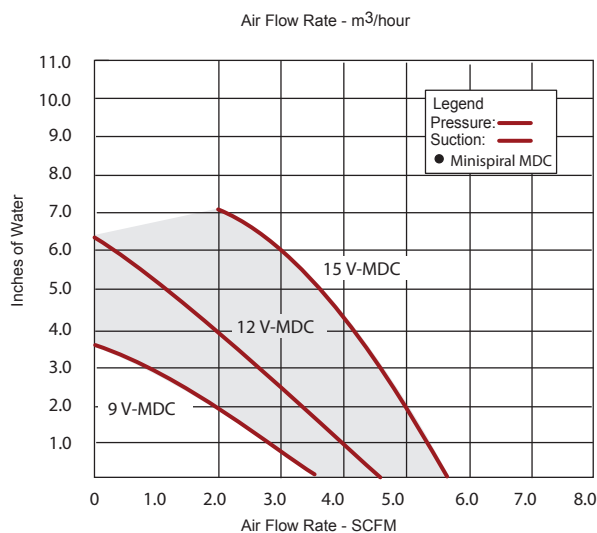
- International and application specific voltages
- Sealed blowers for contamination control
- Electronic speed control

# ROTRON®

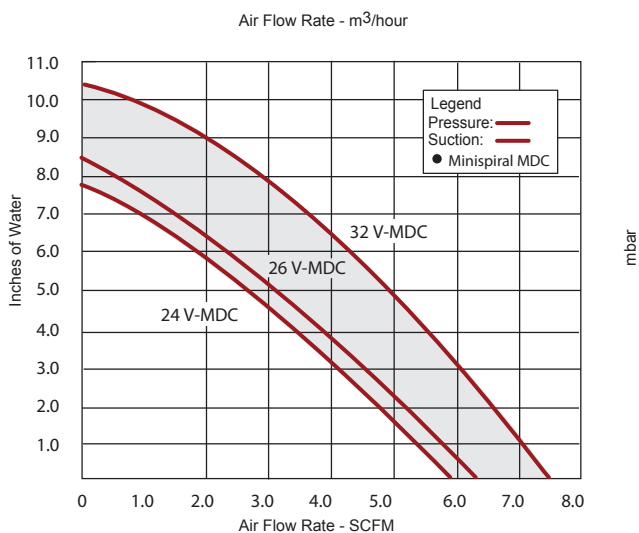


#### Blower Performance at Standard Conditions

##### 12 V-MDC



##### 24 V-MDC



This document is for informational purposes only and should not be considered as a binding description of the products or their performance in all applications. The performance data on this page depicts typical performance under controlled laboratory conditions. AMETEK is not responsible for blowers driven beyond factory specified speed, temperature, pressure, flow or without proper alignment. Actual performance will vary depending on the operating environment and application. AMETEK products are not designed for and should not be used in medical life support applications. AMETEK reserves the right to revise its products without notification. The above characteristics represent standard products. For product designed to meet specific applications, contact AMETEK Technical & Industrial Products Sales department.

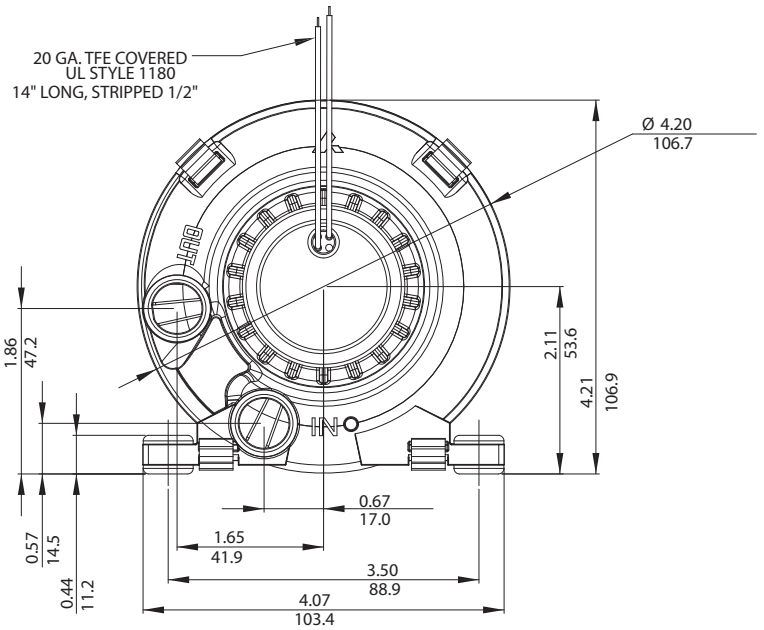
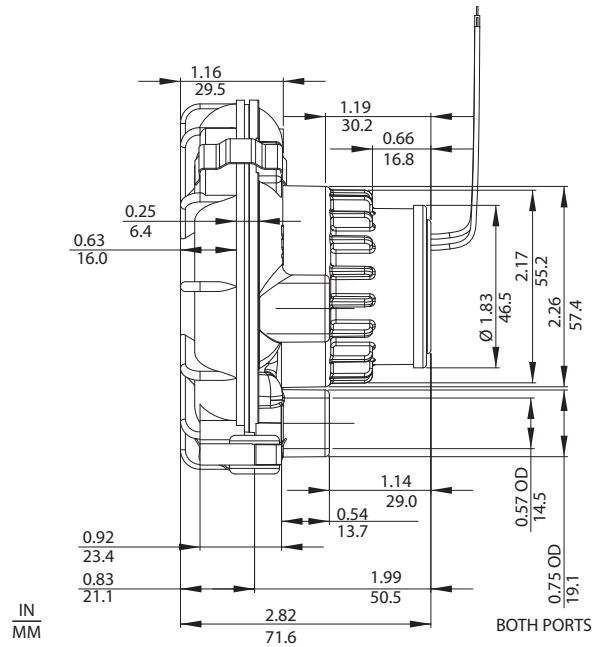
AMETEK DYNAMIC FLUID SOLUTIONS  
75 North Street, Saugerties, NY 12477  
USA: +1 215-256-6601 - Europe: +49 7703 930909 - Asia: +86 21 5763 1258  
Customer Service Fax: +1 215.256.1338  
www.ametekdfs.com

## Application Specific Blowers

### Minispiral 12/24V HDC

Variable Flow Regenerative Blower

# ROTRON®



#### NOTES

- 1 DRAWING NOT TO SCALE, CONTACT FACTORY FOR SCALE CAD DRAWING.
- 2 CONTACT FACTORY FOR BLOWER MODEL LENGTHS NOT SHOWN.

		Part/Model Number	
		SE12RE21	SE24RE21
Specification	Units	081548	080847
Voltage Range	VDC	7.5-15	24-32
RPM	RPM	4400-8750	4400-8750
Insulation Class	-	B	B
Full - Load Amps	Amps (A)	1.2-2.5	1.2-1.6
Weight	Lbs	1.0	1.0
	Kg	0.5	0.5

WARNING – ON HDC MODEL MOTOR IS NOT POLARITY PROTECTED. CHECK POLARITY CAREFULLY BEFORE ENERGIZING BLOWER.

This document is for informational purposes only and should not be considered as a binding description of the products or their performance in all applications. The performance data on this page depicts typical performance under controlled laboratory conditions. AMETEK is not responsible for blowers driven beyond factory specified speed, temperature, pressure, flow or without proper alignment. Actual performance will vary depending on the operating environment and application. AMETEK products are not designed for and should not be used in medical life support applications. AMETEK reserves the right to revise its products without notification. The above characteristics represent standard products. For product designed to meet specific applications, contact AMETEK Technical & Industrial Products Sales department.

AMETEK DYNAMIC FLUID SOLUTIONS  
75 North Street, Saugerties, NY 12477  
USA: +1 215-256-6601 - Europe: +49 7703 930909 - Asia: +86 21 5763 1258  
Customer Service Fax: +1 215.256.1338  
www.ametekdfs.com

F 5

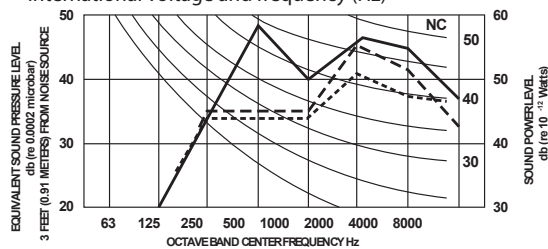
**AMETEK®**  
PRECISION MOTION CONTROL  
DYNAMIC FLUID SOLUTIONS

## FEATURES

- Manufactured in the USA - ISO 9001 and NAFTA compliant
- 12 VDC operation: 7.5-15 VDC
- 24 VDC operation: 15-32 VDC
- Maximum flow: 8.5 SCFM (15)
- Maximum pressure: 20.7 IWG (15)
- Maximum vacuum: 20.7 IWG (15)
- Maximum ambient: 40°C
- Glass filled molded phenolic and aluminum blower housing, phenolic cover & impeller
- Brushless DC motor with integrated control electronics
- Maximum quiet operation to NC-47 (office equipment specification)
- Stainless steel ball bearings permanently lubricated for B10 bearing life: 20,000 - 30,000 hours
- Weight: 1.9 lbs (0.86 kg)
- Envelope size: 4.18 x 1.83 inches (106.2 x 46.5 mm)

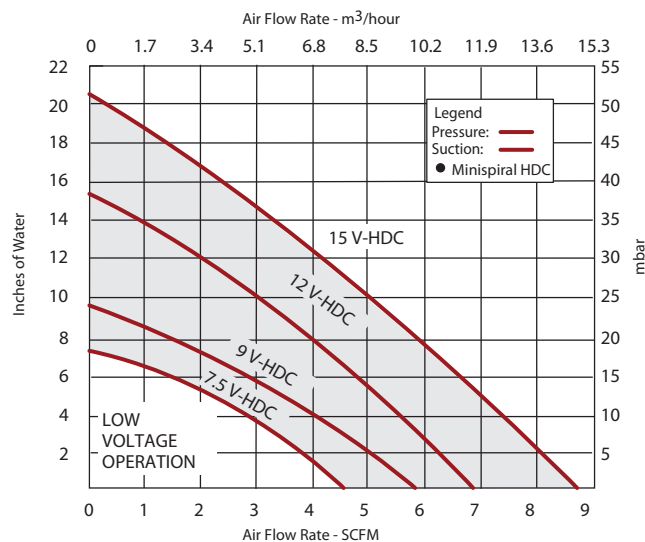
## OPTIONS

- International and application specific voltages
- Sealed blowers for contamination control
- Electronic speed control
- Low voltage option
- International voltage and frequency (Hz)



## Blower Performance at Standard Conditions

### Minispiral HDC



This document is for informational purposes only and should not be considered as a binding description of the products or their performance in all applications. The performance data on this page depicts typical performance under controlled laboratory conditions. AMETEK is not responsible for blowers driven beyond factory specified speed, temperature, pressure, flow or without proper alignment. Actual performance will vary depending on the operating environment and application. AMETEK products are not designed for and should not be used in medical life support applications. AMETEK reserves the right to revise its products without notification. The above characteristics represent standard products. For product designed to meet specific applications, contact AMETEK Technical & Industrial Products Sales department.

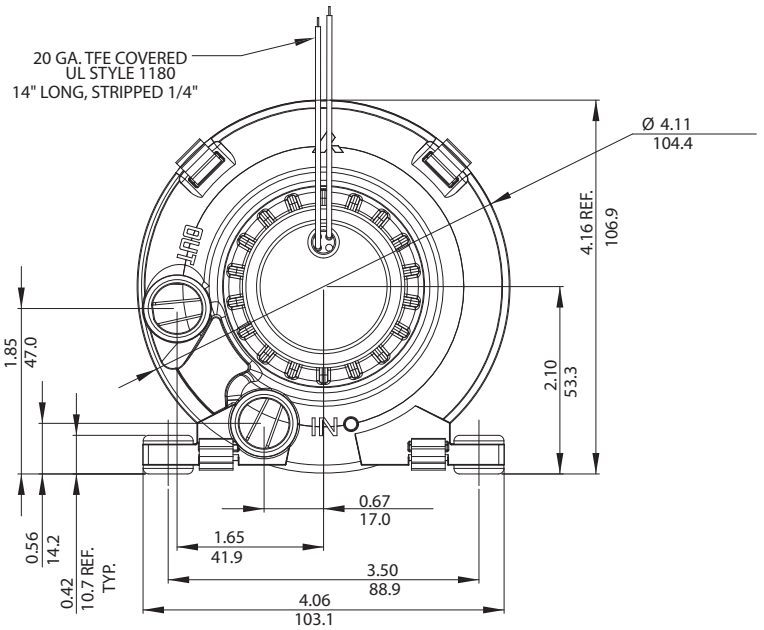
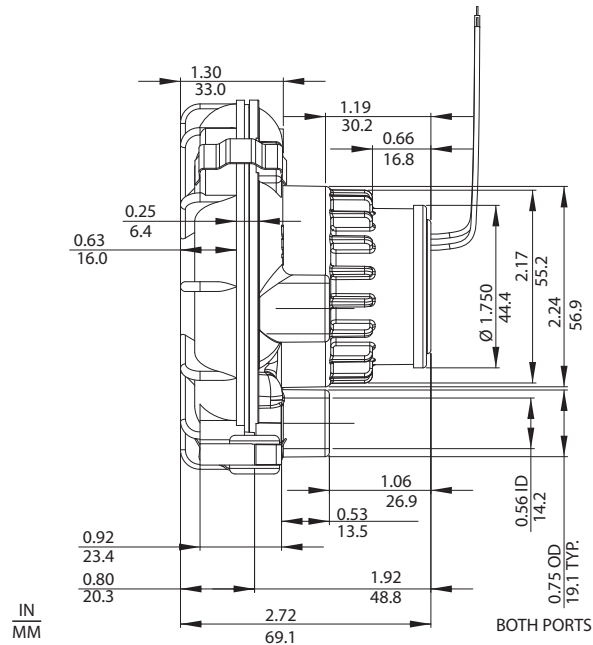


## Application Specific Blowers

### Minispiral 12V HDC Extra Flow / Extra Wide Fat Boy

Variable Flow Regenerative Blower

# ROTRON®



#### NOTES

- 1 DRAWING NOT TO SCALE, CONTACT FACTORY FOR SCALE CAD DRAWING.
- 2 CONTACT FACTORY FOR BLOWER MODEL LENGTHS NOT SHOWN.

		Part/Model Number
		SE12RE21A
		081881
Specification	Units	
RPM	RPM	7397 - 13205
Voltage Range	VDC	7.5 - 15
Insulation Class	-	B
Full - Load Amps	Amps (A)	2.7 - 6.2
Weight	Lbs	2.5
	Kg	1.1

WARNING – ON HDC MODEL MOTOR IS NOT POLARITY PROTECTED. CHECK POLARITY CAREFULLY BEFORE ENERGIZING BLOWER.

This document is for informational purposes only and should not be considered as a binding description of the products or their performance in all applications. The performance data on this page depicts typical performance under controlled laboratory conditions. AMETEK is not responsible for blowers driven beyond factory specified speed, temperature, pressure, flow or without proper alignment. Actual performance will vary depending on the operating environment and application. AMETEK products are not designed for and should not be used in medical life support applications. AMETEK reserves the right to revise its products without notification. The above characteristics represent standard products. For product designed to meet specific applications, contact AMETEK Technical & Industrial Products Sales department.

AMETEK DYNAMIC FLUID SOLUTIONS  
75 North Street, Saugerties, NY 12477  
USA: +1 215-256-6601 - Europe: +49 7703 930909 - Asia: +86 21 5763 1258  
Customer Service Fax: +1 215.256.1338  
www.ametekdfs.com

F 7

**AMETEK®**  
PRECISION MOTION CONTROL  
DYNAMIC FLUID SOLUTIONS

## Application Specific Blowers

### Minispiral 12V HDC Extra Flow / Extra Wide Fat Boy

Variable Flow Regenerative Blower

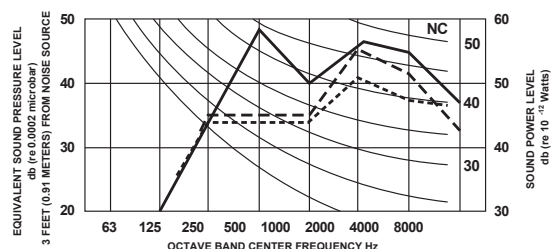
# ROTRON®

## FEATURES

- Manufactured in the USA - ISO 9001 and NAFTA compliant
- Maximum flow: 12.6 SCFM (15)
- Maximum pressure: 26 IWG (15)
- Maximum vacuum: 26 IWG (15)
- Maximum ambient: 40°C
- Glass filled molded phenolic blower, cover & impeller, aluminum housing
- Brushless DC motor with integrated control electronics
- Stainless steel ball bearings permanently lubricated for B10 bearing 20,000 - 30,000 hours
- Weight: 1.9 lbs (0.86 kg)
- Compact high performance design: 4.18 x 1.83 inches (106.2 x 46.5 mm)

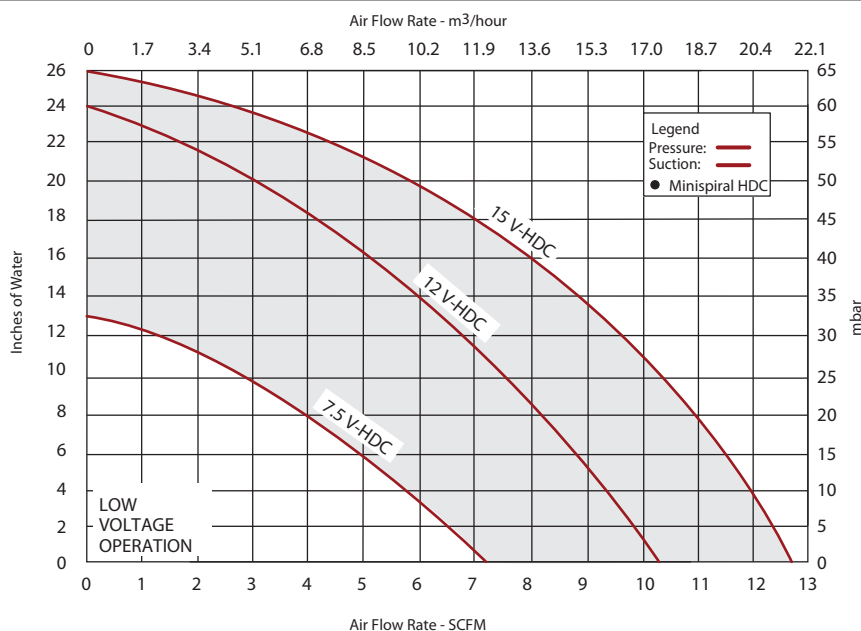
## OPTIONS

- International and application specific voltages
- Sealed blowers for contamination control
- Electronic speed control
- Low voltage option
- Speed sensing output (FPS)



## Blower Performance at Standard Conditions

### Minispiral HDC



This document is for informational purposes only and should not be considered as a binding description of the products or their performance in all applications. The performance data on this page depicts typical performance under controlled laboratory conditions. AMETEK is not responsible for blowers driven beyond factory specified speed, temperature, pressure, flow or without proper alignment. Actual performance will vary depending on the operating environment and application. AMETEK products are not designed for and should not be used in medical life support applications. AMETEK reserves the right to revise its products without notification. The above characteristics represent standard products. For product designed to meet specific applications, contact AMETEK Technical & Industrial Products Sales department.

AMETEK DYNAMIC FLUID SOLUTIONS  
75 North Street, Saugerties, NY 12477  
USA: +1 215-256-6601 - Europe: +49 7703 930909 - Asia: +86 21 5763 1258  
Customer Service Fax: +1 215.256.1338  
www.ametekdfs.com

F 8

**AMETEK®**  
PRECISION MOTION CONTROL  
DYNAMIC FLUID SOLUTIONS