

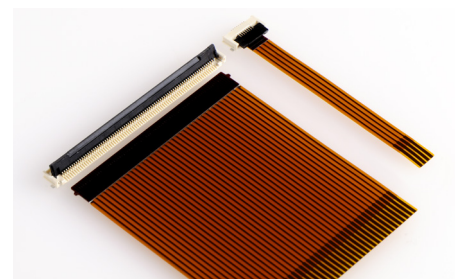
# FFC/FPC Connectors, 0.50mm Pitch, Double Bottom Contacts



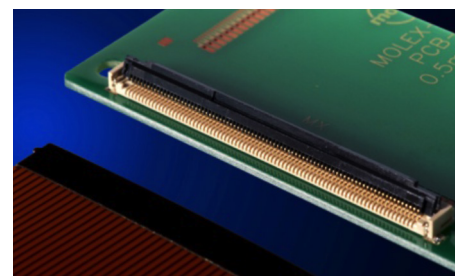
Molex's 0.50mm pitch FFC/FPC connectors with double the contacts per circuit offer the best combination of signal reliability, compactness, wide circuit size range and cable style choices of any similar version in the market

## Features and Benefits

Contact design with two lower contacts per circuit	Ensures a clean mating interface and provides superior contact reliability
Cable ear-tab locking feature	Provides cable alignment, high retention force and easy actuation
Zero insertion force	Facilitates easy cable insertion
Wide range of circuit sizes (4-80)	Offers design flexibility
Vacuum pick-and-place area on top of housing	Provides easier board assembly and cost savings versus separate pick-and-place tape



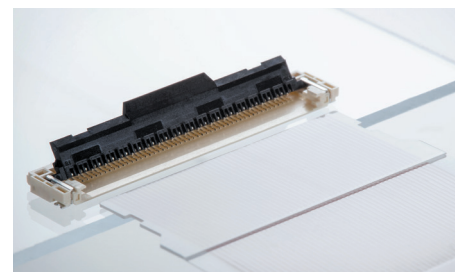
Standard Cable Type, 1.90mm Height (FD19)  
(505110 Series)



Standard Cable Type, 2.50mm Height  
(502790 Series)



Non-standard Cable Type, 2.50mm Height  
(104060 Series)



Notched Cable Type, 1.50mm Height  
(104234 Series)

## Applications

### Automobile Infotainment

- Display Audio
- Car Navigation

### Consumer

- Flat Panel TV
- Portable Game
- Personal Navigation Equipment

### Datacommunications

- Optical Disk Drives
- Tablet and Notebook PCs
- Printers and Copiers



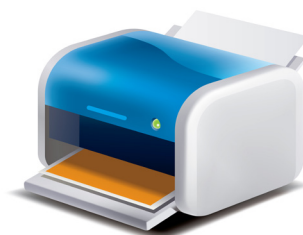
Flat Panel TV



Automobile Infotainment



Optical Disk Drives



Printer

# FFC/FPC Connectors, 0.50mm Pitch, Double Bottom Contacts



## Specification

### REFERENCE INFORMATION

Packaging: Embossed tape  
Designed In: Millimeters  
RoHS: Yes  
Halogen Free: Low Halogen

### ELECTRICAL

Voltage (max.): 50V  
Current (max.): 0.5A  
Contact Resistance: 40 milliohms max.  
Dielectric Withstanding Voltage:  
505110/502790: 125V AC (rms)  
104060/104234: 250V AC (rms)  
Insulation Resistance: 50 Megohm min.

### MECHANICAL

Durability (min.): 25 cycles

### PHYSICAL

Housing: LCP (Beige); 104234 Series (Natural)  
Actuator: Polyamide Glass Filled (Black)  
Terminal: Phosphor Bronze  
Fitting Nail: Phosphor Bronze

### PLATING

Contact Area: Separated Gold  
Solder Tail Area: Separated Gold  
Underplating: Nickel  
Operating Temperature:  
505110/502790: -40 to +105°C  
104060/104234: -20 to +85°C

## Ordering Information

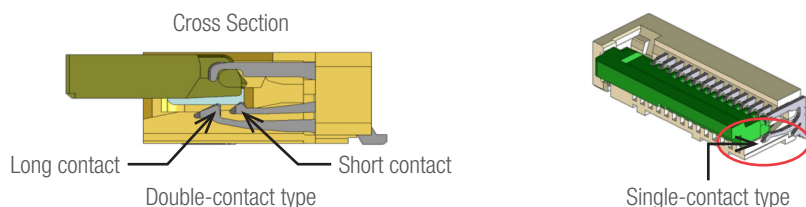
Order No.	Height	Depth	Cable Type	Circuit Size
104234-**-17	1.50mm	5.30mm	Notched	51
505110-**-92	1.90mm		Standard	04-19
505110-**-91			Standard	20, 22, 24, 26, 28, 30, 35, 40, 45, 50, 60, 64, 68, 70, 80
502790-**-91	2.50mm		Standard	30, 40, 50, 60, 64, 80
104060-**-17		Non-standard	60, 80	

(Replace \*\* with circuit size)

## Additional Product Features

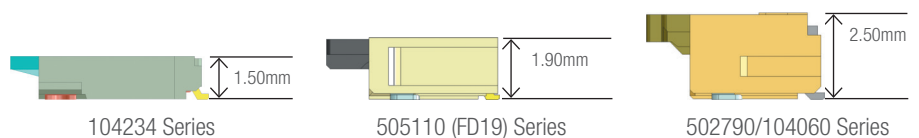
### Double-Bottom-Contact Terminal Design

The double-bottom-contact terminal design (right) removes dust and contaminants better than single-bottom-contact terminals, while providing stable redundant contact forces for secure electrical reliability.



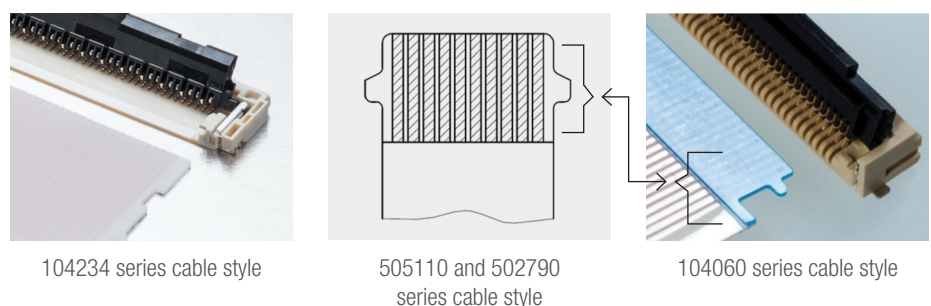
### Ultra-Low-Profile Feature

Various profile heights to meet different design requirements.



### Cable Locking Features

Various cable locking features to meet different design requirements.



[www.molex.com/product/smt\\_ffc-fpc.html](http://www.molex.com/product/smt_ffc-fpc.html)