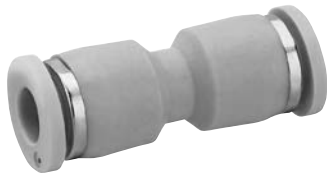


Pneumatic connection technologies ► Push-In fittings

Series QR1-S standard

► Straight plug connector ► push-in fitting ► Ø5/32 - Ø1/2 ► push-in fitting ► Ø5/32 - Ø1/2 ► QR1-S-RSK



00117312

Ambient temperature min./max.
Working pressure min./max.

+32 °F / +140 °F
-13 psi / 145 psi

Materials:

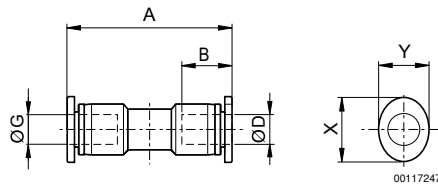
Screw
Housing
Seal
Tooth lock washer
Release ring
Release ring holder

nickel-plated
Polybutyleneterephthalate
Acrylonitrile Butadiene Rubber
Stainless steel
Polyoxymethylene
Die cast zinc; Brass, nickel-plated

Technical Remarks

- The series QR1 (plastic) and QR2 (metal) can not be combined
- These pneumatic components with NPT or inch thread dimensions are only available from our US sales organization.
- For further information about assembling and tolerances of adaptable tubing, see the section "Technical information".

Dimensions in inches



00117247

Dimensions in inches

Part No.	Port D	Port G	A	B	X	Y	Delivery quantity [Piece]	Weight [lbs]				
R432000154	Ø5/32	Ø5/32	1.27	0.63	0.47	0.4	10	0.011				
R432000153	Ø5/16	Ø5/16	1.54	0.73	0.63	0.55	10	0.0198				
R432000152	Ø3/8	Ø3/8	1.67	0.83	0.75	0.67	10	0.0308				
R432000151	Ø1/4	Ø1/4	1.4	0.67	0.552	0.47	10	0.011				
R432000150	Ø1/2	Ø1/2	1.85	0.89	0.91	0.83	10	0.0396				