

DESCRIPTION: POWER / SIGNAL - SOLDER CUP - MALE - MACHINED

SPECIFICATIONS:

- ELECTRICAL:

INSULATOR RESISTANCE:

DIELECTRIC WITHSTANDING:

OPERATING TEMPERATURE:

POWER CONTACT RESISTANCE:

SIGNAL CONTACT RESISTANCE:

POWER PINS:

SIGNAL PINS:

5 G OHMS Min.

1,000VAC r.m.s.

-55° C ~ +155° C

1.0 Milliohms Max.

2.7 Milliohms Max.

SEE PART No. BELOW

5 AMPS
- MECHANICAL:

CONTACT INSERTION FORCE:

CONTACT SEPARATOR FORCE:

4.5 Kg Max.

0.3Kg Min.
- MATERIALS:

CONTACTS:

INSULATOR:

COPPER ALLOY

PBT UL94V-0 RATED, BLK

230°C PROCESS TEMP.

STEEL

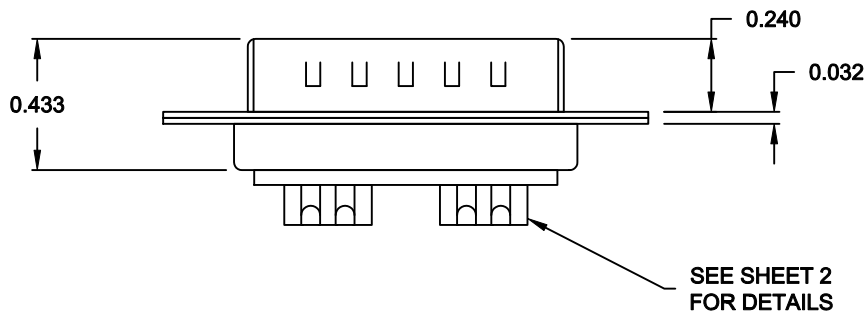
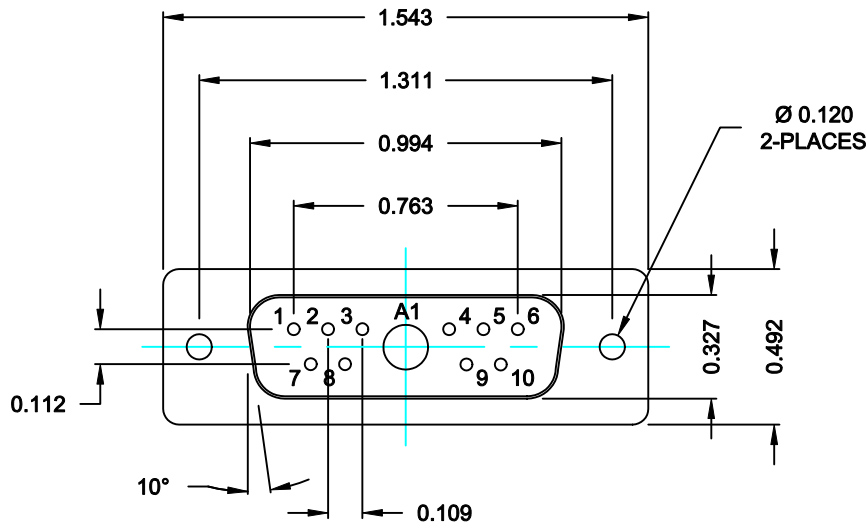
F08 FLEXIBLE ADHESIVE
- FINISH:

SHELL:

CONTACTS:

NICKEL

FULL GOLD FLASH




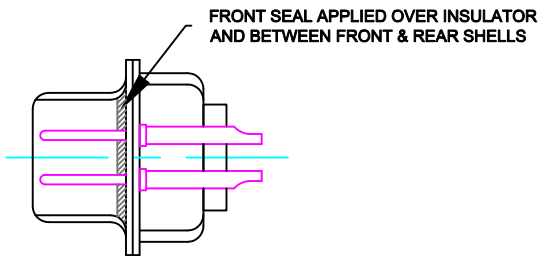
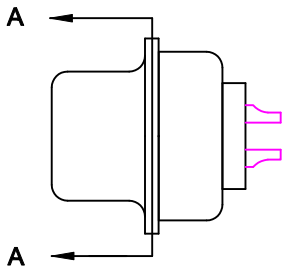
680S11W1103L001

NO POWER CONTACTS

MEETS IP67 STANDARDS
(SEE PAGE 2 FOR SEALING DETAILS)

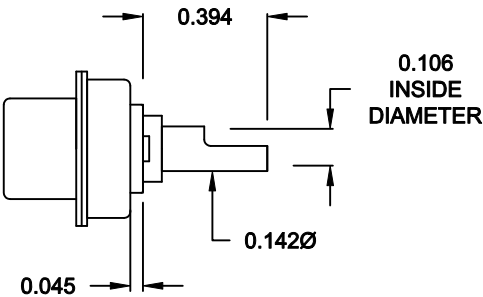
RoHS COMPLIANT

	THESE DRAWINGS AND SPECIFICATIONS ARE THE PROPERTY OF NorComp AND SHALL NOT BE REPRODUCED, COPIED OR USED AS THE BASIS FOR THE MANUFACTURE OF SALE OF APPARATUS WITHOUT WRITTEN PERMISSION.	DRAWN: M. SIGMON		DATE: 06-10-13		
		CHECKED: X		DATE: X		
NorComp		SCALE: N.T.S.	SHEET 1		OF 2	REV 0
		DWG NO. 680S11W1103L001				

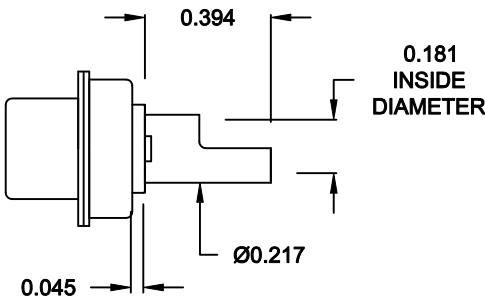


DETAIL A-A
SHOWN FOR REFERENCE ONLY

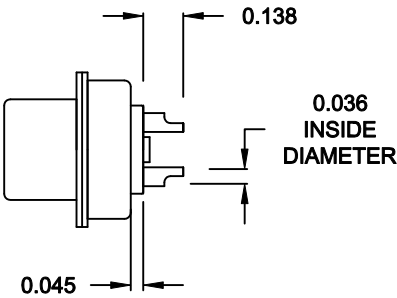
NOTE: SIGNAL AND POWER CONTACTS
COME PRE-LOADED INTO INSULATORS



20 AMP POWER CONTACTS
ACCEPTS UP TO 12 AWG WIRE




40 AMP POWER CONTACTS
ACCEPTS UP TO 8 AWG WIRE



SIGNAL CONTACTS
ACCEPTS UP TO 20 AWG WIRE

RoHS COMPLIANT

	THESE DRAWINGS AND SPECIFICATIONS ARE THE PROPERTY OF NorComp AND SHALL NOT BE REPRODUCED, COPIED OR USED AS THE BASIS FOR THE MANUFACTURE OF SALE OF APPARATUS WITHOUT WRITTEN PERMISSION.	DRAWN: M.SIGMON		DATE: 06-10-13	
		CHECKED: X		DATE: X	
NorComp	SCALE: N.T.S.	SHEET 2		OF 2	REV 0
	DWG NO. 680S11W1103LYY1				

Mouser Electronics

Authorized Distributor

Click to View Pricing, Inventory, Delivery & Lifecycle Information:

NorComp:

[680S11W1103L201](#) [680S11W1103L401](#)