

Features

- Two, three and four-point configurations
- Quick connect design
- Easy installation
- Versatile configurations

Applications

- Bourns® Model 1210 and 1250 AC Surge Protective Devices (SPDs)

1200-BB Series Bus Bar Accessory

General Information

The Bourns® Model 1200-BB Series bus bar accessory provides a quick solution for combining the ground connection on two to four Model 1210 or 1250 Series SPDs. The bus bar is installed at the bottom of the SPD, providing a bridge that connects the individual ground points. After installation of the bus bar, a single ground wire can then be used to complete the installation, saving wiring time.

Bus Bar Part Number	Configuration	Common Grounding Point	Notes
1200-BB-2P			The Model 1200-BB-2P allows for two single-pole devices to share one common grounding point.
1200-BB-3P			The Model 1200-BB-3P allows for three single-pole devices to share one common grounding point.
1200-BB-4P			The Model 1200-BB-4P allows for four single-pole devices to share one common grounding point.

BOURNS®

Asia-Pacific: Tel: +886-2 2562-4117 • Fax: +886-2 2562-4116

Europe: Tel: +41-41 768 5555 • Fax: +41-41 768 5510

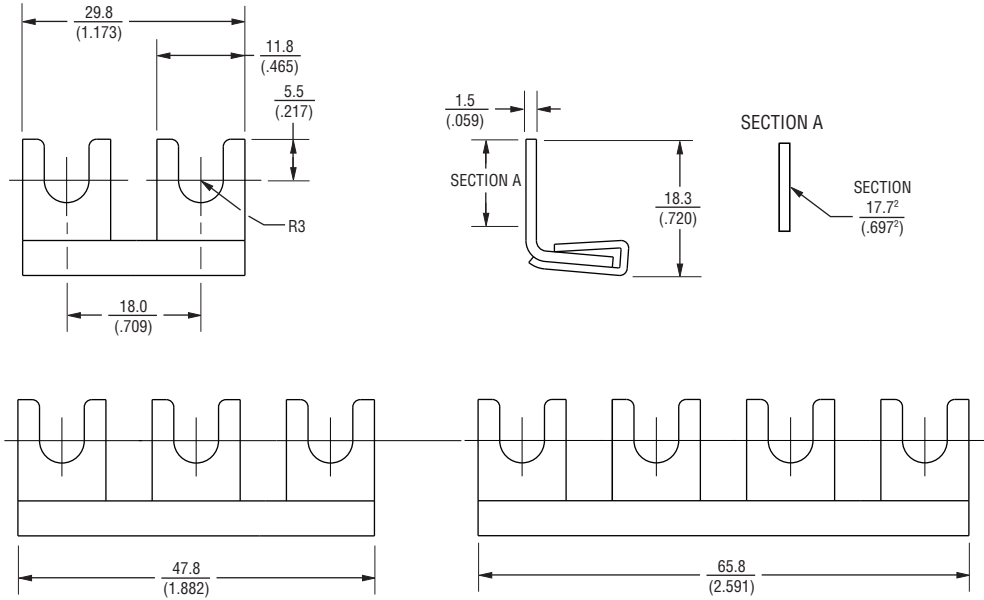
The Americas: Tel: +1-951 781-5500 • Fax: +1-951 781-5700

www.bourns.com

1200-BB Series Bus Bar Accessory

BOURNS®

Product Dimensions



DIMENSIONS: $\frac{\text{MM}}{(\text{INCHES})}$

REV. 05/13

Specifications are subject to change without notice.
The device characteristics and parameters in this data sheet can and do vary in different applications and actual device performance may vary over time.
Users should verify actual device performance in their specific applications.

Mouser Electronics

Authorized Distributor

Click to View Pricing, Inventory, Delivery & Lifecycle Information:

Bourns:

[1200-BB-3P](#) [1200-BB-4P](#) [1200-BB-2P](#)