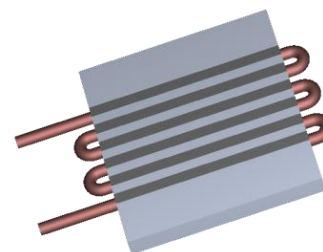


Full Buried Tube Liquid Cold Plates

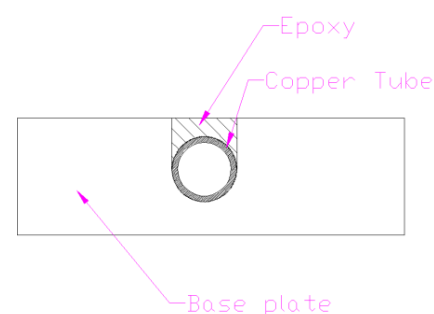
Wakefield- Vette's fully buried tube liquid cold plates have the ability to cool both sides of the cold plate because of it's positioning within the base plate. Another key feature of the fully buried tube is that it is not exposed to the outside environment. Some engineers prefer the epoxy layer above the tube to protect the tube from leakage.

Key Specifications:

- Base Plate: Extruded Aluminum
- Copper Tube Material: .375" OD x .049" wall
- Thermal Epoxy fill with high thermal conductivity

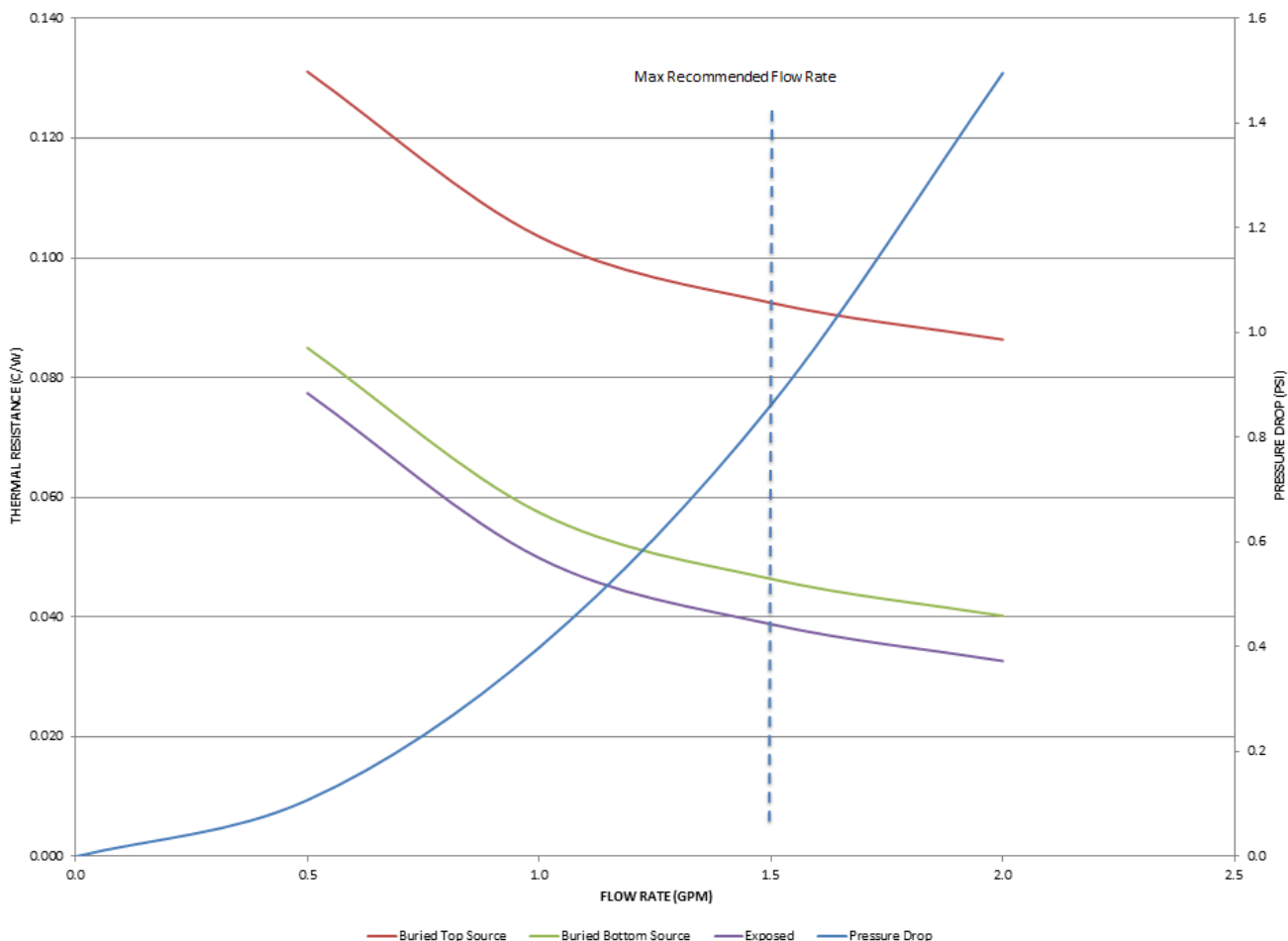


| Part Number | Description | "X" Dimension Inches | Passes | Figure |
|-------------|-------------------------------------|----------------------|--------|--------|
| 120959 | Fully Buried Tube 2- Pass Coldplate | N/A | 2 | 1 |
| 120960 | Fully Buried Tube 4- Pass Coldplate | 6.00 | 4 | 2 |
| 120961 | Fully Buried Tube 4- Pass Coldplate | 12.00 | 4 | 2 |
| 120962 | Fully Buried Tube 6- Pass Coldplate | 6.00 | 6 | 3 |
| 120963 | Fully Buried Tube 6- Pass Coldplate | 12.00 | 6 | 4 |
| 120964 | Fully Buried Tube 6- Pass Coldplate | 24.00 | 6 | 5 |



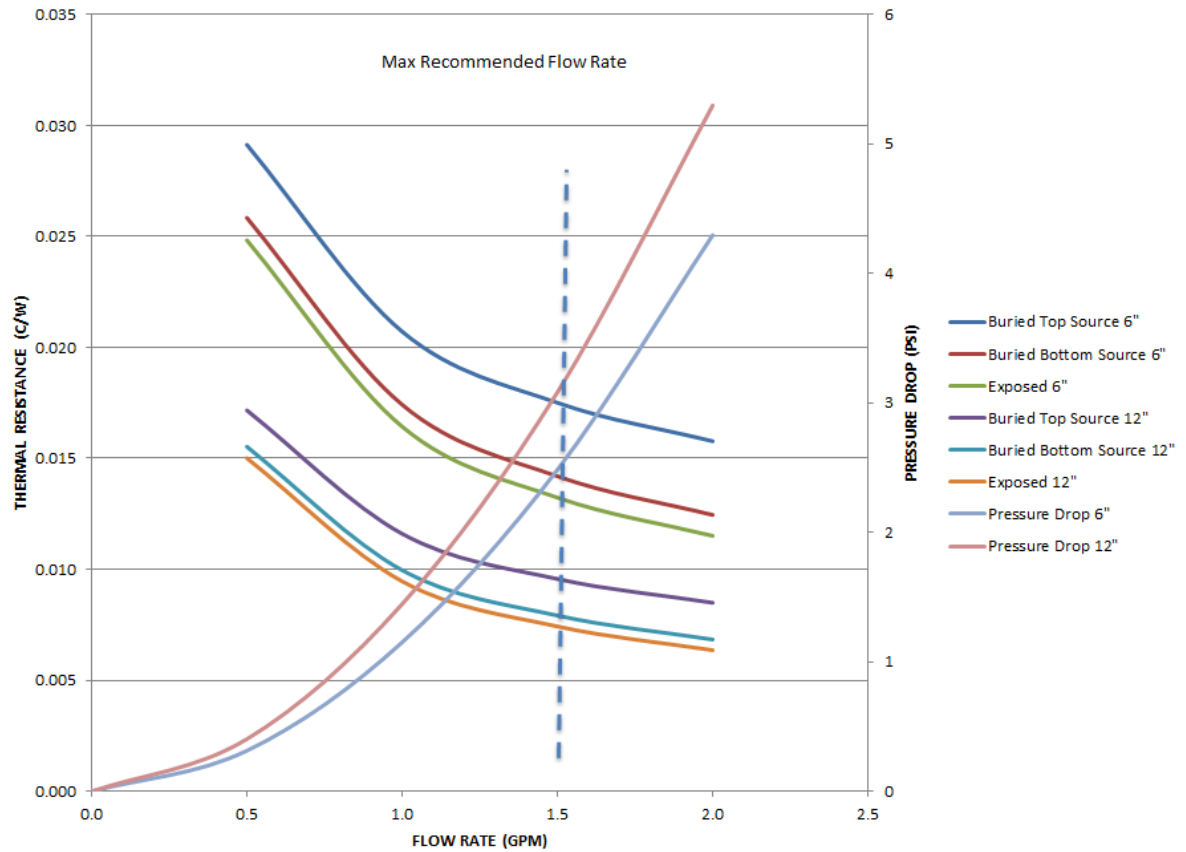
2 Pass

Thermal Performance:



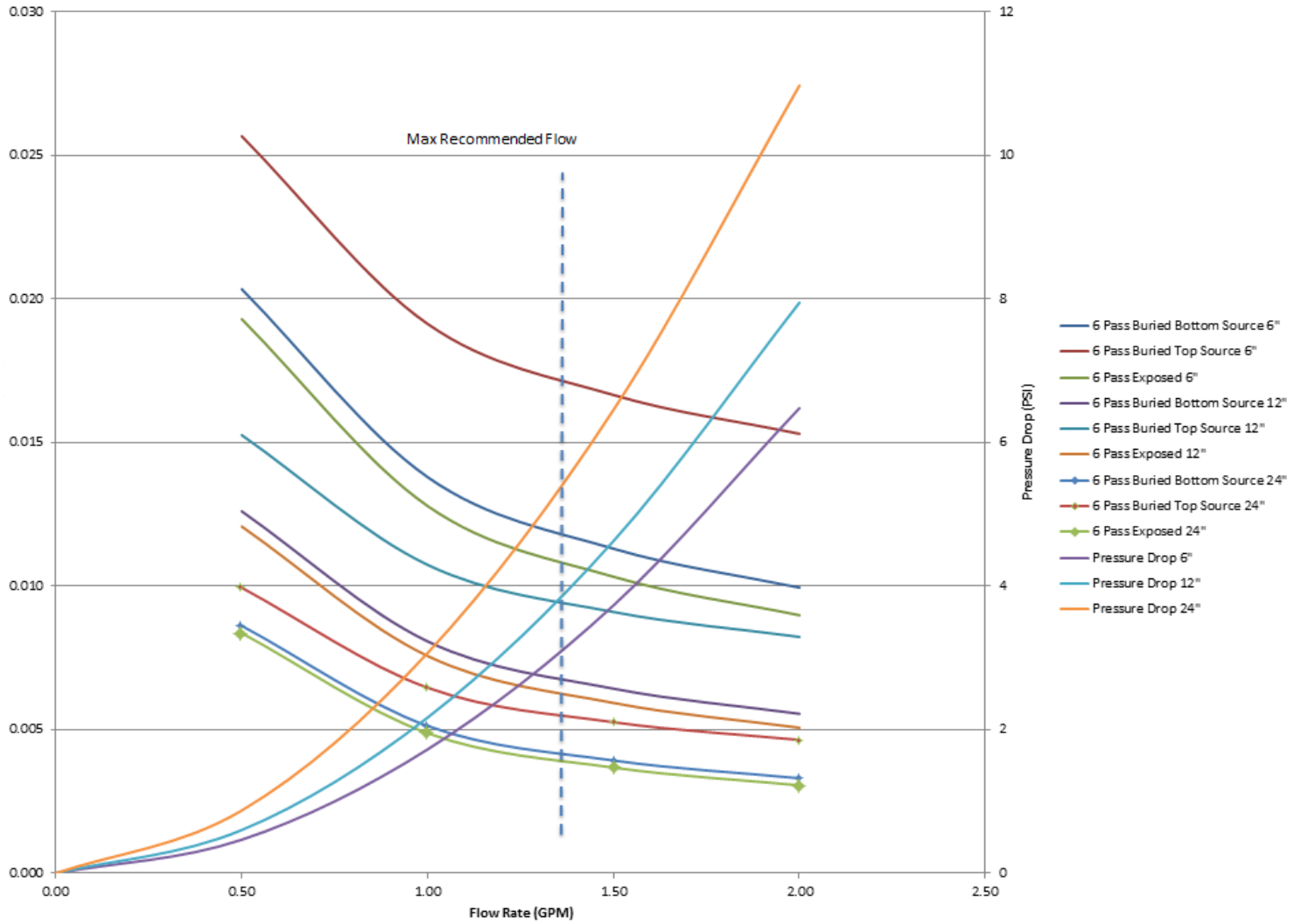
4 Pass

Thermal Performance:



6 Pass

Thermal Performance:



Full Buried Tube Liquid Cold Plates



Figure #1

- #120959

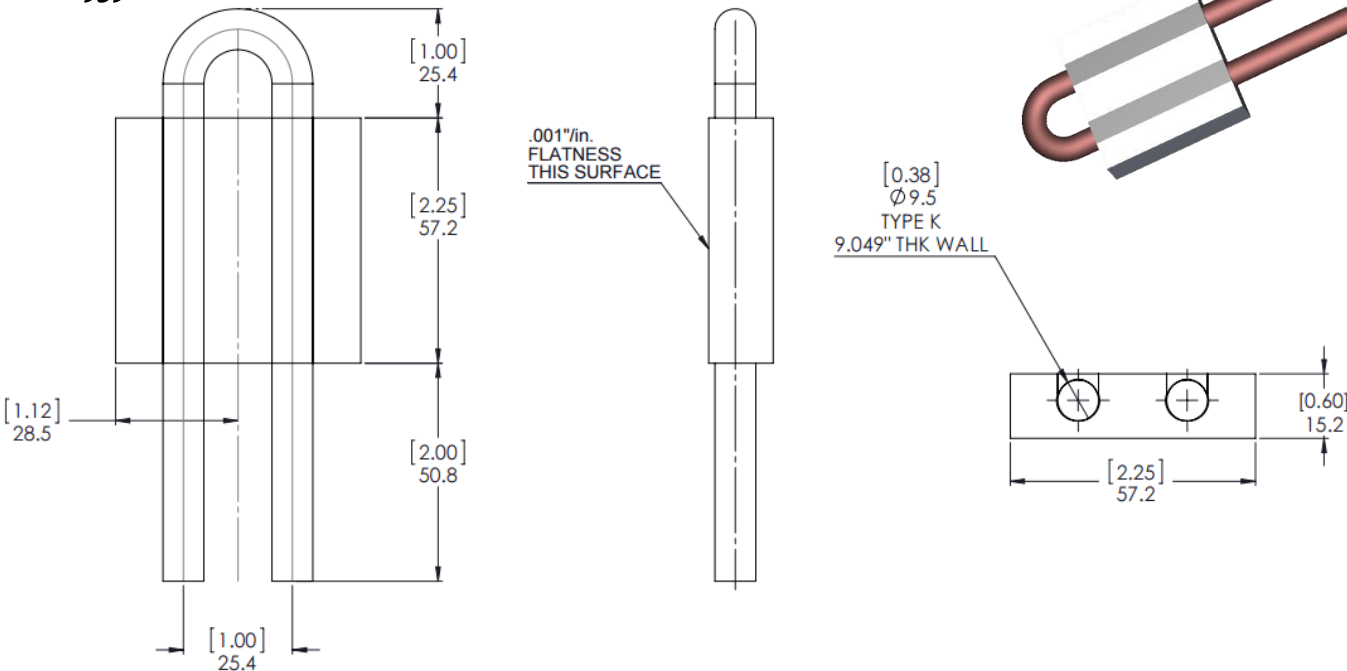


Figure #2

- #120960 & #120961

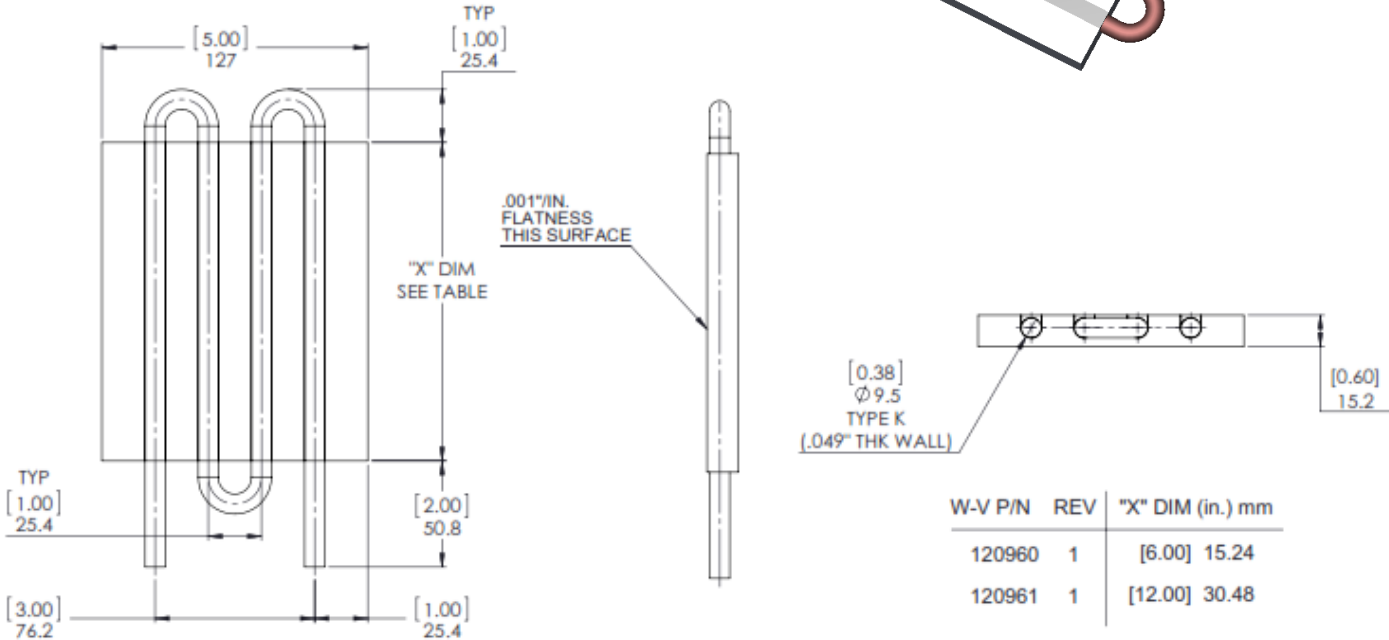


Figure #3

- #120962

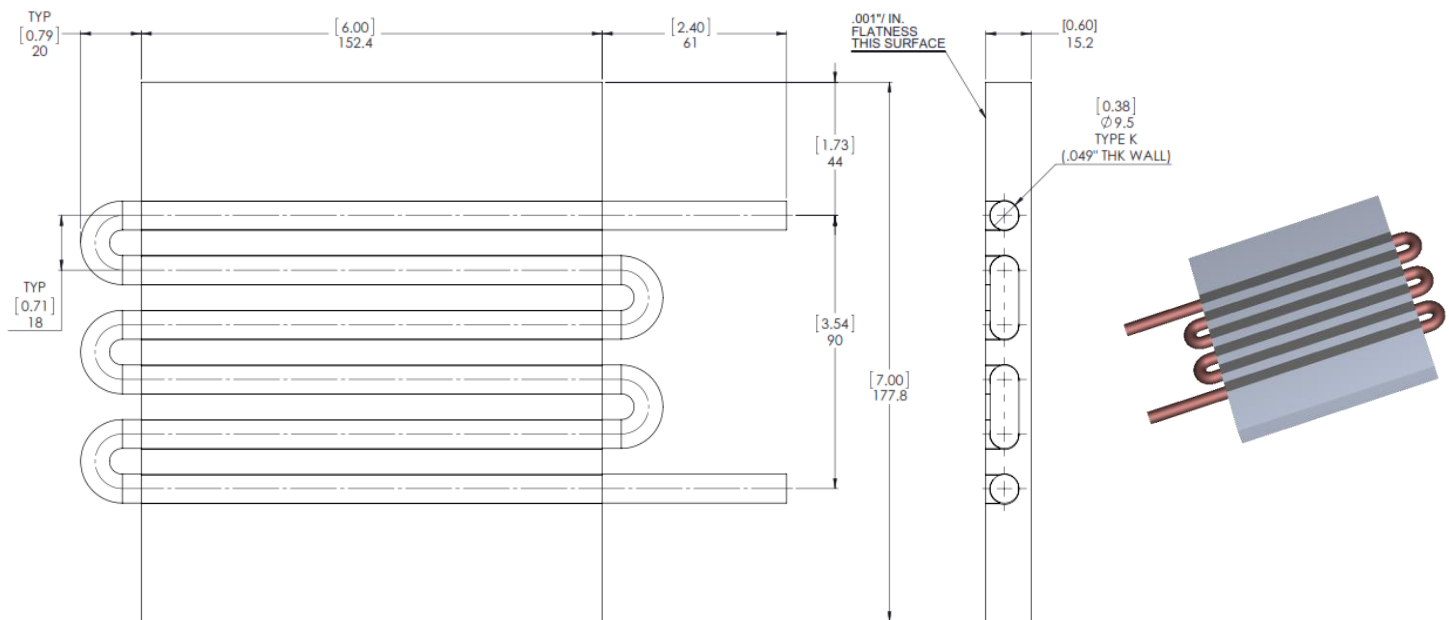


Figure #4

- #120963

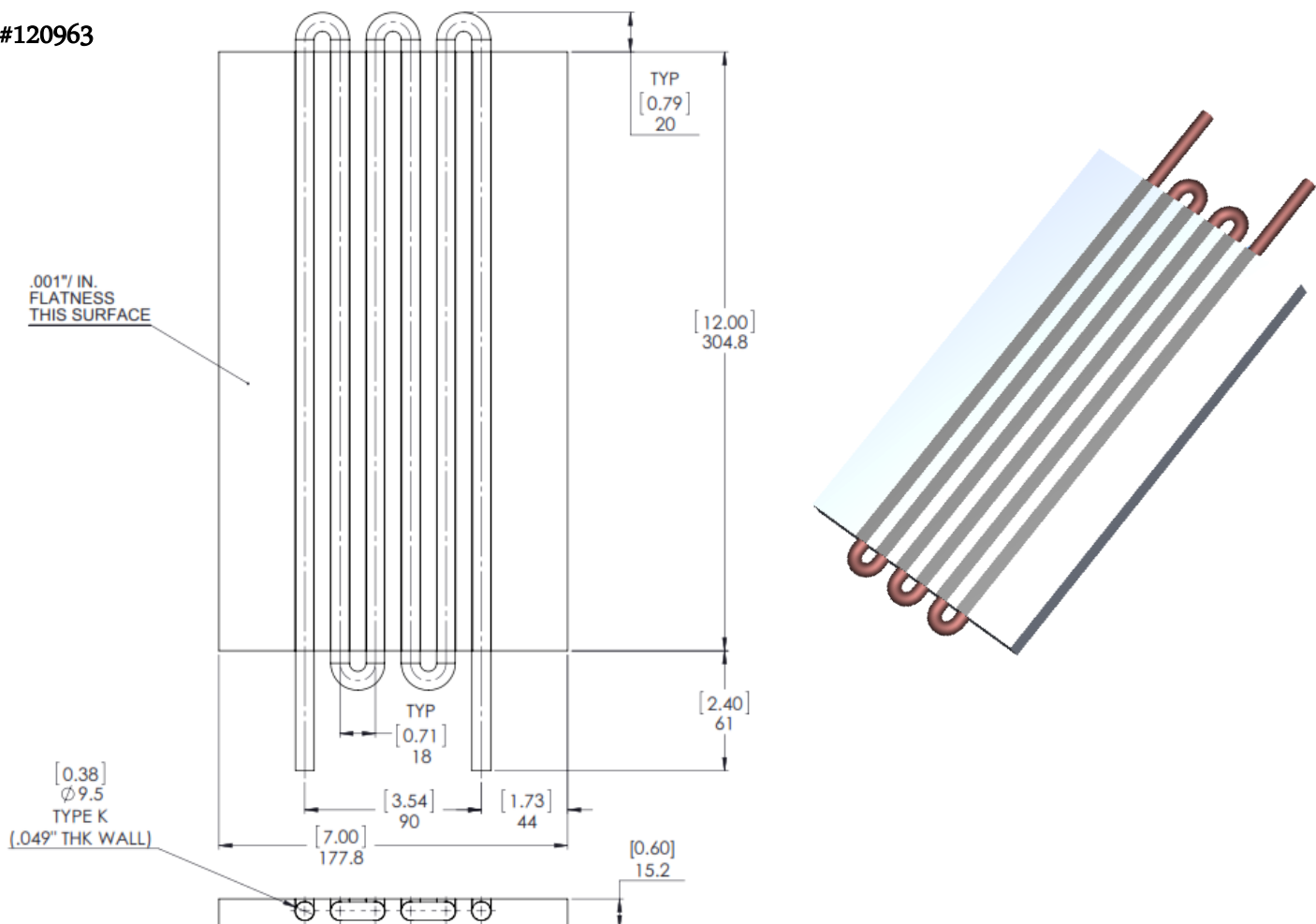
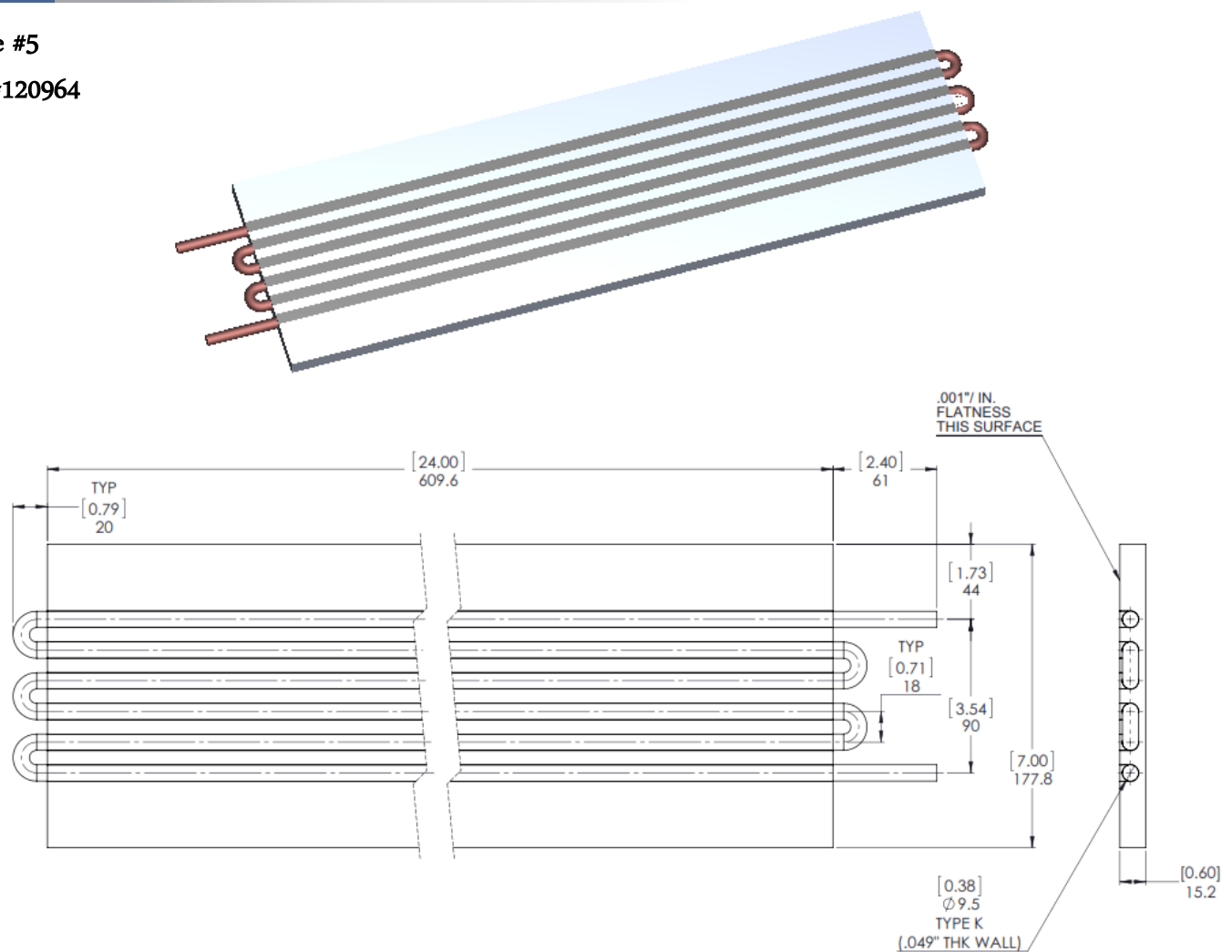


Figure #5

- #120964



Custom Full Buried Tube Liquid Cold Plates Available

Contact our Engineers:

Wakefield-Vette

603-635-2800

Communications@wakefield-vette.com

www.wakefield-vette.com

Mouser Electronics

Authorized Distributor

Click to View Pricing, Inventory, Delivery & Lifecycle Information:

[Wakefield-Vette:](#)

[120961](#) [120964](#) [120962](#) [120963](#) [120959](#) [120960](#)