

PLEASE CHECK WWW.MOLEX.COM FOR LATEST PART INFORMATION

Part Number: [0955016669](#)
Status: **Active**
Description: Modular Jacks, Low Profile, SMT Jack, 6 Positions, 6 loaded

Documents:

[3D Model](#) [Product Specification PS-95501 \(PDF\)](#)
[Drawing \(PDF\)](#) [RoHS Certificate of Compliance \(PDF\)](#)
[Application Specification \(PDF\)](#)

Agency Certification

UL E107635

General

Product Family Modular Jacks/Plugs
Series [95501](#)
Component Type PCB Jack
Magnetic No
Performance Category 3
Power over Ethernet (PoE) N/A
Product Name RJ12

Physical

Boot Color N/A
Color - Resin Black
Durability (mating cycles max) 500
Flammability 94V-0
Inverted / Top Latch No
Lightpipes/LEDs None
Material - Metal Phosphor Bronze
Material - Plating Mating Gold
Material - Plating Termination Tin
Material - Resin High Temperature Thermoplastic
Orientation Right Angle (Side Entry)
PCB Locator Yes
PCB Retention Yes
PCB Thickness Recommended (in) 0.063 In
PCB Thickness Recommended (mm) 1.60 mm
Packaging Type Tube
Pitch - Mating Interface (in) 0.040 In
Pitch - Mating Interface (mm) 1.02 mm
Pitch - Term. Interface (in) 0.050 In
Pitch - Term. Interface (mm) 1.27 mm
Plating min: Mating (µin) 50.8
Plating min: Mating (µm) 1.27
Plating min: Termination (µin) 76
Plating min: Termination (µm) 1.9
Ports 1
Positions / Loaded Contacts 6/6
Surface Mount Compatible (SMC) Yes
Temperature Range - Operating -40°C to +80°C
Termination Interface: Style Surface Mount
Waterproof / Dustproof No
Wire/Cable Type N/A

Electrical

Current - Maximum per Contact 1.5A

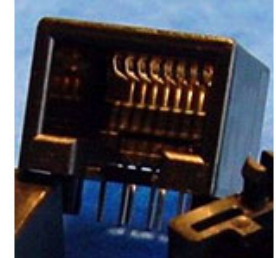


image - Reference only

Series

EU RoHS

**ELV and RoHS
Compliant**

REACH SVHC

Contains SVHC: No

Halogen-Free

Status

Halogen-Free

**Need more information on product
environmental compliance?**

Email productcompliance@molex.com
For a multiple part number RoHS Certificate of
Compliance, [click here](#)

Please visit the [Contact Us](#) section for any
non-product compliance questions.

China RoHS



Search Parts in this Series

[95501Series](#)

Mates With

FCC 68 Plugs

Use With

90075

Shielded	No
Voltage - Maximum	125V DC

Solder Process Data

Duration at Max. Process Temperature (seconds)	45
Lead-free Process Capability	Reflow Capable (SMT only)
Max. Cycles at Max. Process Temperature	3
Process Temperature max. C	260

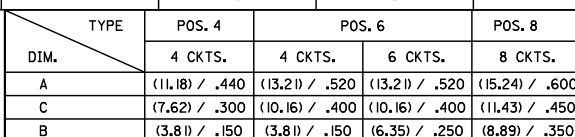
Material Info

Reference - Drawing Numbers

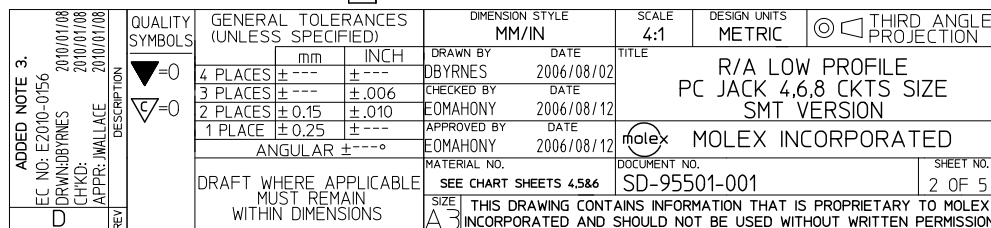
Packaging Specification	PK-95001
Product Specification	PS-95501
Sales Drawing	SD-95501-001

This document was generated on 06/07/2010

PLEASE CHECK WWW.MOLEX.COM FOR LATEST PART INFORMATION



1- MATERIAL:
-HOUSING: LCP GLASS FILLED UL 94V-0,
COLOUR BLACK.
2- SEE OTHER NOTES SHEET 1
3- COPLANARITY OF SIGNAL TAILS 0.10MM

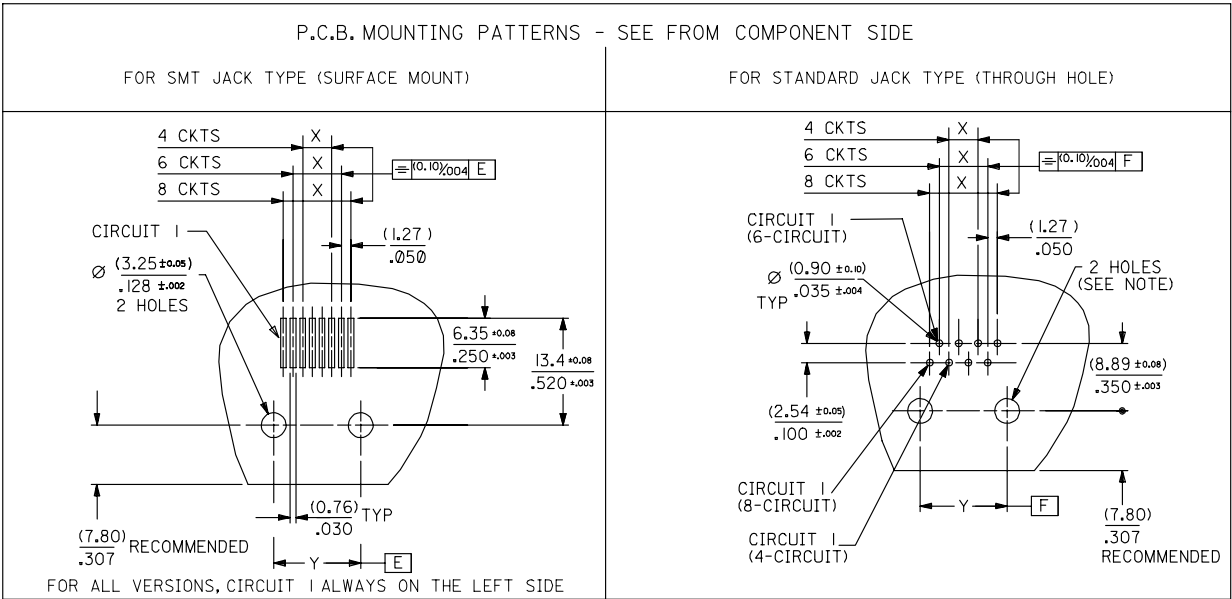


10 9 8 7 6 5 4 3 2 1

F

TYPE DIM.	POS. 4	POS. 6		POS. 8
	4 CKTS.	4 CKTS.	6 CKTS.	8 CKTS.
Y $\pm 0.05 / \pm .002$	(7.62) / .300	(10.16) / .400	(10.16) / .400	(11.43) / .450
X $\pm 0.05 / \pm .002$	(3.81) / .150	(3.81) / .150	(6.35) / .250	(8.89) / .350

E



B

NOTE:
FOR CONVECTION SOLDERING: DIA 3.25±0.05 / .128±.002
FOR WAVE SOLDERING: DIA 3.20±0.10 / .126±.004

MODIFIED TABLE EC NO: E2008-0176 DRAWN BY: DBYRNES CHKD: CHIKO APPR: EOMAHONY REV	QUALITY SYMBOLS ▽=0 ▽=0	GENERAL TOLERANCES (UNLESS SPECIFIED) <table><tr><td></td><td>mm</td><td>INCH</td></tr><tr><td>4 PLACES</td><td>±---</td><td>±---</td></tr><tr><td>3 PLACES</td><td>±---</td><td>±.006</td></tr><tr><td>2 PLACES</td><td>±0.15</td><td>±.010</td></tr><tr><td>1 PLACE</td><td>±0.25</td><td>±---</td></tr><tr><td colspan="3">ANGULAR ±---°</td></tr></table>		mm	INCH	4 PLACES	±---	±---	3 PLACES	±---	±.006	2 PLACES	±0.15	±.010	1 PLACE	±0.25	±---	ANGULAR ±---°			DIMENSION STYLE MM/IN		SCALE 2:1	DESIGN UNITS METRIC	THIRD ANGLE PROJECTION
				mm	INCH																				
			4 PLACES	±---	±---																				
			3 PLACES	±---	±.006																				
			2 PLACES	±0.15	±.010																				
			1 PLACE	±0.25	±---																				
			ANGULAR ±---°																						
			DRAWN BY DBYRNES	DATE 2006/08/02	TITLE R/A LOW PROFILE JACK PC JACK 4.6.8 CKT SIZE SMT AND STANDARD VERSION MOLEX MOLEX INCORPORATED																				
			CHECKED BY EOMAHONY	DATE 2006/08/12																					
			APPROVED BY EOMAHONY	DATE 2006/08/12																					
MATERIAL NO. SEE CHART SHEETS 4,5&6																									
DOCUMENT NO. SD-95501-001		SHEET NO. 3 OF 5																							
SIZE A3 THIS DRAWING CONTAINS INFORMATION THAT IS PROPRIETARY TO MOLEX INCORPORATED AND SHOULD NOT BE USED WITHOUT WRITTEN PERMISSION																									
DRAFT WHERE APPLICABLE MUST REMAIN WITHIN DIMENSIONS																									

A

10 9 8 7 6 5 4 3 2 1

SPECIAL PACKAGING TUBE,SEE PACKAGING SPEC PK95001 SHEET 3

PART NO FOR JACK ASSEMBLY
THROUGH HOLE VERSION

PART NO FOR JACK ASSEMBLY
SMT VERSION

HOUSING SIZE	LOADED CONTACTS	PLATING	LCP GLASS FILED 94V0,COLOR BLACK.					
			NO KEY		KEY			
			NOT RIBBED	TOOLED	NOT RIBBED	TOOLED	TOOLED	TOOLED
4	4	2	95501-2401	X				
6	4	2	95501-2601	X				
6	6	2	95501-2611	X				
8	8	2	95501-2821	X				

PLATING	LCP GLASS FILLED 94V0 COLOUR BLACK					
	NO KEY		KEY		NO KEY	
	NOT RIBBED	TOOLED	NOT RIBBED	TOOLED	NOT RIBBED	TOOLED
2	95501-6449	X				
2	95501-6649	X				
2	95501-6669	X				
2	95501-6889	X	95501-6890	X		

REMOVED GREY OPTIONS EC NO: E2007-0513 DRAWN BY DBYRNES 2007/01/08 CHKD: CHIKO 2007/01/08 APPR: EOMAHONY 2007/01/09	DESCRIPTION	QUALITY SYMBOLS ▽=0 ▽=0	GENERAL TOLERANCES (UNLESS SPECIFIED)		DIMENSION STYLE MM ONLY		SCALE ---	DESIGN UNITS METRIC	THIRD ANGLE PROJECTION			
			mm	INCH	DRAWN BY DBYRNES	DATE 2006/08/02	TITLE LOW PROFILE R/A JACK STANDARD AND SMT VERSION TUBE PACKAGING					
			4 PLACES	± ---	± ---	CHECKED BY EOMAHONY	DATE 2006/08/12	APPROVED BY EOMAHONY				
			3 PLACES	± ---	± ---	DATE 2006/08/12						
			2 PLACES	± ---	± ---	MATERIAL NO. SD-95501-001						
B	REV		ANGULAR ± ---°		SEE CHART		DOCUMENT NO. SD-95501-001		SHEET NO. 5 OF 5			
			DRAFT WHERE APPLICABLE MUST REMAIN WITHIN DIMENSIONS		THIS DRAWING CONTAINS INFORMATION THAT IS PROPRIETARY TO MOLEX INCORPORATED AND SHOULD NOT BE USED WITHOUT WRITTEN PERMISSION							