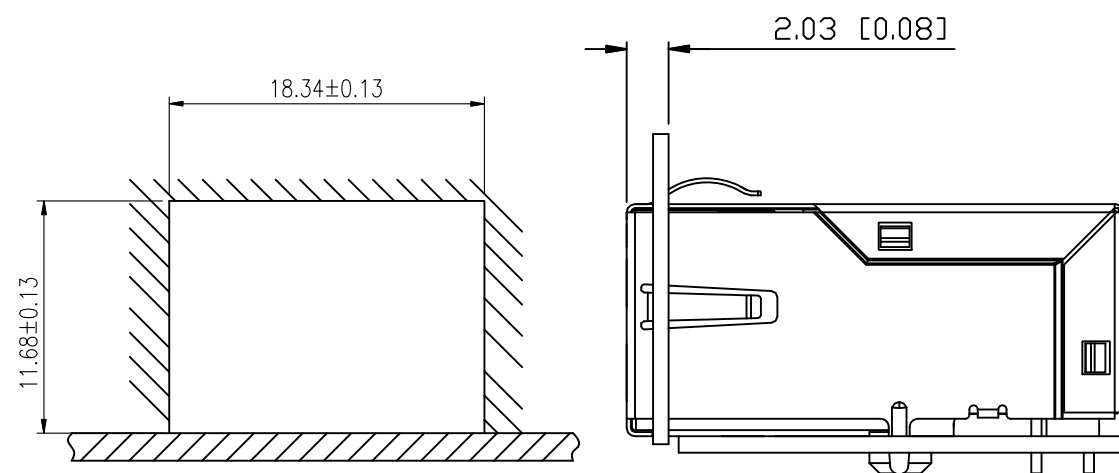
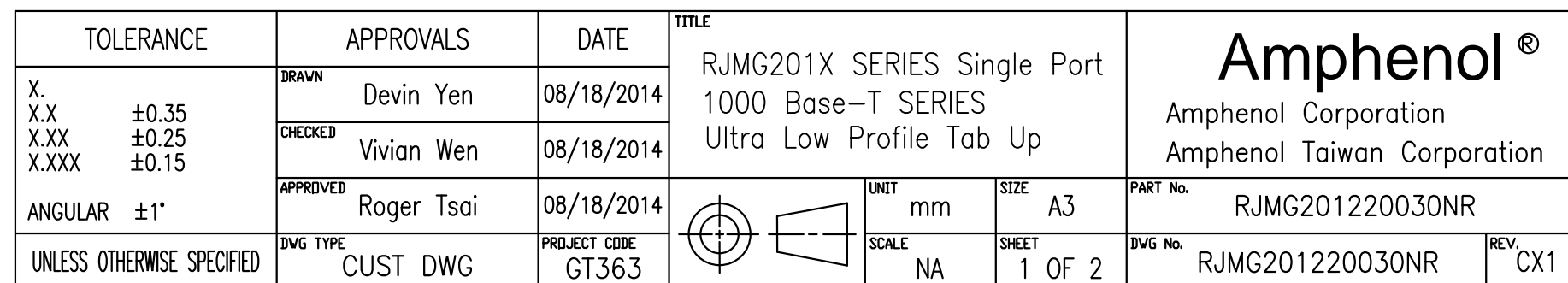
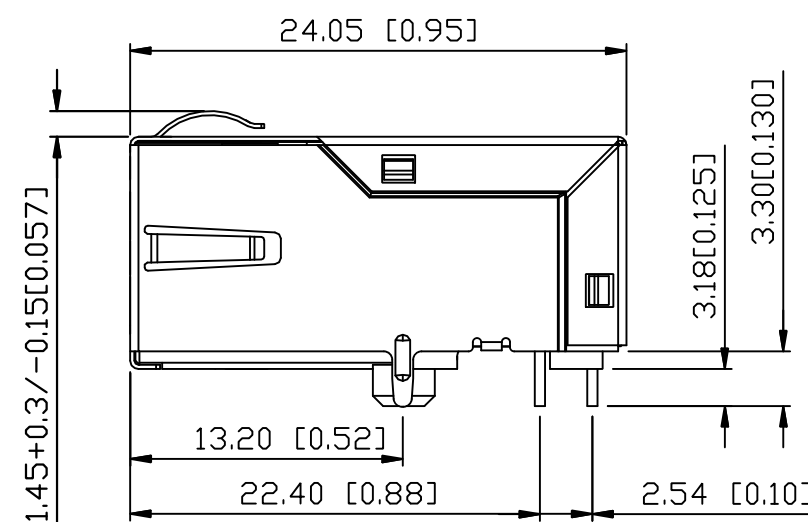


The marking on this product doesn't contain environmental hazardous materials per Material Specification SS-00259 for Sony GP compliant or per directive 2011/65/EU for RoHS compliant.

| REVISIONS | | | | |
|-----------|---------|---------------------------|------------|------------|
| SYM | ECN No. | DESCRIPTION | DATE | APPROVED |
| B | _____ | RELEASE THE NEW STRUCTURE | 01/08/2010 | Greg L |
| CX1 | _____ | UPDATE SIZE | 11/21/2014 | Roger Tsai |



Mechanical Shock: per MIL-STD-1344A,method 2004.1, test condition C

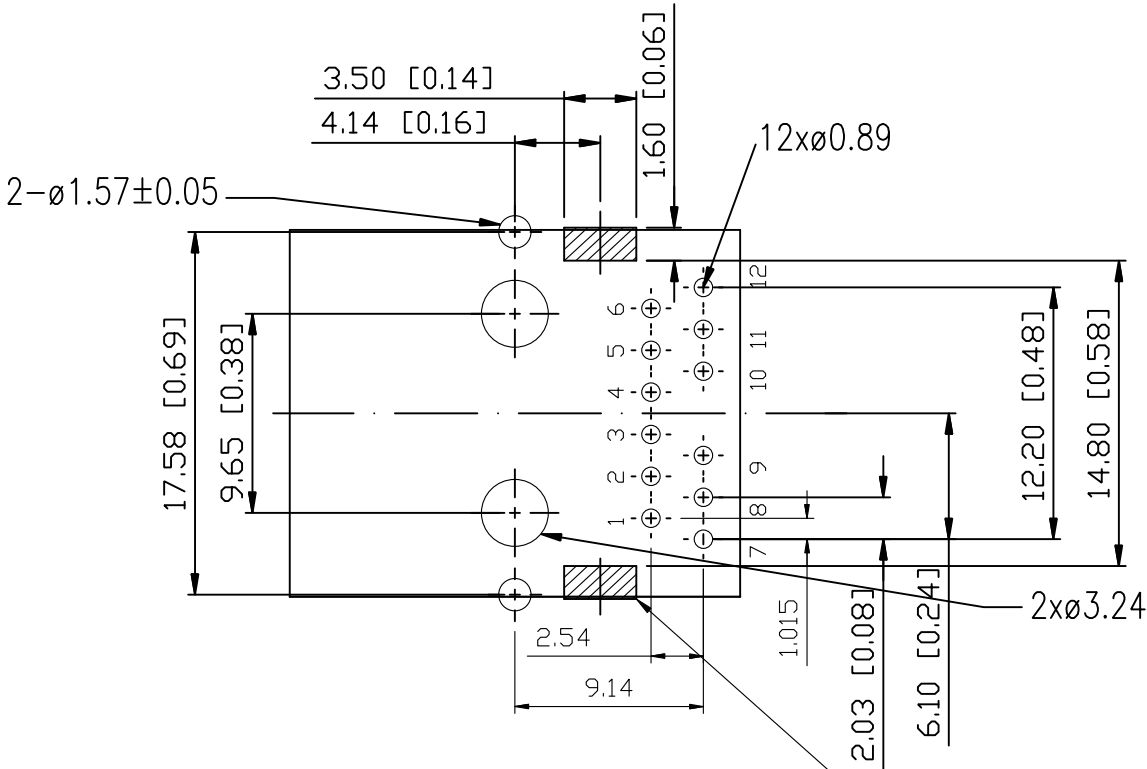


This document is the property of Amphenol Corporation and is delivered on the express condition that is not to be disclosed, reproduced or used, in whole or in part, for manufacture or sale by anyone other than Amphenol Corporation without its prior consent, and that no right is granted to disclose or to use any information in this document.

The marking on this product doesn't contain environmental hazardous materials per Material Specification SS-00259 for Sony GP compliant or per directive 2011/65/EU for RoHS compliant.

CUSTOMER DRAWING

| REVISIONS | | | | |
|-----------|---------|---------------------------|------------|------------|
| SYM | ECN No. | DESCRIPTION | DATE | APPROVED |
| B | | RELEASE THE NEW STRUCTURE | 01/08/2010 | Greg L |
| CX1 | | UPDATE SIZE | 11/21/2014 | Roger Tsai |



RECOMMENDED PCB LAYOUT
SEE FROM COMPONENT SIDE

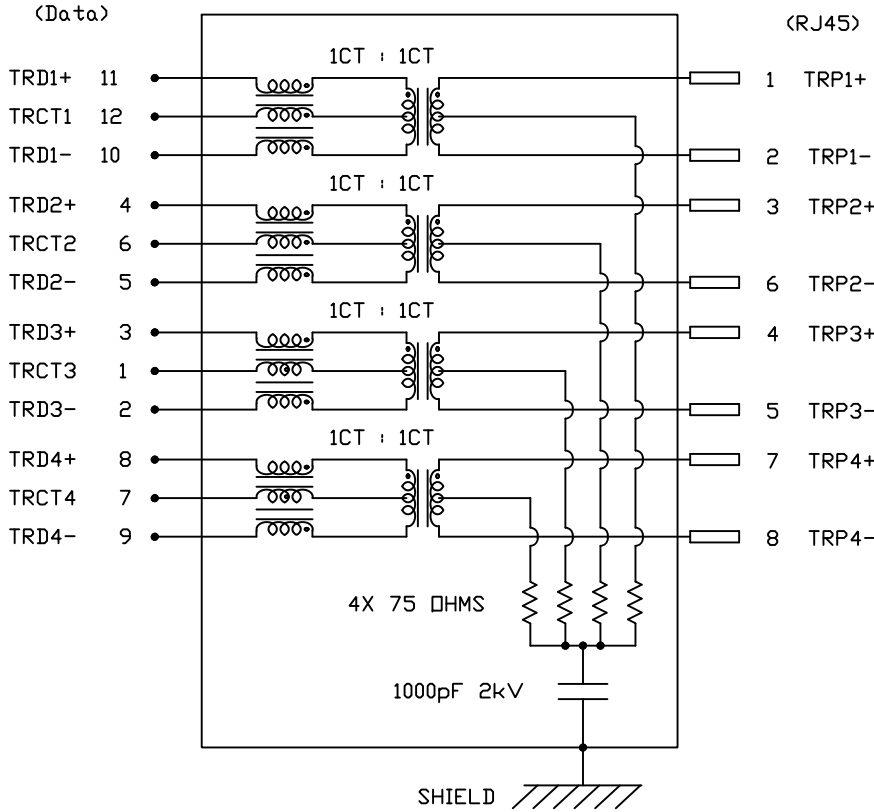
IT IS RECOMMENDED THAT SHADED
AREA OF CUSTOMER PC BOARD BE
CLEAR OF ANY VIA HOLE
COMPONENT AND CIRCUIT TRANCE

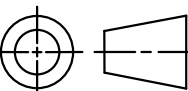
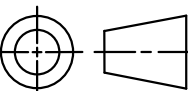
CONNECTOR PERFORMANCE
ELECTRICAL SPECIFICATION(@25° C)

| PARAMETER | LIMITS (MAX. OR MIN.) | FREQUENCY RANGE/ TEST CONDITIONS |
|---------------------|--|-------------------------------------|
| INSERTION LOSS | -0.8dB MAX. -1.2dB MAX. | 0.1-100 MHz 100-125 MHz |
| RETURN LOSS | -18dB MIN. -12+20 log(f/80MHz)dB MIN. | 0.5-40 MHz 40-100 MHz |
| CM-CM REJECTION | -30dB MIN. | 100 KHz-100 MHz |
| CM-DM REJECTION | -35dB MIN. | 100 KHz-100 MHz |
| CROSSTALK ISOLATION | -30+20 log(f/100MHz)dB MIN. | 100 KHz-100 MHz |
| HIPOT (ISOLATION) | 2250KVDC 1mA | 60S |
| OCL | 350uH MIN. | 100KHz 100mV 8mA |
| TURN RATIO | 1:1±2% | |



SCHEMATIC DRAWING



| TOLERANCE | | APPROVALS | | DATE | | TITLE | | | Amphenol® Amphenol Corporation Amphenol Taiwan Corporation | | | | |
|--|--|------------------------|--|-----------------------|--|---|--|--|--|-----------------|-----------------------------|---|-------------|
| X. X.X ±0.35 X.XX ±0.25 X.XXX ±0.15 ANGULAR ±1° UNLESS OTHERWISE SPECIFIED | | DRAWN Devin Yen | | 08/18/2014 | | | | | | | | RJMG201X SERIES Single Port 1000 Base-T SERIES Ultra Low Profile Tab Up | |
| | | CHECKED Vivian Wen | | 08/18/2014 | | | | | | | | | |
| | | APPROVED Roger Tsai | | 08/18/2014 | |  | | | UNIT mm | SIZE A3 | PART No. RJMG201220030NR | | |
| | | DWG TYPE CUST DWG | | PROJECT CODE GT363 | |  | | | SCALE NA | SHEET 2 OF 2 | DWG No. RJMG201220030NR | | REV. CX1 |

Mouser Electronics

Authorized Distributor

Click to View Pricing, Inventory, Delivery & Lifecycle Information:

[Amphenol:](#)

[RJMG201220030NR](#)