

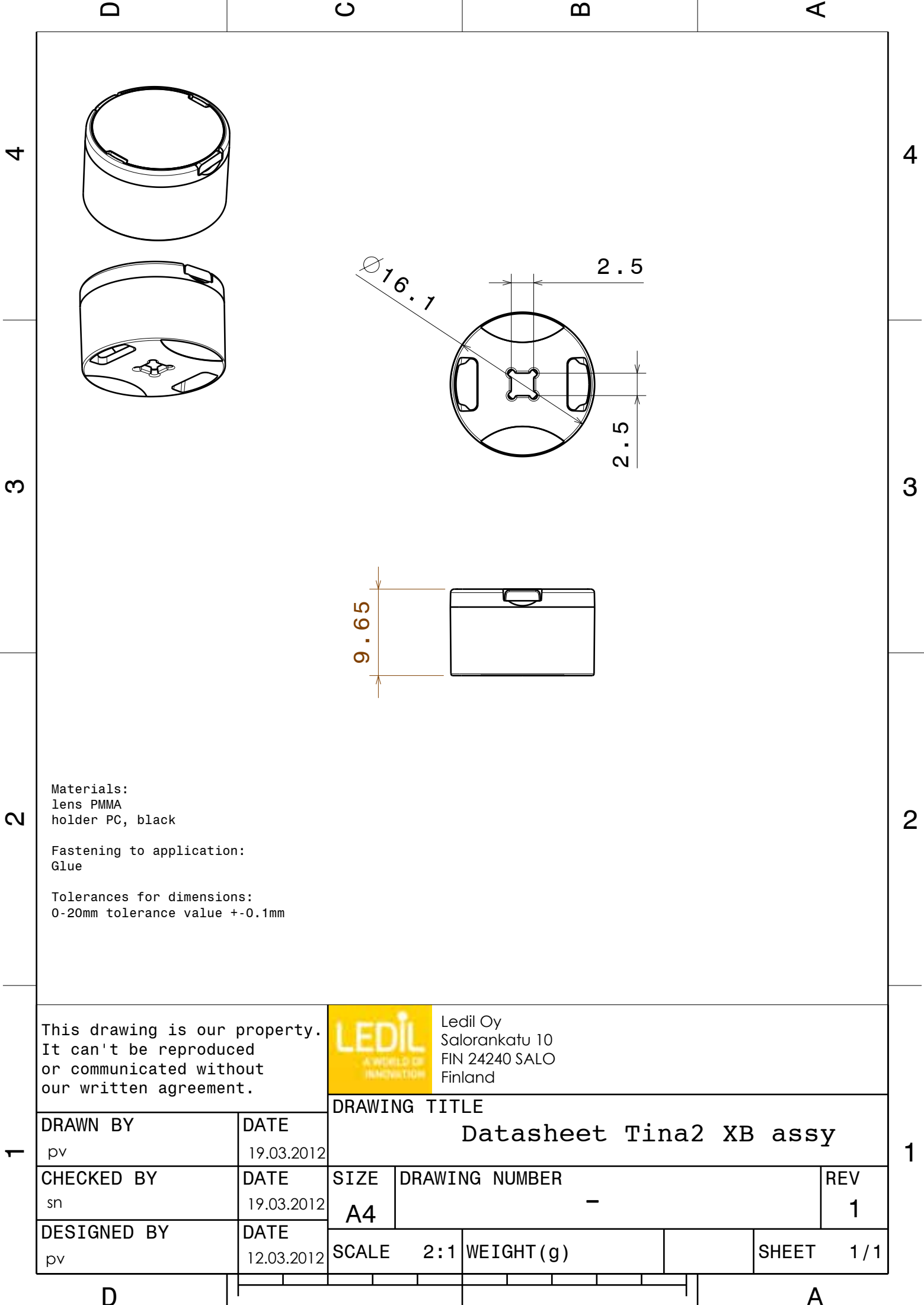
## DETAILS

Product Number	CP12672_TINA2-M
Family	Tina2
Type	Assembly
Color	black
Diameter	16,1 mm
Height	9,65 mm
Style	round
Optic Material	PMMA
Holder Material	
Fastening	glue
Status	production ready
ROHS Compliant	Yes
Date Updated	30/08/2012



## OPTICAL PROPERTIES

	Viewing	Light	Effi-		
LED	Angle	Beam	ciency	cd/lm	Connector
XB-D	29 deg	Medium	82 %	2.700	-



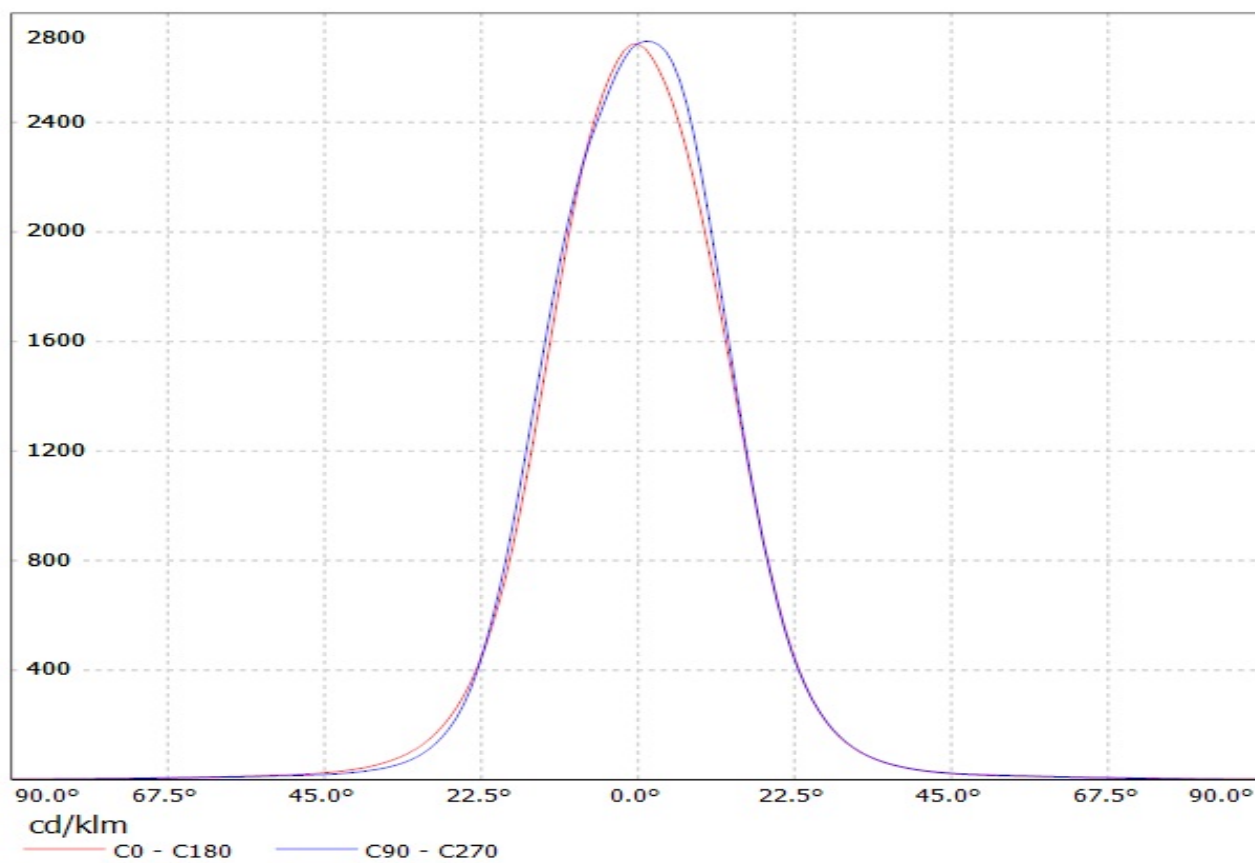
Materials:  
lens PMMA  
holder PC, black

Fastening to application:  
Glue

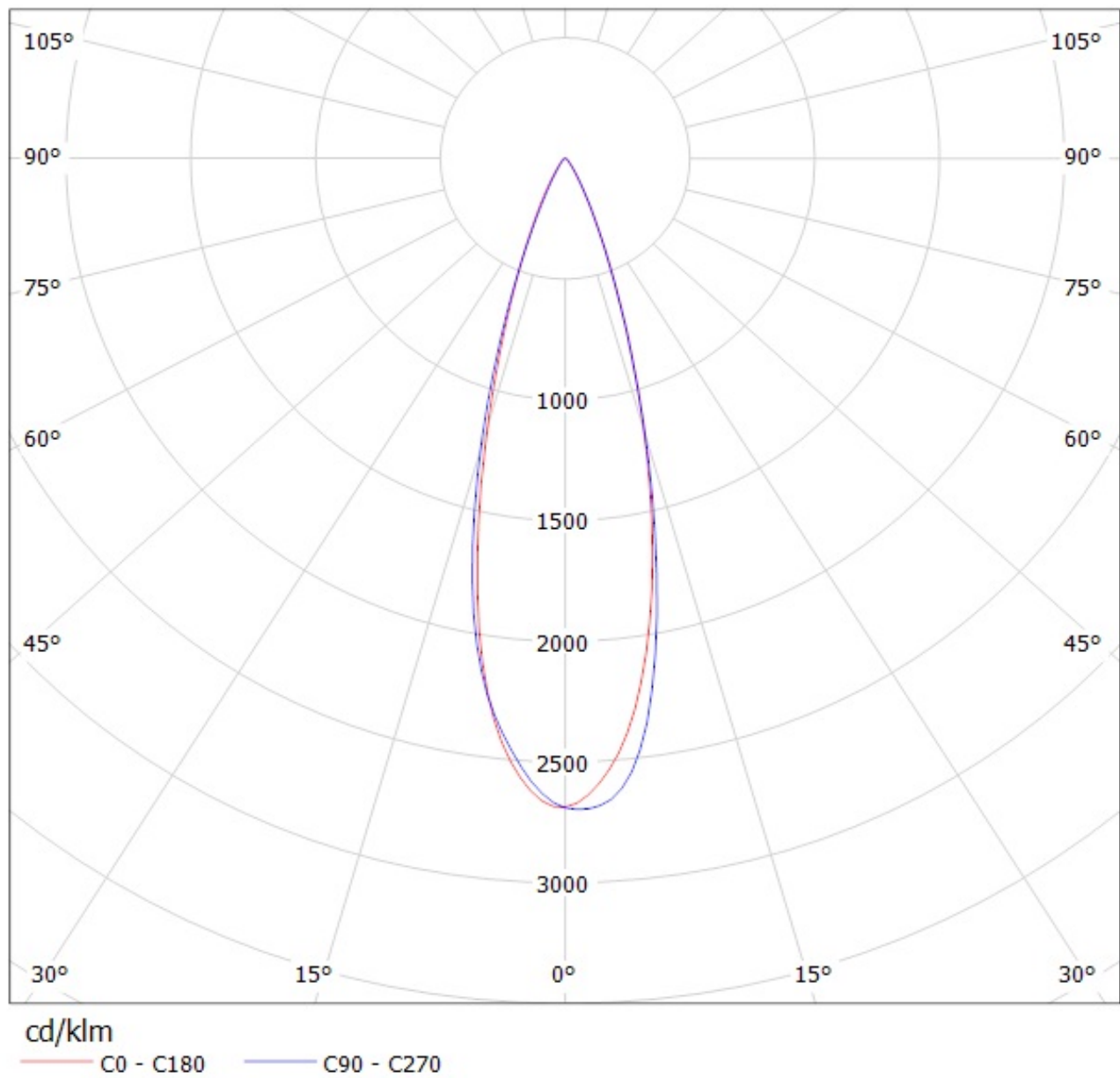
Tolerances for dimensions:  
0-20mm tolerance value  $\pm 0.1\text{mm}$

This drawing is our property. It can't be reproduced or communicated without our written agreement.		<div><div>LEDIL</div><div>A WORLD OF INNOVATION</div></div> <div>Ledil Oy Salorankatu 10 FIN 24240 SALO Finland</div>		DRAWING TITLE			
				Datasheet Tina2 XB assy			
DRAWN BY	DATE	SIZE	DRAWING NUMBER			REV	
pv	19.03.2012	A4	-			1	
CHECKED BY	DATE	SCALE		WEIGHT (g)		SHEET	
sn	19.03.2012	2 : 1				1 / 1	
DESIGNED BY	DATE						
pv	12.03.2012						

Luminaire: LEDIL OY CP12672\_TINA2-M (XB-D) Efficiency=82%  
Lamps: 1 x Cree XB-D white (97lm @ 250mA)



Luminaire: LEDIL OY CP12672\_TINA2-M (XB-D) Efficiency=82%  
Lamps: 1 x Cree XB-D white (97lm @ 250mA)



**NOTE: The typical divergence will be changed by different color, chip size and chip position tolerance. The typical total divergence is the full angle measured where the luminous intensity is half of the peak value.**