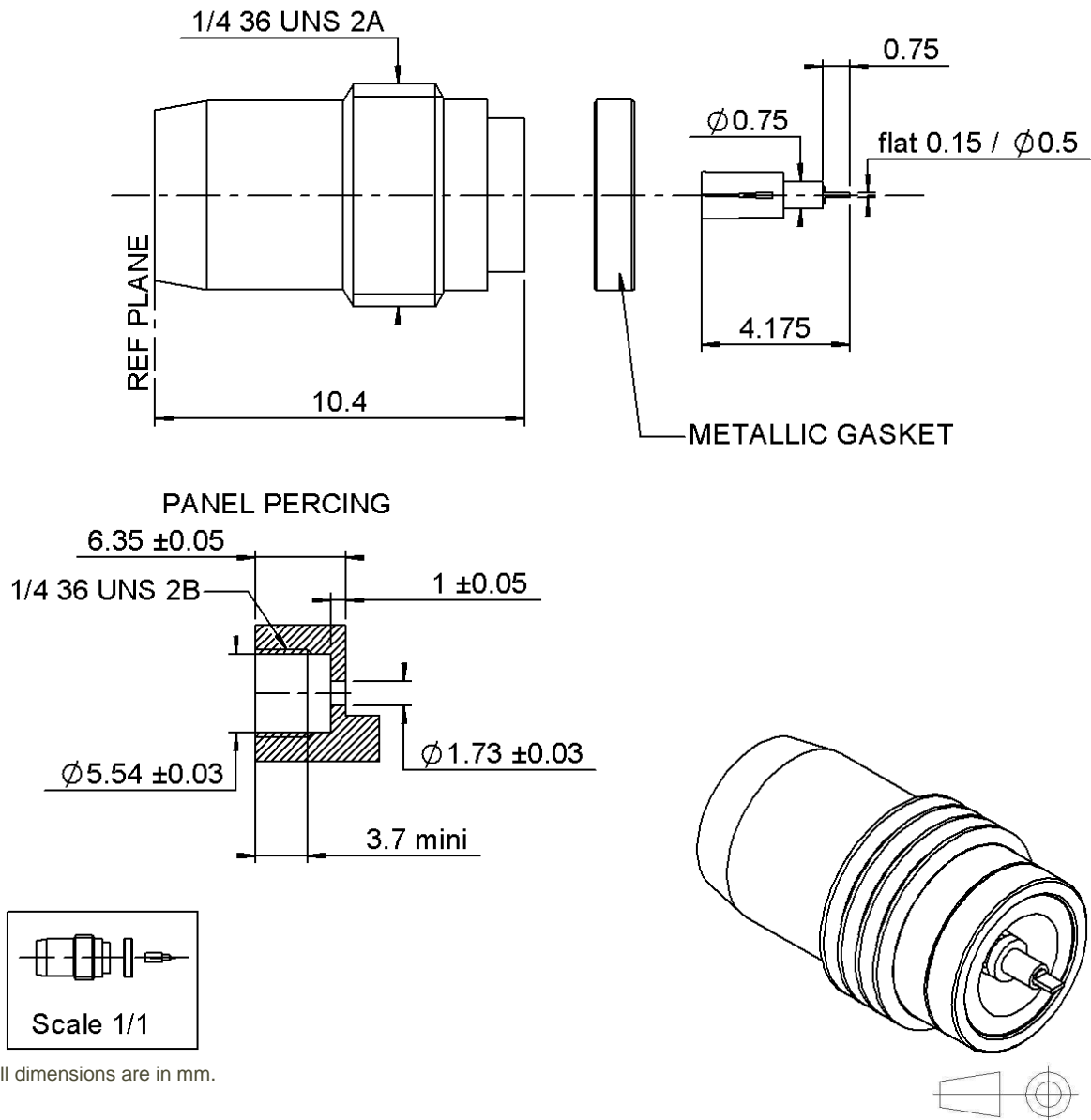


PAGE 1/3

ISSUE 1439A

SERIES BMA

PART NUMBER R128639071



COMPONENTS	MATERIALS	PLATING (µm)
Body	STAINLESS STEEL	PASSIVATED.
Center contact	BERYLLIUM COPPER	GOLD 1.3 OVER NICKEL2
Outer contact	-	-
Insulator	PTFE+GLASS BEAD	-
Gasket	ALUMINIUM ALLOY	GOLD 1.3 OVER NICKEL2
Others parts	DILVER P1	-
-	-	-
-	-	-

PAGE 2/3

ISSUE **1439A**

SERIES **BMA**

PART NUMBER **R128639071**

PACKAGING

Standard	Unit	Other
100	Contact us	Contact us

ELECTRICAL CHARACTERISTICS

Impedance		50	Ω
Frequency		0-22	GHz
VSWR	1.25	+	0,0000 x F(GHz) Maxi
Insertion loss		0.07	√F(GHz) dB Maxi
RF leakage	- (NA	- F(GHz) dB Maxi
Voltage rating		500	Veff Maxi
Dielectric withstanding voltage		1500	Veff mini
Insulation resistance		5000	MΩ mini

ENVIRONMENTAL

Operating temperature	-65/+125	°C
Hermetic seal	10-8	Atm.cm3/s
Panel leakage	NA	

MECHANICAL CHARACTERISTICS

Center contact retention			
Axial force – Mating End	27	N mini	
Axial force – Opposite end	27	N mini	
Torque	NA	N.cm mini	

SPECIFICATION

OTHER CHARACTERISTICS

Recommended torque			
Mating	NA	N.cm	
Panel nut	280	N.cm	
Mating life	1000	Cycles mini	
Weight	1,2020	g	

Assembly instruction:**NA**

Others:

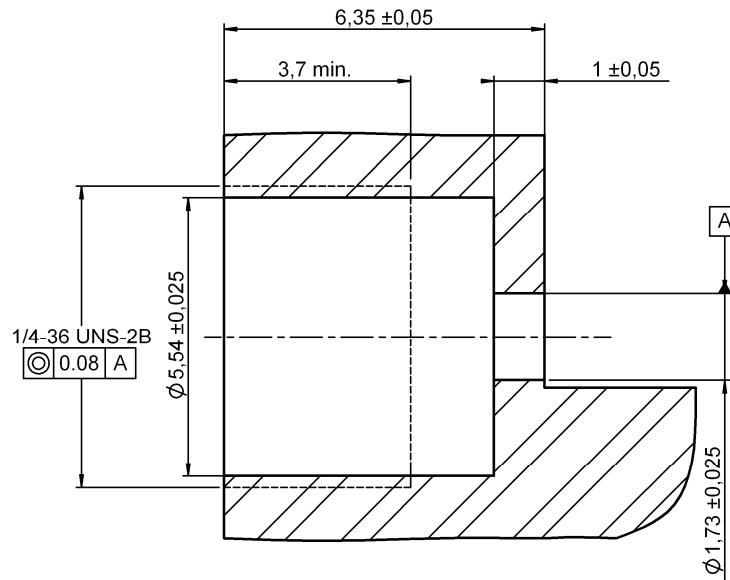
PAGE 3/3

ISSUE 1439A

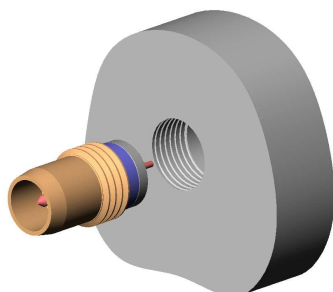
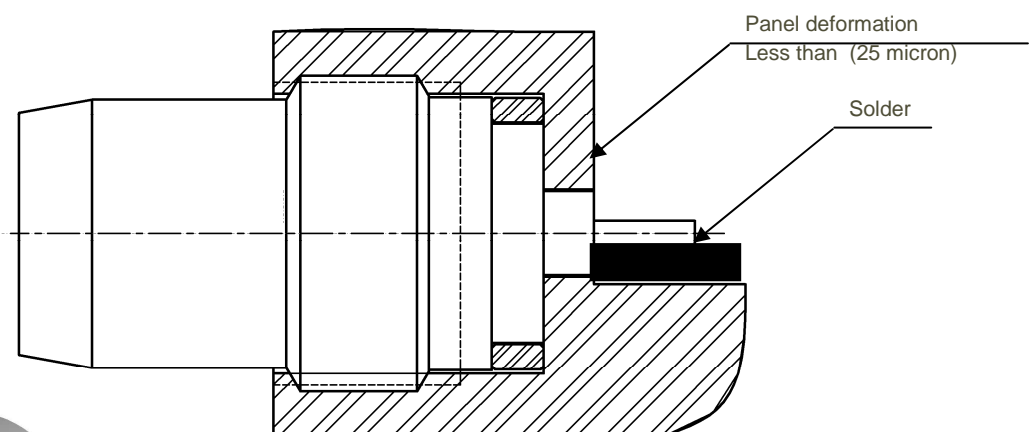
SERIES BMA

PART NUMBER R128639071

PANEL DRILLING



MOUNTING HOLE DETAIL



Assemble metal gasket onto connector. Screw both parts into the housing. Tighten the connector up to $280 \pm 10 \text{ Ncm}$ torque (use special tooling set RADIALL R282 340). Thus the connection hermeticity is guaranteed at $1 \cdot 10^{-8} \text{ atm.cm}^3/\text{sec}$. Then solder the pin. Be careful not put too much solder.

Mouser Electronics

Authorized Distributor

Click to View Pricing, Inventory, Delivery & Lifecycle Information:

Radial:

[R128639071](#) [R128639071W](#)