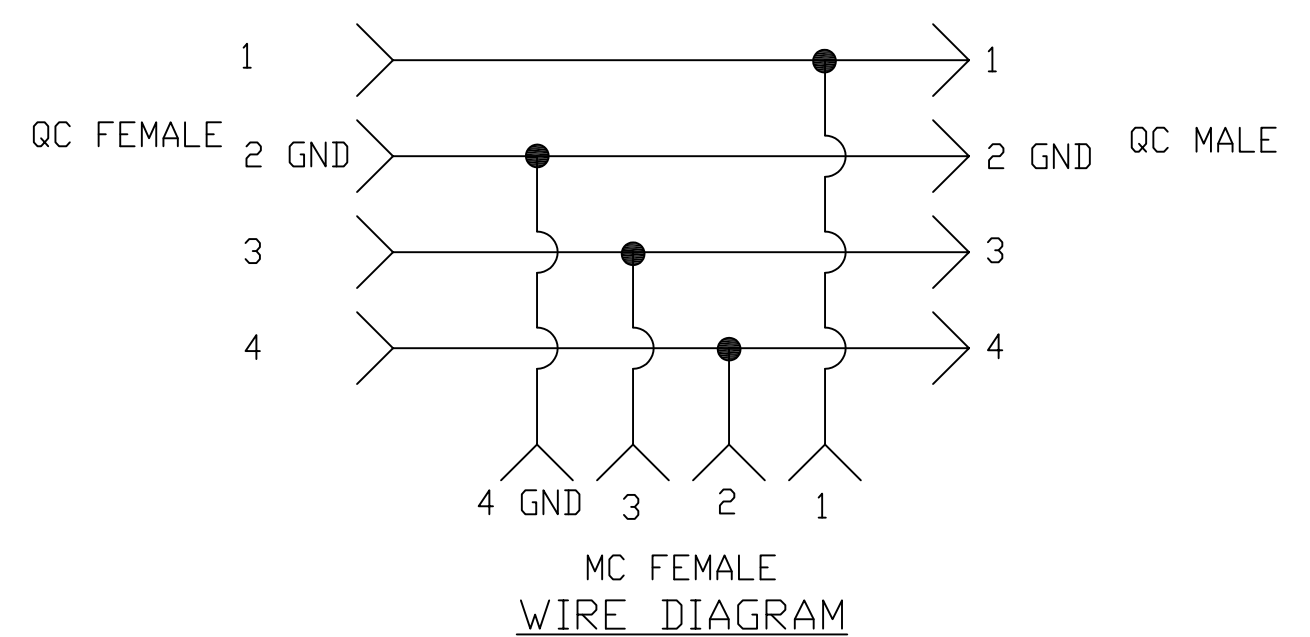
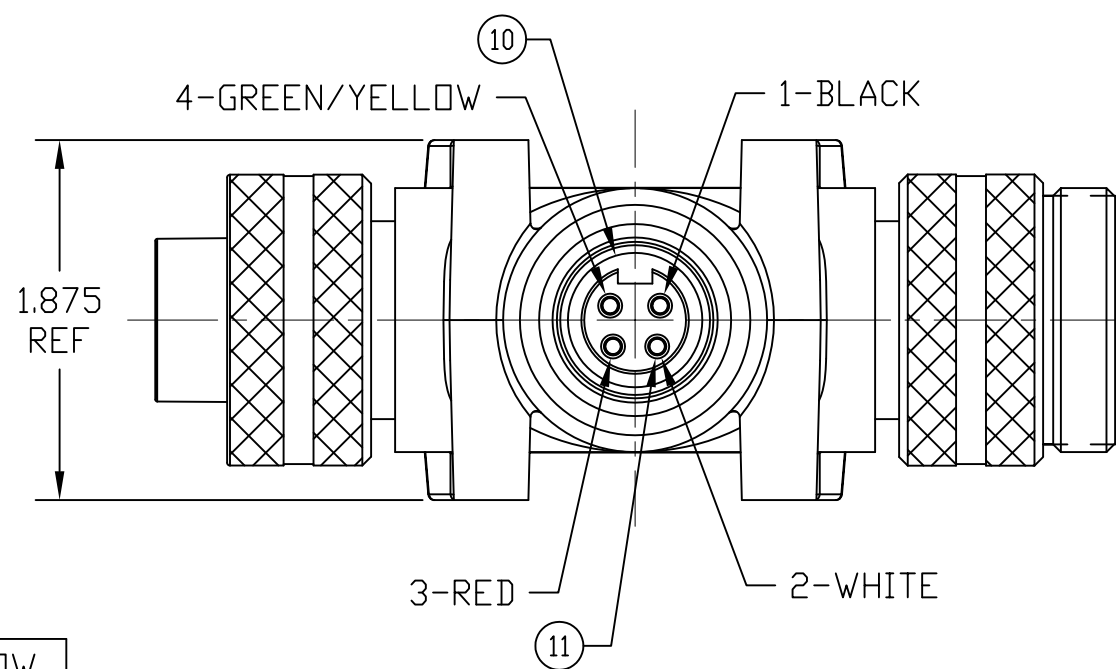
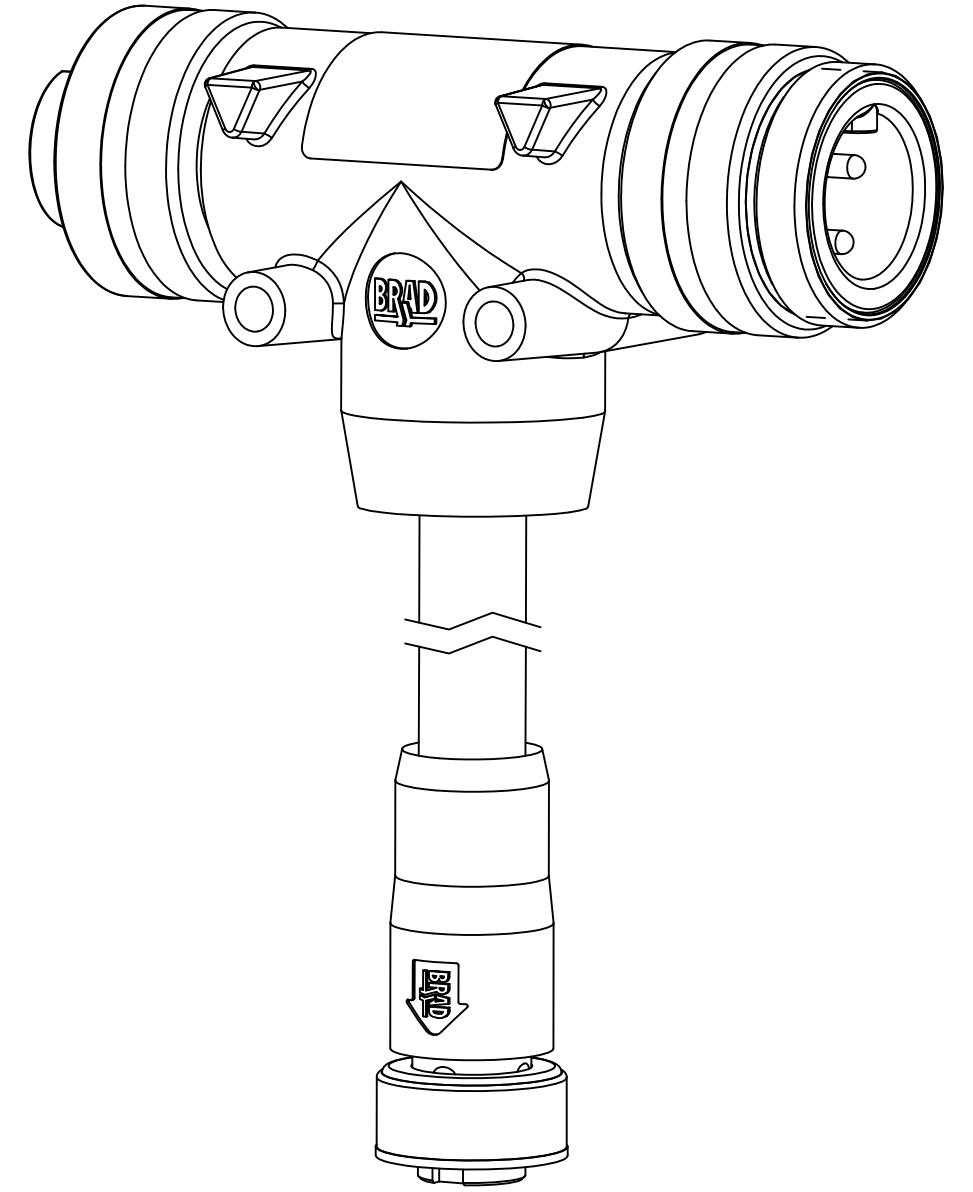
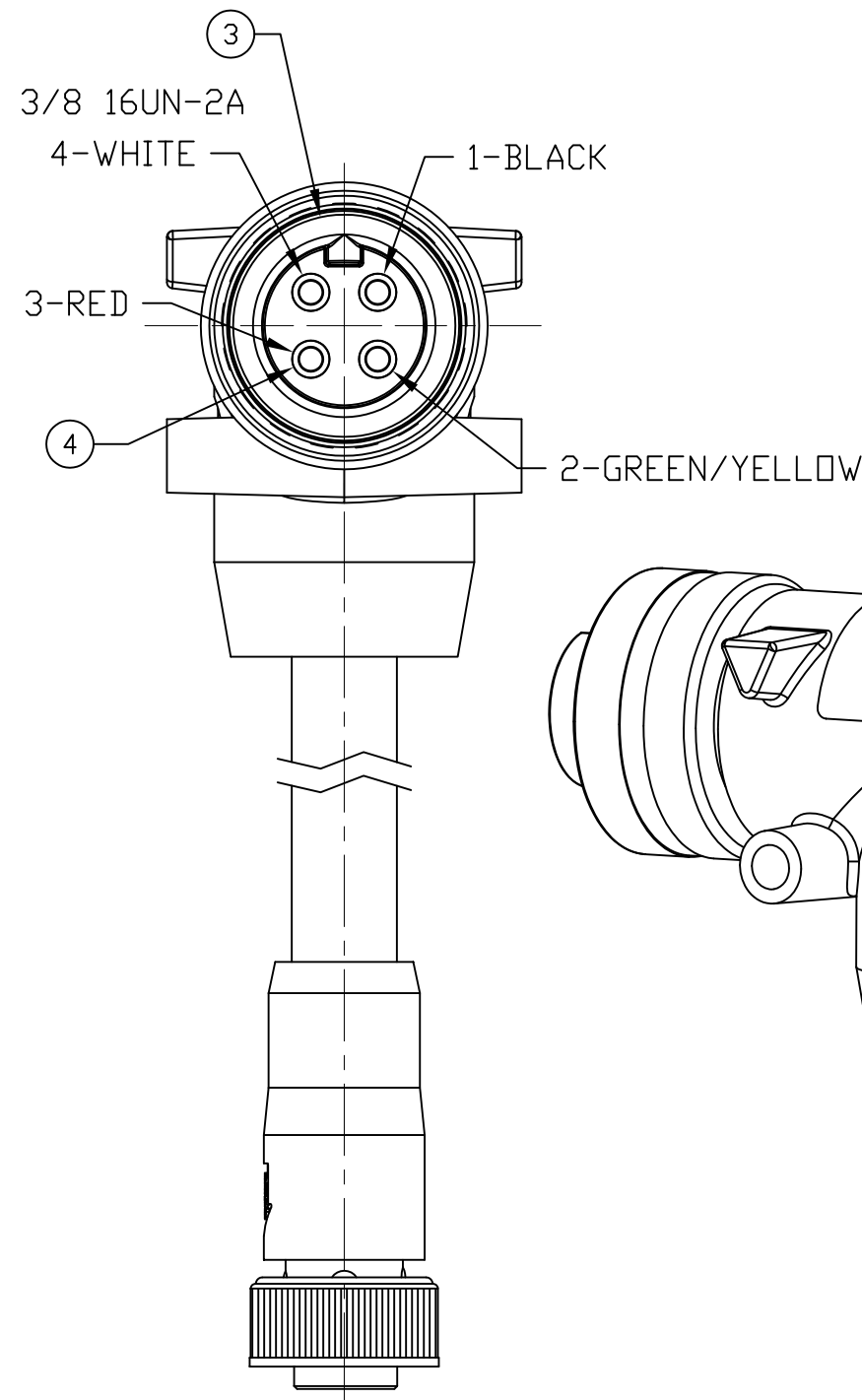
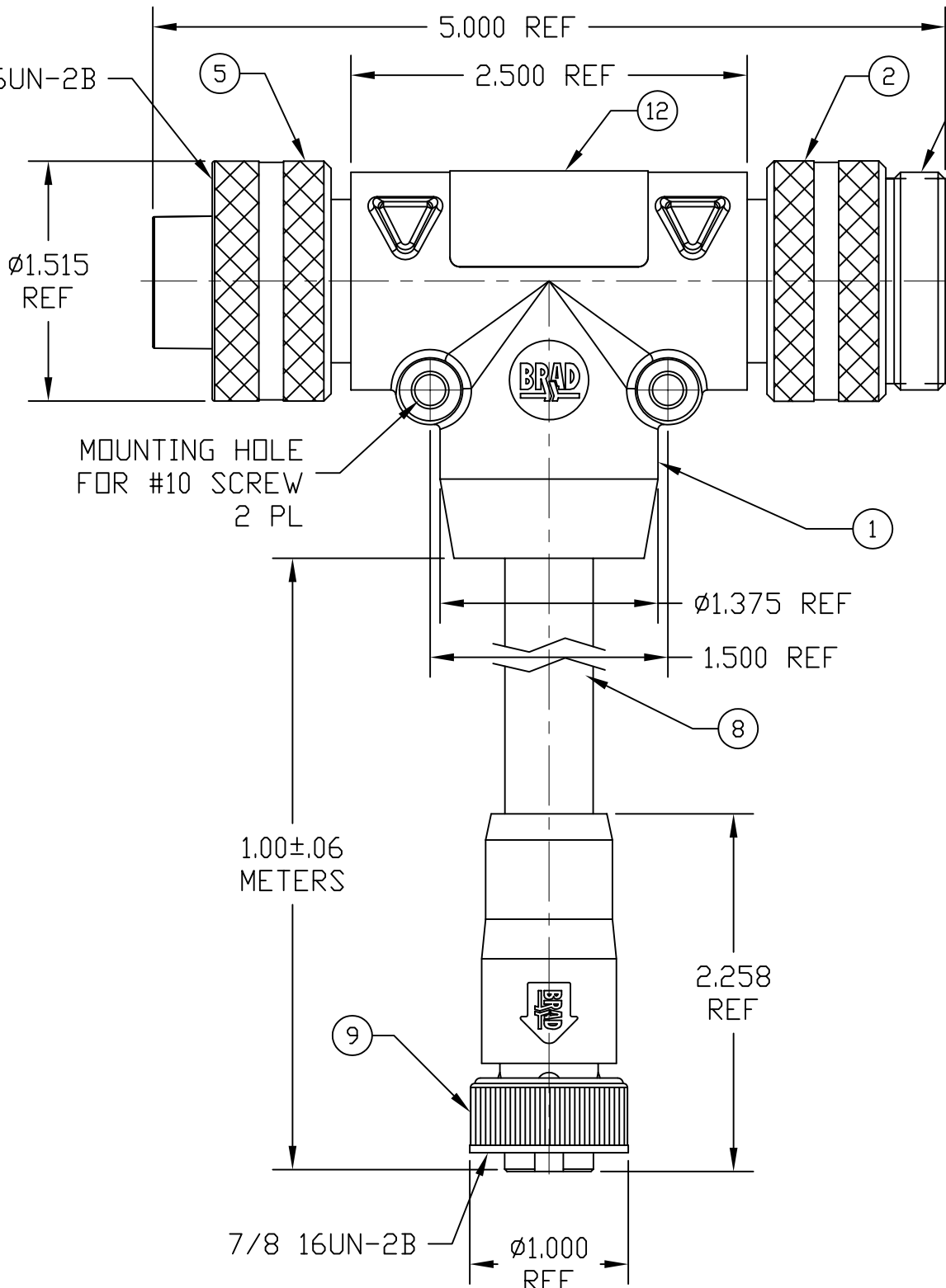
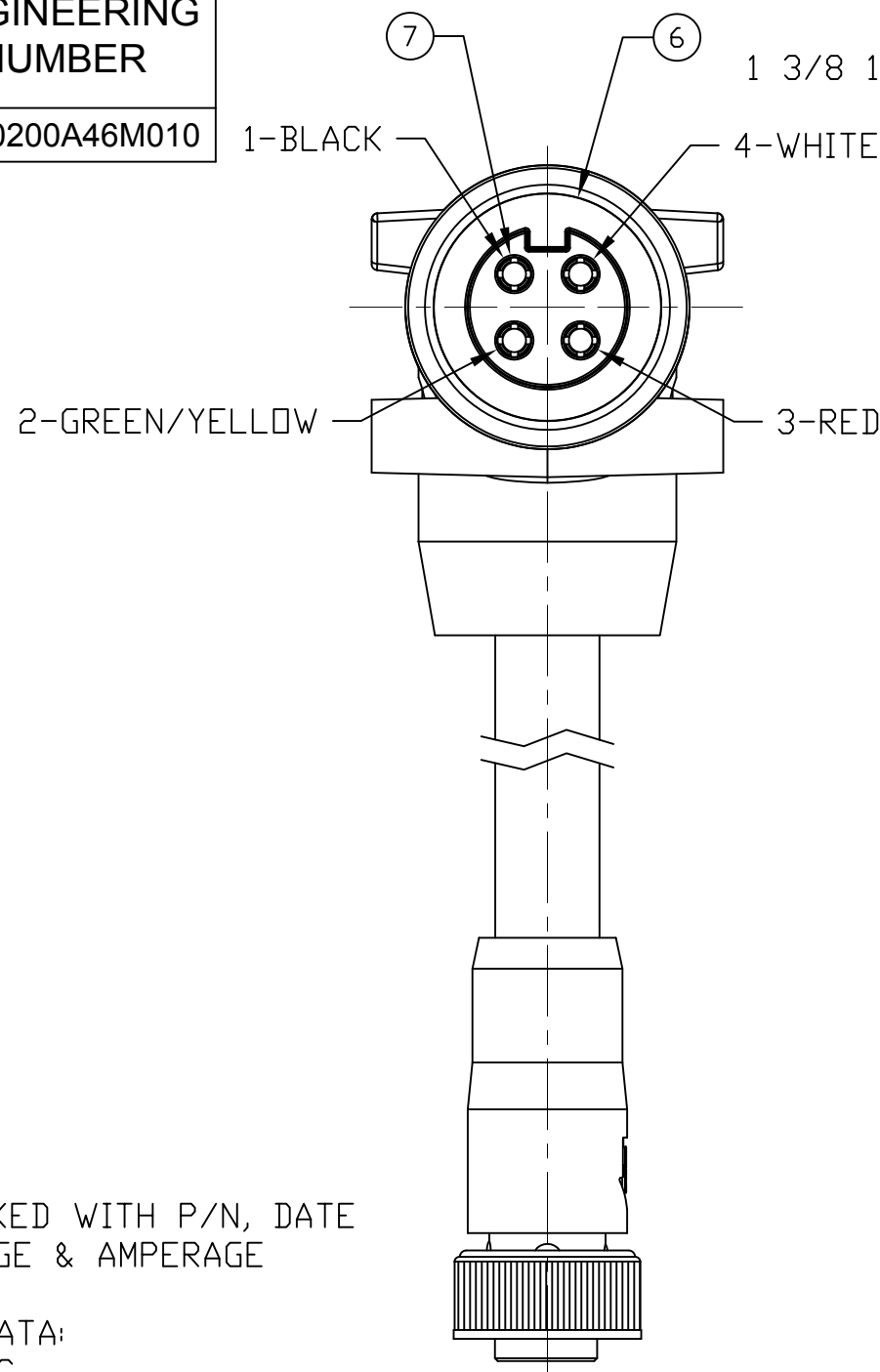


PART NUMBER	ENGINEERING NUMBER
1300680075	TC40200A46M010



- NOTE:
- 1) LABEL IS MARKED WITH P/N, DATE CODE, VOLTAGE & AMPERAGE
 - 2) ELECTRICAL DATA:
TEE QC TO MC
POLES: 4
MAX. VOLTAGE: 600V AC/DC
MAX. THRU CURRENT: 25A
MAX. DROP CURRENT: 15A
PROTECTION: IP67
TEMPERATURE RANGE: -20°C TO 90°C
 - 3) PACKAGING:
ASSEMBLIES ARE BAGGED SEPERATELY IN POLY BAGS WITH BAR CODE LABEL ATTACHED TO THE OUTSIDE OF THE BAG.
 - 4) ASSEMBLY IS RoHS COMPLIANT
 - 5) CERTIFICATION:
UL LISTED/CSA CERTIFIED , FILE E258922

12	1	LABEL	PLASTIC FILM	BLACK/YELLOW
11	4	MC SOCKET CONTACT	COPPER ALLOY	GOLD PLATED
10	1	MC FEMALE INSERT	PVC	BLACK
9	1	MC COUPLING NUT	ZINC ALLOY	BLACK E-COAT
8	A/R	CABLE, 14AWG-3 TYPE TC-ER, ST00W	PVC	GRAY
7	4	QC SOCKET CONTACT	COPPER ALLOY	GOLD PLATED
6	1	QC FEMALE INSERT	PVC	BLACK
5	1	QC FEMALE COUPLING NUT	ALUMINUM	CLEAR ANODIZE
4	4	QC PIN CONTACT	COPPER ALLOY	GOLD PLATED
3	1	QC MALE INSERT	PVC	BLACK
2	1	QC MALE COUPLING NUT	ALUMINUM	CLEAR ANODIZE
1	1	OVERMOLD	PVC	GRAY
ITEM	QTY	DESCRIPTION	MATERIAL	FINISH

INITIAL RELEASE EC NO: WNA2010-0439 DRWN: KJOZWIK 2010/01/18 CHKD: BWOODMAN APPR: JFMURPHY 2010/01/20 A		DESCRIPTION REV	QUALITY SYMBOL <div>▽=0</div> <div>▽C=0</div>	GENERAL TOLERANCES (UNLESS SPECIFIED)			DIMENSION STYLE IN/MM		SCALE 1:1	DESIGN UNITS INCH	THIRD ANGLE PROJECTION		
					mm	INCH	DRAWN BY KJOZWIK	DATE 2010/01/18	TITLE BRAD POWER QC 4 POLE TEE W/4 POLE MC CBL DROP				
				4 PLACES	±---	±---	CHECKED BY BWOODMAN	DATE 2010/01/18					
				3 PLACES	±---	±.005	APPROVED BY JFMURPHY	DATE 2010/01/20					
				2 PLACES	±0.13	±.010	MATERIAL NO. SEE TABLE		DOCUMENT NO. SD-130068-016	SHEET NO. 1 OF 1			
				1 PLACE	±0.25	±.020	THIS DRAWING CONTAINS INFORMATION THAT IS PROPRIETARY TO MOLEX INCORPORATED AND SHOULD NOT BE USED WITHOUT WRITTEN PERMISSION						
				ANGULAR ±1/2°									
				DRAFT WHERE APPLICABLE MUST REMAIN WITHIN DIMENSIONS									