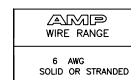
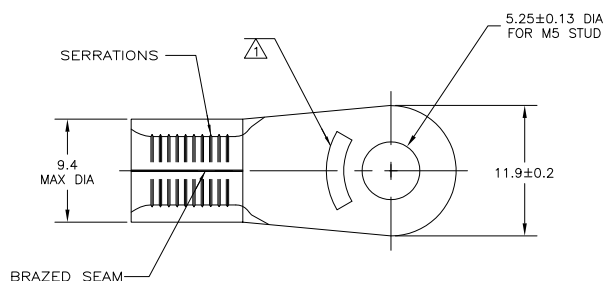
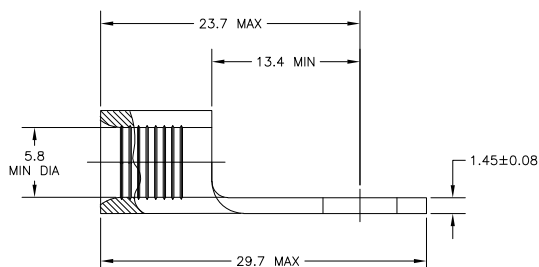


THIS DRAWING IS UNPUBLISHED. RELEASED FOR PUBLICATION
BY TYCO ELECTRONICS CORPORATION. ALL RIGHTS RESERVED.

| LOC | DIST | REVISIONS | | | | | |
|-----|------|-----------|-----|---------------------------|---------|-----|-----|
| G | 14 | P | LTR | DESCRIPTION | DATE | DWN | APV |
| | | | A | REDRAWN PER ECR 05-010490 | 08SEP05 | JR | TM |



- 1 STAMP AMP 6* APPROX AS SHOWN
- 2 COPPER PER ASTM B-152, ANNEALED
- 3 MAX OPERATING TEMP IS 170°C
- 4 WIRE CROSS SECTIONAL AREA RANGE: 10.5-16.8mm² [20,800-33,100] CIR MILS SOLID OR STRANDED WIRE



| | | | |
|--------------|-----|--|----------|
| LOOSE PIECE | 100 | TIN PLATE 0.00254[.000100] MIN THK PER MIL-T-10727 | 130552 |
| PACKAGE TYPE | QTY | FINISH | PART NO. |

| | | | | | |
|--|--|------------------|--|-----------------------------------|--|
| THIS DRAWING IS A CONTROLLED DOCUMENT. | | J.R. RUTH | | Tyco Electronics Corporation | |
| DIMENSIONS: mm INCHES | | T. MICHELUTTI | | Harriburg, Pa 17105-3608 | |
| TOLERANCES UNLESS OTHERWISE SPECIFIED: | | T. MICHELUTTI | | TERMINAL, RING TONGUE, SOLISTRAND | |
| 0 PLG ± . | | APPLICATION SPEC | | SIZE CASE CODE DRAWING NO | |
| 1 PLG ± . | | WEIGHT | | A2 00779 C=130552 | |
| 2 PLG ± . | | FINISH | | RESTRICTED TO | |
| 3 PLG ± . | | CUSTOMER DRAWING | | SCALE 4:1 SHEET 1 OF 1 REV A | |
| 4 PLG ± . | | SEE TABLE | | | |
| ANGLES ± . | | | | | |
| MATERIAL | | | | | |
| FINISH | | | | | |

AMP 1471-9 REV 31MAR2000