

IEC Appliance Inlet C20 with Circuit Breaker TA35 1-pole

V-Lock



C20

70° C



Description

- Panel Mount:
Snap-in version from front side
- 2 Functions:
Appliance Inlet, Protection class I, Circuit breaker type TA35, 1-pole
- Quick connect terminals 6.3 x 0.8 mm

Approvals

- VDE Certificate Number: 40025196
- UL File Number: E96454
- CCC File Number: 2015180204000153

Characteristics

- Unwired
- Switch non-illuminated or illuminated
- Suitable for use in equipment according to IEC/UL 60950

Other versions on request

- Pre-wired version
- Quick connect terminals 4.8 x 0.8 mm
- Protection class II, 70°C

References

Alternative: version for 10 A (15 A)
Substitute for type 1624-K

Weblinks

[pdf-datasheet](#), [html-datasheet](#), [General Product Information](#), [RoHS](#), [CHINA-RoHS](#), [REACH](#), [Distributor-Stock-Check](#), [Accessories](#), [Detailed request for product](#)

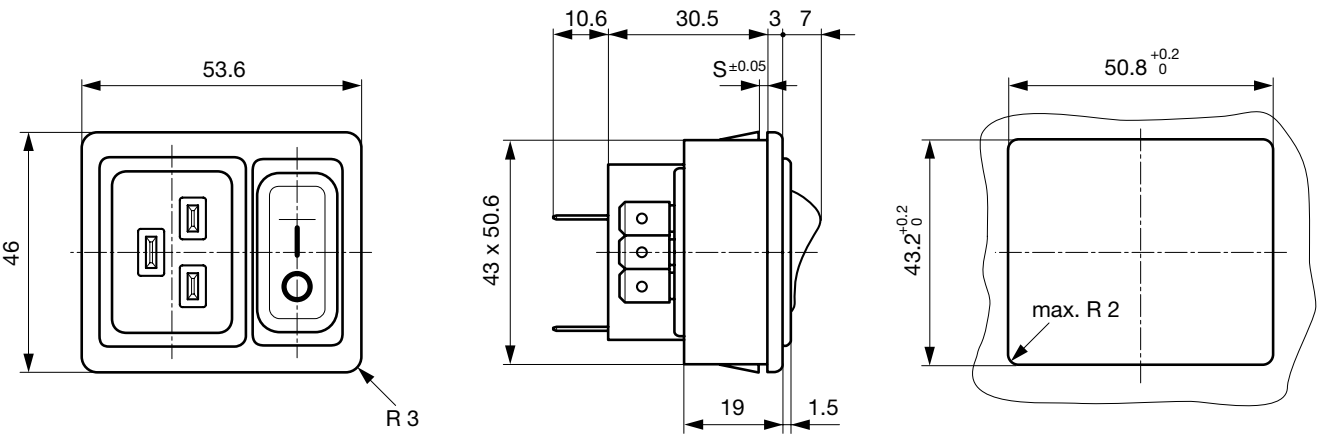
Newly available variants corresponding to V-Lock mating cordset. The connector is equipped with a notch intended for use with the latching cordset. The cord latching system prevents against accidental removal of the cordset.

Technical Data

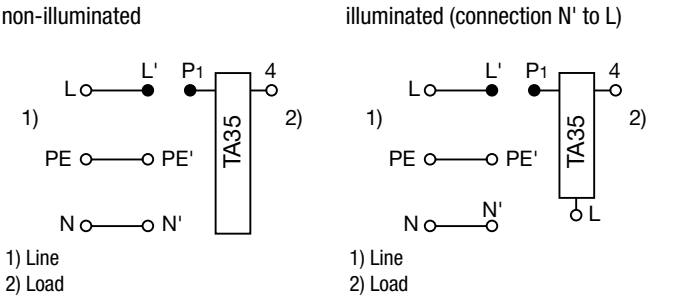
Ratings IEC	16 A / 250VAC; 50Hz
Ratings UL/CSA	20A / 250VAC; 60Hz
Dielectric Strength	> 2.5 kVAC between L-N > 3 kVAC between L/N-PE (1 min/50 Hz)
Allowable Operation Temp.	-25 °C to 60 °C
IP-Protection	from front side IP 40 acc. to IEC 60529
Innsulation cover	Suitable for appliances with protection class I acc. to IEC 61140
Terminal	Quick connect terminals 6.3 x 0.8 mm
Panel Thickness s	Snap-in: 1.5/2/2.5 mm
Material: Housing	Thermoplastic, black, UL 94V-0

appliance inlet/-outlet	C20 acc. to IEC 60320-1, UL 498, CSA C22.2 no. 42 (for cold conditions) pin-temperature 70 °C, 16 A, Protection Class I
Circuit Breakers	Acc. IEC/EN 60934, UL 1077, CSA 22.2 no. 235 1-pole rocker switch, illuminated or non-illuminated. Conditional short circuit Inc: 2000 A

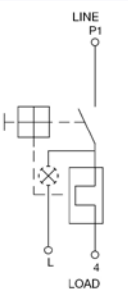
Dimensions



Diagrams



ORDER CODE

Number of switched poles Number of protected poles		1-pole 1	
			
Switch	without illumination	CFT	
Switch	illuminated 240 V 120 V	C2F C4F	

Other versions on request

Table 1 Selection for type TA35

Order example

TA35- **CFT** **W** **F** **120** **C0**
 No other features

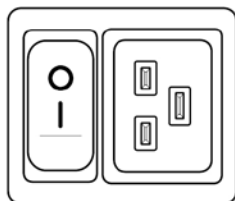
Colours			
	Switch front	Rocker	
		non-illuminated	illuminated
W	black	white	—
B	black	black	—
3	black	—	red transparent
4	black	—	green transparent
6	black	—	orange transparent

Other colours on request

Rocker legend			
	Surface	Illustration	Colour of print
F	embossed	— 0	
H	printed	ON OFF	white
K	printed	ON OFF	black
L	printed	— 0	white
M	printed	— 0	black

Other legends on request

Position of the rocker legend e.g. F



Rated current I_n (A)

I_n	Code	I_n	Code
1,0	J10	8,0	080
2,0	J20	10,0	100
4,0	040	12,0	120
5,0	050	15,0	150
6,0	060	16,0	160
		20,0	200*

Other rated currents on request

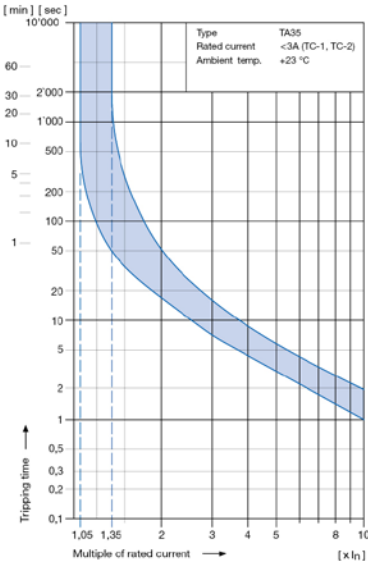
*) UL / CSA only

Technical data (continued)

Circuit breaker

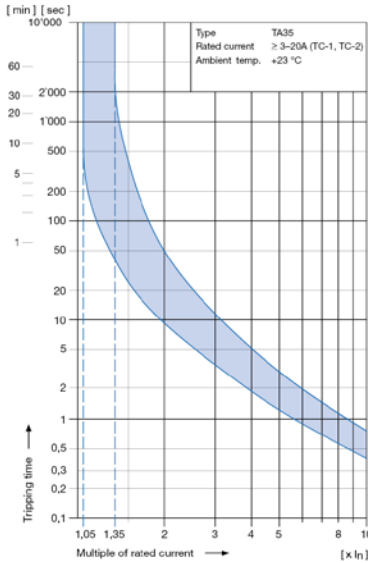
Tripping characteristics

$I_n < 3\text{ A}$



Tripping characteristics

$I_n \geq 3 \dots 20\text{ A}$



Effect of ambient temperature

The unit is calibrated for an ambient temperature of +23 °C. To determine the rated current for lower or higher ambient temperature, use a correction factor from the table below.

* Ambient temperature [°C]	Correction factor
-25	0.79
-20	0.81
0	0.90
+23	1.00
+40	1.03
+50	1.04
+60	1.06

* Temperature must be measured at the rear of the breaker next to the terminals after equipment operating temperature has been reached.

Example:
Rated current at +23 °C 10 A
Ambient temperature +60 °C
Correction factor 1.06
Chosen rated current at +60 °C ambient temperature: **10 A x 1.06 = 10.6 A**

Order code (Order example)

Type	Order code TA35
6136	C F T W F 1 2 0 C 0
	see table 1

. 0 2 1 0 . 2 1

- Specials**
21 V-Lock-Notch
- Wiring**
1 wired
0 unwired
- Terminals**
1 Quick connect 6.3 x 0.8 mm
- Mounting**
2 Snap-in s = 1.5 mm
3 Snap-in s = 2.0 mm
4 Snap-in s = 2.5 mm
0 Protection class 1

Please note that Schurter will establish an internal part number for logistics use in addition to the order code. The format of this internal part number is, for example: 6136.xxxx.xxxx

Packaging unit 15 Pcs

Mating Outlets/Connectors

Category / Description



[Connector Overview complete](#)

IEC Connector C19, Rewireable, Straight	4795
IEC Connector C19, Rewireable, Angled	4790
IEC Connector C19, Rewireable, Straight	0104U

[Connector further types to 6136](#)



[Power Supply Cord Overview complete](#)

Cord Sets 16 A, Europlug, 2.5 m, Connector IEC C19, cord end:	6004.0395
Cord Sets 16 A, Interconnection, 2.0 m, Connector IEC C19, cord end:	6020.0394
Cord Sets 16 A, North America, 2.5 m, Connector IEC C19, cord end:	6009.5195

[Power Supply Cord further types to 6136](#)

Mating Outlets/Connectors shuttered



[Power Cord Overview complete](#)

Overview Power Cord with IEC Appliance Connector C19, V-Lock, straight	VAC19KS
--	---------

[Power Cord further types to 6136](#)