

# MICRO SWITCH

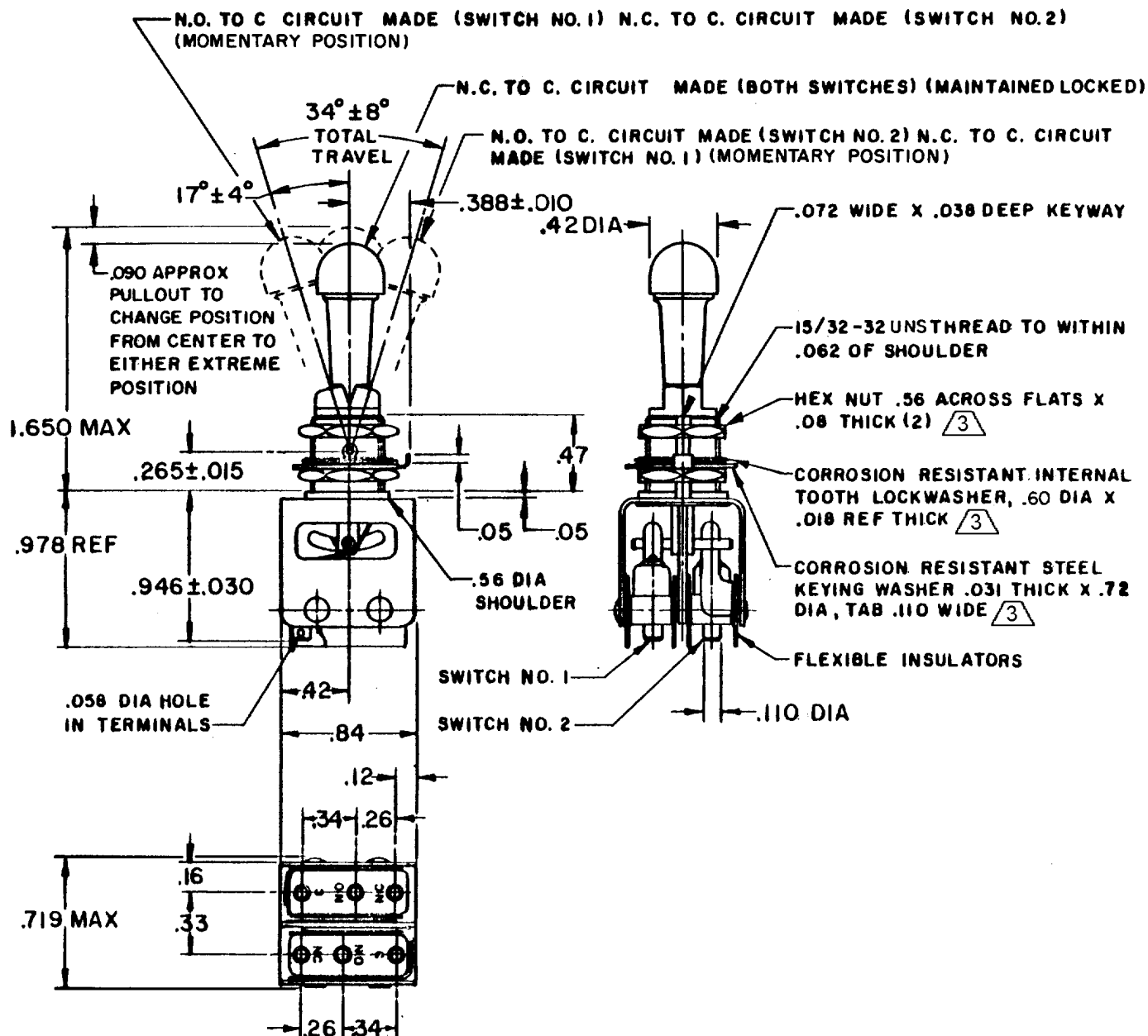
FREEPORT ILLINOIS, U.S.A  
A DIVISION OF HONEYWELL

FED. MFG. CODE 91929

## ASSEMBLY- TOGGLE - SWITCH

CATALOG LISTING

13AT1-E



### NOTE

1-UNIT INCLUDES CAT. LIST. ISMI TYPE BASIC SWITCH (2)

2-TERMINALS ARE PLATED FOR SOLDERING

③ HARDWARE FURNISHED ASSEMBLED WITH SWITCH OR IN PACKET PER MIL-PRF-8805

4- REPLACEMENT MOUNTING HARDWARE PACKET 15PA312-AT

THIS DRAWING COVERS A PROPRIETARY ITEM AND IS THE PROPERTY OF MICRO SWITCH, A DIVISION OF HONEYWELL. THIS DRAWING IS NOT TO BE COPIED OR USED WITHOUT THE APPROVAL OF MICRO SWITCH.

### CHARACTERISTICS

### ELECTRICAL DATA

### SCALE FULL

#### CONTACT ARRANGEMENT S P D T (2)

250 VAC — — — — — 5 AMP

30 VOLTS DC RATING

INDUCTIVE — — — SEA LEVEL — — — 3 AMP

50,000 FT — — — 2.5 AMP

RESISTIVE — — — SEA LEVEL — — — 5 AMP

50,000 FT — — — 5 AMP

MAXIMUM INRUSH — — — — — 24 AMP

#### DO NOT SCALE PRINT

UNLESS OTHERWISE NOTED  
DIMENSIONS ARE IN INCHES

**TOLERANCES ARE:**  
ONE PLACE (.0) ±.030  
TWO PLACE (.00) ±.015  
THREE PLACE (.000) ±.005  
ANGLES ±

WEIGHT .06

13AT1-E

PAGE 1 OF 1

M

DRAWING  
NUMBER

8

ISSUE

REPLACES

RELEASE NO. SR 12884

CHECK

### REVISIONS

A SR12884

RER JUN 67

B CO28982

R C R MAY 71

C CO 50566-B

WJM MAY 82

D CO 52725

S L B JUN 83

E CO66089

DAW FEB 91

F CO-92636

G J W 16 DEC 98

G 206956

TSM 26 NOV 02

CHECK

13 JUN 98

13 JUN 98

CHECK

13 JUN 98

13 JUN 98

RASTER

FO-50378-1A

DRAWN